



Informatica® Multidomain MDM
10.4 HotFix 1

Installation Guide for Oracle Database with Red Hat JBoss

Informatica Multidomain MDM Installation Guide for Oracle Database with Red Hat JBoss
10.4 HotFix 1
September 2020

© Copyright Informatica LLC 2001, 2020

This software and documentation are provided only under a separate license agreement containing restrictions on use and disclosure. No part of this document may be reproduced or transmitted in any form, by any means (electronic, photocopying, recording or otherwise) without prior consent of Informatica LLC.

U.S. GOVERNMENT RIGHTS Programs, software, databases, and related documentation and technical data delivered to U.S. Government customers are "commercial computer software" or "commercial technical data" pursuant to the applicable Federal Acquisition Regulation and agency-specific supplemental regulations. As such, the use, duplication, disclosure, modification, and adaptation is subject to the restrictions and license terms set forth in the applicable Government contract, and, to the extent applicable by the terms of the Government contract, the additional rights set forth in FAR 52.227-19, Commercial Computer Software License.

Informatica, the Informatica logo, and ActiveVOS are trademarks or registered trademarks of Informatica LLC in the United States and many jurisdictions throughout the world. A current list of Informatica trademarks is available on the web at <https://www.informatica.com/trademarks.html>. Other company and product names may be trade names or trademarks of their respective owners.

Portions of this software and/or documentation are subject to copyright held by third parties. Required third party notices are included with the product.

The information in this documentation is subject to change without notice. If you find any problems in this documentation, report them to us at infa_documentation@informatica.com.

Informatica products are warranted according to the terms and conditions of the agreements under which they are provided. INFORMATICA PROVIDES THE INFORMATION IN THIS DOCUMENT "AS IS" WITHOUT WARRANTY OF ANY KIND, EXPRESS OR IMPLIED, INCLUDING WITHOUT ANY WARRANTIES OF MERCHANTABILITY, FITNESS FOR A PARTICULAR PURPOSE AND ANY WARRANTY OR CONDITION OF NON-INFRINGEMENT.

Publication Date: 2020-11-11

Table of Contents

Preface	7
Informatica Resources.	7
Informatica Network.	7
Informatica Knowledge Base.	7
Informatica Documentation.	7
Informatica Product Availability Matrices.	8
Informatica Velocity.	8
Informatica Marketplace.	8
Informatica Global Customer Support.	8
Chapter 1: Installation Overview	9
Multidomain MDM Installation.	9
Installation Topology.	11
Installation Tasks.	11
Chapter 2: Pre-Installation Tasks	12
Prepare for Installation.	12
Prepare the Environment.	13
Set Up the Database Environment.	14
Step 1. Install and Configure Oracle.	15
Step 2. Create a Database and Tablespaces.	15
Step 3. Set Up Database Privileges and Connections.	18
Step 4. Create the ActiveVOS Schema.	18
Set Up the Application Server Environment.	20
Configure Java Virtual Machines.	20
Configure Server Properties for the Full Profile.	23
Configure Transport Layer Security (TLS).	25
Secure HTTP Response Headers.	25
Create the ActiveVOS Console Administrative User.	25
Start JBoss.	26
Configure the Properties Files for Silent Installation.	27
Configuring the Hub Server Properties File.	27
Configuring the Process Server Properties File.	28
Chapter 3: Hub Store Installation	29
Create the MDM Hub Master Database.	29
Create an Operational Reference Store.	31
Import the Metadata into the MDM Hub Master Database.	32
Import the Metadata into the Operational Reference Store.	34

Chapter 4: Hub Store Post-Installation Tasks.....	36
Verify Access to Oracle Components.	36
Chapter 5: Hub Server Installation.....	38
Installing the Hub Server.	38
Review the Installer Workflow.	39
Collect the Installation Values.	40
Install the Hub Server from the Installation Wizard.	45
Install the Hub Server from the Command Line (UNIX Only).	46
Install the Hub Server Silently.	46
Install the Hub Server on Nodes in the Cluster.	47
Chapter 6: Hub Server Post-Installation Tasks.....	48
Copy the Installation Log Files.	49
Verify the Version and Build Number.	49
Install and Configure Elasticsearch.	50
Configure the Hub Console Client (Conditional).	50
Configure the MDM Hub Master Database Name.	50
Verify and Configure Application Server Settings (Conditional).	51
Editing the Application Server Settings.	51
Configuring the Hub Server for a JBoss Multi-node or Cluster Environment.	51
Deploy the Hub Server Applications (Conditional).	52
Use a Script to Deploy the Hub Server Applications (Conditional).	53
Manually Deploy the Hub Server Applications (Conditional).	54
Step 1. Creating Data Sources.	54
Step 2. Configuring JMS Message Queues.	56
Step 3. Deploying the Hub Server Applications.	59
Step 4. Configuring JMS Message Queues on the Hub Server.	59
Step 5. Configuring Server Resources for Informatica Data Director.	61
Configure Metadata Caching (Optional).	61
Editing Infinispan Attributes.	62
Start the Hub Console.	63
Register an Operational Reference Store.	64
Registering Oracle Configuration Manager (Optional).	66
Setting Up Oracle Configuration Manager for ActiveVOS (Optional).	66
Additional Application Server Configuration (Optional).	68
Configuring JBoss for Standalone Process Server Instances.	68
Configuring EJB Security.	68
Chapter 7: Process Server Installation.....	71
Installing the Process Server.	71
Review the Installer Workflow.	72

Collect the Installation Values.	73
Install the Process Server from the Installation Wizard.	75
Install the Process Server from the Command Line (UNIX Only).	76
Install the Process Server Silently.	77
Install the Process Server on Nodes in the Cluster.	77
Chapter 8: Process Server Post-Installation Tasks.	79
Copy the Installation Log Files.	79
Verify the Version and Build Number.	80
Deploy the Process Server Application (Conditional).	80
Step 1. Creating Data Sources (Conditional).	81
Step 2. Deploying the Process Server Application (Conditional).	81
Enabling Secured Communications for Process Servers.	82
Install and Configure Elasticsearch.	83
Configure Match Population.	83
Enabling Match Population.	84
Configuring the Process Server with Cleanse Engines.	85
Chapter 9: ActiveVOS Post-Installation Tasks for the Application Server.	86
Edit the ActiveVOS Security Domain in JBoss.	86
Create a Trusted User in JBoss Environments.	86
Chapter 10: ActiveVOS Post-Installation Tasks for the Business Entity Adapter.	88
ActiveVOS Web Applications.	88
Configuring the ActiveVOS URNs for the Business Entity Workflow Adapter.	89
Set the ActiveVOS Protocol to HTTPS.	89
Configure the Primary Workflow Engine.	90
Configure the MDM Identity Services for ActiveVOS.	90
Configure Tasks.	91
Chapter 11: Customize ActiveVOS.	92
Adding ActiveVOS Properties.	92
Chapter 12: Resource Kit Installation.	93
Setting Up the MDM Hub Sample Operational Reference Store.	93
Registering the Informatica MDM Hub Sample Operational Reference Store.	96
Installing the Resource Kit in Graphical Mode.	98
Installing the Resource Kit in Console Mode.	100
Installing the Resource Kit in Silent Mode.	102
Configuring the Properties File.	103
Running the Silent Installer.	105

Chapter 13: Troubleshooting the MDM Hub.....	106
Troubleshooting the Installation Process.	106
Chapter 14: Uninstallation.....	110
Uninstallation Overview.	110
Uninstalling the Hub Store.	110
Uninstalling the Process Server in Graphical Mode.	111
Uninstalling the Process Server in Graphical Mode On UNIX.	111
Uninstalling the Process Server in Graphical Mode On Windows.	111
Uninstalling the Hub Server in Graphical Mode.	112
Uninstalling the Hub Server in Graphical Mode on UNIX.	112
Uninstalling the Hub Server in Graphical Mode on Windows.	112
Uninstalling the Resource Kit in Graphical Mode.	112
Uninstalling the Resource Kit in Graphical Mode on UNIX.	112
Uninstalling the Resource Kit in Graphical Mode on Windows.	113
Uninstalling the Process Server in Console Mode.	113
Uninstalling the Hub Server in Console Mode.	113
Uninstalling the Resource Kit in Console Mode.	114
Manually Undeploying the Process Server.	114
Manually Undeploying the Hub Server.	114
Index.....	116

Preface

Follow the instructions in the Informatica® *Multidomain MDM Installation Guide* to install and set up Multidomain MDM in the supported database and application server environment of your choice. In addition to the installation tasks, the guide includes pre-installation and post-installation tasks.

Informatica Resources

Informatica provides you with a range of product resources through the Informatica Network and other online portals. Use the resources to get the most from your Informatica products and solutions and to learn from other Informatica users and subject matter experts.

Informatica Network

The Informatica Network is the gateway to many resources, including the Informatica Knowledge Base and Informatica Global Customer Support. To enter the Informatica Network, visit <https://network.informatica.com>.

As an Informatica Network member, you have the following options:

- Search the Knowledge Base for product resources.
- View product availability information.
- Create and review your support cases.
- Find your local Informatica User Group Network and collaborate with your peers.

Informatica Knowledge Base

Use the Informatica Knowledge Base to find product resources such as how-to articles, best practices, video tutorials, and answers to frequently asked questions.

To search the Knowledge Base, visit <https://search.informatica.com>. If you have questions, comments, or ideas about the Knowledge Base, contact the Informatica Knowledge Base team at KB_Feedback@informatica.com.

Informatica Documentation

Use the Informatica Documentation Portal to explore an extensive library of documentation for current and recent product releases. To explore the Documentation Portal, visit <https://docs.informatica.com>.

If you have questions, comments, or ideas about the product documentation, contact the Informatica Documentation team at infa_documentation@informatica.com.

Informatica Product Availability Matrices

Product Availability Matrices (PAMs) indicate the versions of the operating systems, databases, and types of data sources and targets that a product release supports. You can browse the Informatica PAMs at <https://network.informatica.com/community/informatica-network/product-availability-matrices>.

Informatica Velocity

Informatica Velocity is a collection of tips and best practices developed by Informatica Professional Services and based on real-world experiences from hundreds of data management projects. Informatica Velocity represents the collective knowledge of Informatica consultants who work with organizations around the world to plan, develop, deploy, and maintain successful data management solutions.

You can find Informatica Velocity resources at <http://velocity.informatica.com>. If you have questions, comments, or ideas about Informatica Velocity, contact Informatica Professional Services at ips@informatica.com.

Informatica Marketplace

The Informatica Marketplace is a forum where you can find solutions that extend and enhance your Informatica implementations. Leverage any of the hundreds of solutions from Informatica developers and partners on the Marketplace to improve your productivity and speed up time to implementation on your projects. You can find the Informatica Marketplace at <https://marketplace.informatica.com>.

Informatica Global Customer Support

You can contact a Global Support Center by telephone or through the Informatica Network.

To find your local Informatica Global Customer Support telephone number, visit the Informatica website at the following link:

<https://www.informatica.com/services-and-training/customer-success-services/contact-us.html>.

To find online support resources on the Informatica Network, visit <https://network.informatica.com> and select the eSupport option.

CHAPTER 1

Installation Overview

This chapter includes the following topics:

- [Multidomain MDM Installation, 9](#)
- [Installation Topology, 11](#)
- [Installation Tasks, 11](#)

Multidomain MDM Installation

Multidomain MDM is a master data management solution that enhances data reliability and data maintenance procedures. Multidomain MDM is also referred to as the MDM Hub. You can access the MDM Hub features through the Hub Console.

The MDM Hub consists of multiple components. You can install the MDM Hub in the graphical mode, the console mode, or the silent mode.

Core Components

The following table describes the core installation components:

Component	Description
MDM Hub Master Database	A schema that stores and consolidates business data for the MDM Hub. Contains the MDM Hub environment configuration settings, such as user accounts, security configuration, Operational Reference Store registry, and message queue settings. You can access and manage an Operational Reference Store from an MDM Hub Master Database. The default name of an MDM Hub Master Database is CMX_SYSTEM, but you can use a custom name. You can create multiple MDM Hub Master Databases, each with its own set of Operational Reference Stores, in the same database instance.
Operational Reference Store	A schema that stores and consolidates business data for the MDM Hub. Contains the master data, content metadata, and the rules to process and manage the master data. You can configure separate Operational Reference Store databases for different geographies, different organizational departments, and for the development and production environments. You can distribute Operational Reference Store databases across multiple server machines. The default name of an Operational Reference Store is CMX_ORS.
Hub Server	A J2EE application that you deploy on an application server. The Hub Server processes data stored within the MDM Hub and integrates the MDM Hub with external applications. The Hub Server manages core and common services for the MDM Hub.

Component	Description
Process Server	A J2EE application that you deploy on an application server. The Process Server processes batch jobs such as load, recalculate BVT, and revalidate, and performs data cleansing and match operations. The Process Server interfaces with the cleanse engine that you configure to standardize and optimize data for match and consolidation.
Provisioning tool	A tool to build business entity models, and to configure the Entity 360 framework for Data Director. After you build business entity models, you can publish the configuration to the MDM Hub.
Informatica ActiveVOS [®]	<p>A business process management (BPM) tool that is required internally by the MDM Hub for processing data. Informatica ActiveVOS supports automated business processes, including change-approval processes for data. You can also use Informatica ActiveVOS to ensure that changes to master data undergo a review-and-approval process before inclusion in the best version of the truth (BVT) records.</p> <p>When you install ActiveVOS Server as part of the Hub Server installation, you install the ActiveVOS Server, ActiveVOS Console, and Process Central. Also, you install predefined MDM workflows, tasks, and roles.</p>
Data Director (IDD)	A user interface to master and manage the data that is stored in the MDM Hub. In IDD, data is organized by business entities, such as customers, suppliers, and employees. Business entities are data groups that have significance for organizations.

Optional Components

The following table describes the optional installation components:

Component	Description
Resource Kit	Set of samples, applications, and utilities to integrate the MDM Hub into your applications and workflows. You can select the Resource Kit components that you want to install.
Dynamic Data Masking	A data security tool that operates between the MDM Hub and databases to prevent unauthorized access to sensitive information. Dynamic Data Masking intercepts requests sent to databases and applies data masking rules to the request to mask the data before it is sent back to the MDM Hub.
Informatica Data Controls (IDC)	Applicable to Informatica Data Director (IDD) based on the subject area data model only. IDC is a set of user interface controls that expose the MDM Hub data in third-party applications that are used by business users.
Zero Downtime (ZDT) module	<p>A module to ensure that applications have access to data in the MDM Hub during the MDM Hub upgrade. In a ZDT environment, you duplicate the databases: source databases and target databases. During the MDM Hub upgrade, the ZDT module replicates the data changes in the source databases to the target databases.</p> <p>To buy the ZDT module, contact your Informatica sales representative. For information about installing a zero downtime environment, see the <i>Multidomain MDM Zero Downtime Installation Guide</i> for the database.</p>

Installation Topology

Before you install the MDM Hub, decide on the installation topology. Usually, infrastructure planners and Master Data Management solution architects determine on the topology to implement.

You can install the MDM Hub in multiple environments, such as development, test, and production. The requirements and priorities for each type of environment are unique. Therefore, the installation topology differs for each environment.

The following table describes the MDM Hub installation topologies that you can use:

Topology	Description
Standalone application server instance	All the MDM Hub components are installed on a standalone application server instance.
Multiple application server instances	The MDM Hub components are installed on multiple application server instances.
Application server cluster	The MDM Hub components are installed in an application server cluster.

For more information about installation topologies, see the *Multidomain MDM Infrastructure Planning Guide*.

Note: All the components of the MDM Hub implementation must have the same version. If you have multiple versions of the MDM Hub, install each version in a separate environment.

Installation Tasks

Complete the preinstallation tasks before you install the MDM Hub components. After the installation, complete the post-installation tasks.

To install the MDM Hub, perform the following tasks:

1. Complete the preinstallation tasks. To ensure that you can successfully run the installers for the Hub Server and the Process Server and create the Hub Store, complete the pre-installation tasks.
2. Create the MDM Hub Master Database. Create the MDM Hub Master Database before you install the Hub Server and the Process Server.
Use the setup script provided with the MDM Hub distribution to create the MDM Hub Master Database.
3. Create the Operational Reference Store. Create Operational Reference Stores at any time after you complete the preinstallation tasks.
Use the setup script provided with the MDM Hub distribution to create the Operational Reference Store.
4. Install the Hub Server. Use the MDM Hub installer to install the Hub Server.
5. Install the Process Server. Use the MDM Hub installer to install the Process Server.
6. Perform the post-installation configuration tasks. Test the database connections. To ensure that you can use the MDM Hub features, configure the Hub Server and the Process Server.
7. Optionally, install the Resource Kit. Use the MDM Hub installer to install the Resource Kit.

CHAPTER 2

Pre-Installation Tasks

This chapter includes the following topics:

- [Prepare for Installation, 12](#)
- [Prepare the Environment, 13](#)
- [Set Up the Database Environment, 14](#)
- [Set Up the Application Server Environment, 20](#)
- [Configure the Properties Files for Silent Installation, 27](#)

Prepare for Installation

Before you install the MDM Hub, prepare for the installation.

The following table describes the preparatory tasks for the installation:

Task	Description
Read the Release Notes	Read the latest <i>Multidomain MDM Release Notes</i> for updates to the installation and upgrade process. Important: Some versions of application servers and databases have known limitations when running Multidomain MDM. Ensure that you perform all suggested workarounds.
Read the Product Availability Matrix	Read the Product Availability Matrix (PAM) for information about product requirements and supported platforms. You can access PAMs at https://network.informatica.com/community/informatica-network/product-availability-matrices .
Understand the MDM infrastructure and architecture plan	Acquire and understand the plan for the MDM infrastructure and architecture from the infrastructure planners or the MDM solution architects in your organization. For more information about infrastructure planning and MDM architecture, see the <i>Multidomain MDM Infrastructure Planning Guide</i> .
Download and extract the installer files	Download the installation files from the Informatica Electronic Software Download site to a directory on your machine. To extract the compressed files, use an extraction utility that also extracts empty folders. Download and extract the following installation files: <ul style="list-style-type: none">- MDM Hub installer for the operating system- Database files- ActiveVOS Server installer for the operating system

Task	Description
Verify license key	Verify that you have the license key, which is in an email message from Informatica. Copy the license key file to a directory accessible to the user account that installs the product. If you do not have a license key, contact Informatica Global Customer Support.
Create an installation documentation directory	Create a directory to store copies of installation files, such as the validation results, environment reports, database debug logs, and log files. For example, create the directory install_doc. To troubleshoot the installation, you can create an archive file of the installation documentation directory and send it to Informatica Global Customer Support for analysis.

Prepare the Environment

Before you install the MDM Hub, prepare the installation environment.

The following table describes the tasks you perform to prepare the environment for the installation:

Task	Description
Verify minimum system requirements	Verify that the machines meet the hardware and software requirements for the MDM Hub installation. The hardware requirements are dependent on the data, processing volumes, and business rules. To install the MDM Hub, the machines must meet the following minimum requirements: <ul style="list-style-type: none"> - Disk space. 4.9 GB - RAM for the development environment. 4 GB To verify the run-time physical memory requirements of the MDM Hub components, use the following formula: Total run-time memory requirement for MDM Hub components = JDK JVM max heap size of the application server + operating system native heap size
Install Java Development Kit (JDK)	Install a supported version of the JDK on the machine on which you want to install the MDM Hub. The JDK is not bundled with the MDM Hub installers. In a JBoss environment, you must install the version of Azul Zulu JDK that Informatica provides. Contact Informatica Shipping to download Azul Zulu JDK. Note: Use the same Java version on the application server machines and on the machines on which you want to launch the Hub Console.
Install Visual C++ Redistributable for Visual Studio 2015 on Windows only	On Windows systems, Multidomain MDM requires Visual C++ Redistributable for Visual Studio 2015 to support the name search feature and the matching feature.

Task	Description
Set environment variables	<p>Set the environment variables for the MDM Hub installation.</p> <p>To use the correct JDK, set the following environment variables to point to the JDK directory:</p> <ul style="list-style-type: none"> - JAVA_HOME. Required - PATH. Required <p>To set the correct locale behavior for Oracle, set the NLS_LANG environment variable for client application environments such as the Oracle loader, and the MDM Hub components.</p> <p>Specify the NLS_LANG parameter in the following format:</p> <pre>NLS_LANG = <language>_<territory>.<character set></pre> <p>Note: To store and search for records that contain Chinese, Japanese, Korean, or accented characters, set the character set to UTF-8.</p> <p>For more information about NLS_LANG settings, see the Oracle documentation.</p>
Set the operating system locale	Set the same operating system locale for the Hub Server, the MDM Hub Master Database, Operational Reference Store, and the Hub Console.
Set up the X Window System on UNIX	If you want to run the installer in graphical mode on UNIX, set up an X Window System. An X Window System is a graphics display server. For more information about setting up an X Window System, see the documentation for your operating system.
Disable access to the root welcome page for your application server	To improve security, disable access to the root welcome page for your application server. For instructions, see the documentation for your application server.
Disable insecure TLS cipher suites	<p>To improve security, in the Java runtime environment that is used with Multidomain MDM, disable insecure TLS cipher suites.</p> <ol style="list-style-type: none"> 1. Open the following file: <code>../jdk<version>/jre/lib/security/java.security</code> 2. Find the property <code>jdk.tls.disabledAlgorithms</code> and update the value to include the following list of insecure cipher suites: <pre>jdk.tls.disabledAlgorithms = SSLv3, RC4, MD5withRSA, DH keySize < 1024, EC keySize < 224, DES40_CBC, RC4_40, 3DES_EDE_CBC, EDH-RSA-DES-CBC3-SHA, ECDHE-RSA-DES-CBC3-SHA, DES-CBC3-SHA</pre> <p>For more information about the property, see the documentation for your JDK.</p>

For more information about product requirements and supported platforms, see the Product Availability Matrix on Informatica Network:

<https://network.informatica.com/community/informatica-network/product-availability-matrices>

Set Up the Database Environment

Before you create an MDM Hub Master Database and Operational Reference Store, set up the database environment.

To set up the database environment, perform the following tasks:

1. Install and configure Oracle.
2. Set up a database instance.
3. Set up database privileges and connections.
4. Create the ActiveVOS[®] schema.

Step 1. Install and Configure Oracle

You can install and configure Oracle Database according to the instructions in the Oracle documentation.

The following table describes the Oracle installation and configuration tasks that you must perform on each machine on which you want an Oracle instance :

Tasks	Description
Install Oracle	Install the supported version of Oracle Database. Note: If you want to use the Oracle multitenant feature, set up a pluggable database (PDB) for the MDM Hub installation.
Install clients and utilities	Install the Oracle client and utilities software to communicate with the MDM Hub, and to run the MDM Hub processes. On each machine where you want to run the Hub Server or Process Server, install the following software: <ul style="list-style-type: none">- Oracle client- SQL*Loader
Disable recycle bins	Disable the recycle bins, USER_RECYCLEBIN and DBA_RECYCLEBIN. Recycle bins can interfere with the MDM Hub processes. Disable the recycle bins at the system or session level. Also, purge existing objects in the recycle bin.
Set initialization parameters	Configure the Oracle initialization parameters in the <code>init.ora</code> file. For information about Oracle initialization parameters, see the <i>MDM Multidomain Edition Performance Tuning Guide</i> .

For information about installing and configuring Oracle, see the Oracle documentation.

Step 2. Create a Database and Tablespaces

After you install and configure Oracle Database, create and configure databases and tablespaces.

The following table describes the tasks that you need to perform to configure databases:

Tasks	Description
Create a database	Create a database for each database instance.
Create tablespaces	Create tablespaces for the MDM Hub data. Adjust the default tablespace sizes and the number of data files based on the volume of data that you want to load into the MDM Hub. Create the following tablespaces: <ul style="list-style-type: none">- CMX_DATA. Contains the metadata and user data of the MDM Hub.- CMX_INDX. Contains indexes that the MDM Hub creates and uses.- CMX_TEMP. Contains temporary tables for the MDM Hub.- BPM_DATA. Contains the ActiveVOS data for business process management. Note: If you want to create multiple MDM Hub Master Databases, create unique tablespaces for each MDM Hub Master Database.

Creating Tablespaces on Premises

If you use Oracle on premises, create tablespaces as permanent tablespaces that you manage locally or configure manually.

Note: Create bigfile tablespaces to simplify database management for large data loads. However, you can create smallfile tablespaces if required.

1. Log in to Oracle as a database administrative user such as SYSTEM.
2. Create the tablespaces.

The following table contains sample SQL statements to create tablespaces:

Tablespace Name	Sample SQL Statement
CMX_DATA	<p>Note: Do not change the default tablespace name to prevent Repository Manager validation errors.</p> <pre>CREATE BIGFILE TABLESPACE CMX_DATA NOLOGGING DATAFILE '<Oracle install directory>/CMX_DATA1.dbf' SIZE 2048M REUSE EXTENT MANAGEMENT LOCAL;</pre>
CMX_INDX	<pre>CREATE BIGFILE TABLESPACE CMX_INDX NOLOGGING DATAFILE '<Oracle install directory>/CMX_INDX1.dbf' SIZE 2048M REUSE EXTENT MANAGEMENT LOCAL;</pre>
CMX_TEMP	<pre>CREATE BIGFILE TABLESPACE CMX_TEMP NOLOGGING DATAFILE '<Oracle install directory>/CMX_TEMP1.dbf' SIZE 2048M REUSE EXTENT MANAGEMENT LOCAL;</pre>
BPM_DATA	<pre>CREATE BIGFILE TABLESPACE BPM_DATA NOLOGGING DATAFILE '<Oracle install directory>/BPM_DATA1.dbf' SIZE 2048M REUSE EXTENT MANAGEMENT LOCAL;</pre>

Creating Tablespaces in Amazon Relational Database Service

If you use Amazon Relational Database Service (RDS) for Oracle, create tablespaces as permanent tablespaces in Amazon RDS.

Note: Create bigfile tablespaces to simplify database management for large data loads. However, you can create smallfile tablespaces if required.

1. Log in to Amazon RDS for Oracle as a database administrative user.
2. Create the tablespaces.

The following table contains sample SQL statements to create tablespaces:

Default Tablespace Name	Sample SQL Statement
CMX_DATA	<pre>CREATE BIGFILE TABLESPACE CMX_DATA DATAFILE SIZE 2048M AUTOEXTEND ON NEXT 2048M;</pre> <p>Do not change the default tablespace name to prevent Repository Manager validation errors.</p>
CMX_INDX	<pre>CREATE BIGFILE TABLESPACE CMX_INDX DATAFILE SIZE 2048M AUTOEXTEND ON NEXT 2048M;</pre>
CMX_TEMP	<pre>CREATE BIGFILE TABLESPACE CMX_TEMP DATAFILE SIZE 2048M AUTOEXTEND ON NEXT 2048M;</pre>

Configuring the Database Environment for Custom Tablespace Names

If you use a tablespace name other than the default tablespace name for `CMX_INDX` or `CMX_TEMP`, disable the `DEFERRED_SEGMENT_CREATION` initialization parameter. You disable the parameter to prevent Repository Manager validation errors.

- ▶ To disable `DEFERRED_SEGMENT_CREATION`, run the following SQL statement, and restart the database:

```
ALTER SYSTEM SET DEFERRED_SEGMENT_CREATION=FALSE SCOPE=BOTH;
```

Step 3. Set Up Database Privileges and Connections

Set up database privileges and connections.

The following table describes the tasks that you need to perform to set up database privileges and connections:

Tasks	Description
Grant privileges to the database administrative user	<p>If you want to use a database administrative user to create the MDM Hub Master Database and the Operational Reference Store, grant privileges to the database administrative user. The user must have the privileges to grant options for distributed transactions and DBMS_LOCK.</p> <p>To grant privileges to the database administrative user, connect to the database as a user with privileges to grant options, and run the following SQL statements:</p> <pre>GRANT SELECT ON sys.pending_trans\$ TO <DBA user> with grant option; GRANT SELECT ON sys.dba_pending_transactions TO <DBA user> with grant option; GRANT SELECT ON sys.dba_2pc_pending TO <DBA user> with grant option; GRANT EXECUTE ON sys.dbms_xa TO <DBA user> with grant option; GRANT EXECUTE ON sys.dbms_lock TO <DBA user> with grant option;</pre>
Add the Oracle TNS name	<p>For connections to the Oracle database, add TNS name entries to the <code>tnsnames.ora</code> file on the Hub Server and Process Server machines.</p> <p>To add TNS name entries, use the following syntax:</p> <pre><TNS NAME> = (DESCRIPTION = (ADDRESS_LIST = (ADDRESS = (PROTOCOL = TCP) (Host = <Oracle server host name>) (Port = <Oracle server port>))) (CONNECT_DATA = (SERVICE_NAME = <Oracle SID>)))</pre> <p>Note: The TNS names on the Hub Server and Process Server machines must be the same.</p>
Test the database connection	<p>Test the connection to the database from each machine on which you want to run the Hub Server or the Process Server.</p> <p>In SQL*Plus, use the following SQL statement syntax:</p> <pre>sqlplus <user name>/<password>@<TNS Name></pre>

Step 4. Create the ActiveVOS Schema

To install ActiveVOS, you need to create the ActiveVOS schema. To create the schema, run the `create_bpm` script.

If you want to create multiple MDM Hub Master Databases, create an ActiveVOS schema for each MDM Hub Master Database.

Note: If you want to use the Oracle multitenant feature, create the ActiveVOS schema in a pluggable database (PDB).

1. Open a command prompt and change to the following directory:

```
<MDM Hub distribution directory>/database/bin
```

2. Run the following command:

```
On UNIX. ./sip_ant.sh create_bpm
```

On Windows. sip_ant.bat create_bpm

3. Answer the prompts that appear.

The prompt displays default text in brackets. Press **Enter** to use the default value and go to the next prompt.

Property	Description
Database Type	The type of database. For an Oracle database, specify <code>Oracle</code> . The database type must be the same as the database type selected for the MDM Hub Master Database and the Operational Reference Stores.
Oracle Connection Type	Connection type. Use one of the following values: - <code>SERVICE</code> . Uses the service name to connect to Oracle. - <code>SID</code> . Uses the Oracle System ID to connect to Oracle.
ActiveVOS Database Host Name	Name of the machine that hosts the database.
ActiveVOS Database Port	Port number that the database listener uses.
Database Service Name	Name of the Oracle service. This property is required when the selected Oracle connection type is <code>SERVICE</code> .
Oracle Net Connect Identifier (TNS Name)	Oracle TNS name.
Database SID	Name of the Oracle System ID. This property is required when the selected Oracle connection type is <code>SID</code> .
DBA User Name	User name of the database administrative user.
DBA Password	Password of the administrative user.
ActiveVOS User Name	User name of the ActiveVOS Server administrative user.
ActiveVOS User Password	Password of the administrative user.
ActiveVOS User Tablespace	The name of the tablespace that contains the records that are involved in MDM workflows.
ActiveVOS User Temp Tablespace	The name of the temporary tablespace.

4. After you create the schema, review the `sip_ant.log` file in the following directory:

<MDM Hub distribution directory>/database/bin

The `sip_ant.log` file logs any errors that might occur when you run the `sip_ant` script to create the ActiveVOS database schema.

Set Up the Application Server Environment

You can install the MDM Hub in a JBoss cluster environment or on standalone JBoss instances. Install and configure JBoss according to the instructions in the JBoss documentation. Whether you install the MDM Hub in a JBoss cluster environment or on standalone JBoss instances, install the JBoss standalone configuration, and use the full profile of the configuration.

A JBoss cluster consists of one or more cluster nodes on one or more machines. Install and configure JBoss on all machines on which you want cluster nodes. In a cluster environment, ensure that the directory structure of the JBoss installations is the same on all the cluster nodes.

Note: Install the application server in the same time zone as the database server.

Configure Java Virtual Machines

To configure a Java Virtual Machine (JVM), set Java options by using the `JAVA_OPTS` environment variable.

You can set the Java options in the following file:

On UNIX. `<JBoss installation directory>/bin/standalone.conf`

On Windows. `<JBoss installation directory>\bin\standalone.conf.bat`

The following table describes the Java options settings:

Java Options	Description
<code>-server</code>	Results in a slower startup but subsequent operations are faster.
<code>-De360.connection.channel</code> <code>-De360.mdm.host</code> <code>-De360.mdm.port</code>	<p>Application server communication protocol, host, and port.</p> <p>To deploy the MDM Hub applications on a JBoss port other than 4447, set the following Java options:</p> <ul style="list-style-type: none">- <code>-De360.connection.channel</code>. Set to the communication protocol that you want to use. Valid values are HTTP and HTTPS. Default is HTTP.- <code>-De360.mdm.host</code>. Set to the IP address of the JBoss host. <p>If the environment uses the HTTPS communication protocol and the security certificate is issued to a Fully Qualified Domain Name (FQDN), set to the FQDN.</p> <ul style="list-style-type: none">- <code>-De360.mdm.port</code>. Set to the JBoss remote port configured in place of 4447. <p>If you do not configure these parameters, Data Director screens that are based on the Entity 360 Framework might not work as expected.</p>

Java Options	Description
-Didd.mdm.host -Didd.mdm.port -Didd.protocol	Required for Data Director with subject areas. To deploy Data Director with subject areas, set the following Java options: <ul style="list-style-type: none"> - <code>-Didd.mdm.host</code>. Set to the host name or IP address of the application server host. - <code>-Didd.mdm.port</code>. Required to deploy using a non-default HTTP or HTTPS listener port. The property is used for deploying the subject area application during server initialization. Specifies the HTTP or HTTPS listener port used by the JVM for the applications. Default is 8080. - <code>-Didd.protocol</code>. Required property that is used for deploying the subject area application during server initialization. Specifies whether the communication protocol to use is HTTP or HTTPS. Default is HTTP.
-Djava.net.preferIPv4Stack	Specifies whether Java uses Internet Protocol version 4 (IPv4). If the operating system uses Internet Protocol version 6 (IPv6), set to <code>true</code> .
-Djavax.net.ssl.trustStore -Djavax.net.ssl.trustStorePassword	Required if you want to use an HTTPS port for the Process Server. The <code>-Djavax.net.ssl.trustStore</code> Java option specifies the path to the truststore file to use for validating client certificates. The <code>-Djavax.net.ssl.trustStorePassword</code> Java option specifies the password to access the truststore file.
-Djava.security.egd	Reduces the startup time of Data Director in Linux environment. Set the following value for the option: <code>Djava.security.egd=file:/dev/./urandom</code>
-Djboss.as.management.blocking.timeout	Time in seconds to wait for JBoss to deploy. To ensure that JBoss does not fail to start, you can set the value to 5000. Adjust the time period based on your environment. Default is 300. If you do not configure the parameter, you might encounter a JBoss deployment timeout.
-Djgroups.bind_addr	Interface on which JGroup must receive and send messages. Required in multinode or cluster environments. Ensure that each node binds to its own network interface.
-DFrameworksLogConfigurationPath	Path to the <code>log4j.xml</code> file.
-Dmdm.node.groupid	Specifies a group ID for Java Virtual Machines in the MDM Hub implementation. Required only if you want logical groupings of Hub Servers and Process Servers.

Java Options	Description
-Dsearch.service.port	Required if you want to use smart search with Solr. Required if you want to install multiple Process Servers on the same machine but on different JVMs and enable smart search on all the Process Servers on the machine. This Java option specifies the port used by the JVM for the search service. To avoid port conflicts, use the default port for the JVM of one Process Server, and set this Java option to the relevant port numbers for the JVMs of the remaining Process Servers.
-Dfile.encoding -Dorg.apache.catalina.connector.URI_ENCODING	Required if you want to use Informatica Data Director and use REST APIs to search for records. Set both the Java options to <code>UTF-8</code> to ensure that you can find and save records that contain UTF-8 characters.
- Dorg.apache.coyote.http11.Http11Protocol.MAX_HEADER_SIZE	Maximum size of the HTTP headers, in bytes. The search requests might fail if the header size is low. Set to <code>16384</code> .
-Dtask.pageSize=<maximum number of tasks>	Specifies the maximum number of ActiveVOS tasks that are retrieved for each request. Default is <code>5000</code> . Increase the number if your environment has a large number of tasks.
-Dstricttransportsecurity.flag	Specifies whether web browsers must convert all attempts to access Data Director using the HTTP requests to the HTTPS requests instead. Set to <code>true</code> .
-Xms	Initial heap size. Set to <code>2048m</code> .
-Xmx	Maximum JVM heap size. Set to 6 GB or higher. For example, to set the <code>-Xmx</code> to <code>6144m</code> , use the following <code>JAVA_OPTIONS</code> environment variable setting: <pre>set "JAVA_OPTIONS=-server ... -Xmx6144m"</pre>
XX:+UseCodeCacheFlushing	Specifies whether the JVM disposes of compiled code when the code cache is full.
-XX:ReservedCodeCacheSize	JIT code cache size. To enhance the performance of the MDM Hub environment, set to <code>512m</code> .
-XX:MaxMetaspaceSize	Maximum metaspace size. To prevent the JVM from running out of memory, set to <code>1G</code> .

Logical Grouping of Java Virtual Machine Example

By grouping Java Virtual Machines (JVMs), you get a logical group of Hub Servers and Process Servers. When you deploy the Hub Server and Process Server applications in a logical JVM group, communication

between the Hub Server and Process Server applications stay within the group. To group JVMs, you assign a group ID to each JVM in the MDM Hub environment.

Note: Process Server grouping is applicable to the cleanse and match process only. The logical groups are not applied to the internal server cache of the MDM Hub.

The following table shows an example of logical JVM groups:

JVM Group	JVM	Hub Server	Process Server
Group1	JVM1	Yes	Yes
Group1	JVM4	-	Yes
Group2	JVM2	Yes	Yes
Group3	JVM3	-	Yes

For JVM1, add the following Java option in the startup script:

```
-Dmdm.node.groupid=Group1
```

For JVM2, add the following Java option in the startup script:

```
-Dmdm.node.groupid=Group2
```

For JVM3, add the following Java option in the startup script:

```
-Dmdm.node.groupid=Group3
```

For JVM4, add the following Java option in the startup script:

```
-Dmdm.node.groupid=Group1
```

After you configure the JVMs, and deploy the Hub Servers and Process Servers, the groups have the following characteristics:

- Group1 has two Process Servers, Group2 has one Process Server, and Group3 has one Process Server.
- All cleanse and batch calls stay in their own group with the exception of search. For example, any real-time call on the Hub Server in Group1 affects only the Group1 Process Servers (JVM1 and JVM4).

Configure Server Properties for the Full Profile

Configure the server properties for the full profile of the standalone mode in the `standalone-full.xml` file. The file is in the following directory: `<JBoss installation directory>/standalone/configuration`. To configure the server properties, you can run the commands for the configuration from the JBoss Command Line Interface (CLI).

To use the JBoss CLI, perform the following steps:

1. Navigate to the following directory: `<JBoss installation directory>/bin`.
2. To launch the JBoss CLI, run the following script:
On UNIX. `jboss-cli.sh`
On Windows. `jboss-cli.bat`
3. To connect to the server, run the following command:
`connect`

For more information about configuring server properties, see the JBoss documentation.

Transaction Timeout

The transaction timeout property specifies the time in seconds to wait for the MDM Hub transactions to complete. Set the value based on your environment.

Command:

```
/subsystem=transactions:write-attribute(name=default-timeout,value=<timeout in seconds>)
```

Sample configuration:

```
<subsystem xmlns="urn:jboss:domain:transactions:4.0">
  ...
  <coordinator-environment default-timeout="3600"/>
</subsystem>
```

Maximum Post Size

The maximum post size property configures the maximum size in bytes of files that you upload. Set the value to the size limit of files that you want to attach in the Data Director application.

Set the value to 20000000 or higher. Default is 10000000.

Note: After installing the MDM Hub, set the same value for the Hub Server property

`cmx.file.max_file_size_mb` in the `cmxserver.properties` file.

Command:

```
/subsystem=undertow/server=default-server/<listener type>=<listener name>/:write-attribute(name=max-post-size,value=<maximum file size in bytes>)
```

Sample configuration:

```
<subsystem xmlns="urn:jboss:domain:undertow:4.0">
  ...
  <server name="default-server">
    <http-listener name="default" socket-binding="http" redirect-socket="https"
enable-http2="true" max-post-size="20000000"/>
    <https-listener name="https" socket-binding="https" security-
realm="ApplicationRealm" enable-http2="true" max-post-size="20000000"/>
    ...
  </host>
  </server>
  ...
</subsystem>
```

Remoting-Connector

The remoting-connector property configures the remoting-connector port and socket binding.

To log in to the Hub Console from a remote machine, set the port to 4447 and the socket binding to remoting.

Note: By default, remoting-connector security is disabled. If you want to configure remoting-connector security for the MDM Hub, ensure that you configure only the Elytron security framework that is supported.

Command:

```
/socket-binding-group=standard-sockets/socket-binding=remoting:add(port=4447)
```

```
/subsystem=remoting/connector=remoting-connector:add(socket-binding=remoting)
```

Sample configuration for remoting-connector port:

```
<socket-binding-group name="standard-sockets" default-interface="public" port-offset="{jboss.socket.binding.port-offset:0}">
  ...
  <socket-binding name="remoting" port="4447"/>
  ...
</socket-binding-group>
```


Sample configuration for remoting-connector socket binding:

```
<subsystem xmlns="urn:jboss:domain:remoting:4.0">
    ...
    <connector name="remoting-connector" socket-binding="remoting"/>
    ...
</subsystem>
```

Configure Transport Layer Security (TLS)

Important: To ensure secure communication, on the application where you deploy Multidomain MDM, disable TLS 1.0 and enable TLS 1.2.

For information about how to configure TLS, see the documentation for your application server.

Secure HTTP Response Headers

To secure your application server environment, use secure HTTP response headers. Change or remove headers, such as X-Powered-By and Server.

For information about how to change or remove HTTP response headers, see the documentation for your application server.

Create the ActiveVOS Console Administrative User

If you want to use ActiveVOS, create the ActiveVOS Console administrative user with the `abAdmin` role. If you do not create an administrative user, the Hub Server deployment fails. Use the ActiveVOS Console administrative user name and password when the Hub Server installer prompts you to enter the administrative user credentials for the ActiveVOS Console.

1. Change to the following directory:
`<JBoss installation directory>/bin`
2. To run the `add-user` utility, use the following script:

On UNIX. `add-user.sh`

On Windows. `add-user.bat`

3. Answer the prompts that appear.

The following table describes the values to specify for each prompt:

Prompt	Value to Specify
What type of user do you wish to add? a) Management User or b) Application User	To select Application User, enter <code>b</code> .
Realm (ApplicationRealm)	Realm name. Enter the realm name that you specified in the <code>login-module</code> that you added to the <code>standalone-full.xml</code> file.
Username	ActiveVOS Console administrator name.
Password	Password that complies with the JBoss password standard.

Prompt	Value to Specify
What roles do you want this user to belong to?	abAdmin.
About to add user <user name> for realm <realm name>. Is this correct?	To add the user, enter <i>yes</i> .
Is this new user going to be used for one AS process to connect to another AS process?	<i>yes</i> .

Start JBoss

Before you install the Hub Server and the Process Server, start the JBoss application server. Based on your environment, you either start standalone JBoss instances or JBoss cluster nodes.

Starting Standalone JBoss Instances

If you use standalone JBoss instances, start each instance on which you want to install the MDM Hub components.

1. Navigate to the following directory:

```
<JBoss installation directory>/bin
```

2. To start a JBoss instance, run the following command:

On UNIX. `standalone.sh -c standalone-full.xml -b 0.0.0.0 -Djboss.as.management.blocking.timeout=5000`

On Windows. `standalone.bat -c standalone-full.xml -b 0.0.0.0 -Djboss.as.management.blocking.timeout=5000`

JBoss starts on the available network interfaces and listens for the current host that is defined in the hosts file in the `/etc/hosts` directory. Adjust the timeout interval based on your environment.

3. If you have multiple JBoss instances on the same machine, to start the second and any subsequent JBoss instances, add the following argument to the startup command:

```
-Djboss.socket.binding.port-offset=<port offset range such as, 0,100,200,...n>
```

Starting JBoss Cluster Nodes

If you use a JBoss cluster environment, start the cluster nodes on which you want to install the MDM Hub components.

1. Navigate to the following directory:

```
<JBoss installation directory>/bin
```

2. To start a JBoss cluster node, run the following command on machines that have cluster nodes:

On UNIX. `standalone.sh -c standalone-full.xml -b 0.0.0.0 -Djboss.node.name=<Name of the cluster node> -Djboss.server.base.dir=../<node path> -Djboss.as.management.blocking.timeout=5000 -u <multicast address> -Djgroups.bind_addr=<bind address> -Djboss.socket.binding.port-offset=<port offset value> -Djboss.partition.name=<Partition name>`

On Windows. `standalone.bat -c standalone-full.xml -b 0.0.0.0 -Djboss.node.name=<Name of the cluster node> -Djboss.server.base.dir=../<node path> -Djboss.as.management.blocking.timeout=5000 -u <multicast address> -Djgroups.bind_addr=<bind address> -Djboss.socket.binding.port-offset=<port offset value> -Djboss.partition.name=<Partition name>`

Set the port offset value if multiple cluster nodes run on the same machine. Use the default partition name or ensure that the partition name is the same for all nodes that belong to a cluster. Adjust the timeout interval based on your environment.

Configure the Properties Files for Silent Installation

If you want to install the Hub Server and the Process Server without user interaction in silent mode, configure the installation properties files. You might want to perform a silent installation if you need multiple installations, or if you need to install on a machine cluster. A silent installation does not show any progress or failure messages.

The installer reads the silent installation properties file to determine the installation options. Ensure that you provide correct settings in the properties file because the silent installation process might complete successfully even if the settings are incorrect.

You can configure the following silent installation properties files:

- Hub Server. Required to install the Hub Server in silent mode.
- Process Server. Required to install the Process Server in silent mode.

Note: If you do not want to manually configure the silent installation properties file, you can use the `-r` command-line option during installation to generate the silent installation properties file.

Configuring the Hub Server Properties File

If you want to install the Hub Server in silent mode, configure the Hub Server properties file. Specify the options for the installation in the properties file, and save the file with a new name.

1. Find the `silentInstallServer_sample.properties` file in the following directory: `/silent_install/mrmserver`
2. Create a backup copy of the `silentInstallServer_sample.properties` file.
3. Open the file in a text editor, and configure the values of the installation parameters.
4. Save the properties file with a new name such as `silentInstallServer.properties`.

Configuring the Process Server Properties File

If you want to install the Process Server in silent mode, configure the Hub Server properties file. Specify the options for the installation in the properties file, and save the file with the new name.

1. Find the `silentInstallCleanse_sample.properties` file in the following directory: `/silent_install/mrmcleanse`
2. Create a backup copy of the `silentInstallCleanse_sample.properties` file.
3. Open the file in a text editor, and configure the values of the installation parameters.
4. Save the properties file with a name such as `silentInstallCleanse.properties`.

CHAPTER 3

Hub Store Installation

This chapter includes the following topics:

- [Create the MDM Hub Master Database, 29](#)
- [Create an Operational Reference Store, 31](#)
- [Import the Metadata into the MDM Hub Master Database, 32](#)
- [Import the Metadata into the Operational Reference Store, 34](#)

Create the MDM Hub Master Database

After you install Oracle, create an MDM Hub Master Database. If you want to create multiple MDM Hub Master Databases, ensure that you create each MDM Hub Master Database in a different schema. The default name of the MDM Hub Master Database is `CMX_SYSTEM`, but you can use a custom name.

Note: If you change the folder names in the distribution directory, metadata import fails.

If you want to use the Oracle multitenant feature, create the MDM Hub Master Database in a pluggable database (PDB).

1. Open a command prompt, and navigate to the following directory:

```
<MDM Hub distribution directory>/database/bin
```

2. To create the MDM Hub Master Database, run the following command:

```
On UNIX. ./sip_ant.sh create_system
```

```
On Windows. sip_ant.bat create_system
```

3. Answer the prompts described in the following table:

Note: The prompt displays default text in brackets. Press **Enter** to use the default value and go to the next prompt.

Prompts	Description
Enter the database type (ORACLE, MSSQL, DB2)	Database type. Specify <code>ORACLE</code> .
Enter Oracle Connection Type (service, sid). [service]	Connection type. Use one of the following values: <ul style="list-style-type: none"> - <code>SERVICE</code>. Uses the service name to connect to Oracle. - <code>SID</code>. Uses the Oracle System ID to connect to Oracle. Default is <code>SERVICE</code> .
Enter master user name [cmx_system]	User name to access the MDM Hub Master Database. Default is <code>cmx_system</code> .
Enter the database host name [localhost]	Name of the host that runs the database. Default is <code>localhost</code> . Important: In cluster environments, specify the absolute host name or the IP address to avoid caching issues.
Enter the database port number [1521]	Port number that the database listener uses. Default is <code>1521</code> .
Enter the database service name [orcl]	Name of the Oracle service. This prompt is displayed if the selected Oracle connection type is <code>SERVICE</code> . Default is <code>orcl</code> .
Enter database SID [orcl]	Name of the Oracle System ID. This prompt is displayed if the selected Oracle connection type is <code>SID</code> .
Enter Oracle Net connect identifier (TNS Name). [orcl]	TNS name that is used to connect to the Oracle database. Default is <code>orcl</code> .
Master Database Connect URL: "jdbc:oracle:thin:@//<host_name>:<port>/<service_name>"	Connect URL for the Oracle connection type <code>SERVICE</code> .
Enter master database user password	Password to access the MDM Hub Master Database.
Enter locale name from the list: de, en_US, fr, ja, ko, zh_CN. [en_US]	Operating system locale. Default is <code>en_US</code> .
Enter the DBA user name [SYS]	User name of the administrative user. Default is <code>SYS</code> .
Enter the DBA password	Password of the administrative user.
Enter the name of the MDM index tablespace [CMX_INDX]	Name of the tablespace to contain the index components for the MDM Hub Master Database. Default is <code>CMX_INDX</code> .
Enter the name of the MDM temporary tablespace (Not an Oracle temporary tablespace) [CMX_TEMP]	Name of the tablespace to contain the temporary components for the MDM Hub Master Database. Default is <code>CMX_TEMP</code> .
Enter the name of the Oracle temporary tablespace [TEMP]	Name of the Oracle temporary tablespace. Default is <code>TEMP</code> .

- To verify that the MDM Hub Master Database was created successfully, review `sip_ant.log` in the following directory:

<MDM Hub distribution directory>/database/bin

The `sip_ant.log` file logs any errors that might occur when you run the `sip_ant` script to create the MDM Hub Master Database.

Create an Operational Reference Store

After you complete the preinstallation tasks, create an Operational Reference Store (ORS). The default name of the ORS is `CMX_ORS`.

Note: If you change the folder names in the distribution directory, metadata import fails.

If you want to use the Oracle multitenant feature, create the ORS in a pluggable database (PDB).

- Open a command prompt, and navigate to the following directory:

<MDM Hub distribution directory>/database/bin

- To create an ORS, run the following command:

On UNIX. `./sip_ant.sh create_ors`

On Windows. `sip_ant.bat create_ors`

- Answer the prompts described in the following table:

Note: The prompts display default text in brackets. Press **Enter** to use the default value and go to the next prompt.

Prompts	Description
Enter the database type (ORACLE, MSSQL, DB2)	Database type. Specify <code>ORACLE</code> .
Enter Oracle Connection Type (service, sid). [service]	Connection type. Use one of the following values: - <code>SERVICE</code> . Uses the service name to connect to Oracle. - <code>SID</code> . Uses the Oracle System ID to connect to Oracle. Default is <code>SERVICE</code> .
Enter the Operational Reference Store schema host name [localhost]	Name of the host that is running the database. Default is <code>localhost</code> .
Enter the Operational Reference Store schema port number [1521]	Port number that the database listener uses. Default is <code>1521</code> .
Enter the Operational Reference Store database service name [orcl]	Name of the Oracle service. This prompt is displayed if the selected Oracle connection type is <code>SERVICE</code> .
Enter Oracle Net connect identifier (TNS Name) [orcl]	Oracle TNS name. Default is <code>orcl</code> .

Prompts	Description
ORS DB Connect URL: "jdbc:oracle:thin:@//<host_name>:<port>/<service_name>". Do you want to change the connect URL (y/n) [n]	Connect URL for the Oracle connection type SERVICE. You can type <code>y</code> to change the default connect URL. To use the default connect URL, type <code>n</code> .
Enter database SID [orcl]	Name of the Oracle System ID. This prompt is displayed if the selected Oracle connection type is SID.
Enter the Operational Reference Store database user name [cmx_ors]	User name to access the Operational Reference Store. Default is <code>cmx_ors</code> .
Enter the Operational Reference Store database user password	Password to access the Operational Reference Store.
Enter locale name from the list: de, en_US, fr, ja, ko, zh_CN. [en_US]	Operating system locale.
Enter the DBA user name [SYS]	User name of the administrative user. Default is <code>SYS</code> .
Enter the DBA password	Password of the administrative user.
Enter the name of the MDM index tablespace [CMX_INDX]	Name of the tablespace to contain the index components for the Operational Reference Store. Default is <code>CMX_INDX</code> .
Enter the name of the MDM temporary tablespace [CMX_TEMP]	Name of the tablespace to contain the temporary components for the Operational Reference Store. Default is <code>CMX_TEMP</code> .
Enter the name of the Oracle temporary tablespace [TEMP]	Name of the Oracle temporary tablespace. Default is <code>TEMP</code> .

- To verify that the ORS was created successfully, review `sip_ant.log` in the following directory:

```
<MDM Hub distribution directory>/database/bin
```

The `sip_ant.log` file logs any errors that might occur when you run the `sip_ant` script to create the ORS.

Import the Metadata into the MDM Hub Master Database

After you create the MDM Hub Master Database, import the initial metadata into the MDM Hub Master Database. The initial metadata includes repository tables and other objects that the MDM Hub requires in the Hub Store.

Note: If you change the folder names in the distribution directory, metadata import fails.

- Open a command prompt, and navigate to the following directory:

```
<MDM Hub distribution directory>/database/bin
```

- To import the initial metadata, run the following command:

On UNIX. `./sip_ant.sh import_system`

On Windows. `sip_ant.bat import_system`

3. Answer the prompts described in the following table:

Note: The prompts display default text in brackets. Press **Enter** to use the default value and go to the next prompt.

Prompts	Description
Enter the database type (ORACLE, MSSQL, DB2)	Database type. Specify <code>ORACLE</code> .
Enter Oracle Connection Type (service, sid). [service]	Connection type. Use one of the following values: SERVICE Uses the service name to connect to Oracle. SID Uses the Oracle System ID to connect to Oracle. Default is <code>SERVICE</code> .
Enter master user name [cmx_system]	User name to access the MDM Hub Master Database. Default is <code>cmx_system</code> .
Enter the database host name [localhost]	Name of the host that is running the database.
Enter the database port number [1521]	Port number that the database listener uses. Default is <code>1521</code> .
Enter the MDM Hub Master Database service name [orcl]	Name of the Oracle service. This prompt is displayed if the selected Oracle connection type is <code>SERVICE</code> . Default is <code>orcl</code> .
Enter database SID	Name of the Oracle System ID. This prompt is displayed if the selected Oracle connection type is <code>SID</code> .
Enter Oracle Net connect identifier (TNS Name). [orcl]	TNS name that is used to connect to the Oracle database. Default is <code>orcl</code> .
Master Database Connect URL: "jdbc:oracle:thin:@//<host_name>:<port>/<service_name>"	Connect URL for the Oracle connection type <code>SERVICE</code> .
Enter master database user password	Password to access the MDM Hub Master Database.
Enter locale name from the list: de, en_US, fr, ja, ko, zh_CN. [en_US]	Operating system locale. Default is <code>en_US</code> .

4. After you import the initial metadata, review the following log files for errors:

- `seed.log`. Contains database errors.
The `seed.log` file is in the following directory: `<MDM Hub installation directory>/database/bin/oracle`
- `sip_ant.log`. Contains user input errors.
The `sip_ant.log` file is in the following directory: `<distribution directory>/database/bin`

Import the Metadata into the Operational Reference Store

After you create the Operational Reference Store, import the initial metadata into the Operational Reference Store. The initial metadata includes repository tables and other objects that the MDM Hub requires in the Hub Store.

Note: If you change the folder names in the distribution directory, metadata import fails.

1. Open a command prompt, and navigate to the following directory:

```
<MDM Hub distribution directory>/database/bin
```

2. To import the initial metadata, run the following command:

On UNIX. `./sip_ant.sh import_ors`

On Windows. `sip_ant.bat import_ors`

3. Answer the prompts described in the following table:

Note: The prompts display default text in brackets. Press **Enter** to use the default value and go to the next prompt.

Prompts	Description
Enter the database type (ORACLE, MSSQL, DB2)	Database type. Specify <code>ORACLE</code> .
Enter Oracle Connection Type (service, sid). [service]	Connection type. Use one of the following values: SERVICE Uses the service name to connect to Oracle. SID Uses the Oracle System ID to connect to Oracle. Default is <code>SERVICE</code> .
Enter the Operational Reference Store database host name [localhost]	Name of the host that is running the database.
Enter the Operational Reference Store database port number [1521]	Port number that the database listener uses. Default is 1521.
Enter the Operational Reference Store database service name	Name of the Oracle service. This prompt is displayed if the selected Oracle connection type is <code>SERVICE</code> .
Enter Oracle Net connect identifier (TNS Name). [orcl]	TNS name that is used to connect to the Oracle database. Default is <code>orcl</code> .
ORS DB Connect URL: "jdbc:oracle:thin:@//<host_name>:<port>/<service_name>". Do you want to change the connect URL (y/n) [n] :	Connect URL for the Oracle connection type <code>SERVICE</code> . You can type <code>y</code> to change the default connect URL. To use the default connect URL, type <code>n</code> .
Enter database SID	Name of the Oracle System ID. This prompt is displayed if the selected Oracle connection type is <code>SID</code> .

Prompts	Description
Enter the Operational Reference Store database user name [cmx_ors]	User name to access the Operational Reference Store. Default is cmx_ors.
Enter the Operational Reference Store database user password	Password to access the Operational Reference Store.
Enter locale name from the list: de, en_US, fr, ja, ko, zh_CN. [en_US]	Operating system locale. Default is en_US.
Enter the integer code of Operational Reference Store Timeline Granularity: Year 5, Month 4, Day 3, Hour 2, Minute 1, Second 0 [3]	Specify timeline units to use. Default is days. Note: The timeline granularity that you configure cannot be modified later. For more information about timeline, see the <i>Multidomain MDM Configuration Guide</i> .

4. After you import the initial metadata, review the following log files for errors:

- seed.log. Contains database errors.
The seed.log file is in the following directory: <MDM Hub installation directory>/database/bin/oracle
- sip_ant.log. Contains user input errors.
The sip_ant.log file is in the following directory: <MDM Hub distribution directory>/database/bin

CHAPTER 4

Hub Store Post-Installation Tasks

This chapter includes the following topic:

- [Verify Access to Oracle Components, 36](#)

Verify Access to Oracle Components

Ensure that the Hub Store has access to the required Oracle components.

The Hub Store requires access to the following Oracle components:

- Oracle Java Virtual Machine
- Oracle XML Database
- ALL_CONSTRAINTS
- ALL_CONS_COLUMNS
- ALL_DIRECTORIES
- ALL_INDEXES
- ALL_IND_COLUMNS
- ALL_JOBS (used for migration)
- ALL_TABLES
- ALL_TAB_COLUMNS
- ALL_VIEWS
- DBMS_APPLICATION_INFO
- DBMS_JOB
- DBMS_OUTPUT
- DBMS_STANDARD
- DBMS_SQL
- DBMS_STATS
- DBMS_UTILITY
- DUAL
- PLITBLM
- STANDARD
- SYS_STUB_FOR_PURITY_ANALYSIS

USER_CONSTRAINTS
USER_CONS_COLUMNS
USER_EXTERNAL_TABLES
USER_INDEXES
USER_JAVA_POLICY
USER_OBJECTS
USER_SEQUENCES
USER_SOURCE
USER_TABLES
USER_TAB_COLS
USER_TAB_COLUMNS
USER_TRIGGERS
UTL_FILE
V\$NLS_PARAMETERS
V\$VERSION

CHAPTER 5



Hub Server Installation

This chapter includes the following topics:

- [Installing the Hub Server, 38](#)
- [Review the Installer Workflow, 39](#)
- [Collect the Installation Values, 40](#)
- [Install the Hub Server from the Installation Wizard, 45](#)
- [Install the Hub Server from the Command Line \(UNIX Only\), 46](#)
- [Install the Hub Server Silently, 46](#)
- [Install the Hub Server on Nodes in the Cluster, 47](#)

Installing the Hub Server

You can install the Hub Server using an installation wizard, a silent installation script, or, on UNIX systems, a command line script. If you complete the pre-installation tasks and collect the information you need before you start the installer, the installation process takes about 15 minutes.

	<p>STOP! Did you complete the pre-installation tasks? The installation will fail if you do not complete the pre-installation tasks before you run the installer.</p>
	<p>Installation Readiness Checklist</p> <ul style="list-style-type: none"><input type="checkbox"/> Created an MDM implementation plan.<input type="checkbox"/> Verified that your servers meet the system requirements.<input type="checkbox"/> Verified that your operating system and software versions are supported.<input type="checkbox"/> Reviewed the known limitations for your operating system and software versions.<input type="checkbox"/> Installed and configured a supported version of an application server.<input type="checkbox"/> Installed and configured a supported version of a database management system.<input type="checkbox"/> Performed the pre-installation configuration tasks for your environment.<input type="checkbox"/> Saved the MDM license file in an accessible location.

If you missed a task, go back to the preceding chapters for help in completing the task.

When you are ready to proceed, perform the following steps:

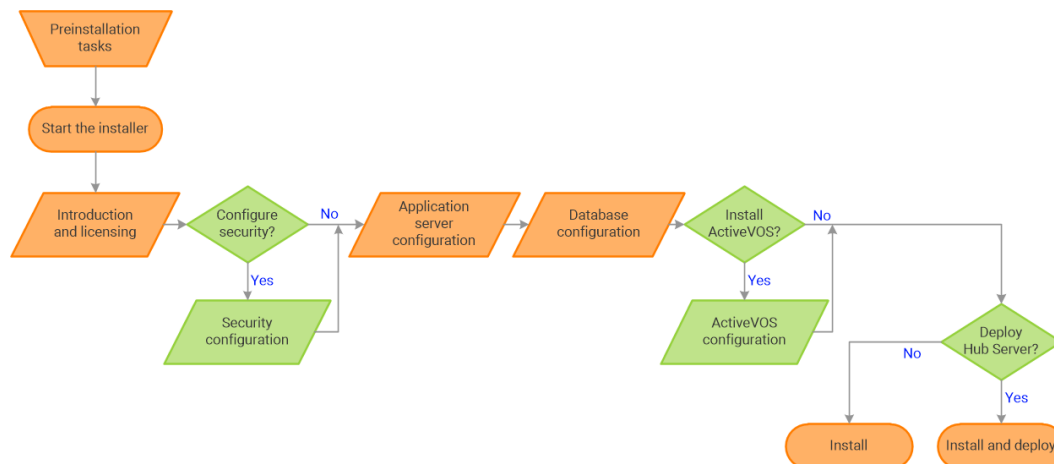
1. Review the installation workflow.

2. Collect all the values to enter during the installation.
3. Begin the installation by using the installation wizard or the command line, or in the silent mode.

Review the Installer Workflow

Whether you use the installation wizard, the command line prompts, or the silent installation script, the installer goes through the steps in the same order. You must follow the installation workflow keeping the decision points in mind.

The following diagram walks you through the steps in the Hub Server installer workflow:



Take a moment to identify the decision points in the installation process. Consult your implementation plan to understand which paths to take at each of the following decision points:

1. **Configure security?** Use the default security or configure your own security by specifying a password hashing algorithm and certificate provider.
2. **Install ActiveVOS?** Administrators use Informatica ActiveVOS to set up review workflows. Authorized users can validate proposed changes to records before the master data is updated.
Note: If you already have an installation of Informatica ActiveVOS, you do not need to install it again during the Hub Server installation.
3. **Deploy the Hub Server?** Allow the installer to run the `postInstallSetup` script. Among other important tasks, the script deploys the Hub Server to the application server. Alternatively, you can run the `postInstallSetup` script after you exit the installer.

Collect the Installation Values

Before you run the installer, collect the installation values. The installer will prompt you for information about your application server, database management system, and other components. The best practice is to print out these tables and add the values for your environment.

Application Server: Red Hat JBoss

Use the following table to collect the JBoss details that are required for the installation:

Property	Description	Default value	Server instance 1 value
JBoss Installation Directory	The location where JBoss is installed. Note: Do not include the <code>bin</code> directory.	-	
Configuration Name	Use the default configuration name. The Hub Server is deployed to the specified configuration.	standalone	standalone
Remote Port	The JBoss remote port. In a clustered environment, you identify multiple ports. Note: The JBoss remote port can conflict with the default database server port. If ports conflict, change one of the ports to resolve the conflict. For more information about changing ports, see the JBoss documentation.	4447	
Management Port	JBoss HTTP management port. The HTTPS management port is not supported. If port offset is configured for the application server, add the offset value to the default value. For example, if the port offset is 100, the management port value is 10090, which is (9990 + 100).	9990	

In a clustered environment, add details for the other JBoss instances to the following table:

Property	Server instance 2 value	Server instance 3 value	Server instance 4 value
JBoss Installation Directory			
Configuration Name			
Remote Port			
Management Native Port			

Database: Oracle Database

Use the following table to collect the Oracle Database details that are required for the installation:

Property	Description	Default value	Installation value
Server	Host name of the server where Oracle Database resides.	localhost	
Port	TCP port number of the Oracle listener that runs on the Oracle Database server. The Hub Server uses this port to communicate with Oracle Database.	1521	
Connection Type	Type of connection that you defined when you set up Oracle Database.	Service	
Service Name	Name of the Oracle Service that you defined.	orcl	
Oracle SID	Name of the Oracle System ID that you defined in the <code>tnsnames.ora</code> file. Note: The TNS names must be the same for both the Hub Server and MDM Process Server machines.	orcl	
Master Database Schema Name	Name of the schema for the MDM Master Database.	cmx_system	
Master Database Schema Password	Password for the MDM Master Database user.	-	

Security - Optional

You can choose to configure the hash algorithm, the certificate provider, or both.

Hash Key and Hash Algorithm

To configure a hash algorithm, you must implement the Java abstract class

`com.siperian.sam.security.hashing.algorithms.HashAlgorithm` in the `siperian-server-hash.jar` file.

The JAR file is located in the following directory: `<MDM installation directory>/hub/server/lib/hashings`

Use the following table to collect the hash algorithm details that were used in the Java abstract class implementation in the `siperian-server-hash.jar` file:

Property	Description	Default value	Installation value
Hash Key	Optional. A sequence of up to 32 hexadecimal characters with no delimiters. The key size can be up to 128 bits. Store the key securely. Caution: If your custom hash key is exposed or lost, you must reset all user passwords.	-	
Hash Algorithm	List of configured algorithms. To configure a custom algorithm, select Other .	SHA-3	
Name	Name of the custom hash algorithm.	-	
Implementation File	Location of the custom hash algorithm archive. Note: The compressed file must contain all the necessary JAR files and supporting files.	-	
Canonical Class Name	Canonical class name for the hash algorithm implementation. For example: <code>\$_HASHING_CLASS_NAME\$</code>	-	

Certificate Provider

To implement a custom certificate provider, you must implement the `PKIUtil.java` interface in the `siperian-server-pkiutil.jar` file. The JAR file is located in the following directory: `<MDM installation directory>/hub/server/lib/pkiutils`

Use the following table to collect the details of the custom certificate provider that were used in the Java abstract class implementation in the `siperian-server-pkiutil.jar` file:

Property	Description	Default value	Installation value
Certificate Provider	By default, MDM authenticates trusted applications. To configure a custom provider, select Other .	Default	
Implementation File	Name of the custom certificate provider.	-	
Class Name	Class name for the certificate provider implementation.	-	

Hub Console

The Hub Console requires the server details to connect to the Hub Server machine.

Use the following table to collect the server details that the Hub Console requires:

Property	Description	Default value	Installation value
Publicly Accessible Host Name	IP address or publicly accessible host name (FQDN) of the server to which the application server binds.	-	
HTTP Port	HTTP port of the server that the Hub Console must use.	-	

Informatica ActiveVOS - Optional

For more information about Informatica ActiveVOS, ActiveVOS Central, or ActiveVOS Server, see the [Informatica ActiveVOS](#) documentation.

Use the following table to collect the details that are required for ActiveVOS installation:

Property	Description	Default value	Installation value
ActiveVOS Server Installation Directory	An empty directory where you want to install the ActiveVOS server.	<MDM Hub installation directory>/avos/server	
Connection Type	Type of connection that you defined when you set up Oracle Database.	Service Name	
Service Name	Name of the Oracle Service that you defined.	orcl	
Oracle SID	Name of the Oracle System ID that you defined in the tnsnames.ora file.	orcl	
Server	Host name or IP address of the machine hosting the Oracle Database that contains the ActiveVOS schema.	localhost	
Port	TCP port number of the Oracle listener that runs on the server. The Hub Server uses this port to communicate with the Oracle Database server.	1521	
ActiveVOS Schema Name	Name of the ActiveVOS schema user.	avos	
ActiveVOS Schema Password	Password for the ActiveVOS schema user.	-	
Web Services URL	Host and port where the ActiveVOS Server runs. You choose to use either the http or https protocol. The Hub Server uses the same URL that ActiveVOS Central (also called Process Central) uses to call the ActiveVOS Server. The URL is called the Process Central AeTaskService URL in the Informatica ActiveVOS documentation and has the following format: http://[hostname.domainname]:[port]/active-bpel/services/AeB4PTaskClient-taskOperations.	http://localhost:8080	

Property	Description	Default value	Installation value
ActiveVOS Server Installer File	The Multidomain MDM distribution package contains the installer for the ActiveVOS Server.	ActiveVOS_Server_<operating system>_<version>	
Process Console User Name	An authorized user for the ActiveVOS Process Console.	-	
Process Console Password	Password for the ActiveVOS Process Console user.	-	

Product Usage Toolkit

The product usage toolkit sends information about your MDM environment to Informatica. The information is used by Informatica Global Customer Support to help troubleshoot and provide recommendations for your environment. If you do not want the toolkit to send any information to Informatica, you can disable the toolkit after you install MDM.

Use the following table to collect the details that are required for installing the product usage toolkit:

Property	Description	Default value	Installation value
Industry	Type of industry that best matches your organization's business.	-	
Environment	Type of environment that you are installing in. If you install from the command line, enter one of the following numbers: - 1. Production environment - 2. Test or QA environment - 3. Development environment	-	
Does your network have a proxy server?	If yes, provide details about the proxy server.	No	
Host	Name or IP address of the proxy server.	-	
Port	Port number used by the proxy server.	-	
Domain Name	If your proxy server is part of a domain, the name of the domain.	-	
User Name	If you use a secure proxy server, the name of a user that can access MDM.	-	
Password	Password of the user.	-	

Install the Hub Server from the Installation Wizard

Use the installation wizard when you want to install the Hub Server in graphical mode. The installation wizard guides you through the installation.

You must use the same user name to install the Hub Server and the Process Server.

1. Start the application server.

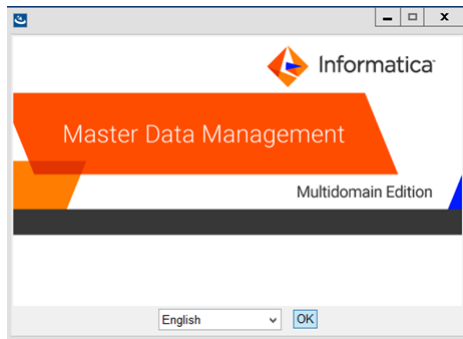
2. Navigate to the following directory:

```
<MDM Hub distribution directory>/<operating system name>/mrmsserver
```

3. Start the installer by performing the task for your operating system:

- **UNIX.** From the command line, run `./hub_install.bin`.
- **Windows.** From the File Explorer, double-click `hub_install.exe`.

The Hub Server installation wizard starts.



Tip: If the installation wizard does not start, verify that a supported version of Java is installed and included in your classpath or environment variable.

4. Choose a language and click **OK**.

The **Introduction** window appears.

5. Follow the online instructions. When prompted, enter the installation values that you collected.

6. At the end of the installation, in the **Configuration Summary** window, review the options that you selected.

7. If you need to make changes, go back to the appropriate window by clicking **Previous**. When you are done, click **Next** to return to the final window.

8. Click **Install**.

9. **Next step:** The next step depends on whether you chose to deploy the Hub Server from the installer.

- If you chose to deploy the Hub Server from the installer, you do not need to deploy the Hub Server as part of the post-installation tasks.
- If you chose to deploy the Hub Server later, you must deploy the Hub Server as part of the post-installation tasks.

Install the Hub Server from the Command Line (UNIX Only)

On UNIX, you can install the Hub Server from the command line. Run the script to start the command line installation.

1. Start the application server.
2. From the command line, navigate to the following directory:

```
<MDM Hub distribution directory>/<operating system name>/mrmserver
```
3. Run the following command:

```
./hub_install.bin -i console
```

The Hub Server installation prompts appear.
4. Enter the installation values that you collected.
To use the default value shown in brackets, press **Enter**.
5. **Next step:** After the installation completes, the next step depends on whether you chose to deploy the Hub Server.
 - If you chose to deploy the Hub Server from the installer, you do not need to deploy the Hub Server as part of the post-installation tasks.
 - If you chose to deploy the Hub Server later, you must deploy the Hub Server as part of the post-installation tasks.

Install the Hub Server Silently

You can install the Hub Server in silent mode. Before you start the silent installation, ensure that you configured the silent installation properties file.

1. Start the application server.
2. Copy the silent installation properties file to the target environment.
3. In the target environment, run the command for your operating system:
 - **UNIX.** `./hub_install.bin -f <absolute path to edited installer properties file>`
 - **Windows.** `hub_install.exe -f <absolute path to edited installer properties file>`

The silent installer runs in the background. The process can take a while.
4. If you chose to have the installer deploy the Hub Server, check `postinstallSetup.log` to verify that the installation was successful.
The log file is in the following directory:

```
<MDM Hub installation directory>/hub/server/logs
```
5. **Next step:** After the installation completes, the next step depends on whether you chose to deploy the Hub Server.
 - If you chose to deploy the Hub Server from the installer, you do not need to deploy the Hub Server as part of the post-installation tasks.
 - If you chose to deploy the Hub Server later, you must deploy the Hub Server as part of the post-installation tasks.

Install the Hub Server on Nodes in the Cluster

In application server cluster environments, install the Hub Server on all the nodes of the cluster to which you must deploy the Hub Server application. You must complete the installation on one node of a cluster before you proceed to install on another node of a cluster.

For example, a JBoss cluster has two nodes that run in host1 and host2 and use RMI ports 4447 and 4448. You need to install the Hub Server on node1 and node2. You must complete the Hub Server installation on any one node, such as node2, before you start installation on the other node, node1.

Ensure that the directory structure of the Hub Server installation is the same on all the nodes.

1. Start the JBoss cluster nodes on which you want to install the Hub Server.
2. Navigate to the following directory:

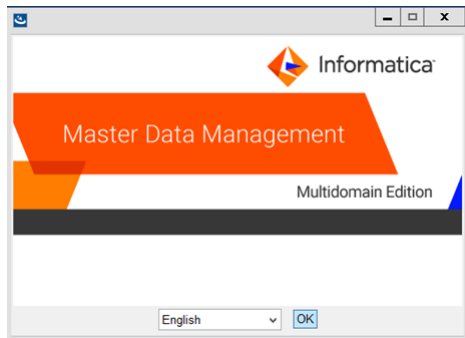
```
<MDM Hub distribution directory>/<operating system name>/mrmserver
```

3. To start the Hub Server installer on a cluster node, run the command for your operating system:

UNIX. ./hub_install.bin

Windows. hub_install.exe

The Hub Server installation wizard starts.



4. Follow the online instructions. When prompted, enter the installation values that you collected.
5. **Next step:** After the installation completes, deploy the Hub Server manually on all the nodes that have the installation.

If you performed an automatic deployment for the primary node, you do not need to manually deploy on the primary node.

You can use any node in the JBoss cluster to access the Hub Server.

CHAPTER 6

Hub Server Post-Installation Tasks

This chapter includes the following topics:

- [Copy the Installation Log Files, 49](#)
- [Verify the Version and Build Number, 49](#)
- [Install and Configure Elasticsearch, 50](#)
- [Configure the Hub Console Client \(Conditional\), 50](#)
- [Configure the MDM Hub Master Database Name, 50](#)
- [Verify and Configure Application Server Settings \(Conditional\), 51](#)
- [Deploy the Hub Server Applications \(Conditional\), 52](#)
- [Use a Script to Deploy the Hub Server Applications \(Conditional\), 53](#)
- [Manually Deploy the Hub Server Applications \(Conditional\), 54](#)
- [Configure Metadata Caching \(Optional\), 61](#)
- [Start the Hub Console, 63](#)
- [Register an Operational Reference Store, 64](#)
- [Registering Oracle Configuration Manager \(Optional\), 66](#)
- [Setting Up Oracle Configuration Manager for ActiveVOS \(Optional\), 66](#)
- [Additional Application Server Configuration \(Optional\), 68](#)

Copy the Installation Log Files

The installation log files are useful for troubleshooting the Hub Server installation process. Copy the log files to the installation documentation directory. Informatica Global Customer Support might request copies of the log files if you contact them regarding installation issues.

The following table describes the different types of installation log files:

Log File Type	Description
Installation log	<ul style="list-style-type: none">- File name. <code>Informatica_MDM_Hub_Server_Install_<timestamp>.xml</code>- Location. <code><MDM Hub installation directory>/hub/server/logs</code>- Contents. Directories and registry entries that are created, names of the files installed and commands run, and status for each installed file.
Installation prerequisites log	<ul style="list-style-type: none">- File name. <code>installPrereq.log</code>- Location. <code><MDM Hub installation directory>/hub/server/logs</code>- Contents. Logs of prerequisite checks performed by the installer.
Debug log	<ul style="list-style-type: none">- File name. <code>infamdm_installer_debug.txt</code>- Location. <code><MDM Hub installation directory>/hub/server</code>- Contents. Detailed information about the choices that are made during the installation, and the actions performed by the installer.
Post-installation setup log	<ul style="list-style-type: none">- File name. <code>postInstallSetup.log</code>- Location. <code><MDM Hub installation directory>/hub/server/logs</code>- Contents. Summary of actions performed by the installer during the post-installation process and the errors in the post-installation process.
Hub Server log	<ul style="list-style-type: none">- File name. <code>cmxserver.log</code>- Location. <code><MDM Hub installation directory>/hub/server/logs</code>- Contents. Summary of the Hub Server operations.
JBoss log	<ul style="list-style-type: none">- File name. <code>server.log</code>- Location. <code><JBoss installation directory>/standalone/log</code>- Contents. JBoss event logs and error messages.

Verify the Version and Build Number

Ensure that the correct version and build number of the Hub Server is installed.

1. Open a command prompt, and navigate to the following directory: `<MDM Hub installation directory>/hub/server/bin`

2. To verify the Hub Server version and build number, run the following command:

On UNIX. `versionInfo.sh`

On Windows. `versionInfo.bat`

Note: For AIX systems, change the `versionInfo.sh` script to run Java from the `<Java home>/jre/bin` directory.

Install and Configure Elasticsearch

To use search, install and setup Elasticsearch for the MDM Hub.

For more information about installing and configuring search, see the "Search with Elasticsearch" chapter in the *Multidomain MDM Configuration Guide*.

Configure the Hub Console Client (Conditional)

The Hub Console requires the host name and port properties in the `build.properties` file to connect to the Hub Server machine. You can override the host name and port number when you launch the Hub Console.

Edit the properties file in the following scenarios:

- If HTTPS is enabled for the application server and you need to use an HTTPS port.
- In a multi-node or a cluster environment, if you copied the Hub Server installation directory from one node to the other nodes, edit on each node.

1. Open the `build.properties` file that is in the following directory:

```
<MDM Hub installation directory>/hub/server/bin
```

2. Edit the following properties:

- `console.hostname`. Specify the IP address or publicly accessible host name (FQDN) of the server to which the application server binds.
- `console.webport`. Specify the HTTP or HTTPS port of the current node that the Hub Console must use.

3. Save the file.

4. Set relevant values for the `cmx.appserver.console.mode` property in the `cmxserver.properties` file in the following directory:

```
<MDM Hub installation directory>/hub/server/resources
```

Set the value to the communication protocol that you use, either HTTP or HTTPS.

After you edit the `build.properties` file, ensure that you run the `postInstallSetup` script to deploy the Hub Server applications.

Configure the MDM Hub Master Database Name

If the MDM Hub Master Database has a name other than `cmx_system`, configure the MDM Hub Master Database name in the `cmxserver.properties` file.

1. Open the `cmxserver.properties` file in the following directory:

```
<MDM Hub installation directory>/hub/server/resources
```

2. Set the `cmx.server.masterdatabase.schemaname` property to the name that you specified for the MDM Hub Master Database.

You specified the name for the MDM Hub Master Database when you created it.

Verify and Configure Application Server Settings (Conditional)

Verify and configure application server settings based on the requirements of the MDM Hub environment.

The following table describes the configuration tasks that you can perform:

Configuration Task	Description
Editing the application server settings	Required if you run the <code>postInstallSetup</code> script during the installation and the script fails because of incorrect application server settings.
Configuring the Hub Server for a JBoss multi-node or cluster environment	Required if you installed the Hub Server in a JBoss multi-node or cluster environment.

Editing the Application Server Settings

If you run the `postInstallSetup` script during the installation and the script fails because of incorrect application server settings, edit the `build.properties` file. Also, if you want to change any application server settings, edit the file.

1. Open `build.properties` file in the following directory:

```
<MDM Hub installation directory>/hub/server/bin
```

2. Edit the application server settings and save the file.

After you edit the `build.properties` file, ensure that you run the `postInstallSetup` script to deploy the Hub Server applications.

Configuring the Hub Server for a JBoss Multi-node or Cluster Environment

If you installed the Hub Server in a JBoss multi-node or a cluster environment, configure the Hub Server for the JBoss environment. To configure the Hub Server for the JBoss environment, configure the JBoss environment properties in the `cmxserver.properties` file.

For example, if a JBoss cluster or the multi-node environment has two nodes, which run on `host1` and `host2`, configure the JBoss environment properties on both the nodes.

1. On all nodes in the environment, open the `cmxserver.properties` file in the following directory:

```
<MDM Hub installation directory>/hub/server/resources
```

2. Configure the following JBoss environment properties:

Property	Description
<code>jboss.cluster</code>	Specifies whether EJB servers have multiple nodes or are clustered for the Hub Server. Add the <code>jboss.cluster</code> property, and set it to <code>true</code> .
<code>cmx.appserver.hostname</code>	Specifies machine names of the JBoss multi-node or the cluster environment. The machine names must be in the following format: <code><host name>.<domain>.com</code> For example, if the cluster or the multi-node environment has two nodes that run on <code>host1</code> and <code>host2</code> and use RMI ports <code>4447</code> and <code>4448</code> , set <code>cmx.appserver.hostname=host1.<domain>.com,host2.<domain>.com</code>
<code>cmx.appserver.rmi.port</code>	Specifies remote port numbers. For example, if the cluster or the multi-node environment has two nodes, which run on <code>host1</code> and <code>host2</code> and use RMI ports <code>4447</code> and <code>4448</code> , set <code>cmx.appserver.rmi.port=4447,4448</code> Note: Separate the port numbers by a comma with no space between them. Ensure that the order of the port numbers corresponds to the order of the host names.

Deploy the Hub Server Applications (Conditional)

You must deploy the Hub Server applications on the same machine on which you install the Hub Server.

The Hub Server applications must be able to find the Hub Server installation to which they belong. Therefore, do not transfer the EAR files for deployment on another machine. For example, you install the Hub Server on a test machine, and then deploy the applications on the production machine. The applications that you deploy on the production machine cannot find the installation on the test machine for information such as logging configuration.

You need to deploy the Hub Server applications in any of the following scenarios:

- The installation is in an application server multi-node environment or cluster environment.
- The installation completes, but the `postInstallSetup` script that you run during the installation fails.
- You skipped the `postInstallSetup` script during the installation.

If the installation is in an application server multi-node or a cluster environment, perform the following steps to complete the deployment:

1. Deploy the Hub Server applications on one node.
2. Copy all the files from the `certificates` directory on the node with the deployment to the `certificates` directory on all the other nodes. The `certificates` directory is in the following location:
`<MDM Hub installation directory>/hub/server/resources`
3. Repackage the Hub Server EAR files on all the nodes that the certificates are copied to. The repackaging process updates the `hubConsole.jar` file with the correct certificates.
 - a. Navigate to the following directory:
`<MDM Hub installation directory>/hub/server/bin`
 - b. Run the following command:

On UNIX.

```
./sip_ant.sh repack
```

On Windows.

```
sip_ant.bat repack
```

4. Deploy the Hub Server applications on the other nodes.

To deploy the Hub Server applications, use one of the following procedures described in the following table:

Procedure	Description
Use a script for deployment	You run the <code>postInstallSetup</code> script to deploy the Hub Server applications. Also, the script creates data sources and configures JMS message queues.
Manual deployment	You manually deploy the Hub Server applications. Also, you must manually create data sources and configure JMS message queues.

Use a Script to Deploy the Hub Server Applications (Conditional)

If you skipped the `postInstallSetup` script during the installation, run the script. The post-installation process deploys the Hub Server applications, creates data sources, and configures JMS message queues.

1. Open a command prompt, and change to the following directory:

```
<MDM Hub installation directory>/hub/server
```

2. Run the `postInstallSetup` script.

Note: If you did not install the ActiveVOS version that is bundled with the MDM Hub installer, do not include the ActiveVOS user names and passwords in the command.

On UNIX.

```
./postInstallSetup.sh -Ddatabase.password=<MDM Hub Master database password>  
-Davos.username=<ActiveVOS Console username>  
-Davos.password=<ActiveVOS Console password>  
-Davos.jdbc.database.username=<ActiveVOS database username>  
-Davos.jdbc.database.password=<ActiveVOS database password>
```

Note: If you include the exclamation mark (!) in your password, you must include a backslash before the exclamation mark. For example, if your password is `!!cmx!!`, enter the following password: `\\!\\cmx\\!\\`

On Windows.

```
postInstallSetup.bat  
-Ddatabase.password=<MDM Hub Master database password>  
-Davos.username=<ActiveVOS Console username>  
-Davos.password=<ActiveVOS Console password>  
-Davos.jdbc.database.username=<ActiveVOS database username>  
-Davos.jdbc.database.password=<ActiveVOS database password>
```

The ActiveVOS Console credentials are the same credentials as the administrative user in the application server.

The ActiveVOS database credentials are the same credentials that were used to run the `create_bpm` script.

Manually Deploy the Hub Server Applications (Conditional)

If you skipped the `postInstallSetup` script during the installation or the `postInstallSetup` script fails, you can manually deploy the Hub Server applications. Ensure that you deploy the Hub Server applications from the Hub Server installation directory.

To deploy the Hub Server applications, perform the following tasks:

1. Creating data sources
2. Configuring JMS message queues
3. Deploying the Hub Server applications
4. Configuring JMS message queues in the Hub Server
5. Configuring server resources for Informatica Data Director (IDD)

Step 1. Creating Data Sources

Before you manually deploy the Hub Server applications, create data sources. Also, if you want to configure multiple Process Servers or troubleshoot installation issues, create data sources.

1. Create the following directory structure under `<JBoss installation directory>/modules/:`

```
/com/informatica/mdm/jdbc/main
```

2. In the `main` directory, create the `module.xml` file with the following content:

```
<?xml version="1.0" encoding="UTF-8"?>
<module xmlns="urn:jboss:module:1.0" name="com.informatica.mdm.jdbc">
  <resources>
    <resource-root path="<JDBC driver file name>"/>
  </resources>
  <dependencies>
    <module name="javax.api"/>
    <module name="javax.transaction.api"/>
  </dependencies>
</module>
```

3. Download and copy the supported version of the JDBC drivers to the `main` directory.
4. Open the JBoss Management console, and click **Profile**.
The **Datasources** page appears.
5. Click **Connector > Datasources**.
6. Click the **XA Datasources** tab.
The **JDBC XA Datasources** page appears.
7. Click **Add**.
The **Create XA Datasource** dialog box appears.
8. Enter values in the **Name** and **JNDI Name** fields, and click **Next**.

The following table lists the syntax of the values to specify:

Field Name	Syntax of Value
Name	jdbc/siperian-<Oracle host name>-orcl-<Operational Reference Store name>-ds
JNDI Name	java:jboss/datasources/jdbc/siperian-<Oracle host name>-orcl-<Operational Reference Store name>-ds

The **XA Datasource** page appears.

- In the XA Datasource Class field, enter `com.informatica.mdm.jdbc`, and click **Next**.

The **XA Properties** page appears.

- Enter the key and value pairs, and click **Next**.

The following table lists the key value pairs:

Key	Value
ConnectionProperties	oracle.jdbc.J2EE13Compliant=true
URL	Use one of the following values based on the Oracle connection type: For SERVICE. <code>jdbc:oracle:thin:@//<Oracle host name>:1521:<service name></code> For SID. <code>jdbc:oracle:thin:@<Oracle host name>:1521:orcl</code>

The **Connection Settings** window appears.

- Enter values for the connection settings, and click **Done**.

The following table describes the connection fields:

Field Name	Description
Username	Name of the Operational Reference Store
Password	Password to access the Operational Reference Store

The **JDBC XA Datasources** page appears.

- In the Selection section, edit the properties under the **Pool** tab.

Property	Value
Min Pool Size	5
Max Pool Size	100

Property	Value
Strict Minimum	false
Prefill enabled	false
Flush Strategy	FailingConnectionOnly
Idle Timeout	0
Track Statements	false

13. In the Selection section, edit the properties under the **Validation** tab.

Property	Value
Valid Connection Checker	Not applicable
Check Valid Sql	Not applicable
Validate On Match	false
Background Validation	false
Validation Millis	0
Stale Connection Checker	Not applicable
Exception Sorter	org.jboss.jca.adapters.jdbc.extensions.oracle.OracleExceptionSorter

14. Select the data source that you added, and click **Enable**.
The data source that you added is enabled.

Step 2. Configuring JMS Message Queues

Before you manually deploy the Hub Server applications, configure JMS message queues. Also, to troubleshoot issues, you might need to manually configure JMS message queues. For example, if the automated queue creation process fails or the queues accidentally drop after installation, you need to manually configure message queues.

The Services Integration Framework (SIF) uses a message-driven bean on the JMS message queue to process incoming asynchronous SIF requests. Configure the message queue and the connection factory for the application server that you use for the MDM Hub implementation. When you configure a JMS message queue, you also create a connection factory.

To configure the JMS message queue, perform the following tasks:

1. Create a connection factory.
2. Create a JMS message queue for SIF requests.
3. Verify the JMS message queue and create a JMS message queue for search.

Step 1. Create a Connection Factory

You can manually create a connection factory.

1. Open the JBoss Management console.
2. Click **Profile > Messaging > Destinations**.
The **JMS Messaging Provider** page appears.
3. To view the settings of the **default** JMS messaging provider, click **View**.
The **Messaging Destinations** page appears.
4. Click the **Connection Factories** link.
The configured connection factories appear.
5. To add a connection factory, click **Add**.
The **Create Connection Factory** dialog box appears.
6. Enter connection factory details.

The following table describes the connection factory details fields:

Field Name	Description
Name	Connection Factory name. Specify <code>java:/siperian.mrm.jms.xaconnectionfactory</code> .
JNDI Names	JNDI Name. Specify <code>java:/siperian.mrm.jms.xaconnectionfactory</code> .
Connector	Connector that you use to connect to the server. The following connectors are available: <ul style="list-style-type: none">- in-vm. Use the in-vm connector to connect to a local server.- netty. Use the netty connector to connect to a remote server.

7. Click **Save**.
The connection factory is created.

Step 2. Create a JMS Message Queue for SIF Requests

To create a JMS message queue, use the JBoss Management console.

1. Open the JBoss Management console.
2. Click **Profile > Messaging > Destinations**.
The **JMS Messaging Provider** page appears.
3. Click **View** to view the settings of the **default** JMS messaging provider.
The **JMS Queue destination** page appears.
4. Click **Add**.
The **Create JMS Queue** dialog box appears.

- Specify the following options:

Option	Value
Name	java:/queue/siperian.sif.jms.queue
JNDI Name	java:/queue/siperian.sif.jms.queue
Durable	Clear the Durable check box.

- Click **Save**

The queue is created.

Step 3. Create a JMS Message Queue for Search

The search feature requires a JMS queue to enable full-text search within Data Director. You can add the queue for search from the JBoss Management console or by editing the `standalone-full.xml` file. If you edit the file, you can verify that the connection pool and the JMS queue for SIF requests appear in the file.

- Navigate to the following directory:

```
<JBoss installation directory>/standalone/configuration
```

- Open the following file in a text editor: `standalone-full.xml`
- Search for `queue/siperian.sif.jms.queue`.

The following code sample show the configuration of the connection pool

`siperian.mrm.jms.xaconnectionfactory` and the JMS queue `queue/siperian.sif.jms.queue`:

```
<jms-connection-factories>
...
<pooled-connection-factory name="siperian.mrm.jms.xaconnectionfactory">
  <transaction mode="xa"/>
  <connectors>
    <connector-ref connector-name="in-vm"/>
  </connectors>
  <entries>
    <entry name="java:/siperian.mrm.jms.xaconnectionfactory"/>
  </entries>
</pooled-connection-factory>
</jms-connection-factories>

<jms-destinations>
...
<jms-queue name="queue/siperian.sif.jms.queue">
  <entry name="queue/siperian.sif.jms.queue"/>
  <entry name="jboss/exported/queue/siperian.sif.jms.queue"/>
</jms-queue>
...
</jms-destinations>
```

- After the tag `</jms-queue>`, insert the following code to create the JMS queue for search.

```
<jms-queue name="queue/informatica.mdm.sss.jms.queue">
  <entry name="queue/informatica.mdm.sss.jms.queue"/>
  <entry name="jboss/exported/queue/informatica.mdm.sss.jms.queue"/>
</jms-queue>
```

- Save the file.

Step 3. Deploying the Hub Server Applications

You can manually deploy the Hub Server applications. Ensure that you deploy the Hub Server applications from the Hub Server installation directory.

1. Stop the JBoss application server.
2. If you have any existing deployments, remove the following deployment files from the JBoss deployment directory:

Deployment File Name	Description
siperian-mrm.ear	Required. The Hub Server application.
provisioning-ear.ear	Required. The Provisioning tool application.
entity360view-ear.ear	Optional. The Entity 360 framework.
ave_jboss.ear	Required. The ActiveVOS Server application.
activevos-central.war	Required. The ActiveVOS Central application.

3. Copy the deployment files listed in the preceding step from the source to the target directories:

Source: Hub Server installation directory

Target: <JBoss installation directory>\standalone\deployments

4. Start the application server.

For more information about deploying applications, see the JBoss documentation.

Step 4. Configuring JMS Message Queues on the Hub Server

After you manually deploy the Hub Server applications, configure JMS message queues on the Hub Server.

To configure the JMS message queue on the Hub Server, perform the following tasks:

1. Start the Hub Console.
2. Add a message queue server.
3. Add a message queue.

Step 1. Start the Hub Console

To access the MDM Hub, start the Hub Console.

1. Open a browser window and enter the following URL:

```
http://<MDM Hub host>:<port number>/cmx/
```

The Hub Console launch page appears.

2. Enter your user name and password, and then click **Download**.

The MDM Hub application JAR file that is required to launch the Hub Console downloads.

Note: If you cannot download the MDM Hub application JAR file, contact your MDM administrator. The administrator can distribute the JAR file from the following directory: <MDM Hub installation directory>/hub/server/resources/hub

3. Run the application JAR file.

To specify the maximum memory allocation pool for the application, run the following command:

```
java -Xmx<n>G -jar hubConsole.jar
```

Where <n> is the maximum memory allocation in GB.

The **Informatica MDM Hub Login** dialog box appears.

4. Enter your user name and password.
5. If you want to connect to a specific Hub Server node or if you use a load balancer or a reverse proxy server, override the pre-configured connection parameters in the Connect URL field.

Enter the parameters in the following format:

```
<host name>:<port name>
```

Where, host name and port name are either the host name and port name of the Hub Server or that of the load balancer or the reverse proxy server that you use.

6. Click **OK**.

The **Change database** dialog box appears.

7. Select the target database.

The target database is the MDM Hub Master Database.

8. Select a language from the list, and click **Connect**.

The Hub Console user interface appears in the language that you select. If you need to change the language in which the Hub Console user interface appears, restart the Hub Console with the language of your choice.

Step 2. Add a Message Queue Server

Before you add a message queue, you must add a message queue server to the MDM Hub implementation.

1. In the Hub Console, click **Message Queues** under the Configuration workbench.
2. Click **Write Lock > Acquire Lock**.
3. Right-click the middle pane of the Message Queues tool, and then click **Add Message Queue Server**.

The **Add Message Queue Server** dialog box appears.

4. Enter the message queue server details.

The following table describes the fields that you use to configure the JMS message queue server:

Field Name	Value
Connection Factory Name	Name of the connection factory. Specify <code>java:/siperian.mrm.jms.xaconnectionfactory</code> .
Display Name	Name of the message queue server that must appear in the Hub Console. Specify <code>java:/siperian.mrm.jms.xaconnectionfactory</code> .

5. Click **OK**.

The message queue server is added.

Step 3. Add a Message Queue

You can add the custom message queue to a message queue server.

1. In the Hub Console, click **Message Queues** under the Configuration workbench.
2. Click **Write Lock > Acquire Lock**.
3. Right-click the message queue server in the middle pane of the Message Queues tool, and then click **Add Message Queue**.

The **Add Message Queue** dialog box appears.

4. Enter JMS message queue details.

The following table describes the JMS message queue fields:

Field Name	Value
Queue Name	Name of the message queue. Specify <code>queue/siperian.sif.test.jms.queue</code> .
Display Name	Name of the message queue that must appear in the Hub Console. Specify <code>queue/siperian.sif.test.jms.queue</code> .

5. Click **OK**.
6. In the right pane, select the **Use with message triggers** option.
7. Click **Test**.

The result of the message queue test appears.

Step 5. Configuring Server Resources for Informatica Data Director

If you want to use Informatica Data Director (IDD), configure the JNDI URL resource.

1. Open the `standalone-full.xml` file in the following directory:
`<JBoss installation directory>/standalone/configuration`
2. Add the `simple name` configuration as shown in the following code:

In the subsystem with the name `urn:jboss:domain:naming:<n.n>`, add the following `simple name` configuration within the `bindings` element:

```
<simple name="java:jboss/url/hubserver/home" value="file:///<Hub Server installation directory>" type="java.net.URL"/>
```

Configure Metadata Caching (Optional)

Metadata caches manage items such as data objects, repository objects, and search tokens. The MDM Hub uses Infinispan for metadata caching. Infinispan is installed with the Hub Server. For the caches that the Hub Server uses, the Infinispan configuration file contains default attribute values.

Run the MDM Hub with the default attribute values for the caches. If you experience performance issues, you can fine-tune the attribute values to better suit your environment.

The following table summarizes the default attribute values:

Infinispan Element and Attribute	Default Value	Description
locking acquire-timeout	60000	Maximum time during which the Hub Server can try to acquire a lock.
transaction stop-timeout	30000	When a cache stops, this attribute sets the maximum time that Infinispan waits while the Hub Server finishes remote and local transactions.
transport cluster	infinispan-cluster	Name for the underlying group communication cluster.
transport stack	UDP	Type of configuration: UDP or TCP. The configurations are defined in the <code>jgroups-udp.xml</code> file and the <code>jgroups-tcp.xml</code> file.
transport node-name	<code>\$node\$</code>	Name of the current node. The Hub Server sets this attribute. The node-name defaults to a combination of the host name and a random number. The number differentiates multiple nodes on the same host.
transport machine	<code>\$machine\$</code>	ID of the machine where the node runs. The Hub Server sets this attribute.
expiration lifespan	--	Maximum lifespan of a cache entry in milliseconds. When a cache entry exceeds its lifespan, the entry expires within the cluster. If you need to optimize performance, increase the lifespan for the following caches: <code>DISABLE_WHEN_LOCK</code> , <code>DATA_OBJECTS</code> , and <code>REPOS_OBJECTS</code> . For example, you can increase the lifespan from one hour (3600000) to one day (86400000). Each cache has its own default value for this attribute. To find the default values, open the <code>inifinispanspanConfig.xml</code> file.
expiration interval	--	Maximum interval for checking the lifespan. If you need to optimize performance, increase the interval for the following caches: <code>DISABLE_WHEN_LOCK</code> , <code>DATA_OBJECTS</code> , and <code>REPOS_OBJECTS</code> . For example, you can increase the interval from five seconds (5000) to five minutes (300000). Each cache has its own default value for this attribute. To find the default values, open the <code>inifinispanspanConfig.xml</code> file.

Editing Infinispan Attributes

To configure metadata caching attributes, edit the `inifinispanspanConfig.xml` file for the Hub Server. For help with the Infinispan configuration, see the Infinispan documentation.

Note: The Process Server also has an Infinispan configuration file. The default attribute values should be sufficient, however if you notice issues with the performance of the Process Server, you can fine-tune the attribute values.

1. Navigate to the following directory: `<MDM Hub installation directory>/hub/server/resources`
2. Make a backup copy of the following file: `inifinispanspanConfig.xml`
3. Open the `inifinispanspanConfig.xml` file and find the Infinispan version number, which appears in the `xsi:schemaLocation` attribute.

4. Review the documentation for the Infinispan version.

Note: In the following URLs, substitute the version number wherever the path contains `##`.

- To view the configuration schema, go to the URL that is contained in the `xsi:schemaLocation` attribute in the file.
- To learn about the attributes, go to <https://docs.jboss.org/infinispan/<##.x>/configdocs/>
- To learn about Infinispan, go to <http://infinispan.org/docs/<##.x>> and select the "Frequently Asked Questions" link.

5. Edit the file and save it.

Start the Hub Console

To access the MDM Hub, start the Hub Console by using an HTTP or HTTPS connection.

Before you start the Hub Console, ensure that you have the following information:

- Host name and port number for the URL
- User name and password

1. Open a browser window and enter the following URL:

```
http://<MDM Hub host>:<port number>/cmx/
```

The Hub Console launch page appears.

2. Enter your user name and password, and then click **Download**.

The MDM Hub application JAR file that is required to launch the Hub Console downloads.

Note: If you cannot download the MDM Hub application JAR file, contact your MDM administrator. The administrator can distribute the JAR file from the following directory: `<MDM Hub installation directory>/hub/server/resources/hub`

3. Run the application JAR file.

To specify the maximum memory allocation pool for the application, run the following command:

```
java -Xmx<n>G -jar hubConsole.jar
```

Where `<n>` is the maximum memory allocation in GB.

The **Informatica MDM Hub Login** dialog box appears.

4. Enter your user name and password.

5. If you want to connect to a specific Hub Server node or if you use a load balancer or a reverse proxy server, override the pre-configured connection parameters in the Connect URL field.

Enter the parameters in the following format:

```
<host name>:<port name>
```

Where, host name and port name are either the host name and port name of the Hub Server or that of the load balancer or the reverse proxy server that you use.

6. Click **OK**.

The **Change database** dialog box appears.

7. Select the target database.

The target database is the MDM Hub Master Database.

8. Select a language from the list, and click **Connect**.

The Hub Console user interface appears in the language that you select. If you need to change the language in which the Hub Console user interface appears, restart the Hub Console with the language of your choice.

Register an Operational Reference Store

After you create an Operational Reference Store, you must register it through the Hub Console. Register an Operational Reference Store with a single MDM Hub Master Database.

1. Start the Hub Console.
The **Change database** dialog box appears.
2. Select **MDM Hub Master Database**, and click **Connect**.
3. Under the **Configuration** workbench, click the **Databases** tool.
4. From the **Write Lock** menu, click **Acquire Lock**.
5. In the Databases pane, click the **Register database** button.
The **Informatica MDM Hub Connection Wizard** appears.
6. Select the Oracle database type option, and click **Next**.
7. Configure connection properties for the database.

- a. Select an Oracle connection method, and click **Next**.

The following table describes the Oracle connection methods that you can select:

Connection Method	Description
Service	Connects to Oracle by using the service name.
SID	Connects to Oracle by using the Oracle System ID.

For more information about SERVICE and SID names, see the Oracle documentation.

The **Connection Properties** page appears.

- b. Specify the connection properties for the connection type that you select, and click **Next**.

The following table describes the connection properties:

Property	Description
Database Display Name	Operational Reference Store name that must appear in the Hub Console.
Machine Identifier	Prefix given to keys to uniquely identify records from the Hub Store instance.

Property	Description
Database hostname	IP address or name of the server that hosts the Oracle database.
SID	Oracle System Identifier that refers to the instance of the Oracle database running on the server. The SID field appears if you selected the SID connection type.
Service	Name of the Oracle SERVICE used to connect to the Oracle database. The Service field appears if the you selected the Service connection type.
Port	The TCP port of the Oracle listener running on the Oracle database server. The default is 1521.
Oracle TNS Name	Database name on the network as defined in the <code>TNSNAMES.ORA</code> file. You set the Oracle TNS name when you install the Oracle database. For more information about the Oracle TNS name, see the Oracle documentation.
Schema Name	Name of the Operational Reference Store.
Password	Password associated with the Operational Reference Store user name.
DDM connection URL	Optional. URL to connect to the Dynamic Data Masking application. The URL is similar to the URL that you use to connect to the database, except that the Dynamic Data Masking application URL uses the Dynamic Data Masking host name and port number.

Note: The **Schema Name** and the **User Name** are both the names of the Operational Reference Store that you specified when you created the Operational Reference Store. If you need this information, consult your database administrator.

The **Summary** page appears.

- c. Review the summary, and specify additional connection properties.

The following table lists additional connection properties that you can configure:

Property	Description
Connection URL	<p>Connect URL. The Connection Wizard generates the connect URL by default.</p> <p>The following list shows the format of the connect URL for the Oracle connection types:</p> <ul style="list-style-type: none"> - Service connection type. <code>jdbc:oracle:thin:@//database_host:port/service_name</code> - SID connection type. <code>jdbc:oracle:thin:@//database_host:port:sid</code> <p>For a service connection type, you have the option to customize and later test a different connection URL.</p>
Create data source after registration	<p>Select to create the data source on the application server after registration. If you do not select the option, you must manually configure the data source.</p> <p>Note: In application server cluster environments, manually create the data sources and connection pools for the Operational Reference Stores.</p>

- d. For a service connection type, if you want to change the default URL, click the **Edit** button, specify the URL, and then click **OK**.

8. Click **Finish**.

The **Registering Database** dialog box appears.

9. Click **OK**.
The MDM Hub registers the Operational Reference Store.
10. Select the Operational Reference Store that you registered, and click the **Test database connection** button.
The Test Database dialog box displays the result of the database connection test.
11. Click **OK**.
The Operational Reference Store is registered, and the connection to the database is tested.

Registering Oracle Configuration Manager (Optional)

Oracle Configuration Manager (OCM) collects data for all transactions between the applications and databases installed in your MDM environment. You must register OCM through the Hub Console with a single MDM Hub Master Database.

1. Start the Hub Console.
The **Change database** dialog box appears.
2. Select **MDM Hub Master Database**, and click **Connect**.
3. Under the **Configuration** workbench, click the **Databases** tool.
4. From the **Write Lock** menu, click **Acquire Lock**.
5. In the Databases pane, click the **Register database** button.
The **Informatica MDM Hub Connection Wizard** appears.
6. Select the **Service** Oracle connection method, and click **Next**.
The **Connection Properties** page appears.
7. In the **Connection URL** field, enter the following OCM server connection URL:


```
jdbc:oracle:thin:@(description=(address_list=(address=(protocol=tcps) (port=2484)
(host=invlrcon19.informatica.com)) (address=(protocol=tcp) (port=1521)
(host=invlrcon21.informatica.com)))
(connect_data=(SERVICE_NAME=ORCL19C.informatica.com)))
```
8. Click **Finish**
The **Registering Database** dialog box appears.
9. Click **OK**
The MDM Hub registers Oracle Configuration Manager.

Setting Up Oracle Configuration Manager for ActiveVOS (Optional)

You can set up ActiveVOS to support Oracle Configuration Manager by adding a customized Java Database Connectivity (JDBC) URL.

1. Open a command prompt.

2. **Navigate to the following directory:**

```
infamdm installation directory>\conf\avos.install.properties
```

3. **Edit the avos.jdbc.url property. Enter the following custom JDBC URL link:**

```
jdbc:oracle:thin:@(description=(address_list=(address=(protocol=tcps) (port=2484)
(host=invlrcon19.informatica.com)) (address=(protocol=tcp)
(port=1521) (host=invlrcon21.informatica.com)))
(connect_data=(SERVICE_NAME=ORCL19C.informatica.com)))
```

4. **Edit the avos.jdbc.database.url property. Enter the following ActiveVOS database connection URL:**

```
jdbc.database.url=jdbc:oracle:thin\:@(description\=(address_list\=(address
\=(protocol\=tcps) (port\=2484) (host\=invlrcon19.informatica.com)) (address\=(protocol
\=tcp) (port\=1521) (host\=invlrcon21.informatica.com))) (connect_data\=(SERVICE_NAME
\=ORCL19C.informatica.com)))
```

5. **Navigate to the following directory:**

```
<MDM Hub installation directory>\hub\server\bin\build.properties
```

6. **Edit the avos.jdbc.database.url property. Enter the following ActiveVOS database connection URL:**

```
activevos.db.jdbc.url=jdbc:oracle:thin:@(description=(address_list=(address=(protocol
=tcps) (port=2484) (host=invlrcon19.informatica.com)) (address=(protocol=tcp) (port=1521)
(host=invlrcon21.informatica.com)))
(connect_data=(SERVICE_NAME=ORCL19C.informatica.com)))
```

7. **Open a command prompt.**

8. **Navigate to the following directory:**

```
<MDM Hub installation directory>/hub/server/bin
```

9. **Run the following command:**

- **In UNIX.**

```
sip_ant.sh avos.deploy -Ddatabase.password=<master database password> -
Davos.username=<activeVOS console username> -Davos.password=<activeVOS console
password> -Davos.jdbc.database.username=<avos database username> -
Davos.jdbc.database.password=<avos database Password> -
Davos.jdbc.database.url=<JDBC database URL>
```

- **In Windows.**

```
sip_ant.bat avos.deploy -Ddatabase.password=<master database password> -
Davos.username=<activeVOS console username> -Davos.password=<activeVOS console
password> -Davos.jdbc.database.username=<avos database username> -
Davos.jdbc.database.password=<avos database Password> -
Davos.jdbc.database.url=<JDBC database URL>
```

ActiveVOS is setup with OCM

Additional Application Server Configuration (Optional)

Perform additional JBoss configuration based on the requirements of the MDM Hub environment.

The following table describes the configurations that you can perform:

Configuration	Description
Configuring JBoss for standalone Process Server instances	Required to configure JBoss for standalone Process Server instances in the following scenarios: <ul style="list-style-type: none">- You want to install a Process Server instance on a JBoss instance on which you do not have the Hub Server installed.- You want to install multiple, standalone Process Server instances.
Configuring EJB security	Required if you want to configure EJB security at the JBoss application server level.

Configuring JBoss for Standalone Process Server Instances

To install a Process Server instance on a JBoss instance on which you do not have the Hub Server installed, configure the JBoss instance. Also, if you want to install multiple Process Server instances, configure a separate JBoss instance for each additional Process Server.

- ▶ Copy the JDBC files from the JBoss instance of the Hub Server to the JBoss instance on which you want to deploy the Process Servers.

The JDBC files are in the following directory: `<JBoss installation directory>/modules/com/informatica/mdm/jdbc/main`

Configuring EJB Security

You can configure EJB security at the JBoss application server level or at the Hub Server level to prevent unauthorized access to data and other resources in the MDM Hub. To configure EJB security at the JBoss application server level, enable the JBoss remoting-connector security.

1. Log in to the Hub Console and change the Hub Console password to a password that adheres to the JBoss password policy.

Note: Ensure that the password that you set adheres to the JBoss password policy and the configured MDM Hub global password policy. This is important because the same password needs to be set for the Hub Console and for JBoss.

For information about the MDM Hub global password policy, see the *Multidomain MDM Configuration Guide*.

 - a. Disable remoting-connector security.
 - b. Change the Hub Console password to adhere to the JBoss password policy.
 1. Log in to the Hub Console, change the database to the MDM Hub Master Database, and click **Connect**.
 2. Select the **Users** tool under **Configuration** workbenches and acquire a write lock.

3. Select the `admin` user under the **User** tab, and click the **Change password** icon.
The **Change Password** dialog box appears.
 4. Change the password to adhere to the JBoss password policy, and click **OK**.
2. Enable the remoting-connector security in the `standalone-full.xml` file.
 - a. Open the `standalone-full.xml` file in the following directory:
`<JBoss installation directory>/standalone/configuration`
 - b. Add the `security-realm` attribute as shown in the following code:
In the subsystem with the name `urn:jboss:domain:remoting:<n.n>`, add the following attribute to the `remoting-connector` configuration:

```
security-realm=<"<security realm name">
```

3. In JBoss, register the MDM Hub users that must have access to the Hub Server.

- a. Run the following script to register the MDM Hub users:
On UNIX. `<JBoss installation directory>/bin/add-user.sh`
On Windows. `<JBoss installation directory>\bin\add-user.bat`
- b. Answer the prompts in the following table:

Prompt	Value
What type of user do you wish to add? a) Management User (mgmt-users.properties) b) Application User (application-users.properties)	Specify the option b.
Realm (ApplicationRealm)	Use the name of the security realm. Default is ApplicationRealm.
Username	User name of the MDM Hub user.
Password	Password of the MDM Hub user that adheres to JBoss password policy.
What roles do you want this user to belong to?	You must specify <code>hubconsole</code> .

4. Enable JBoss security on the Hub Server.
 - a. Open `cmxserver.properties` in the following directory:
`<MDM Hub installation directory>/hub/server/resources`
 - b. Uncomment the following property:

```
#cmx.jboss7.security.enabled=true
```
5. Repackage the Hub Server EAR files.
 - a. Navigate to the following directory:
`<MDM Hub installation directory>/hub/server/bin`
 - b. Run the following command:
On UNIX.

```
./sip_ant.sh repackage
```

On Windows.

```
sip_ant.bat repackage
```

6. Deploy the Hub Server EAR files.
 - a. Stop the JBoss application server.
 - b. If you have any existing deployments, remove the following deployment files from the JBoss deployment directory:

Deployment File Name	Description
siperian-mrm.ear	Required. The Hub Server application.
provisioning-ear.ear	Required. The Provisioning tool application.
entity360view-ear.ear	Optional. The Entity 360 framework.
ave_jboss.ear	Required. The ActiveVOS Server application.
activevos-central.war	Required. The ActiveVOS Central application.

- c. Copy the deployment files listed in the preceding step from the source to the target directories:
Source: Hub Server installation directory
Target: <JBoss installation directory>\standalone\deployments
 - d. Start the application server.
For more information about deploying applications, see the JBoss documentation.

CHAPTER 7



Process Server Installation

This chapter includes the following topics:

- [Installing the Process Server, 71](#)
- [Review the Installer Workflow, 72](#)
- [Collect the Installation Values, 73](#)
- [Install the Process Server from the Installation Wizard, 75](#)
- [Install the Process Server from the Command Line \(UNIX Only\), 76](#)
- [Install the Process Server Silently, 77](#)
- [Install the Process Server on Nodes in the Cluster, 77](#)

Installing the Process Server

You can install the Process Server using an installation wizard, a silent installation script, or, on UNIX systems, a command line script. If you complete the pre-installation tasks and collect the information you need before you start the installer, the installation process takes about 15 minutes.

	<p>STOP! Did you complete the pre-installation tasks? The installation will fail if you do not complete the pre-installation tasks before you run the installer.</p>
	<p>Installation Readiness Checklist</p> <ul style="list-style-type: none"><input type="checkbox"/> Created an MDM implementation plan.<input type="checkbox"/> Verified that your servers meet the system requirements.<input type="checkbox"/> Verified that your operating system and software versions are supported.<input type="checkbox"/> Reviewed the known limitations for your operating system and software versions.<input type="checkbox"/> Installed and configured a supported version of an application server.<input type="checkbox"/> Installed and configured a supported version of a database management system.<input type="checkbox"/> Performed the pre-installation configuration tasks for your environment.<input type="checkbox"/> Saved the MDM license file in an accessible location.

If you missed a task, go back to the preceding chapters for help in completing the task.

When you are ready to proceed, perform the following steps:

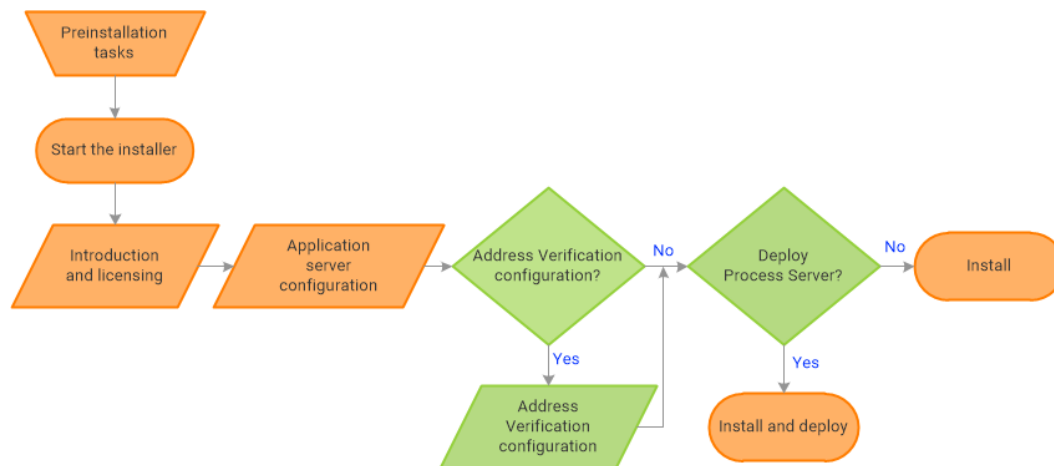
1. Review the installation workflow.

2. Collect all the values to enter during the installation.
3. Begin the installation by using the installation wizard or the command line, or in the silent mode.

Review the Installer Workflow

Whether you use the installation wizard, the command line prompts, or the silent installation script, the installer goes through the steps in the same order. You must follow the installation workflow keeping the decision points in mind.

The following diagram walks you through the steps in the Process Server installer workflow:



Take a moment to identify the decision points in the installation process. Consult your implementation plan to understand which paths to take at each of the following decision points:

1. **Configure Address Verification?** Administrators use Informatica Address Verification to interpret, process, and format the addresses included in records. Authorized users can validate, correct and certify addresses that are included in records before the master data is updated.
Note: If you already installed a supported version of Informatica Address Verification, configure the Configuration and Parameters file locations and the type of address processing that you want to perform. Otherwise, use the default file locations and specify the type of address verification that you want to perform.
2. **Deploy the Process Server?** Allow the installer to run the `postInstallSetup` script. Among other important tasks, the script deploys the Process Server to the application server. Alternatively, you can run the `postInstallSetup` script after you exit the installer.

Collect the Installation Values

Before you run the installer, collect the installation values. The installer will prompt you for information about your application server, database management system, and other components. The best practice is to print out these tables and add the values for your environment.

Application Server: Red Hat JBoss

Use the following table to collect the JBoss details that are required for the installation:

Property	Description	Default value	Server instance 1 value
JBoss Installation Directory	The location where JBoss is installed. Note: Do not include the <code>bin</code> directory.	-	
Configuration Name	Use the default configuration name. The Process Server is deployed to the specified configuration.	standalone	standalone
Remote Port	The JBoss remote port. In a clustered environment, you identify multiple ports. Note: The JBoss remote port can conflict with the default database server port. If ports conflict, change one of the ports to resolve the conflict. For more information about changing ports, see the JBoss documentation.	4447	
Management Port	JBoss HTTP management port. The HTTPS management port is not supported. If port offset is configured for the application server, add the offset value to the default value. For example, if the port offset is 100, the management port value is 10090, which is (9990 + 100).	9990	

In a clustered environment, add details for the other JBoss instances to the following table:

Property	Server instance 2 value	Server instance 3 value	Server instance 4 value
JBoss Installation Directory			
Configuration Name			
Remote Port			
Management Native Port			

Informatica Address Verification

Note: Informatica Address Verification was previously called AddressDoctor.

If you plan to install Informatica Address Verification, record the following properties:

Property	Description	Default values	Server instance 1 value
Configuration File	<p>The location of the Informatica Address Verification configuration file <code>SetConfig.xml</code>. You use the file for general configurations, such as reference address database, unlock code for Informatica Address Verification, and memory settings.</p> <p>If you already installed Address Verification, use the location of your configuration file. Otherwise, use the default file location</p>	<MDM Hub installation directory>\hub\cleanse\resources\AddressDoctor\5\SetConfig.xml	
Parameters File	<p>The location of the Informatica Address Verification parameters file <code>Parameters.xml</code>. You use the file to configure how Informatica Address Verification interprets, processes, and formats the addresses.</p> <p>If you already installed Address Verification, use the location of your parameters file. Otherwise, use the default file location</p>	<MDM Hub installation directory>\hub\cleanse\resources\AddressDoctor\5\Parameters.xml	
Correction Type	<p>The type of address processing that you want to perform.</p> <p>Use one of the following correction types:</p> <ul style="list-style-type: none"> - <code>PARAMETERS_DEFAULT</code>. Default correction type. Indicates the use of the correction type defined in the <code>Parameters.xml</code> file. - <code>PARSE_ONLY</code>. Parses and assigns address elements to the appropriate fields. - <code>CORRECT_ONLY</code>. Validates addresses against the postal data and corrects the addresses. - <code>CERTIFY_ONLY</code>. Verifies addresses in accordance with the postal certifications to meet country-specific postal authority requirements. - <code>CORRECT_THEN_CERTIFY</code>. Validates addresses against the postal data and corrects the addresses. Then verifies addresses in accordance with postal certifications to meet country-specific postal authority requirements. - <code>TRY_CERTIFY_THEN_CORRECT</code>. Verifies addresses in accordance with postal certifications to meet country-specific postal authority requirements. If the address verifications fail, the process validates the addresses against the postal data and corrects the addresses. 	PARAMETERS_DEFAULT	

Product Usage Toolkit

The product usage toolkit sends information about your MDM environment to Informatica. The information is used by Informatica Global Customer Support to help troubleshoot and provide recommendations for your environment. If you do not want the toolkit to send any information to Informatica, you can disable the toolkit after you install MDM.

Use the following table to collect the details that are required for installing the product usage toolkit:

Property	Description	Default value	Installation value
Industry	Type of industry that best matches your organization's business.	-	
Environment	Type of environment that you are installing in. If you install from the command line, enter one of the following numbers: - 1. Production environment - 2. Test or QA environment - 3. Development environment	-	
Does your network have a proxy server?	If yes, provide details about the proxy server.	No	
Host	Name or IP address of the proxy server.	-	
Port	Port number used by the proxy server.	-	
Domain Name	If your proxy server is part of a domain, the name of the domain.	-	
User Name	If you use a secure proxy server, the name of a user that can access MDM.	-	
Password	Password of the user.	-	

Install the Process Server from the Installation Wizard

Use the installation wizard when you want to install the Process Server in graphical mode. The installation wizard guides you through the installation.

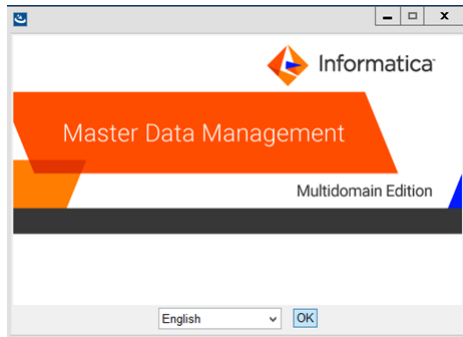
You must use the same user name to install the Hub Server and the Process Server.

1. Start the application server.
2. Navigate to the following directory:

```
<MDM Hub distribution directory>/<operating system name>/mrmcleanse
```

3. Start the installer by performing the task for your operating system:
 - **UNIX.** From the command line, run `./hub_cleanse_install.bin`.
 - **Windows.** From the File Explorer, double-click `hub_cleanse_install.exe`.

The Process Server installation wizard starts.



4. Choose a language and click **OK**.
The **Introduction** window appears.
5. Follow the online instructions. When prompted, enter the installation values that you collected.
6. At the end of the installation, in the **Configuration Summary** window, review the options that you selected.
7. If you need to make changes, go back to the appropriate window by clicking **Previous**. When you are done, click **Next** to return to the final window.
8. Click **Install**.
9. **Next step:** The next step depends on whether you chose to deploy the Process Server from the installer.
 - If you chose to deploy the Process Server from the installer, you do not need to deploy the Process Server as part of the post-installation tasks.
 - If you chose to deploy the Process Server later, you must deploy the Process Server as part of the post-installation tasks.

Install the Process Server from the Command Line (UNIX Only)

On UNIX, you can install the Process Server from the command line. Run the script to start the command line installation.

1. Start the application server.
2. From the command line, navigate to the following directory:


```
<MDM Hub distribution directory>/<operating system name>/mrmcleanse
```
3. Run the following command:


```
./hub_cleanse_install.bin -i console
```

 The Process Server installation prompts appear.
4. Enter the installation values that you collected.

To use the default value shown in brackets, press **Enter**.

5. **Next step:** After the installation completes, the next step depends on whether you chose to deploy the Process Server.
 - If you chose to deploy the Process Server from the installer, you do not need to deploy the Process Server as part of the post-installation tasks.
 - If you chose to deploy the Process Server later, you must deploy the Process Server as part of the post-installation tasks.

Install the Process Server Silently

You can install the Process Server in silent mode. Before you start the silent installation, ensure that you configured the silent installation properties file.

1. Start the application server.
2. Copy the silent installation properties file to the target environment.
3. In the target environment, run the command for your operating system:
 - **UNIX.** `./hub_install.bin -f <absolute path to edited installer properties file>`
 - **Windows.** `hub_install.exe -f <absolute path to edited installer properties file>`

The silent installer runs in the background. The process can take a while.

4. If you chose to have the installer deploy the Process Server, check `postinstallSetup.log` to verify whether the installation was successful.

The log file is in the following directory:

```
<MDM Hub installation directory>/hub/server/logs
```

5. **Next step:** After the installation completes, the next step depends on whether you chose to deploy the Process Server.
 - If you chose to deploy the Process Server from the installer, you do not need to deploy the Process Server as part of the post-installation tasks.
 - If you chose to deploy the Process Server later, you must deploy the Process Server as part of the post-installation tasks.

Install the Process Server on Nodes in the Cluster

In application server cluster environments, install the Process Server on all nodes of the cluster to which you must deploy the Process Server application. You must complete the installation on one node of a cluster before you proceed to install on another node of a cluster.

For example, a JBoss cluster has two nodes that run in `host1` and `host2` and use RMI ports 4447 and 4448. You need to install the Process Server on `node1` and `node2`. You must complete the Process Server installation on any one node, such as `node2`, before you start installation on the other node, `node1`.

Ensure that the directory structure of the Process Server installation is the same on all the nodes.

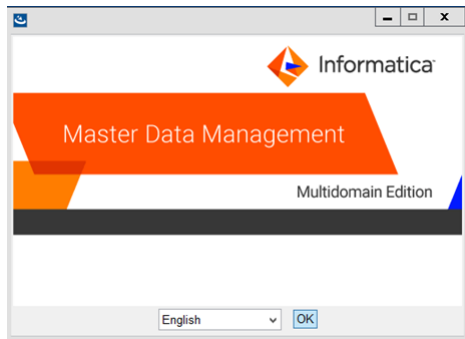
1. Start the JBoss application server on each cluster node.

2. Navigate to the following directory:
`<MDM Hub distribution directory>/<operating system name>/mrmcleanse`
3. Navigate to the following directory:
`<MDM Hub distribution directory>/<operating system name>/mrmcleanse`
4. To start the Process Server installer on a cluster node, run the command for your operating system:

UNIX. `./hub_cleanse_install.bin`

Windows. `hub_cleanse_install.exe`

The Process Server installation wizard starts.



5. Follow the online instructions. When prompted, enter the installation values that you collected.
6. **Next step:** After the installation completes, deploy the Process Server manually on all the nodes that have the installation.
Note: If you performed an automatic deployment for the primary node, you do not need to manually deploy on the primary node.

CHAPTER 8

Process Server Post-Installation Tasks

This chapter includes the following topics:

- [Copy the Installation Log Files, 79](#)
- [Verify the Version and Build Number, 80](#)
- [Deploy the Process Server Application \(Conditional\), 80](#)
- [Enabling Secured Communications for Process Servers, 82](#)
- [Install and Configure Elasticsearch, 83](#)
- [Configure Match Population, 83](#)
- [Configuring the Process Server with Cleanse Engines, 85](#)

Copy the Installation Log Files

The installation log files are useful for troubleshooting the Process Server installation process. Copy the log files to the installation documentation directory. Informatica Global Customer Support might request copies of the log files if you contact them regarding installation issues.

The following table describes the different types of installation log files:

Log File Type	Description
Installation log	<ul style="list-style-type: none">- File name. Informatica_MDM_Cleanse_Match_Server_Install_<timestamp>.xml- Location. <MDM Hub installation directory>/hub/cleanse/UninstallerData/Logs- Contents. Directories created, names of the files installed and commands run, and status for each installed file.
Installation prerequisites log	<ul style="list-style-type: none">- File name. installPrereq.log- Location. <MDM Hub installation directory>/hub/cleanse/Logs- Contents. Logs of prerequisite checks performed by the installer.
Debug log	<ul style="list-style-type: none">- File name. infamdm_installer_debug.txt- Location. <MDM Hub installation directory>/hub/cleanse/- Contents. Detailed information about the choices that are made during installation and the actions performed by the installer.

Log File Type	Description
Post-installation setup log	<ul style="list-style-type: none"> - File name. <code>postInstallSetup.log</code> - Location. <code><MDM Hub installation directory>/hub/cleanse/logs</code> - Contents. Summary of actions performed by the installer during the post-installation process and the errors in the post-installation process.
Process Server log	<ul style="list-style-type: none"> - File name. <code>cmxserver.log</code> - Location. <code><MDM Hub installation directory>/hub/cleanse/logs</code> - Contents. Summary of the Process Server operations.
JBoss log	<ul style="list-style-type: none"> - File name. <code>server.log</code> - Location. <code><JBoss installation directory>/standalone/log</code> - Contents. Contains JBoss event logs and error messages.

Verify the Version and Build Number

Ensure that the correct version and build number of the Process Server is installed.

1. Open a command prompt, and navigate to the following directory: `<MDM Hub installation directory>/hub/cleanse/bin`
2. To verify the Process Server version and build number, run the following command:

On UNIX. `versionInfo.sh`

On Windows. `versionInfo.bat`

Note: For AIX systems, change the `versionInfo.sh` script to run Java from the `<Java home>/jre/bin` directory.

Deploy the Process Server Application (Conditional)

If you have a scenario that requires deployment of the Process Server application, deploy the Process Server application.

You need to deploy the Process Server application in any of the following scenarios:

- The installation is in an application server multi-node environment or cluster environment.
- The installation completes, but the `postInstallSetup` script that you run during the installation fails.
- You skipped the `postInstallSetup` script during the installation.

Perform the following steps to deploy the Process Server application:

1. If the Process Server is not installed on the same application server instance as the Hub Server, create data sources.
2. Deploy the Process Server application `siperian-mrm-cleanse.ear`.

Step 1. Creating Data Sources (Conditional)

If the Process Server is not deployed on the same application server instance as the Hub Server, configure the data sources for the application server.

To configure the application server to create data sources for the Process Server, perform the following tasks:

1. Copy the `<datasources>` definition for the MDM Hub Master Database and each Operational Reference Store from the `standalone-full.xml` file on the Hub Server machine to the `standalone-full.xml` file on the Process Server machine.

The `standalone-full.xml` file is in the following location:

```
<JBoss installation directory>/standalone/configuration
```

2. On the Process Server machine, add the following directory structure under `<JBoss installation directory>\modules`:

```
com\informatica\mdm\jdbc\main
```

3. On the Hub Server machine, copy the following files from `<JBoss installation directory>\modules`:

- `module.xml`
- Supported version of the JDBC drivers

4. On the Process Server machine, paste the copied files to the following directory: `<JBoss installation directory>\modules\com\informatica\mdm\jdbc\main`.

Step 2. Deploying the Process Server Application (Conditional)

If the installation is in an application server multi-node environment or cluster environment, or the `postInstallSetup` script was skipped or fails, deploy the Process Server application.

Deploy the Process Server application on the same machine on which you installed the Process Server. The Process Server application must be able to find the Process Server installation associated with it. Therefore, do not copy the application EAR file for deployment on another machine. For example, you install the Process Server on a test machine, and then deploy the application on the production machine. The application that you deploy on the production machine cannot find the installation on the test machine.

Deploy the Process Server application by using one of the following procedures:

Using a script for deployment

You run the `postInstallSetup` script to deploy the Process Server application.

Manual deployment

You manually deploy the Process Server application.

Using a Script for Deploying the Process Server Application (Conditional)

You can run the `PostInstallSetup` script to deploy the Process Server application.

Important: If the installation is in an application server multi-node or a cluster environment, first deploy the Process Server application on one node, and then deploy the Process Server application on the other nodes. Ensure that you deploy the Process Server application on the same machine on which you installed the Process Server.

1. Open a command prompt, and change to the following directory:

```
<MDM Hub installation directory>/hub/cleanse
```

2. Run the `PostInstallSetup` script.
On UNIX. `./postInstallSetup.sh`
On Windows. `postInstallSetup.bat`

Manually Deploying the Process Server Application (Conditional)

You can manually deploy the Process Server application. You must deploy the Process Server application from the Process Server installation directory.

Important: If the installation is in an application server multi-node or a cluster environment, first deploy the Process Server application on one node, and then deploy the Process Server application on the other nodes. Ensure that you deploy the Process Server application on the same machine on which you installed the Process Server.

1. Stop the JBoss application server.
2. If you have an existing deployment, delete the `siperian-mrm-cleanse.ear` deployment file from the following JBoss deployment directory:

```
<JBoss installation directory>\standalone\deployments
```
3. Copy the `siperian-mrm-cleanse.ear` deployment file from the Process Server installation directory to the JBoss deployment directory.
4. Start the JBoss application server.

For more information about deploying applications, see the JBoss documentation.

Enabling Secured Communications for Process Servers

Each Process Server requires a signed certificate. Use the Hub Console to enable the HTTPS protocol and specify a secure port for each Process Server.

1. Create signed certificates for the Process Servers in the certificate store.
2. Ensure that the application server can access the certificate store.
3. Log in to the Hub Console.
4. Select an Operational Reference Store database.
5. Acquire a write lock.
6. In the **Utilities** workbench, select **Process Server**.
7. Select a Process Server and click the **Edit Process Server** icon.
The Add/Edit Process Server dialog box opens.
8. Verify that the **Port** is a secure port.
9. Select the **Enable Secured Connection (HTTPS)** check box.

Process Server Information	
Server	
Port	8443
Enable Cleanse Operations	<input checked="" type="checkbox"/>
Threads for Cleanse Operations	2
Cleanse Mode	Online and Batch
Enable Match Processing	<input checked="" type="checkbox"/>
Match Mode	Online and Batch
Offline	<input type="checkbox"/>
Enable Batch Processing	<input checked="" type="checkbox"/>
Threads for Batch Processing	20
CPU Rating	1.0
Enable Search Processing	<input checked="" type="checkbox"/>
Enable Secured Connection (HTTPS)	<input checked="" type="checkbox"/>

10. Click **OK**.
11. Verify other Process Servers that appear in the list.

Install and Configure Elasticsearch

To use search, install and setup Elasticsearch for the MDM Hub.

For more information about installing and configuring search, see the "Search with Elasticsearch" chapter in the *Multidomain MDM Configuration Guide*.

Configure Match Population

The match population contains the standard population set to use for the match process. Each supported country, language, or population has a standard population set. You must enable the match population to use for the match rules.

The match population is available as a *population.ysp* file with the Informatica MDM Hub installation. The population name is the same as the ysp file name. If you add a Japanese population, and want to use the Person_Name_Kanji match field, add _Kanji to the population name. For example, Japan_Kanji or Japan_i_Kanji. If you do this, the standard Person_Name match field is not available.

The population that you use must be compatible with the SSA-Name3 version of the MDM Hub. If you need additional population files or if you need an updated population file to upgrade to a later version, contact

Informatica Global Customer Support. The first population file that you request with the product is free. You might need population files for other countries or you might need an updated population file to upgrade to a later version of the MDM Hub.

Enabling Match Population

You must enable the match population to use for the match rules.

1. Copy the `<population>.yxp` files to the following location:

On UNIX. `<infamdm_install_directory>/hub/cleanse/resources/match`

On Windows. `<infamdm_install_directory>\hub\cleanse\resources\match`

2. In the C_REPOS_SSA_POPULATION metadata table, verify that the population is registered.

The seed database for the MDM Hub installation has some populations registered in the C_REPOS_SSA_POPULATION table, but not enabled.

3. If the C_REPOS_SSA_POPULATION table does not contain the population, add it to the table and enable it.

The population name is the same as the yxp file name. For example, if the yxp file name is `US.yxp`, the population name is `US`.

To add the population to an Operational Reference Store, use the following steps:

- a. Connect to the Operational Reference Store schema that you want to add the population to.
- b. In SQL*Plus, run the `add_std_ssa_population.sql` script in the following directory:

On UNIX. `<infamdm_install_directory>/server/resources/database/custom_scripts/oracle`

On Windows. `<infamdm_install_directory>\server\resources\database\custom_scripts\oracle`

- c. Answer the prompts described in the following table:

Prompt	Description
Enter the population to add	Name of the population.
Enter a value for ROWID_SSA_POP (example: INFA.0001) DEFAULT [INFA.0001]	Unique value for the ROWID_SSA_POP column of the C_REPOS_SSA_POPULATION metadata table. Default is INFA.0001

The population is registered in the C_REPOS_SSA_POPULATION table.

- d. Run the following command to enable the population:

```
UPDATE c_repos_ssa_population SET enabled_ind = 1 WHERE population_name = '<Your
Population> ';
COMMIT;
```

4. Restart the Process Server after you enable populations.
5. Log in to the Hub Console to verify that the population is enabled.

The population appears in the **Match/Merge Setup** user interface for base objects.

Configuring the Process Server with Cleanse Engines

After you install the Process Server, you can configure a cleanse engine with the Process Server.

For more information about cleanse engine configuration, see the *Multidomain MDM Cleanse Adapter Guide*.

CHAPTER 9

ActiveVOS Post-Installation Tasks for the Application Server

This chapter includes the following topics:

- [Edit the ActiveVOS Security Domain in JBoss, 86](#)
- [Create a Trusted User in JBoss Environments, 86](#)

Edit the ActiveVOS Security Domain in JBoss

Enable container-based authentication in JBoss.

1. Open the `standalone-full.xml` file in the following directory:

```
<JBoss installation directory>/standalone/configuration
```

2. In the `security-domain name="ActiveVOS"` element, replace the `login-module` configuration with the following configuration:

```
<login-module code="RealmUsersRoles" flag="required">
  <module-option name="usersProperties" value="{jboss.server.config.dir}/
application-users.properties"/>
  <module-option name="rolesProperties" value="{jboss.server.config.dir}/
application-roles.properties"/>
  <module-option name="realm" value="ApplicationRealm"/>
  <module-option name="unauthenticatedIdentity" value="anonymous"/>
</login-module>
```

3. If the JBoss application server is running, restart the server.

Create a Trusted User in JBoss Environments

To use the ActiveVOS workflow engine, create a trusted user with the role of `abTrust`, `abServiceConsumer`, and `abTaskClient` in the application server. The trusted user is trusted by MDM Hub and by ActiveVOS. The user facilitates secure communication between the MDM Hub and ActiveVOS.

The trusted user is the same user as the ActiveVOS workflow adapter user in the Hub Console. The name of the trusted user cannot be the same name as the application server administrative user.

1. From the command prompt, run `add-user.bat`.

- In UNIX. `<JBoss install director>/bin/add-user.sh`
- In Windows. `<JBoss install director>\bin\add-user.bat`

2. Answer the prompts that appear.

Note: The prompt displays the default value in brackets. Press **Enter** to use the default value and go to the next prompt.

What type of user do you wish to add? a) Management User or b) Application User

Enter `b` to select Application User.

Realm (ApplicationRealm)

Enter the same realm name that you specified in the `login-module` that you added to the `standalone-full.xml` file.

Username

Enter the user name of the trusted user.

Password

Enter a password that complies with the JBoss password standard.

What roles do you want this user to belong to?

Enter `abTrust,abServiceConsumer,abTaskClient`.

About to add user <username> for realm <realmname>. Is this correct?

To add the user, enter `yes`.

Is this new user going to be used for one AS process to connect to another AS process?

Enter `yes`.

3. Restart the application server.

CHAPTER 10

ActiveVOS Post-Installation Tasks for the Business Entity Adapter

This chapter includes the following topics:

- [ActiveVOS Web Applications, 88](#)
- [Configuring the ActiveVOS URNs for the Business Entity Workflow Adapter, 89](#)
- [Set the ActiveVOS Protocol to HTTPS, 89](#)
- [Configure the Primary Workflow Engine, 90](#)
- [Configure the MDM Identity Services for ActiveVOS, 90](#)
- [Configure Tasks, 91](#)

ActiveVOS Web Applications

When you install the bundled, licensed version of the ActiveVOS Server, you are also licensed to use two ActiveVOS web applications. After you add users to the application server container, you can use these applications.

You use the web applications for different purposes:

ActiveVOS Console

Administrators use the ActiveVOS Console to manage deployed processes, the alerting system, and endpoint locations. You can also configure the engine for performance monitoring and management.

ActiveVOS Central

Business users can use ActiveVOS Central to manage tasks, requests, and reports. However, in general, business users use an Data Director (IDD) application to manage tasks because they can open the entities to review from the Task Manager.

To use ActiveVOS Central, you must add the MDM Hub users to the application server container.

For more information about the web applications, see the Informatica ActiveVOS documentation.

Configuring the ActiveVOS URNs for the Business Entity Workflow Adapter

The ActiveVOS Server has two predefined uniform resource names (URNs) that it uses internally. You need to update the URL in the URN mappings to use the host name and the port number where the ActiveVOS Server runs.

1. Launch the ActiveVOS Console. In a browser, type the following URL, substituting the correct host name and port number:

Encrypted connections. `https://[host]:[port]/activevos`

Non-encrypted connections. `http://[host]:[port]/activevos`

2. In the ActiveVOS Console, on the Home page, click **Administration > Configure Server > URN Mappings**.
3. For the following URNs, update the paths to reflect the host name and port number of the ActiveVOS Server:

URN	URL Path
ae:internal-reporting	Encrypted connections. <code>https://[host]:[port]/activevos/internalreports</code> Non-encrypted connections. <code>http://[host]:[port]/activevos/internalreports</code>
ae:task-inbox	Encrypted connections. <code>https://[host]:[port]/activevos-central/avc</code> Non-encrypted connections. <code>http://[host]:[port]/activevos-central/avc</code>

4. Verify that **urn:mdm:service** is mapped to the host name and port number of the MDM Hub Server:

Encrypted connections. `https://[host]:[port]/cmx/services/BeServices`

Non-encrypted connections. `http://[host]:[port]/cmx/services/BeServices`

Set the ActiveVOS Protocol to HTTPS

To enable secure communication between ActiveVOS and the MDM Hub, set the protocol to HTTPS in the Hub Console Workflow Manager.

You must first configure the application server for HTTPS communications.

1. Start the Hub Console.
2. Acquire a write lock.
3. Click **Workflow Manager** under the Configuration workbench.
4. In the Workflow Manager, click the **Workflow Engines** tab.
5. Select the ActiveVOS workflow engine, and then click the **Edit** button.
6. In the Edit Workflow dialog box, set the protocol to HTTPS.
7. In a WebLogic environment, in the Edit Workflow dialog box, enter the user name and password of the user that belongs to the abAdmin role.

Configure the Primary Workflow Engine

To configure the primary workflow engine, add a workflow engine for ActiveVOS workflows based on business entities. The secondary workflow engine is for existing customers who want to process existing tasks with a deprecated workflow engine.

1. In the Hub Console, click **Workflow Manager** in the Configuration workbench.
2. Acquire a write lock.
3. Select the **Workflow Engines** tab and click the **Add** button.
4. In the **Add Workflow** dialog box, enter the workflow engine properties.

The following table describes the workflow engine properties:

Field	Description
Workflow Engine	The display name of the workflow engine
Adapter Name	Select BE ActiveVOS for the ActiveVOS workflow adapter based on business entities.
Host	The host name of the Informatica ActiveVOS instance.
Port	The port name of the Informatica ActiveVOS instance.
Username	The user name of the trusted user.
Password	The password of the trusted user.
Protocol	The protocol for communication between the MDM Hub and ActiveVOS. The protocol can be http or https.

5. Click **OK**.

Configure the MDM Identity Services for ActiveVOS

If you use embedded ActiveVOS, ensure that you configure ActiveVOS to use MDM Identity Services. To configure the MDM Identity Services for ActiveVOS, use the ActiveVOS Console to set the Identity Services password to the password of the MDM Hub workflow engine user.

1. In the ActiveVOS console, select **Admin > Configure Services > Identity Services**.
2. In the Provider Configuration section, enable the **Enable** check box and select **MDM** from the **Provider Type** list.
3. In the Connection tab, enter the password of the MDM Hub user with the user name `admin`.
Note: If you later change the password for the admin user, you must enter the new password in the ActiveVOS identity services settings.
4. Click **Update**.

5. Test that ActiveVOS can log in to the MDM Hub as the `admin` user, and that ActiveVOS can retrieve a list of roles for the user you specify as the **User for test**.
 - a. Select the **Test** tab.
 - b. In the **User for test** field, enter an MDM Hub user that is assigned to a role.
 - c. Click **Test Settings**.

Note: The test fails if an Operational Reference Store is not configured, the user for test does not belong to a role, or the role name contains spaces.

Configure Tasks

Before you begin using task workflows in Informatica Data Director, configure task templates, task triggers, and task types in the Provisioning tool.

For more information, see the *Multidomain MDM Provisioning Tool Guide*.

CHAPTER 11

Customize ActiveVOS

You can customize the ActiveVOS installation by configuring the ActiveVOS properties in the `build.properties` file. The properties have a default value. You do not need to set them unless the default value does not work in your environment.

The following table describes the ActiveVOS properties that you can configure:

Property	Description
<code>activevos.install.console</code>	Controls if the ActiveVOS console is deployed in the server. Default is true. If set to false, ActiveVOS Console is not installed.
<code>activevos.secure.https.only</code>	Forces and redirects all ActiveVOS HTTP traffic to HTTPS. Default is false

Adding ActiveVOS Properties

To enable the ActiveVOS properties, you must add the properties to the `build.properties` file in hub console and run the post-install script run again for the changes to take place.

1. Open the following `build.properties` directory in a text editor:
`<MDM Hub installation directory>\hub\server\bin\build.properties`
2. Add the ActiveVOS properties to the `build.properties` directory.
3. Open a command prompt.
4. Navigate to the `PostInstallSetup` script in the following directory:
 - On Unix. `<MDM Hub installation directory>/hub/cleanse`
 - On Windows. `<MDM Hub installation directory>\hub\cleanse`
5. Run the `PostInstallSetup` script:
 - On Unix. `postinstallsetup.sh`
 - On Windows. `postinstallsetup.bat`
6. Restart the application server.

CHAPTER 12

Resource Kit Installation

This chapter includes the following topics:

- [Setting Up the MDM Hub Sample Operational Reference Store, 93](#)
- [Registering the Informatica MDM Hub Sample Operational Reference Store, 96](#)
- [Installing the Resource Kit in Graphical Mode, 98](#)
- [Installing the Resource Kit in Console Mode, 100](#)
- [Installing the Resource Kit in Silent Mode, 102](#)

Setting Up the MDM Hub Sample Operational Reference Store

Before you can use the MDM Hub sample Operational Reference Store, you must set it up. Before you install the Resource Kit, set up the MDM Hub sample Operational Reference Store. To set up the MDM Hub sample Operational Reference Store, create an Operational Reference Store and import `mdm_sample` into it.

1. Navigate to the following location in the distribution directory:

On UNIX. `<distribution directory>/database/bin`

On Windows. `<distribution directory>\database\bin`

2. Run the following command:

On UNIX. `./sip_ant.sh create_ors`

On Windows. `sip_ant.bat create_ors`

3. Answer the prompts that appear.

Note: The prompt displays default text in brackets. Press **Enter** to use the default value and go to the next prompt.

Enter database type. (ORACLE, MSSQL, DB2)

Database type. Specify `ORACLE`.

Enter Oracle Connection Type (service, sid). [service]

Connection type. Use one of the following values:

- `SERVICE`. Uses the service name to connect to Oracle.
- `SID`. Uses the Oracle System ID to connect to Oracle.

Default is `SERVICE`.

Enter the Operational Reference Store database host name. [localhost]

Name of the machine that hosts the database. Default is `localhost`.

Enter the Operational Reference Store database port number. [1521]

Port number that the database listener uses. Default is `1521`.

Enter the Operational Reference Store database service name. [orcl]

Name of the Oracle service. This prompt appears if the selected Oracle connection type is `SERVICE`.

Enter the Operational Reference Store database SID. [orcl]

Name of the Oracle system identifier. This prompt appears if the selected Oracle connection type is `SID`.

Enter Oracle Net connect identifier (TNS Name) [orcl]

Oracle TNS name. Default is `orcl`.

Connect URL. [jdbc:oracle:thin:@//<host name>:<port>/<service_name or SID>]

Connect URL for the database connection.

Enter the Operational Reference Store database user name. [cmx_ors]

User name of the MDM Hub sample Operational Reference Store database. Default is `cmx_ors`.

Enter the Operational Reference Store database user password.

Password of the MDM Hub sample Operational Reference Store user.

Enter a locale name from the list: de, en_US, fr, ja, ko, zh_CN. [en_US]

Operating system locale. Default is `en_US`.

Enter the DBA user name. [SYS]

User name of the administrative user. Default is `SYS`.

Enter the DBA password.

Password of the administrative user.

Enter the name of the MDM index tablespace. [CMX_INDX]

Name of the tablespace to contain the index components for the Operational Reference Store.
Default is `CMX_INDX`.

Enter the name of the MDM temporary tablespace. [CMX_TEMP]

Name of the tablespace to contain the temporary components for the Operational Reference Store.
Default is `CMX_TEMP`.

Enter the name of the Oracle temporary tablespace. [TEMP]

Name of the Oracle temporary tablespace. Default is `TEMP`.

4. After you create the sample Operational Reference Store, review `sip_ant.log` in the following directory:

On UNIX. `<distribution directory>/database/bin`

On Windows. `<distribution directory>\database\bin`

The `sip_ant.log` file logs any errors that might occur when you run the `sip_ant` script to create the Operational Reference Store.

5. To import `mdm_sample`, run the following command:

On UNIX. `./sip_ant.sh import_schema`

On Windows. `sip_ant.bat import_schema`

6. Answer the prompts that appear.

Note: The prompt displays default text in brackets. Press **Enter** to use the default value and go to the next prompt.

Enter database type. (ORACLE, MSSQL, DB2)

Database type. Specify `ORACLE`.

Enter Oracle Connection Type (service, sid). [service]

Connection type. Use one of the following values:

- `SERVICE`. Uses the service name to connect to Oracle.
- `SID`. Uses the Oracle System ID to connect to Oracle.

Default is `SERVICE`.

Enter the Operational Reference Store database host name. [localhost]

Name of the machine that hosts the database. Default is `localhost`.

Enter the Operational Reference Store database port number. [1521]

Port number that the database listener uses. Default is `1521`.

Enter the Operational Reference Store database service name. [orcl]

Name of the Oracle service. This prompt appears if the selected Oracle connection type is `SERVICE`.

Enter the Operational Reference Store database SID. [orcl]

Name of the Oracle system identifier. This prompt appears if the selected Oracle connection type is `SID`.

Enter Oracle Net connect identifier (TNS Name) [orcl]

Oracle TNS name. Default is `orcl`.

Connect URL. [jdbc:oracle:thin:@//<host name>:<port>/<service_name or SID>]

Connect URL for the database connection.

Enter the Operational Reference Store database user name. [cmx_ors]

Name of the MDM Hub sample Operational Reference Store database. Default is `cmx_ors`.

Enter the Operational Reference Store database user password.

Name of the MDM Hub sample Operational Reference Store database user.

Enter a locale name from the list: de, en_US, fr, ja, ko, zh_CN. [en_US]

Operating system locale. Default is `en_US`.

Enter the path to the ZIP dump file. [<distribution directory>\resources\database]

Path to the `mdm_sample.zip` file.

Enter the name of the ZIP dump file. [mdm_sample.zip]

Name of the ZIP dump file. Default is `mdm_sample.zip`.

Registering the Informatica MDM Hub Sample Operational Reference Store

After you set up the MDM Hub sample Operational Reference Store, you must register it. Register the MDM Hub sample Operational Reference Store through the Hub Console.

1. Start the Hub Console.
The **Change database** dialog box appears.
2. Select the MDM Hub Master Database, and click **Connect**.
3. Start the **Databases** tool under the Configuration workbench.
4. Click **Write Lock > Acquire Lock**.
5. Click the **Register database** button.

The **Informatica MDM Hub Connection Wizard** appears and prompts you to select the database type.

6. Select the type of database, and click **Next**.
7. Configure connection properties for the database.
 - a. Select an Oracle connection method, and click **Next**.

The following table describes the Oracle connection methods that you can select:

Connection Method	Description
Service	Connect to Oracle by using the service name.
SID	Connect to Oracle by using the Oracle System ID.

The **Connection Properties** page appears.

- b. Specify the connection properties for the connection type that you select, and click **Next**.

The following table lists and describes the connection properties:

Property	Description
Database Display Name	Name for the Operational Reference Store that must appear in the Hub Console.
Machine Identifier	Prefix fixed to keys to uniquely identify records from the Hub Store instance.
Database hostname	IP address or name of the server that hosts the Oracle database.
SID	Oracle System Identifier that refers to the instance of the Oracle database running on the server. The SID field appears if you selected the SID connection type.

Property	Description
Service	Name of the Oracle SERVICE used to connect to the Oracle database. The Service field appears if the you selected the Service connection type.
Port	The TCP port of the Oracle listener running on the Oracle database server. The default is 1521.
Oracle TNS Name	Name of the database on the network as defined in the <code>TNSNAMES.ORA</code> file of the application server. For example: <code>mydatabase.mycompany.com</code> . You set the Oracle TNS name when you install the Oracle database. For more information about the Oracle TNS name, see the Oracle documentation.
Schema Name	Name of the Operational Reference Store. Specify <code>mdm_sample</code> .
Password	Password associated with the user name for the Operational Reference Store. For Oracle, the password is not case sensitive. By default, this is the password that you specify when you create the Operational Reference Store.

The **Summary** page appears.

- c. Review the summary, and specify additional connection properties.

The following table lists additional connection properties that you can configure:

Property	Description
Connection URL	Connect URL. The Connection Wizard generates the connect URL by default. The following list shows the format of the connect URL for the Oracle connection types: Service connection type <code>jdbc:oracle:thin:@//database_host:port/service_name</code> SID connection type <code>jdbc:oracle:thin:@//database_host:port/sid</code> For a service connection type, you have the option to customize and later test a different connection URL.
Create data source after registration	Select to create the data source on the application server after registration. Note: If you do not select the option, you must manually configure the data source.

- d. For a service connection type, if you want to change the default URL, click the **Edit** button, specify the URL, and then click **OK**.
8. Click **Finish**.
The **Registering Database** dialog box appears.
 9. Click **OK**.
The MDM Hub registers the MDM Hub sample Operational Reference Store.

10. Select the MDM Hub sample Operational Reference Store that you registered, and click the **Test database connection** button to test the database settings.

The Test Database dialog box displays the result of the database connection test.

11. Click **OK**.

The Operational Reference Store is registered, and the connection to the database is tested.

Installing the Resource Kit in Graphical Mode

You can install the Resource Kit in graphical mode.

Before you install the Resource Kit, you must have installed and configured the MDM Hub.

1. Start the application server.
2. Open a command prompt and navigate to the Resource Kit installer. By default the installer is in the following directory:

On UNIX. `<distribution directory>/<operating system name>/mrmresourcekit`

On Windows. `<distribution directory>\windows\mrmresourcekit`

3. Run the following command:

On UNIX. `hub_resourcekit_install.bin`

On Windows. `hub_resourcekit_install.exe`

4. Select the language for the installation, and then click **OK**.

The **Introduction** window appears.

5. Click **Next**.

The **License Agreement** window appears.

6. Select the **I accept the terms of the License Agreement** option, and then click **Next**.

The **Installation Feature** window appears.

7. Select the Resource Kit features that you want to install and click **Next**.

You can select the following options:

Sample Schema

Installs the MDM Hub sample schema resources. You must create a sample schema and register it with the Hub Server before you install the sample applications.

Samples and Utilities

Installs the sample applications and utilities.

The list of sample applications that are deployed is stored in the `build.properties` file in the following directory:

`<Resourcekit_Home>\samples`

SIF SDK and Javadocs

Installs the javadocs, libraries, and resources associated with the SIF SDK.

BPM SDK

Installs the resources associated with the BPM SDK.

Jaspersoft

Copies the Jaspersoft installer to the Resource Kit home.

SSA-NAME3

Copies the SSA-NAME3 installer to the Resource Kit home.

A message about the requirement of having created and registered a sample schema with the MDM Hub appears.

8. Click **OK**.

The **Choose Install Folder** window appears.

9. Select the location of the Resource Kit installation.

- To choose the default location, click **Next**.
- To enter a path, type the path to the installation folder, and click **Next**.

Note: The installation fails if you specify a path that has spaces in the directory or folder names.

- To return to the default installation location, click **Restore Default Folder**.
- To choose another location, click **Choose**, and then click **Next**.

On UNIX, the **Choose Link Folder** window appears.

On Windows, the **Choose Shortcut Folder** window appears.

10. On UNIX, choose a link folder or select the option to not create links, and click **Next**. On Windows, select the location to create a product icon or select the option not to create a product icon.

The **Configuration Selection** window appears.

11. Select a configuration option, and click **Next**.

You can select one of the following options:

Configure Samples

Installs and configures the samples.

Source Only

Installs the sources of samples but does not configure the samples.

If you select **Configure samples**, the **Resource Kit App Server** window appears. If you select **Source only**, the **Pre-Installation Summary** window appears.

12. From the **Resource Kit App Server** window, select the application server on which you want to install the Resource Kit, and click **Next**.

The **Application Server Home** window for the application server that you select appears.

13. Configure the application server settings.

- a. Specify the application server installation directory, and then click **Next**.

The **JBoss Application Server Configuration Name** window appears.

- b. Specify the configuration name, and then click **Next**.

The default value is `standalone`.

- c. Specify the remote port.

The **Informatica MDM Hub Server** window appears.

14. Enter the information for the Hub Server installation, and click **Next**.

Enter values in the following fields:

Server Name

Name of the server that hosts the Hub Server.

Server HTTP Port

Port number of the Hub Server.

Informatica MDM Administrative Password

Password to access the MDM Hub.

MDM Hub Home Directory

Directory for the Hub Server installation.

The **Resource Kit ORS ID** window appears.

15. Select a Resource Kit ORS ID from the list, and then click **Next**.

The list contains the Operational Reference Store IDs that you created. Select an Operational Reference Store ID related to the sample schema.

If you have not registered the sample schema, you will not see the Operational Reference Store ID for the sample schema. Register the sample Operational Reference Store, and then restart the installation.

The **Deployment Selection** window appears.

16. Select one of the following options and click **Next**:

Yes, run it during this installation.

Deploys and configures the Resource Kit during the installation.

No, it can be deployed later.

Select this option to deploy and configure manually at a later time.

If you chose to install the Samples and Utilities feature, you must deploy and configure the Resource Kit in this installation step. If you do not deploy the Resource Kit in this step, you cannot make changes and redeploy the samples by using the `postInstallSetup` script provided in the Resource Kit.

If you choose to run the post-installation setup manually, you cannot deploy the EAR file by using the `postInstallSetup` script at a later time. You must manually edit the EAR file and deploy it to make any changes to your installation.

The **Pre-Installation Summary** window appears.

17. Review the Pre-Installation Summary to confirm your installation choices, and then click **Install**.

When the installation completes, the **Install Complete** window appears.

18. Click **Done** to exit the Resource Kit installer.

Installing the Resource Kit in Console Mode

You can install the Resource Kit in console mode.

Ensure that you register the `MDM_SAMPLE` schema before you install the Resource Kit.

1. Start the application server.
2. Navigate to the following directory in the MDM Hub distribution:

On UNIX. `<MDM Hub distribution directory>/<operating system name>/resourcekit`

On Windows. `<MDM Hub distribution directory>/windows/resourcekit`

3. Run the following command from the command prompt:
 On UNIX. `./hub_resourcekit_install.bin -i console`
 On Windows. `hub_resourcekit_install.exe -i console`
4. Enter the number of the locale you want to choose for the installation, and then press **Enter**.
 The introduction information about the installation appears.
5. Press **Enter**.
 The license agreement appears.
6. Read the License Agreement. Type **Y** to accept the terms of the license agreement, or type **N** if you do not want to accept the license agreement and want to exit the installation program.
7. Press **Enter**.
 If you entered **Y** in the preceding step, information about the installation folder appears.
8. Enter the numbers of the Resource Kit features that you want to install separated by commas, and press **Enter**.
 The prompt for the sample schema installation appears.
9. Choose a folder for the Resource Kit installation.
 - To choose the default folder, press **Enter**.
 - To change the path, type the absolute path of the installation folder, and press **Enter**.
10. Confirm the location of the installation folder. Type **OK** to confirm the installation folder or type **Cancel** to change the installation folder.
11. Press **Enter**.
 A list of link location options appears.
12. Enter the number of a link location option.
 The prompt for the link file location appears.
13. Enter the absolute path of the link file, and press **Enter**.
 The source sample configuration options appears.
14. Enter a configuration option, and press **Enter**.

Option	Description
1	Installs and configures the samples
2	Installs the sources of samples but does not configure the samples

If you enter **1**, a list of application server options appears. If you enter **2**, the pre-Installation summary appears.

15. If you entered **1**, enter the number for the application server that you want to select, and press **Enter**.
 The application server information prompts appear.
16. Configure the JBoss settings.
 - a. Specify the application server installation directory, and press **Enter**.
 The information about the JBoss application server configuration name appears.
 - b. Specify the configuration name. The default value is `standalone`.
 - c. Press **Enter**.

- d. Specify the remote port.

Note: If the JBoss port conflicts with the default database port, change one of the ports to resolve the conflict.

The Hub Server information prompts appear.

17. Enter the information for the Hub Server installation, and press **Enter**.

The following table describes the prompts for the Hub Server installation information:

Prompt	Description
Server Name	Name of the server that hosts the Hub Server.
Server HTTP Port	Port number of the Hub Server.
Informatica MDM Administrative password	Password to access the MDM Hub.
MDM Hub Home Directory	Directory for the Hub Server installation.

A list of MDM Hub ORS IDs appears.

18. Enter the Operational Reference Store ID of the MDM sample schema, and press **Enter**.

If you did not register the sample schema, you will not see the Operational Reference Store ID for the sample schema. Register the sample Operational Reference Store, and then restart the installation.

The deployment selection prompt appears.

19. Choose whether you want to run the `postInstallSetup` script as part of the installation, or run it manually later.

20. Press **Enter**.

The summary of the installation choices appears.

21. Verify the information in the pre-installation summary. If the information is correct, press **Enter** to start the installation.

The Resource Kit is installed according to the configuration information you provide. When the process is complete, the installation complete information appears.

22. Press **Enter** to exit the installer.

Installing the Resource Kit in Silent Mode

You can install the Resource Kit without user interaction in silent mode. You might want to perform a silent installation if you need multiple installations, or if you need to install on a machine cluster. A silent installation does not show any progress or failure messages.

Before you run the silent installation for the Resource Kit, you must configure the properties file for the silent installation. The installer reads the file to determine the installation options. The silent installation process might complete successfully even if you provide incorrect settings, such as an incorrect application server path or port. You must ensure that you provide correct settings in the properties file.

Copy the Resource Kit installation files to the hard disk on the machine where you plan to install the Resource Kit. To install in silent mode, complete the following tasks:

1. Configure the installation properties file and specify the installation options in the properties file.
2. Run the installer with the installation properties file.

Configuring the Properties File

Informatica provides a sample properties file that includes the parameters that the installer requires. You can customize the sample properties file to specify the options for the installation. Then run the silent installation.

The silent installer does not validate the settings in the properties files. You must ensure that you specify correct settings and verify them before you run the silent installer.

1. Find the `silentInstallResourceKit_sample.properties` file in the following directory:

On UNIX. `/silent_install/mrmresourcekit`

On Windows. `\silent_install\mrmresourcekit`

After you customize the file, save it. You can rename the file and put it anywhere on the machine.

Note: In the silent properties file, slash and backslash are special characters. You must enter two of each of these characters when you enter information in the file, such as when you enter an installation path. For example, to enter the path to the server directory, you must enter `\\u1\infamdm\hub\resourcekit`.

2. Create a backup copy of the `silentInstallResourceKit_sample.properties` file.
3. Use a text editor to open the file and change the values of the installation parameters.
4. Save the properties file with a new name such as `silentInstallresourcekit.properties`.

The following table describes the installation parameters that you can change:

Property Name	Description
INSTALLER_UI	Specifies the mode of installation. Set to <code>silent</code> .
SIP.INSTALL.TYPE	Specifies the type of installation. Set to <code>SIPERIAN_SAMPLE_INSTALL</code> .
SIP.INSTALL.SAMPLE.SCHEMA	Specifies if you want to install the sample schema. Specify one of the following values: - 0. Does not install the sample schema - 1. Installs the sample schema
SIP.INSTALL.SAMPLES	Specifies if you want to install samples and utilities. Specify one of the following values: - 0. Does not install samples and utilities - 1. Installs samples and utilities
SIP.INSTALL.SIF.SDK	Specifies if you want to install the Services Integration Framework (SIF) SDK. Specify one of the following values: - 0. Does not install the SIF SDK - 1. Installs SIF SDK

Property Name	Description
SIP.INSTALL.BPM.SDK	Specifies if you want to install the BPM SDK. Specify one of the following values: - 0. Does not install the BPM SDK - 1. Installs the SIF SDK
SIP.INSTALL.JASPERSOFT	Specifies if you want to install the Jaspersoft reporting tool. Specify one of the following values: - 0. Does not install the BPM SDK - 1. Installs the SIF SDK
SIP.INSTALL.SSANAME3	Specifies if you want to install SSA-NAME3. Specify one of the following values: - 0. Does not install SSA-NAME3 - 1. Installs SSA-NAME3
USER_INSTALL_DIR	Directory where you want to install the Resource Kit, such as C:\: <code><infamdm_install_directory>\hub\resourcekit.</code>
RUN_CONFIGURE_FLAG	Specifies if you want to configure samples. - 0. Does not configure samples - 1. Installs and configures samples Default is 1. If you set the RUN_CONFIGURE_FLAG property to 1, comment out or set the RUN_CONFIGURE_SETUP property to 0. To configure samples, ensure that the application server and the Hub Server are started and the sample schema is registered in the Hub Console.
RUN_CONFIGURE_SETUP	Specifies if you want to configure only source samples. - 0. Does not install sources of samples - 1. Installs sources of samples If you set the RUN_CONFIGURE_SETUP property to 1, comment out or set the RUN_CONFIGURE_FLAG property to 0. If you set the RUN_CONFIGURE_SETUP property to 1, you cannot configure and deploy samples later.
SIP.AS.CHOICE	Name of the application server. Specify JBoss.
SIP.AS.HOME	The path to the JBoss installation directory.
JBoss.AS.PORT_1	The JBoss port number.
SIP.JBOSS.CONFIGURATION_NAME	The JBoss configuration name. The default value is standalone.
SIP.SERVER.NAME	Name of the server on which the Hub Server is deployed.
SIP.SERVER.HTTP.PORT	Port on which the Hub Server is listening.
SIP.ADMIN.PASSWORD	Password to access the Hub Server.
HUB_SERVER_HOME	Directory for the Hub Server installation.

Property Name	Description
SIP.ORS.ID	Operational Reference Store ID of the MDM Hub sample schema.
RUN_DEPLOYMENT_FLAG	Runs the postInstallSetup script as part of the silent installation. <ul style="list-style-type: none"> - 0. Does not run the postInstallSetup script - 1. Runs the postInstallSetup script

Running the Silent Installer

After you configure the properties file, you can start the silent installation.

1. Ensure that the application server is running.
2. Open a command window.
3. Run the following command:

On UNIX. `./hub_resourcekit_install.bin -f
<location_of_silent_properties_file_for_resourcekit>`

On Windows. `.\hub_resourcekit_install.exe -f
<location_of_silent_properties_file_for_resourcekit>`

The silent installer runs in the background. The process can take a while. Check the `postinstallSetup.log` files to verify that the installation was successful.

The log file is available in the following directory:

On UNIX. `<infamdm_install_directory>/logs/postInstall.log`

On Windows. `<infamdm_install_directory>\logs\postInstall.log`

CHAPTER 13

Troubleshooting the MDM Hub

This chapter includes the following topic:

- [Troubleshooting the Installation Process, 106](#)

Troubleshooting the Installation Process

If the installation fails, use the following information to troubleshoot the failure.

Cannot launch the Hub Console

After installation, the Hub Console fails to launch and generates the following error in the log file:

```
SIP-09131: General Decryption failure and [ERROR] com.delos.util.StringUtil: Unable to decrypt
```

Encrypt and update the MDM Hub Master Database password or Operational Reference Store password.

1. To encrypt a database schema password, run the following command from a command prompt:

```
java -classpath siperian-api.jar;siperian-common.jar;siperian-server.jar  
com.delos.util.PublicKeyBasedEncryptionHelper <plain text password> <Hub Server  
installation directory>
```

The results are echoed to the terminal window.

2. To update your Master Database password or Operational Reference Store password, connect as the `cmx_system` user and run the following statement:

```
UPDATE C_REPOS_DATABASE SET PASSWORD = '<new_password>' WHERE USER_NAME =  
<user_name>;  
COMMIT;
```

3. Run the `postInstallSetup` script.

Hub Server EAR file deployment fails with `concurrent.RejectedExecutionException`

The Hub Server EAR file deployment might fail with the exception

`concurrent.RejectedExecutionException`.

To resolve the issue, increase the length of the task queue in the `standalone-full.xml` file.

The following sample shows the `queue-length count` parameter to modify:

```
<long-running-threads>  
  <core-threads count="50"/>  
  <queue-length count="300"/>  
  <max-threads count="50"/>  
  <keepalive-time time="10" unit="seconds"/>  
</long-running-threads>
```

Cannot start JBoss or launch the Hub Console after installation

After installation, JBoss might not restart after you stop JBoss. When you launch the Hub Console, the Hub Console fails to launch and generates the following error:

```
SIP-09070: Failed to initialize repository layer.
```

To resolve the issue, run the following code in a batch file to restart JBoss:

```
rmdir C:\<JBoss installation directory>\standalone\tmp /s /q
\mkdir C:\<JBoss installation directory>\standalone\tmp
C:\<JBoss installation directory>\bin\standalone.bat -c standalone-full.xml -b 0.0.0.0
```

MDM Hub users cannot login

If you re-create the CMX_SYSTEM schema after installation of the Hub Server, the MDM Hub cannot recognize the hashed passwords. As a result, users cannot log in to the MDM Hub.

To resolve the issue, run the `postInstallSetup` script again manually. This script ensures that the passwords of the MDM Hub users are hashed again and users can log in.

Alternatively, if you do not want to run the `postInstallSetup` script again, run the following commands to migrate the user passwords to hashed passwords and create application users.

On UNIX.

```
cd <MDM Hub installation directory>/server/bin
./sip_ant.sh hash_users_passwords
./sip_ant.sh add_application_users
```

On Windows.

```
cd <MDM Hub installation directory>\server\bin
sip_ant.bat hash_users_passwords
sip_ant.bat add_application_users
```

PostInstallSetUp script fails because the ActiveVOS server deployment times out

When you install the Hub Server, the post-installation setup process might fail after trying to deploy the ActiveVOS server.

To resolve the issue, increase the value of the `deploy.wait.time` property in the `build.properties` file in the following directory:

On UNIX. <infamdm installation directory>/hub/server/bin

On Windows. <infamdm installation directory>\hub\server\bin

Inaccurate start or stop timestamp for Operational Reference Store

When you export an Operational Reference Store that you create, the MDM Hub creates a `.dmp` file. You can reuse the `.dmp` file of the Operational Reference Store to create a second Operational Reference Store. The start date and end date columns in the `C_REPOS_DB_VERSION` table of the Operational Reference Store will contain incorrect start date and end date. You can ignore this error as it does not affect any functionality.

Operational Reference Store registration fails because the connection times out

When you register the Operational Reference Store (ORS) in a JBoss cluster node, the ORS registration fails with a connection timeout error similar to the following:

```
SIP-10313: SIP-09061: Failed connecting with provider url abc03.
java.net.ConnectException: JBAS012144: Could not connect to remote://abc03:9999. The
connection timed out.
```

To resolve the issue, when you register an ORS, disable the JBoss administrative security, and then enable the JBoss administrative security after ORS registration.

Hub Server deployment fails because JBoss composite operation fails

When you deploy the Hub Server in the JBoss application server, the Hub Server deployment fails with the following error:

```
JBAS014653: Composite operation failed and was rolled back. Steps that failed:" =>
{"Operation step-2" => {
  "JBAS014671: Failed services" => {"jboss.web.deployment.default-host./cmx"
=> "org.jboss.msc.service.StartException in service jboss.web.deployment.default-host./
cmx:
  org.jboss.msc.service.StartException in anonymous service: JBAS018040:
Failed to start context
Caused by: org.jboss.msc.service.StartException in anonymous service: JBAS018040: Failed
to start context"
```

To resolve the issue, perform the following steps:

1. Stop the JBoss application server.
2. Use a text editor to open the `standalone.xml` file in the following directory:
On UNIX. `<JBoss Installation Directory>/standalone/configuration`
On Windows. `<JBoss Installation Directory>\standalone\configuration`

3. Find the following code:

```
<subsystem xmlns="urn:jboss:domain:deployment-scanner:1.1">
  <deployment-scanner path="deployments" relative-to="jboss.server.base.dir"
scan-interval="5000"/>
</subsystem>
```

4. Add the `deployment-timeout="300"` attribute as shown in the following sample code:

```
<subsystem xmlns="urn:jboss:domain:deployment-scanner:1.1">
  <deployment-scanner path="deployments" relative-to="jboss.server.base.dir"
scan-interval="5000" deployment-timeout="300"/>
</subsystem>
```

5. Save changes, and start the JBoss application server.
The default deployment timeout value is 60, which is changed to 300.
6. Deploy the Hub Server.

The Hub Server cannot connect to the `cmx_system` schema

To verify that the Hub Server cannot connect to the `cmx_system` schema, review the application server log.

For example, you might find the following error, which confirms that the database is not accessible:

```
Caused by: java.sql.SQLException: ORA-28000: the account is locked
DSRA0010E: SQL State = 99999, Error Code = 28,000
```

To resolve the issue, resolve the database connection issue. Use the application server console to test the connection to the database. If you cannot resolve the connection to the `cmx_system` schema, re-create the `cmx_system` schema.

Failed to verify the need to tokenize records

When you run the match process, you might receive the following error:

```
SIP-16062: Failed to verify the need to tokenize records.
```

Verify the following environment variable settings:

- The library path environment variable must contain the following path:

On UNIX. `<infamdm_install_directory>/hub/cleanse/lib`

On Windows. `<infamdm_install_directory>\hub\cleanse\lib`

The library path environment variable depends on the operating system:

- AIX. `LIBPATH`
- Suse or RedHat Linux. `LD_LIBRARY_PATH`
- Windows. `PATH`

- The `SSAPR` environment variable must include the following path for all users:

On UNIX. `<infamdm_install_directory>/server_install_dir/cleanse/resources`

On Windows. `<infamdm_install_directory>\server_install_dir\cleanse\resources`

major.minor version errors when loading the Process Server

If you see multiple `major.minor` console errors when you try to load the Process Server, check that the system has the correct Java version installed.

Java XAException

When you restart JBoss after you install the Hub Server, the following exception might be generated:

```
javax.transaction.xa.XAException
```

You can ignore the exception.

Informatica Address Verification exception during certification

Informatica Address Verification generates an exception during certification. Ensure that the stack size for the JVM is sufficient.

1. Navigate to the `bin` directory under the JBoss root directory.
2. Open the following file in a text editor.
On UNIX. `run.sh`
On Windows. `run.bat`
3. Set the `JAVA_OPTS` variable as follows:

```
JAVA_OPTS=${JAVA_OPTS} -Xss2000k
```
4. Save and close the file.

Operational Reference Store does not have a workflow engine configured

If you install the MDM Hub and then import an Operational Reference Store (ORS) from a previous version, you see a fatal error that indicates that the ORS does not have a workflow engine configured. This error occurs because the Siperian BPM workflow engine is not registered by default. Use the Workflow Manager to register the Siperian BPM workflow engine with the name that the ORS expects to find.

After you deploy the Process Server .ear files, an error occurs

On a Linux environment with WebSphere 8.5.5.9, after you deploy the Process Server, the following error occurs:

```
Too many open files. Unable to start cleanse ear.
```

Increase the value of the `ulimit` parameter in Linux, and deploy the Process Server.

CHAPTER 14

Uninstallation

This chapter includes the following topics:

- [Uninstallation Overview, 110](#)
- [Uninstalling the Hub Store, 110](#)
- [Uninstalling the Process Server in Graphical Mode, 111](#)
- [Uninstalling the Hub Server in Graphical Mode, 112](#)
- [Uninstalling the Resource Kit in Graphical Mode, 112](#)
- [Uninstalling the Process Server in Console Mode, 113](#)
- [Uninstalling the Hub Server in Console Mode, 113](#)
- [Uninstalling the Resource Kit in Console Mode, 114](#)
- [Manually Undeploying the Process Server, 114](#)
- [Manually Undeploying the Hub Server, 114](#)

Uninstallation Overview

To uninstall the MDM Hub, you need to remove the Process Server, the Hub Server, and the Hub Store from the MDM Hub implementation.

Use the following steps to uninstall the MDM Hub:

1. Uninstall the Hub Store.
2. Uninstall the Process Server.
3. Uninstall the Hub Server.

Uninstalling the Hub Store

You can uninstall the Hub Store by dropping the Hub Store schemas and removing the user logins for the Hub Store schemas. Before you drop the Hub Store schemas, use the Hub Console to unregister the Hub Store schemas.

You must have administrator privileges to drop the Hub Store schemas.

1. Start the Hub Console.

2. Click the **Databases** tool under the **Configuration** workbench.
The **Database Information** page appears.
3. Click **Write Lock > Acquire Lock**.
4. From the list of databases, select the Operational Reference Store to unregister.
5. Click the **Unregister database** button.
The Databases tool prompts you to confirm unregistering the Operational Reference Store.
6. Click **Yes**.
7. Use SQL*Plus to connect to the Oracle instance.
8. Use the following command for each Hub Store schema to drop the schema:


```
drop user <user name> cascade;
```

 If you drop the schemas with the `cascade` option, the associated schemas are dropped.

Uninstalling the Process Server in Graphical Mode

You can uninstall the Process Server in graphical mode.

Uninstalling the Process Server in Graphical Mode On UNIX

To uninstall the MDM Hub, you must remove the Process Server. You must perform the steps to uninstall the Process Server for each Process Server in the MDM Hub implementation.

1. Stop the application server.
2. Navigate to the following directory:


```
<infamdm_install_directory>/hub/cleanse/UninstallerData
```
3. Run the uninstaller.


```
./"Uninstall Informatica MDM Hub Cleanse Match Server"
```
4. Click **Uninstall**.
When the uninstallation process is complete, the Uninstall Complete window appears.
5. Click **Done**.

Uninstalling the Process Server in Graphical Mode On Windows

To uninstall the MDM Hub, you must remove the Process Server. You must perform the steps to uninstall the Process Server for each Process Server in the MDM Hub implementation.

1. Stop the application server.
2. Click **Start** and then click **Programs > Infamdm > Hub > Cleanse > Uninstaller Data > Uninstall Informatica MDM Hub Cleanse Match Server**.
The Uninstall introduction window appears.
3. Click **Uninstall**.
When the uninstallation process is complete, the Uninstall Complete window appears.
4. Click **Done**.

Uninstalling the Hub Server in Graphical Mode

You can uninstall the Hub Server in graphical mode.

Uninstalling the Hub Server in Graphical Mode on UNIX

To uninstall the MDM Hub, you must remove the Hub Server from the MDM Hub implementation.

1. Ensure that you stop the application server.
2. Navigate to the following directory:

```
<infamdm_install_directory>/hub/server/UninstallerData
```

3. Run the uninstaller.

```
./"Uninstall Informatica MDM Hub Server"
```

The Uninstall introduction window appears.

4. Click **Uninstall**.

When the uninstallation process is complete, the Uninstall Complete window appears.

5. Click **Done**.

Uninstalling the Hub Server in Graphical Mode on Windows

To uninstall the MDM Hub, you must remove the Hub Server from the MDM Hub implementation.

1. Ensure that you stop the application server.
2. Click **Start** and then click **Programs > Infamdm > Hub > Server > UninstallerData > Uninstall Informatica MDM Hub Server**.

The Uninstall introduction window appears.

3. Click **Uninstall**.

When the uninstallation process is complete, the Uninstall Complete window appears.

4. Click **Done**.

Uninstalling the Resource Kit in Graphical Mode

You can uninstall the Resource Kit in graphical mode.

Uninstalling the Resource Kit in Graphical Mode on UNIX

To uninstall the Resource Kit, you must remove the Resource Kit from the MDM Hub implementation.

1. Stop the application server.
2. Navigate to the following directory:

```
<infamdm_install_directory>/hub/resourcekit/UninstallerData
```

3. Run the following command:

```
./"Uninstall Informatica MDM Hub Resource Kit"
```

The **Uninstall Informatica MDM Hub Resource Kit** window appears.

4. Click **Uninstall**.

The **Uninstall Complete** window appears with a list of items that could not be removed.

5. Click **Done**.

6. Manually remove the following directory:

```
<infadm_install_dir>/hub/resourcekit
```

Uninstalling the Resource Kit in Graphical Mode on Windows

To uninstall the Resource Kit, you must remove the Resource Kit from the MDM Hub implementation.

1. Stop the application server.

2. Navigate to the following directory:

```
<ResourceKit_install_dir>\deploy\UninstallerData
```

3. Double-click **Uninstall Informatica MDM Hub Resource Kit.exe**

The **Uninstall Informatica MDM Hub Resource Kit** window appears.

4. Click **Uninstall**.

The **Uninstall Complete** window appears with a list of items that could not be removed.

5. Click **Done**.

6. Manually remove the following directory:

```
<infadm_install_dir>\hub\resourcekit
```

Uninstalling the Process Server in Console Mode

You can uninstall the Process Server in console mode on UNIX. If you installed the Process Server in console mode, uninstall the Process Server in console mode.

1. Go to the following directory:

```
<infadm_install_dir>/hub/cleanse/UninstallerData
```

2. Type the following command to run the uninstaller:

```
./"Uninstall Informatica MDM Hub Cleanse Match Server"
```

Uninstalling the Hub Server in Console Mode

You can uninstall the Hub Server in console mode on UNIX. If you installed the Hub Server in console mode, uninstall the Hub Server in console mode.

1. Go to the following directory:

```
<infadm_install_dir>/hub/server/UninstallerData
```

2. Type the following command to run the uninstaller:

```
./"Uninstall Informatica MDM Hub Server"
```

Uninstalling the Resource Kit in Console Mode

You can uninstall the Resource Kit in console mode. If you installed the Resource Kit in console mode, uninstall the Resource Kit in console mode.

1. Go to the following directory:

On UNIX. `<infamdm_install_dir>/hub/resourcekit/UninstallerData`

On Windows. `<infamdm_install_dir>\hub\resourcekit\UninstallerData`

2. Run the following command from the command prompt:

On UNIX. `"Uninstall Informatica MDM Hub Resource Kit.bin" -i console`

On Windows. `"Uninstall Informatica MDM Hub Resource Kit.exe" -i console`

Manually Undeploying the Process Server

You might need to manually undeploy the Process Server from the JBoss application server.

1. To manually undeploy the Process Server, delete `siperian-mrm-cleanse.ear` from the following directory:

On UNIX. `<JBoss_install_dir>/standalone/deployments`

On Windows. `<JBoss_install_dir>\standalone\deployments`

2. Restart the JBoss application server if the JBoss auto-deploy process does not remove the application. For more information, see the JBoss documentation.

Manually Undeploying the Hub Server

You might need to manually undeploy the Hub Server from the JBoss application server.

1. Remove the following deployment files from the JBoss deployment directory:

Deployment File Name	Description
<code>siperian-mrm.ear</code>	Required. The Hub Server application.
<code>entity360view-ear.ear</code>	Optional. The Entity 360 framework.

The deployment files are in the following directory:

On UNIX.

- `<JBoss installation directory>/<configuration name>/deployments`

On Windows.

- `<JBoss installation directory>\<configuration name>\deployments`

2. Restart the JBoss application server if the JBoss auto-deploy process does not remove the application.
For more information, see the JBoss documentation.

INDEX

A

ActiveVOS

URN, setting [89](#)

ActiveVOS Console administrative user

abAdmin role [25](#)

creating [25](#)

C

configuring JBoss

for the MDM Hub [20](#)

configuring Oracle

disable the Oracle Recycle Bin [15](#)

for the MDM Hub [15](#)

set the init.ora parameters [15](#)

configuring server properties [23](#)

configuring the full profile [23](#)

D

databases

connection testing [15](#)

target database [63](#)

H

HTTPS

for Process Servers [82](#)

Hub Console

starting [59](#), [63](#)

Hub Console client

build.properties

configuring [50](#)

cluster environment [50](#)

configuring [50](#)

multi-node environment [50](#)

Hub Server

build number [49](#)

deploying on JBoss cluster [47](#)

deployment [52](#)

deployment script [52](#)

install from command line [46](#)

install silently [46](#)

install with wizard [45](#)

installation log files [49](#)

installing [98](#)

manual deployment [52](#), [54](#)

manually deploying [59](#)

manually redeploying [59](#)

postInstallSetup script [53](#)

silent installation [102](#)

uninstalling [113](#), [114](#)

Hub Server (*continued*)

version information [49](#)

Hub Server properties file

configuring [27](#)

Hub Store

tablespaces, creating [15](#)

uninstalling [110](#)

I

Infinispan

configuring [61](#), [62](#)

Informatica ActiveVOS

creating the schema [18](#)

installer

workflow [39](#), [72](#)

installing

Hub Server

command line [46](#)

silently [46](#)

wizard [45](#)

Process Server

command line [76](#)

silently [77](#)

wizard [75](#)

Resource Kit [98](#), [100](#)

J

JBoss

settings [51](#)

starting on JBoss cluster nodes [26](#)

starting on standalone JBoss instances [26](#)

JBoss cluster

deploying Hub Server [47](#)

deploying Process Server [77](#)

JBoss security

enabling [68](#)

JBossstarting on cluster nodes

starting on standalone instances [26](#)

JMS message queues

configuring [56](#), [59](#)

L

log file

debug log file [49](#), [79](#)

Hub Server log file [49](#)

installation log file [49](#), [79](#)

installation prerequisites log file [49](#), [79](#)

JBoss log file [49](#), [79](#)

post install setup log file [49](#), [79](#)

Process Server log file [79](#)

M

- Master Database
 - creating [29](#)
 - importing metadata [32](#)
- match population
 - enabling [83, 84](#)
- MDM Hub
 - components [9](#)
 - designing the installation [11](#)
 - installation tasks [11](#)
 - installation topology [11](#)
 - introduction [9](#)
 - Java Development Kit (JDK) requirement [13](#)
 - setting environment variables [13](#)
 - setting operating system locale [13](#)
 - system requirements [13](#)

O

- Operational Reference Store
 - creating [31](#)
 - importing metadata [34](#)
 - registering [64](#)

P

- postinstallsetup script
 - running [81](#)
- postInstallSetup script
 - for Hub Server [53](#)
 - for Process Server [81](#)
 - running [53](#)
- Process Server
 - build number [80](#)
 - create data sources [80](#)
 - deploying [81, 82](#)
 - deploying on JBoss cluster [77](#)
 - deployment [80, 81](#)
 - deployment script [80, 81](#)
 - install from command line [76](#)
 - install silently [77](#)
 - install with wizard [75](#)
 - installation log files [79](#)
 - manual deployment [80, 81](#)
 - postInstallSetup script [81](#)
 - uninstalling [113](#)
 - version information [80](#)
- Process Server properties file
 - configuring [28](#)

- Process Servers
 - HTTPS, enabling [82](#)

R

- remoting-connector security
 - enabling [68](#)
- Resource Kit
 - installing [98, 100](#)
 - silent properties file [103](#)
 - uninstalling [113](#)

S

- Sample Schema
 - installing [93](#)
 - registering [96](#)
- secure communications
 - enabling, in the Process Server [82](#)

T

- tablespaces
 - creating [15](#)
- target database
 - selecting [63](#)
- TLS
 - configure [25](#)
- tns name
 - adding [15](#)
- troubleshooting
 - post-installation process [106](#)

U

- uninstalling
 - Hub Server [113, 114](#)
 - Hub Store [110](#)
 - Process Server [113](#)
- URN
 - setting ActiveVOS [89](#)

W

- workflow engines
 - adding [90](#)