

Using SequeLink to Access Data

Abstract

If PowerExchange® does not provide access for your database, you might be able to use the DataDirect SequeLink Client and Server with the SequeLink ODBC drivers to access the data, depending on the database type. With the SequeLink ODBC drivers, you can access data on a Windows machine from a UNIX or Linux machine that runs PowerCenter® services.

Supported Versions

- PowerCenter 10.x
- PowerExchange 10.x

Table of Contents

Overview.	2
How SequeLink Communicates with PowerCenter.	3
Configuring SequeLink to Access Data.	4
Step 1. Download the SequeLink Software.	4
Step 2. Create an ODBC Data Source.	4
Step 3. Install the SequeLink Server for ODBC Socket.	4
Step 4. Start SequeLink ODBC Socket Services.	9
Step 5. Configure the SequeLink ODBC Socket Server.	9
Step 6. Configure the SequeLink ODBC Client.	11
Step 7. Configure a PowerCenter Connection Object.	13

Overview

PowerExchange provides access to most popular types of enterprise data sources and targets. If you need PowerCenter sessions to access data on sources or targets for which PowerExchange does not provide access, you might be able to use the DataDirect SequeLink Client and Server with the SequeLink ODBC drivers for data access.

SequeLink provides ODBC drivers for databases such as Microsoft Access, FileMaker, Progress, FoxPro, and dBase. For a list of databases that SequeLink supports, see the [DataDirect SequeLink Support Matrix](#).

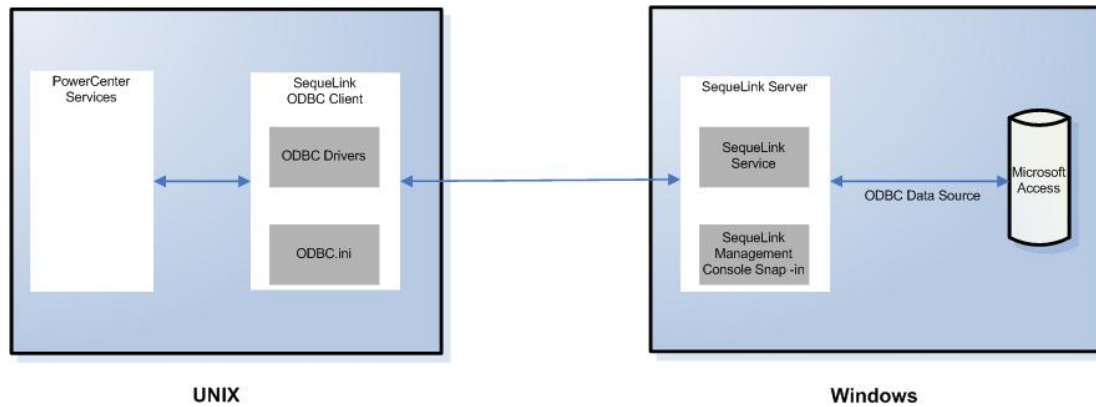
Important: Informatica does not support ODBC as a substitute for PowerExchange. PowerExchange provides better performance and has unique capabilities, such as change data capture (CDC) and pushdown optimization, that the ODBC drivers cannot exploit. Also, Informatica might not be able to certify all ODBC drivers prior to each release. For more information, see the support statement about ODBC drivers with Informatica products, which is available from the [Informatica Network](#).

PowerCenter customers can download and use the SequeLink Client and SequeLink Server for ODBC Socket at no cost. The SequeLink ODBC drivers that Informatica provides can only be used with PowerCenter. With SequeLink, you can use a Windows ODBC driver to access data on a Windows 32-bit machine from a Linux, UNIX, or Windows 64-bit machine that runs PowerCenter services.

To use SequeLink, install the SequeLink Client on the machine where the PowerCenter Integration Service runs and install the SequeLink Server for ODBC socket on the machine where the data is stored. The SequeLink Server for ODBC Socket includes the SequeLink Service and SequeLink Management Console Snap-in. Use the SequeLink Management Console Snap-in to manage the SequeLink Service. The SequeLink Client includes the ODBC drivers, driver manager, and odbci.ini.

How SequeLink Communicates with PowerCenter

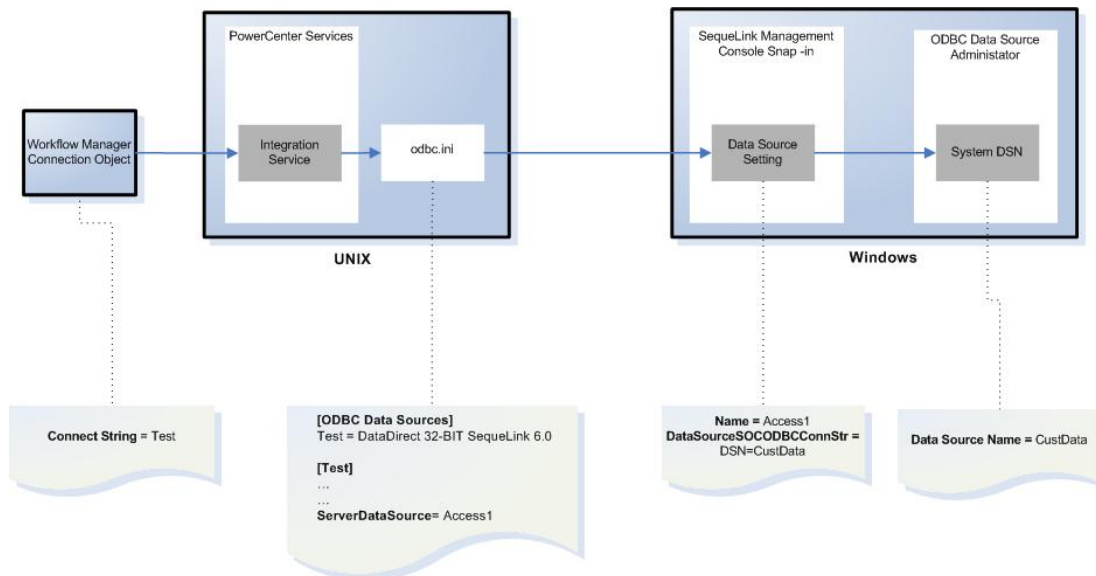
The following figure provides an overview of how SequeLink communicates with PowerCenter:



In the example above, PowerCenter uses SequeLink software to read data from a Microsoft Access database. The SequeLink Client components on the UNIX machine connect to the SequeLink Server on the Windows machine to access the Microsoft Access database.

The data source names provide connectivity to the data that you want to access. You specify data source names when you configure the connection object, SequeLink server data source, odbc.ini, and the System DSN.

The following figure shows the relationship between the data source names:



You configure a data source name in the following places:

- **System DSN in the ODBC Data Source Administrator.** When you create an ODBC data source, you specify an ODBC data source name. You specify this name in the DataSourceSOCODBCConnStr attribute of the SequeLink server data source. In the figure above, the data source name is CustData.
- **Data source in the SequeLink Management Console Snap-in.** When you configure a SequeLink server data source, the DataSourceSOCODBCConnStr must contain the string with DSN=<data source name>. The DSN value must match the data source name of the System DSN. In the figure above, the SequeLink server data source is Access1 and the DataSourceSOCODBCConnStr attribute contains the string DSN=CustData.

- **ODBC data source in odbc.ini.** When you configure odbc.ini, you specify a name for the ODBC Data Source. The data source name must match the connect string you provided in the connection object. If you have multiple SequeLink server data sources, the ServerDataSource value in odbc.ini must match the SequeLink server data source name in the SequeLink Management Console Snap-in. In the figure above, the ODBC Data Source is Test and the ServerDataSource is Access1.
- **Connect string in the connection object.** When you create the ODBC Connection object in the Workflow Manager, you specify a connect string. The connect string should contain the ODBC data source name that you configure in odbc.ini. In the figure above, the connect string is Test.

Configuring SequeLink to Access Data

To use SequeLink to connect to a database on a Windows 32-bit machine, verify that your environment meets the following requirements:

- The PowerCenter license has the ODBC connectivity option.
- The required database drivers are installed on the Windows 32-bit machine. You need the driver to create an ODBC data source.
- The Windows and UNIX machines meet the SequeLink prerequisites. For more information about DataDirect SequeLink prerequisites, see the DataDirect SequeLink documentation.

Complete the following steps to access data using SequeLink:

1. Download the SequeLink server software.
2. Create an ODBC data source.
3. Install the SequeLink Server for ODBC Socket.
4. Start the SequeLink Service.
5. Configure the SequeLink ODBC Socket Server.
6. Configure the SequeLink ODBC Client.
7. Configure a PowerCenter connection object.

Step 1. Download the SequeLink Software

To get the SequeLink software contact Informatica Global Customer Support. The SequeLink software is free to Informatica customers.

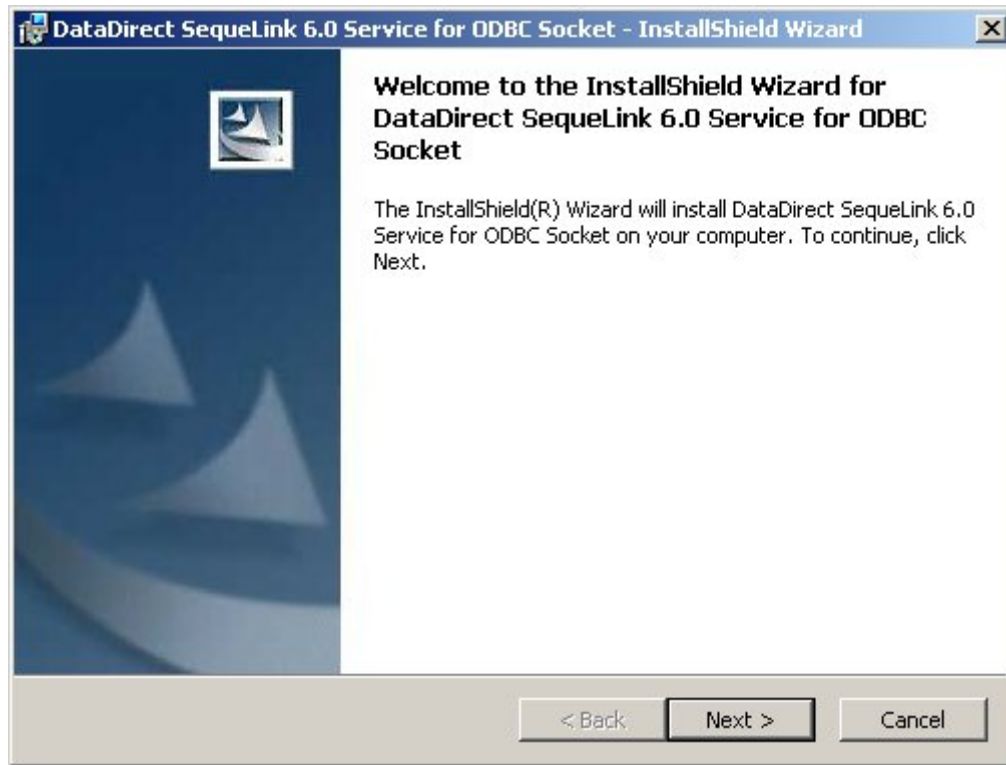
Step 2. Create an ODBC Data Source

Create the data source using the ODBC Data Source Administrator. The driver for the data source must be installed. When you create a data source, you provide a data source name that SequeLink uses to connect to the data.

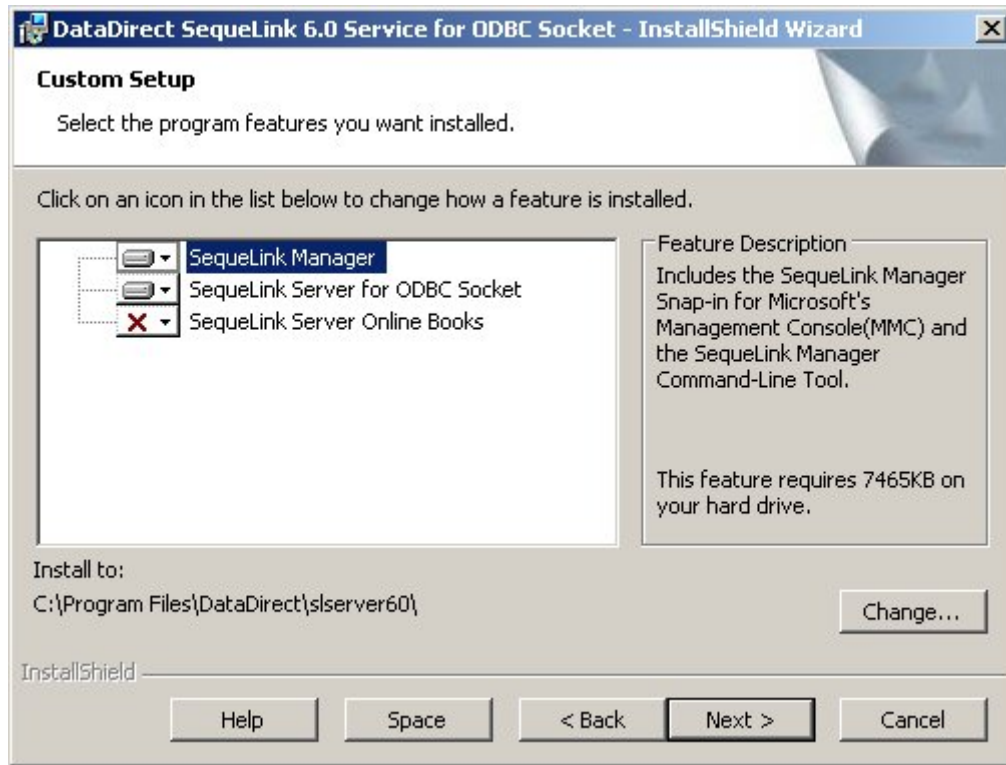
Step 3. Install the SequeLink Server for ODBC Socket

1. Extract the installation files on the Windows machine where the data is stored.
2. Run the following command from the location which contains the extracted installation files:


```
setup.exe /v"IPE=NO"
```
3. The installation wizard appears. Click Next.



4. Accept the License Agreement. Then, click Next.
5. The Custom Setup screen appears. Select the following options then click Next.
 - SequeLink Manager
 - SequeLink Server for ODBC socket

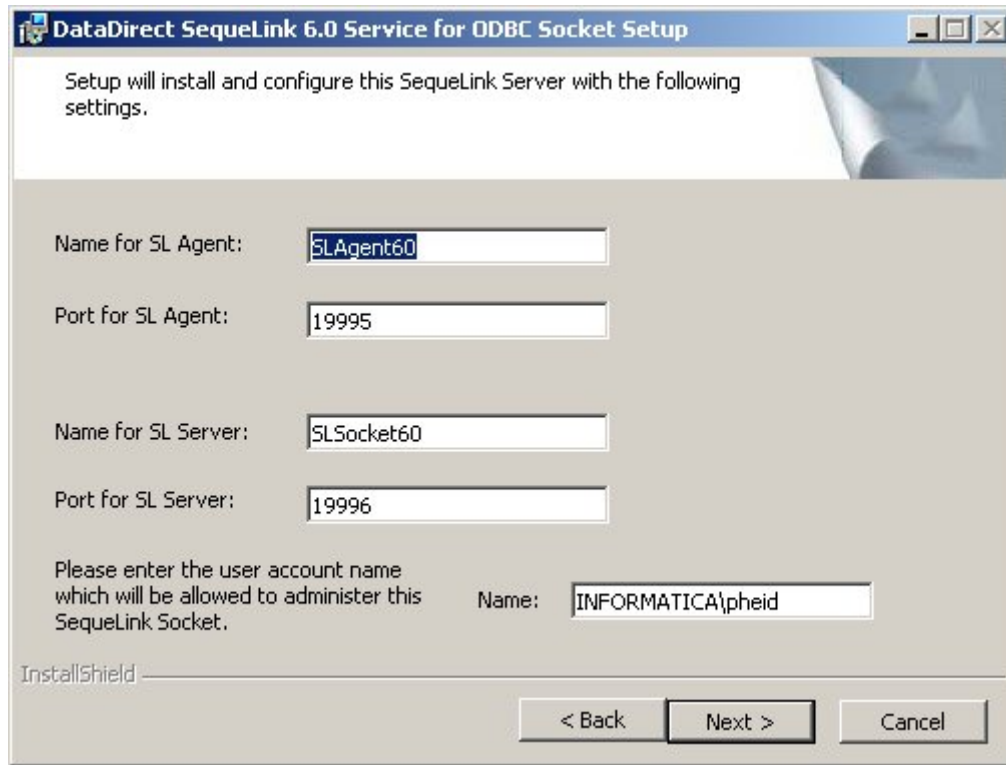


6. Review the values and click Next.

The default SequeLink Agent and SequeLink Server name and port numbers appear.

By default, the user that runs the installer is the user that is configured to administer the SequeLink Socket. The user that administers the SequeLink Socket must have the *Log on as a service* right.

You can update the default values.



7. Configure the ODBC Connection String.

- You can configure the data source name for the ODBC Connection String. Enter DSN=<Data Source Name>. The DSN that you provide will be assigned to the Default SequeLink data source setting. Click Next to continue.

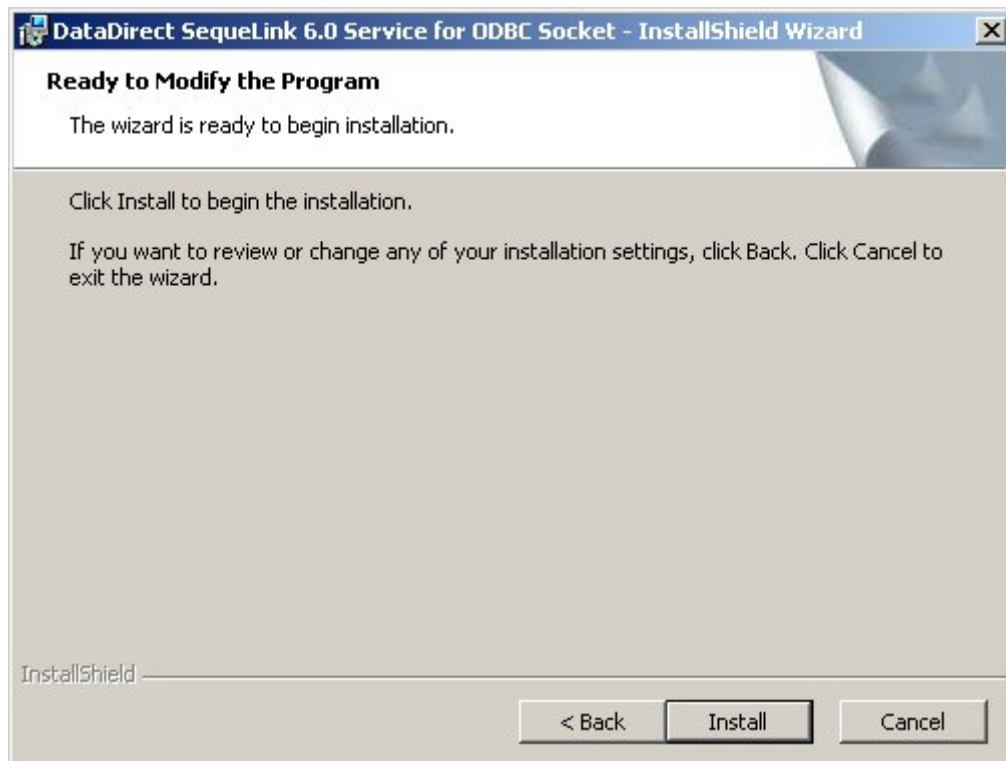
-or-

- You can configure the ODBC connect string with the SequeLink Management Console Snap-in after you install. Click Next to continue.

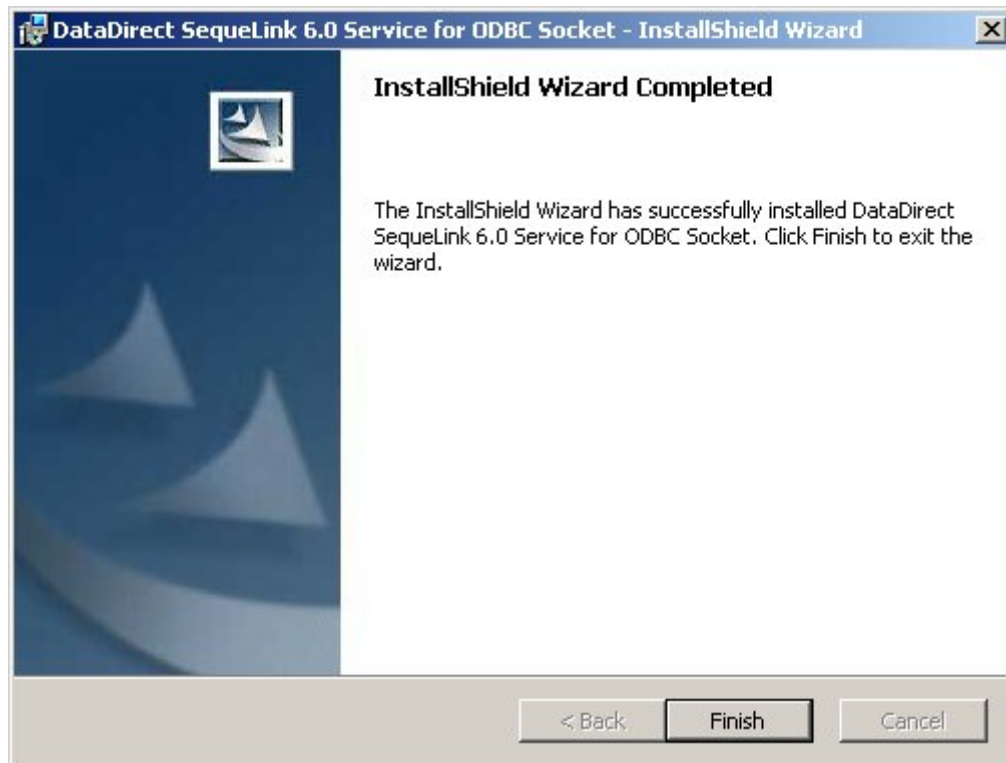


Note: For information about configuring the ODBC Connection String with the SequeLink Management Console Snap-in, see [“Step 5. Configure the SequeLink ODBC Socket Server” on page 9.](#)

8. Click Install.



9. Click Finish.



Step 4. Start SequeLink ODBC Socket Services

1. Click Start > All Programs > DataDirect SequeLink 6.0 Service for ODBC Socket > SequeLink Management Console Snap-in.

The logon to SequeLink Service dialog box appears.



2. Enter the password for the user that administers the SequeLink Service. Then, click OK.

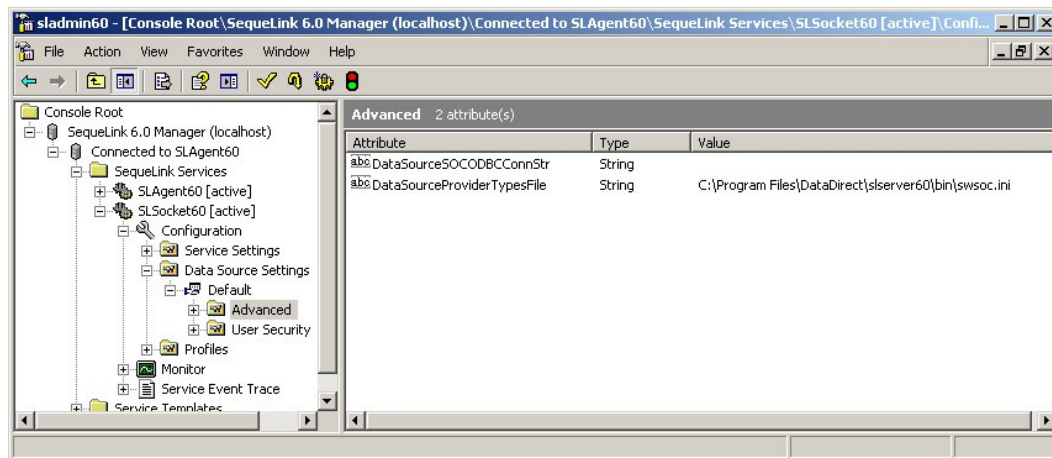
Step 5. Configure the SequeLink ODBC Socket Server

SequeLink Services use the ODBC connection string to connect to the data source. The ODBC connection string is configured within a SequeLink server data source. If you did not configure the ODBC connection string during the

installation, configure the ODBC connection string using the DataSourceSOCODBCConnStr attribute. The installer creates a SequeLink server data source named Default. You can create multiple SequeLink server data sources.

To configure the ODBC connect string for the Default data source setting:

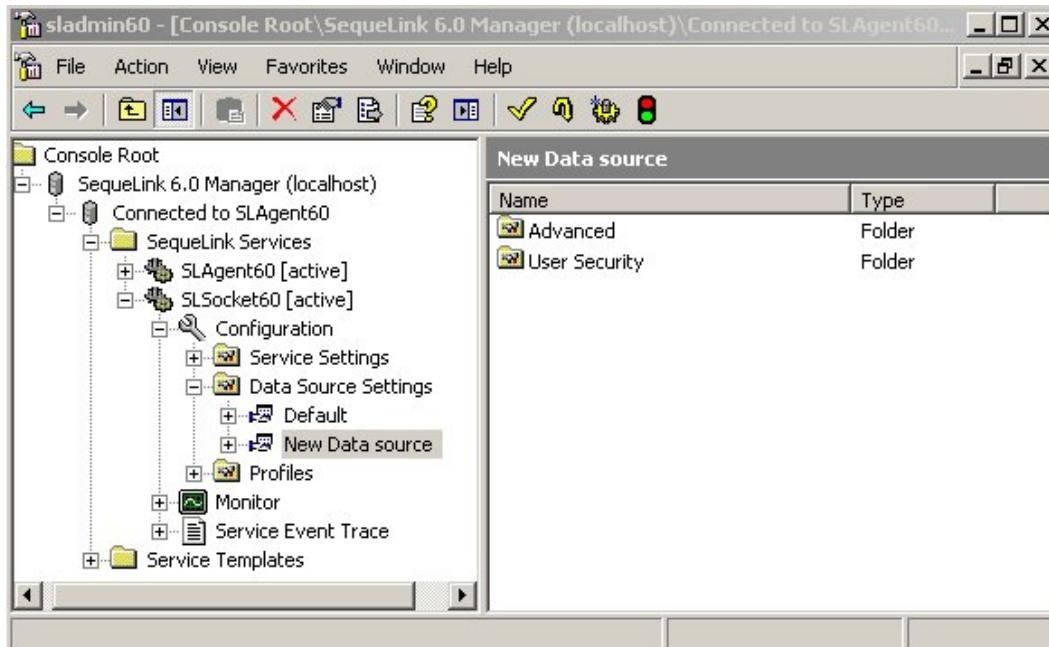
1. In the SequeLink Management Console Snap-in, navigate to the following location:
SequeLink Service > SLSocket60 > Configuration > Data Source Settings > Default > Advanced.



2. Double-click the Value field for the DataSourceSOCODBCConnStr attribute.
3. Set the value to DSN=<ODBC Data Source Name>.
For example, if you created a data source named Access, enter the following value: DSN=Access

To configure the additional SequeLink server data sources:

1. In the SequeLink Management Console Snap-in, navigate to the following location:
SequeLink Service > SLSocket60 > Configuration > Data Source Settings
2. Right-click on Data Source Settings and then select New > Data Source.



3. Enter a name for the data source.
4. If required, update the ODBC Connection String.

The DataSourceSOCODBCConnStr attribute defaults to the DSN value that you configured for the Default data source setting.

To update the ODBC Connection String, select Advanced and double-click the DataSourceSOCODBCConnStr attribute. Set the value to DSN=<Data Source Name>.

For more information about configuring the SequeLink Service, see the DataDirect SequeLink documentation.

Step 6. Configure the SequeLink ODBC Client

To configure the SequeLink ODBC Client, perform the following steps:

1. Set environment variables.
2. Configure odbc.ini.
3. Test the connection to the SequeLink ODBC Socket Server.
4. Restart Informatica Services.

Setting the Environment Variables

Set the following environment variables:

```
setenv SQLNK_ODBC_HOME <Informatica installed directory>/tools/Sequelink/lib64
setenv SHLIB_PATH $$SQLNK_ODBC_HOME/lib64:"$SHLIB_PATH"
setenv ODBCINI $$SQLNK_ODBC_HOME/odbc.ini
```

The PowerCenter installation directory and the SequeLink client directory contain an odbc.ini file. You can choose to configure the odbc.ini that is provided with PowerCenter. Set ODBCINI to the location of the odbc.ini that you want to use.

Note: The name of the lib64 directory can be different for each platform. For example, the lib64 directory may be named lib.

Configuring odbc.ini

PowerCenter uses odbc.ini to connect to the SequeLink data source.

To configure odbc.ini, you need the following information:

- **Data source name.** The data source name that you provided when configuring the connect string for the ODBC connection object in the Workflow Manager.
- **Driver location.** The driver is located in the lib folder of the SequeLink client installation location. The driver name is dwslk22.xx or ivslk22.xx. The file name extension can be different for each platform.
- **Host name and SequeLink Server port number.** Host and port information is available on the SequeLink Socket Server Services folder in the General area of the Service Settings.
- **SequeLink server data source name.** Optional. The name of the SequeLink server data source.

To update odbc.ini, create an entry for the data source under the ODBC Data Sources section and also create an entry for the data source that specifies the connection information.

For example, if the Data Source name is Test and you created a SequeLink data source setting named Access1, create an entry under the ODBC Data Sources section and also create an entry that includes the driver, description, port, host, and server data source name.

```
[ODBC Data Sources]
Test = DataDirect SequeLink 6.0

[Test]
Driver= <Informatica installed directory>/tools/Sequelink/lib64/DWslk22.so
Description=DataDirect SequeLink 6.0
Host=<machine name that runs the SequeLink Service>
Port=<port number of the SequeLink Server>
UseLDAP=0
ServerDataSource=Access1
```

Note: The ServerDataSource is an optional field. If you do not specify the SequeLink server data source name in the ServerDataSource field, the SequeLink Service uses the default SequeLink data source. Configure ServerDataSource when you have multiple SequeLink data sources.

Testing the Connection to the SequeLink ODBC Socket Server

Verify that the SequeLink ODBC client can connect to the SequeLink ODBC Socket Server. Run the example64 program in the SequeLink client directory. For example:

```
<Informatica installed directory>/tools/Sequelink/example/example64
```

Restarting Informatica Services

Use *theinfaservice* command to start and stop Informatica Services. By default, *infaservice* is installed in the server/tomcat/bin directory in the PowerCenter services installation directory.

To start or stop Informatica Services on UNIX:

1. At the command prompt, switch to the directory where *theinfaservice* executable is located.
2. At the command prompt, enter the following command to start or stop the Service Manager:

```
infaservice [startup | shutdown]
```

Note: If you use a soft link to specify the location of *infaservice*, set the INFA_HOME environment variable to the location of the PowerCenter services installation directory.

Step 7. Configure a PowerCenter Connection Object

Create an ODBC relational connection object to provide PowerCenter sessions a connection to the data source.

Enter the following information when you create the connection object:

Field	Description
Username	SequeLink Administrator username. Enter <Domain name>/ <Username>.
Password	SequeLink Administrator password.
Connect String	Name of the ODBC data source entry in odbc.ini.

For more information about creating a connection object, see the PowerCenter documentation.

Author

Informatica Documentation Team