



Informatica® Multidomain MDM  
10.5 HotFix 3

# Installation Guide for IBM Db2 with Red Hat JBoss

Informatica Multidomain MDM Installation Guide for IBM Db2 with Red Hat JBoss  
10.5 HotFix 3  
July 2024

© Copyright Informatica LLC 2001, 2024

This software and documentation are provided only under a separate license agreement containing restrictions on use and disclosure. No part of this document may be reproduced or transmitted in any form, by any means (electronic, photocopying, recording or otherwise) without prior consent of Informatica LLC.

U.S. GOVERNMENT RIGHTS Programs, software, databases, and related documentation and technical data delivered to U.S. Government customers are "commercial computer software" or "commercial technical data" pursuant to the applicable Federal Acquisition Regulation and agency-specific supplemental regulations. As such, the use, duplication, disclosure, modification, and adaptation is subject to the restrictions and license terms set forth in the applicable Government contract, and, to the extent applicable by the terms of the Government contract, the additional rights set forth in FAR 52.227-19, Commercial Computer Software License.

Informatica, the Informatica logo, and ActiveVOS are trademarks or registered trademarks of Informatica LLC in the United States and many jurisdictions throughout the world. A current list of Informatica trademarks is available on the web at <https://www.informatica.com/trademarks.html>. Other company and product names may be trade names or trademarks of their respective owners.

Portions of this software and/or documentation are subject to copyright held by third parties. Required third party notices are included with the product.

The information in this documentation is subject to change without notice. If you find any problems in this documentation, report them to us at [infa\\_documentation@informatica.com](mailto:infa_documentation@informatica.com).

Informatica products are warranted according to the terms and conditions of the agreements under which they are provided. INFORMATICA PROVIDES THE INFORMATION IN THIS DOCUMENT "AS IS" WITHOUT WARRANTY OF ANY KIND, EXPRESS OR IMPLIED, INCLUDING WITHOUT ANY WARRANTIES OF MERCHANTABILITY, FITNESS FOR A PARTICULAR PURPOSE AND ANY WARRANTY OR CONDITION OF NON-INFRINGEMENT.

Publication Date: 2024-07-25

# Table of Contents

<b>Preface</b> .....	<b>7</b>
Informatica Resources. . . . .	7
Informatica Network. . . . .	7
Informatica Knowledge Base. . . . .	7
Informatica Documentation. . . . .	7
Informatica Product Availability Matrices. . . . .	8
Informatica Velocity. . . . .	8
Informatica Marketplace. . . . .	8
Informatica Global Customer Support. . . . .	8
<b>Chapter 1: Installation Overview</b> .....	<b>9</b>
Multidomain MDM Installation. . . . .	9
Installation Topology. . . . .	12
Installation Tasks. . . . .	12
<b>Chapter 2: Pre-Installation Tasks</b> .....	<b>13</b>
Prepare for Installation. . . . .	13
Prepare the Environment. . . . .	14
Set Up the Database Environment. . . . .	15
Step 1. Install and Configure IBM Db2. . . . .	16
Step 2. Create a Database and Tablespaces. . . . .	16
Manually Create a Database and Tablespaces. . . . .	17
Use a Script to Create a Database and Tablespaces. . . . .	19
Step 3. Bind Packages on the Database Server. . . . .	20
Step 4. Create the ActiveVOS Schema. . . . .	21
Set Up the Application Server Environment. . . . .	22
Configure Java Virtual Machines. . . . .	22
Configure Server Properties for the Full Profile. . . . .	26
Configure Transport Layer Security (TLS). . . . .	27
Secure HTTP Response Headers. . . . .	27
Create the ActiveVOS Console Administrative User. . . . .	27
Start JBoss. . . . .	28
Configure the Properties Files for Silent Installation. . . . .	29
Configuring the Hub Server Properties File. . . . .	29
Configuring the Process Server Properties File. . . . .	30
<b>Chapter 3: Hub Store Installation</b> .....	<b>31</b>
Create the MDM Hub Master Database. . . . .	31
Create an Operational Reference Store. . . . .	33
Import the Metadata into the MDM Hub Master Database. . . . .	34

Import the Metadata into the Operational Reference Store. . . . .	35
<b>Chapter 4: Hub Server Installation. . . . .</b>	<b>37</b>
Installing the Hub Server. . . . .	37
Review the Installer Workflow. . . . .	38
Collect the Installation Values. . . . .	39
Install the Hub Server from the Installation Wizard. . . . .	43
Install the Hub Server from the Command Line (UNIX Only). . . . .	44
Install the Hub Server Silently. . . . .	45
Install the Hub Server on Nodes in the Cluster. . . . .	45
<b>Chapter 5: Hub Server Post-Installation Tasks. . . . .</b>	<b>47</b>
Copy the Installation Log Files. . . . .	48
Verify the Version and Build Number. . . . .	48
Install and Configure Elasticsearch. . . . .	49
Configure the Hub Console Client (Conditional). . . . .	49
Configure the MDM Hub Master Database Name. . . . .	49
Verify and Configure Application Server Settings (Conditional). . . . .	50
Editing the Application Server Settings. . . . .	50
Configuring the Hub Server for a JBoss Multi-node or Cluster Environment. . . . .	50
Deploy the Hub Server Applications (Conditional). . . . .	51
Use a Script to Deploy the Hub Server Applications (Conditional). . . . .	52
Manually Deploy the Hub Server Applications (Conditional). . . . .	53
Step 1. Creating Data Sources. . . . .	53
Step 2. Configuring JMS Message Queues. . . . .	55
Step 3. Deploying the Hub Server Applications. . . . .	58
Step 4. Configuring JMS Message Queues on the Hub Server. . . . .	58
Step 5. Configuring Server Resources for Informatica Data Director. . . . .	60
Configure Metadata Caching (Optional). . . . .	61
Editing Infinispan Attributes. . . . .	62
Start the Hub Console. . . . .	62
Register an Operational Reference Store. . . . .	63
Additional Application Server Configuration (Optional). . . . .	65
Configuring JBoss for Standalone Process Server Instances. . . . .	66
Configuring EJB Security. . . . .	66
<b>Chapter 6: Process Server Installation. . . . .</b>	<b>69</b>
Installing the Process Server. . . . .	69
Review the Installer Workflow. . . . .	70
Collect the Installation Values. . . . .	71
Install the Process Server from the Installation Wizard. . . . .	73
Install the Process Server from the Command Line (UNIX Only). . . . .	74
Install the Process Server Silently. . . . .	75

Install the Process Server on Nodes in the Cluster. . . . .	75
<b>Chapter 7: Process Server Post-Installation Tasks. . . . .</b>	<b>77</b>
Copy the Installation Log Files. . . . .	77
Verify the Version and Build Number. . . . .	78
Deploy the Process Server Application (Conditional). . . . .	78
Step 1. Creating Data Sources (Conditional). . . . .	79
Step 2. Deploying the Process Server Application (Conditional). . . . .	79
Enabling Secured Communications for Process Servers. . . . .	80
Install and Configure Elasticsearch. . . . .	81
Configure Match Population. . . . .	81
Enabling Match Population. . . . .	81
Configuring the Process Server with Cleanse Engines. . . . .	81
<b>Chapter 8: ActiveVOS Post-Installation Tasks for the Application Server. . . . .</b>	<b>82</b>
Edit the ActiveVOS Security Domain in JBoss. . . . .	82
Create a Trusted User in JBoss Environments. . . . .	82
<b>Chapter 9: ActiveVOS Post-Installation Tasks for the Business Entity Adapter. . . . .</b>	<b>84</b>
ActiveVOS Web Applications. . . . .	84
Configuring the ActiveVOS URNs for the Business Entity Workflow Adapter. . . . .	85
Set the ActiveVOS Protocol to HTTPS. . . . .	85
Configure the Primary Workflow Engine. . . . .	86
Configure the MDM Identity Services for ActiveVOS. . . . .	86
Configure Tasks. . . . .	87
<b>Chapter 10: Customize ActiveVOS. . . . .</b>	<b>88</b>
Adding ActiveVOS Properties. . . . .	88
<b>Chapter 11: Troubleshooting the MDM Hub. . . . .</b>	<b>89</b>
Troubleshooting the Installation Process. . . . .	89
<b>Chapter 12: Uninstallation. . . . .</b>	<b>95</b>
Uninstallation Overview. . . . .	95
Uninstalling the Hub Store. . . . .	95
Uninstalling the Process Server in Graphical Mode. . . . .	96
Uninstalling the Process Server in Graphical Mode On UNIX. . . . .	96
Uninstalling the Process Server in Graphical Mode On Windows. . . . .	96
Uninstalling the Hub Server in Graphical Mode. . . . .	97
Uninstalling the Hub Server in Graphical Mode on UNIX. . . . .	97
Uninstalling the Hub Server in Graphical Mode on Windows. . . . .	97
Uninstalling the Process Server in Console Mode. . . . .	97

Uninstalling the Hub Server in Console Mode. . . . .	98
Manually Undeploying the Process Server. . . . .	98
Manually Undeploying the Hub Server. . . . .	98
<b>Index. . . . .</b>	<b>99</b>

# Preface

Follow the instructions in the Informatica® *Multidomain MDM Installation Guide* to install and set up Multidomain MDM in the supported database and application server environment of your choice. In addition to the installation tasks, the guide includes pre-installation and post-installation tasks.

## Informatica Resources

Informatica provides you with a range of product resources through the Informatica Network and other online portals. Use the resources to get the most from your Informatica products and solutions and to learn from other Informatica users and subject matter experts.

### Informatica Network

The Informatica Network is the gateway to many resources, including the Informatica Knowledge Base and Informatica Global Customer Support. To enter the Informatica Network, visit <https://network.informatica.com>.

As an Informatica Network member, you have the following options:

- Search the Knowledge Base for product resources.
- View product availability information.
- Create and review your support cases.
- Find your local Informatica User Group Network and collaborate with your peers.

### Informatica Knowledge Base

Use the Informatica Knowledge Base to find product resources such as how-to articles, best practices, video tutorials, and answers to frequently asked questions.

To search the Knowledge Base, visit <https://search.informatica.com>. If you have questions, comments, or ideas about the Knowledge Base, contact the Informatica Knowledge Base team at [KB\\_Feedback@informatica.com](mailto:KB_Feedback@informatica.com).

### Informatica Documentation

Use the Informatica Documentation Portal to explore an extensive library of documentation for current and recent product releases. To explore the Documentation Portal, visit <https://docs.informatica.com>.

If you have questions, comments, or ideas about the product documentation, contact the Informatica Documentation team at [infa\\_documentation@informatica.com](mailto:infa_documentation@informatica.com).

## Informatica Product Availability Matrices

Product Availability Matrices (PAMs) indicate the versions of the operating systems, databases, and types of data sources and targets that a product release supports. You can browse the Informatica PAMs at <https://network.informatica.com/community/informatica-network/product-availability-matrices>.

## Informatica Velocity

Informatica Velocity is a collection of tips and best practices developed by Informatica Professional Services and based on real-world experiences from hundreds of data management projects. Informatica Velocity represents the collective knowledge of Informatica consultants who work with organizations around the world to plan, develop, deploy, and maintain successful data management solutions.

You can find Informatica Velocity resources at <http://velocity.informatica.com>. If you have questions, comments, or ideas about Informatica Velocity, contact Informatica Professional Services at [ips@informatica.com](mailto:ips@informatica.com).

## Informatica Marketplace

The Informatica Marketplace is a forum where you can find solutions that extend and enhance your Informatica implementations. Leverage any of the hundreds of solutions from Informatica developers and partners on the Marketplace to improve your productivity and speed up time to implementation on your projects. You can find the Informatica Marketplace at <https://marketplace.informatica.com>.

## Informatica Global Customer Support

You can contact a Global Support Center by telephone or through the Informatica Network.

To find your local Informatica Global Customer Support telephone number, visit the Informatica website at the following link:

<https://www.informatica.com/services-and-training/customer-success-services/contact-us.html>.

To find online support resources on the Informatica Network, visit <https://network.informatica.com> and select the eSupport option.



# CHAPTER 1

## Installation Overview

This chapter includes the following topics:

- [Multidomain MDM Installation, 9](#)
- [Installation Topology, 12](#)
- [Installation Tasks, 12](#)

## Multidomain MDM Installation

Multidomain MDM is a master data management solution that enhances data reliability and data maintenance procedures. Multidomain MDM is also referred to as the MDM Hub. You can access the MDM Hub features through the Hub Console.

### Installer Packages

You can use the following installers to upgrade to 10.5 HotFix 2 or later:

#### Standard Installer

Use the installer if you have previously used Entity 360 without Informatica Data Director. Standard Installer does not contain `zds-gui.war` packages and does not support Informatica Data Director application.

Complete the following steps to upgrade to 10.5 HotFix 2 or later if you are using or previously used Standard Installer:

1. Roll back.
2. Upgrade with the full installer.

Alternatively, you can complete the following steps to upgrade to 10.5 HotFix 2 or later:

1. Navigate to `<INFA-HOME>/server/conf` and `<INFA-HOME>/cleanse/conf`.
2. Degrade the version number in the `version.info` file. For example, if your version number is `10.5.3.0.0.0.16519774`, you can degrade it to `10.5.3.0.0.0.16519773`.
3. Upgrade with the full installer.

#### Full Installer

Use the installer to upgrade to or opt for a full installation of 10.5 HotFix 2 or later if you have previously used Informatica Data Director.

The full installer contains Informatica Data Director (Deprecated).

The MDM Hub consists of multiple components. You can install the MDM Hub in the graphical mode, the console mode, or the silent mode.

## Core Components

The following table describes the core installation components:

Component	Description
MDM Hub Master Database	<p>A schema that stores and consolidates business data for the MDM Hub. Contains the MDM Hub environment configuration settings, such as user accounts, security configuration, Operational Reference Store registry, and message queue settings. You can access and manage an Operational Reference Store from an MDM Hub Master Database. The default name of an MDM Hub Master Database is CMX_SYSTEM, but you can use a custom name.</p> <p>You can create multiple MDM Hub Master Databases, each with its own set of Operational Reference Stores, in the same database instance.</p>
Operational Reference Store	<p>A schema that stores and consolidates business data for the MDM Hub. Contains the master data, content metadata, and the rules to process and manage the master data. You can configure separate Operational Reference Store databases for different geographies, different organizational departments, and for the development and production environments. You can distribute Operational Reference Store databases across multiple server machines. The default name of an Operational Reference Store is CMX_ORS.</p>
Hub Server	<p>A J2EE application that you deploy on an application server. The Hub Server processes data stored within the MDM Hub and integrates the MDM Hub with external applications. The Hub Server manages core and common services for the MDM Hub.</p>
Process Server	<p>A J2EE application that you deploy on an application server. The Process Server processes batch jobs such as load, recalculate BVT, and revalidate, and performs data cleansing and match operations. The Process Server interfaces with the cleanse engine that you configure to standardize and optimize data for match and consolidation.</p>
Provisioning tool	<p>A tool to build business entity models, and to configure the Entity 360 framework for Data Director. After you build business entity models, you can publish the configuration to the MDM Hub.</p>
Informatica ActiveVOS <sup>®</sup>	<p>A business process management (BPM) tool that is required internally by the MDM Hub for processing data. Informatica ActiveVOS supports automated business processes, including change-approval processes for data. You can also use Informatica ActiveVOS to ensure that changes to master data undergo a review-and-approval process before inclusion in the best version of the truth (BVT) records.</p> <p>When you install ActiveVOS Server as part of the Hub Server installation, you install the ActiveVOS Server, ActiveVOS Console, and Process Central. Also, you install predefined MDM workflows, tasks, and roles.</p>
Data Director (IDD)	<p>A user interface to master and manage the data that is stored in the MDM Hub. In IDD, data is organized by business entities, such as customers, suppliers, and employees. Business entities are data groups that have significance for organizations.</p>

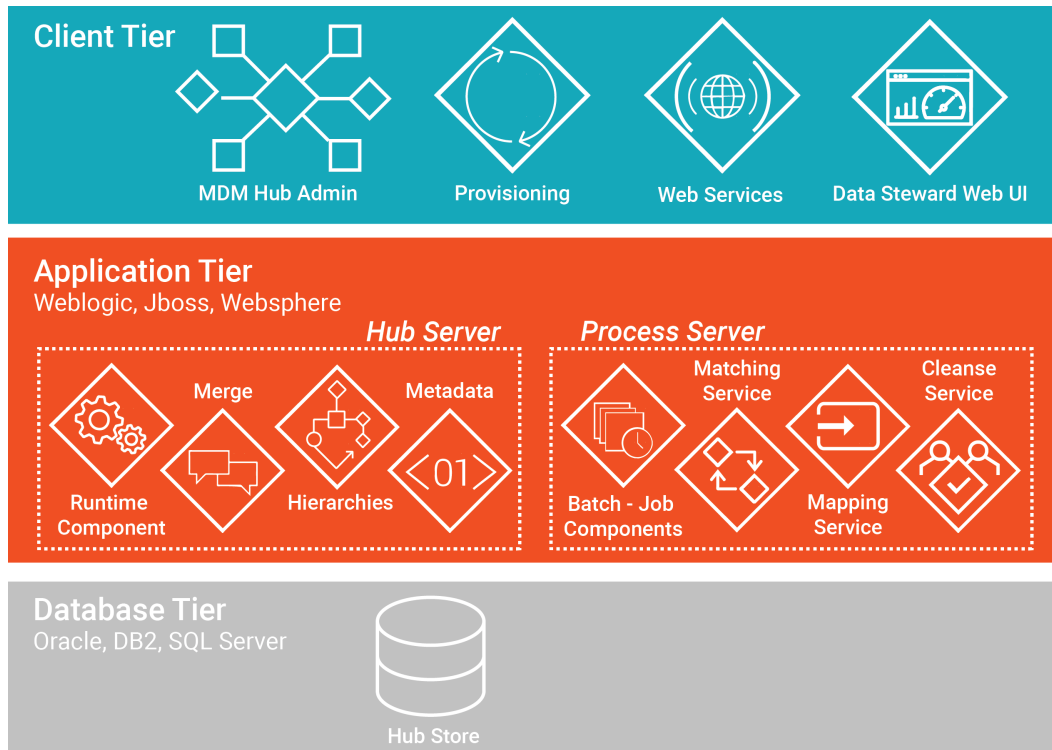
## Optional Components

The following table describes the optional installation components:

Component	Description
Resource Kit	Set of samples, applications, and utilities to integrate the MDM Hub into your applications and workflows. You can select the Resource Kit components that you want to install.
Dynamic Data Masking	A data security tool that operates between the MDM Hub and databases to prevent unauthorized access to sensitive information. Dynamic Data Masking intercepts requests sent to databases and applies data masking rules to the request to mask the data before it is sent back to the MDM Hub.
Informatica Data Controls (IDC)	Applicable to Informatica Data Director (IDD) based on the subject area data model only. IDC is a set of user interface controls that expose the MDM Hub data in third-party applications that are used by business users.
Zero Downtime (ZDT) module	A module to ensure that applications have access to data in the MDM Hub during the MDM Hub upgrade. In a ZDT environment, you duplicate the databases: source databases and target databases. During the MDM Hub upgrade, the ZDT module replicates the data changes in the source databases to the target databases.  To buy the ZDT module, contact your Informatica sales representative. For information about installing a zero downtime environment, see the <i>Multidomain MDM Zero Downtime Installation Guide</i> for the database.

## Multidomain MDM architecture

The following image depicts Multidomain MDM architecture:



# Installation Topology

Before you install the MDM Hub, decide on the installation topology. Usually, infrastructure planners and Master Data Management solution architects determine on the topology to implement.

You can install the MDM Hub in multiple environments, such as development, test, and production. The requirements and priorities for each type of environment are unique. Therefore, the installation topology differs for each environment.

The following table describes the MDM Hub installation topologies that you can use:

Topology	Description
Standalone application server instance	All the MDM Hub components are installed on a standalone application server instance.
Multiple application server instances	The MDM Hub components are installed on multiple application server instances.
Application server cluster	The MDM Hub components are installed in an application server cluster.

For more information about installation topologies, see the *Multidomain MDM Infrastructure Planning Guide*.

**Note:** All the components of the MDM Hub implementation must have the same version. If you have multiple versions of the MDM Hub, install each version in a separate environment.

# Installation Tasks

Complete the preinstallation tasks before you install the MDM Hub components. After the installation, complete the post-installation tasks.

To install the MDM Hub, perform the following tasks:

1. Complete the preinstallation tasks. To ensure that you can successfully run the installers for the Hub Server and the Process Server and create the Hub Store, complete the pre-installation tasks.
2. Create the MDM Hub Master Database. Create the MDM Hub Master Database before you install the Hub Server and the Process Server.  
Use the setup script provided with the MDM Hub distribution to create the MDM Hub Master Database.
3. Create the Operational Reference Store. Create Operational Reference Stores at any time after you complete the preinstallation tasks.  
Use the setup script provided with the MDM Hub distribution to create the Operational Reference Store.
4. Install the Hub Server. Use the MDM Hub installer to install the Hub Server.
5. Install the Process Server. Use the MDM Hub installer to install the Process Server.
6. Perform the post-installation configuration tasks. Test the database connections. To ensure that you can use the MDM Hub features, configure the Hub Server and the Process Server.
7. Optionally, install the Resource Kit. Use the MDM Hub installer to install the Resource Kit.

# CHAPTER 2

## Pre-Installation Tasks

This chapter includes the following topics:

- [Prepare for Installation, 13](#)
- [Prepare the Environment, 14](#)
- [Set Up the Database Environment, 15](#)
- [Set Up the Application Server Environment, 22](#)
- [Configure the Properties Files for Silent Installation, 29](#)

### Prepare for Installation

Before you install the MDM Hub, prepare for the installation.

The following table describes the preparatory tasks for the installation:

Task	Description
Read the Release Notes	Read the latest <i>Multidomain MDM Release Notes</i> for updates to the installation and upgrade process. <b>Important:</b> Some versions of application servers and databases have known limitations when running Multidomain MDM. Ensure that you perform all suggested workarounds.
Read the Product Availability Matrix	Read the Product Availability Matrix (PAM) for information about product requirements and supported platforms. You can access PAMs at <a href="https://network.informatica.com/community/informatica-network/product-availability-matrices">https://network.informatica.com/community/informatica-network/product-availability-matrices</a> .
Understand the MDM infrastructure and architecture plan	Acquire and understand the plan for the MDM infrastructure and architecture from the infrastructure planners or the MDM solution architects in your organization. For more information about infrastructure planning and MDM architecture, see the <i>Multidomain MDM Infrastructure Planning Guide</i> .
Download and extract the installer files	Download the installation files from the Informatica Electronic Software Download site to a directory on your machine. To extract the compressed files, use an extraction utility that also extracts empty folders. Download and extract the following installation files: <ul style="list-style-type: none"><li>- MDM Hub installer for the operating system</li><li>- Database files</li><li>- ActiveVOS Server installer for the operating system</li></ul>

Task	Description
Verify license key	Verify that you have the license key, which is in an email message from Informatica. Copy the license key file to a directory accessible to the user account that installs the product. If you do not have a license key, contact Informatica Global Customer Support.
Create an installation documentation directory	Create a directory to store copies of installation files, such as the validation results, environment reports, database debug logs, and log files. For example, create the directory install_doc. To troubleshoot the installation, you can create an archive file of the installation documentation directory and send it to Informatica Global Customer Support for analysis.

## Prepare the Environment

Before you install the MDM Hub, prepare the installation environment.

The following table describes the tasks you perform to prepare the environment for the installation:

Task	Description
Verify minimum system requirements	Verify that the machines meet the hardware and software requirements for the MDM Hub installation. The hardware requirements are dependent on the data, processing volumes, and business rules. To install the MDM Hub, the machines must meet the following minimum requirements: <ul style="list-style-type: none"> <li>- Disk space. 4.9 GB</li> <li>- RAM for the development environment. 4 GB</li> </ul> To verify the run-time physical memory requirements of the MDM Hub components, use the following formula:  Total run-time memory requirement for MDM Hub components = JDK JVM max heap size of the application server + operating system native heap size
Install Java Development Kit (JDK)	Install a supported version of the JDK on the machine on which you want to install the MDM Hub. The JDK is not bundled with the MDM Hub installers. In a JBoss environment, you must install the version of Azul Zulu JDK that Informatica provides. Contact Informatica Shipping to download Azul Zulu JDK. <b>Note:</b> Use the same Java version on the application server machines and on the machines on which you want to launch the Hub Console.
Install Visual C++ Redistributable for Visual Studio 2015 on Windows only	On Windows systems, Multidomain MDM requires Visual C++ Redistributable for Visual Studio 2015 to support the name search feature and the matching feature.
Set environment variables	Set the environment variables for the MDM Hub installation. To use the correct JDK, set the following environment variables to point to the JDK directory: <ul style="list-style-type: none"> <li>- JAVA_HOME. Required</li> <li>- PATH. Required</li> </ul>

Task	Description
Set the operating system locale	Set the same operating system locale for the Hub Server, the MDM Hub Master Database, Operational Reference Store, and the Hub Console.
Set up the X Window System on UNIX	If you want to run the installer in graphical mode on UNIX, set up an X Window System. An X Window System is a graphics display server. For more information about setting up an X Window System, see the documentation for your operating system.
Disable access to the root welcome page for your application server	To improve security, disable access to the root welcome page for your application server. For instructions, see the documentation for your application server.
Disable insecure TLS cipher suites	To improve security, in the Java runtime environment that is used with Multidomain MDM, disable insecure TLS cipher suites. 1. Open the following file: <code>../jdk&lt;version&gt;/jre/lib/security/java.security</code> 2. Find the property <code>jdk.tls.disabledAlgorithms</code> and update the value to include the following list of insecure cipher suites: <pre>jdk.tls.disabledAlgorithms = SSLv3, RC4, MD5withRSA, DH keySize &lt; 1024, EC keySize &lt; 224, DES40_CBC, RC4_40, 3DES_EDE_CBC, EDH-RSA-DES-CBC3-SHA, ECDHE-RSA-DES-CBC3-SHA, DES-CBC3-SHA</pre> For more information about the property, see the documentation for your JDK.

For more information about product requirements and supported platforms, see the Product Availability Matrix on Informatica Network:

<https://network.informatica.com/community/informatica-network/product-availability-matrices>

## Set Up the Database Environment

Before you create an MDM Hub Master Database and Operational Reference Store, set up the database environment.

To set up the database environment, perform the following tasks:

1. Install and configure IBM Db2.
2. Create a database and tablespaces.
3. Bind packages on the database server.
4. Create the ActiveVOS<sup>®</sup> schema.

## Step 1. Install and Configure IBM Db2

You can install and configure IBM Db2 according to the instructions in the IBM Db2 documentation.

The following table describes the IBM Db2 installation and configuration tasks that you must perform on each machine on which you want an IBM Db2 instance:

Tasks	Description
Install IBM Db2	Install the supported version of IBM Db2.
Install clients and utilities	Install the IBM Db2 client and utilities software to communicate with the MDM Hub and run the MDM Hub processes. On each machine where you want to run the Hub Server or Process Server, install the following software: <ul style="list-style-type: none"><li>- Db2 client</li><li>- Db2 Java utilities for the Db2 client</li></ul> Ensure that you catalog the IBM Db2 database from each Db2 client.
Configure IBM Db2 drivers	To configure IBM Db2 drivers, copy the <code>db2jcc.jar</code> and <code>db2jcc_license_cu.jar</code> driver files from the source to the target directory: Source: <code>&lt;IBM Db2 installation directory&gt;/java</code> Target: <code>&lt;MDM Hub distribution directory&gt;/database/lib</code>
Create the MDM Hub schema users	Create users to access the following MDM Hub schemas: <ul style="list-style-type: none"><li>- MDM Hub Master Databases</li><li>- Operational Reference Stores</li></ul>

## Step 2. Create a Database and Tablespaces

After you install and configure IBM Db2, create and configure databases and tablespaces. You must create a database for each database instance.

**Note:** If you want to create multiple MDM Hub Master Databases, create unique tablespaces for each MDM Hub Master Database.

The following table describes the tablespaces that you require for the MDM Hub schemas:

Tablespace Name	Description
CMX_DATA	Default tablespace for the Operational Reference Store schema. Contains the metadata and user data of the MDM Hub.
CMX_INDX	Tablespace to contain indexes that the MDM Hub creates and uses.
CMX_TEMP	Tablespace to contain temporary tables that the MDM Hub creates and uses.
CMX_REPOS	Tablespace to contain the Operational Reference Store objects.
CMX_USER_TEMP	Temporary tablespace to contain operational temporary tables.
CMX_SYS_TEMP	Temporary tablespace for SQL operations.

Use one of the following procedures to create a database and tablespaces:

- Manually create the database and tablespaces



- Use a script to create the database and tablespaces

## Manually Create a Database and Tablespaces

You can manually create a database and tablespaces. Ensure that you create the database with the compatibility vector turned on and with the UTF-8 TERRITORY US locale.

### Set the Db2 Environment and Db2 Registry Variables

If you create the database manually, set the Db2 environment and Db2 registry variables that the MDM Hub requires.

Use the following commands to set the Db2 environment and Db2 registry variables:

```
db2set DB2CODEPAGE=1208
db2set DB2_COMPATIBILITY_VECTOR=
db2set DB2_DEFERRED_PREPARE_SEMANTICS=YES
db2set DB2_RESTORE_GRANT_ADMIN_AUTHORITIES=ON
db2set DB2_HASH_JOIN=YES
db2set DB2_ANTIJOIN=YES
db2set DB2_INLIST_TO_NLJN=NO
db2set DB2_SELECTIVITY=ALL
db2set DB2_SKIPINSERTED=YES
db2set DB2_SKIPDELETED=YES
db2set DB2_EXTENDED_OPTIMIZATION=ON, ENHANCED_MULTIPLE_DISTINCT, IXOR, SNHD
db2set DB2NTNOCACHE=ON
db2set DB2_REDUCED_OPTIMIZATION=REDUCE_LOCKING
```

### Set the Database Manager Configuration for the Database Instance

You need to optimize the database manager configuration for the database instance.

Use the following commands to optimize the database manager configuration:

```
db2 update dbm cfg using MON_HEAP_SZ AUTOMATIC
db2 update dbm cfg using JAVA_HEAP_SZ 2048
db2 update dbm cfg using AGENT_STACK_SZ 256
db2 update dbm cfg using SHEAPTHRES 0
db2 update dbm cfg using INTRA_PARALLEL YES
```

**Note:** The values specified in the commands are minimum requirements for the MDM Hub.

### Set Database Configuration Parameters

Set the configuration parameters for the database.

Use the following commands to set the database configuration parameters:

```
db2 update db cfg using LOCKLIST AUTOMATIC
db2 update db cfg using MAXLOCKS AUTOMATIC
db2 update db cfg using PCKCACHESZ 128000
db2 update db cfg using DBHEAP AUTOMATIC
db2 update db cfg using CATALOGCACHE_SZ 25000
db2 update db cfg using LOGBUFSZ 4096
db2 update db cfg using UTIL_HEAP_SZ 50000
db2 update db cfg using BUFFPAGE 250
db2 update db cfg using STMHEAP AUTOMATIC
db2 update db cfg using APPLHEAPSZ AUTOMATIC
db2 update db cfg using APPL_MEMORY AUTOMATIC
db2 update db cfg using STAT_HEAP_SZ AUTOMATIC
db2 update db cfg using LOGFILSIZ 128000
db2 update db cfg using LOGPRIMARY 10
db2 update db cfg using LOGSECOND 200
db2 update db cfg using auto_reval deferred_force
```

```

db2 update db cfg using decflt rounding round half_up
db2 update db cfg using SHEAPTHRES_SHR AUTOMATIC
db2 update db cfg using DFT_DEGREE 1

```

**Note:** The values specified in the commands are minimum requirements for the MDM Hub.

## Grant Privileges to SYSIBMADM Modules

You must grant privileges to UTL\_DIR, UTL\_FILE, and DBMS\_SQL SYSIBMADM modules.

Use the following commands to grant privileges to modules:

```

GRANT EXECUTE ON MODULE SYSIBMADM.UTL_DIR TO PUBLIC WITH GRANT OPTION
GRANT EXECUTE ON MODULE SYSIBMADM.UTL_FILE TO PUBLIC WITH GRANT OPTION
GRANT EXECUTE ON MODULE SYSIBMADM.DBMS_SQL TO PUBLIC WITH GRANT OPTION

```

## Define Buffer Pools for the Database Manager

Define the REPOS\_POOL and CMX\_POOL buffer pools.

Use the following commands to define buffer pools:

```

CREATE BUFFERPOOL REPOS_POOL IMMEDIATE SIZE 1500 PAGESIZE 32 K
CREATE BUFFERPOOL CMX_POOL IMMEDIATE SIZE 3000 PAGESIZE 32 K

```

## Create Tablespaces

You need to create tablespaces that the MDM Hub schemas require.

Create the tablespaces in the following sequence:

1. CMX\_DATA
2. CMX\_INDX
3. CMX\_REPOS
4. CMX\_TEMP
5. CMX\_USER\_TEMP
6. CMX\_SYS\_TEMP

Use the following statements to create tablespaces for the MDM Hub schemas:

```

CREATE TABLESPACE CMX_DATA PAGESIZE 32 K
  MANAGED BY DATABASE USING ( FILE '<Db2 storage path>\CMX_DATA\cmx_data01.dat' 500
M )
  EXTENTSIZE 16
  AUTORESIZE YES
  OVERHEAD 10.5
  PREFETCHSIZE 16
  BUFFERPOOL CMX_POOL

CREATE TABLESPACE CMX_INDX PAGESIZE 32 K
  MANAGED BY DATABASE USING ( FILE '<Db2 storage path>\CMX_INDX\cmx_indx01.dat' 500
M )
  EXTENTSIZE 16
  AUTORESIZE YES
  OVERHEAD 10.5
  PREFETCHSIZE 16
  BUFFERPOOL CMX_POOL

CREATE TABLESPACE CMX_REPOS PAGESIZE 32 K
  MANAGED BY DATABASE USING ( FILE '<Db2 storage path>\CMX_REPOS\cmx_repos01.dat' 500
M )
  EXTENTSIZE 16
  AUTORESIZE YES
  OVERHEAD 10.5

```

```

        PREFETCHSIZE 16
        BUFFERPOOL REPOS_POOL

CREATE TABLESPACE CMX_TEMP PAGESIZE 32 K
        MANAGED BY DATABASE USING ( FILE '<Db2 storage path>\CMX_TEMP\cmx_temp01.dat' 500
M )
        EXTENTSIZE 16
        AUTORESIZE YES
        OVERHEAD 10.5
        PREFETCHSIZE 16
        BUFFERPOOL CMX_POOL

CREATE USER TEMPORARY TABLESPACE CMX_USER_TEMP PAGESIZE 32 K
        MANAGED BY DATABASE USING ( FILE '<Db2 storage path>\USER_TEMP\cmx_user_temp01.dat'
500 M )
        EXTENTSIZE 16
        AUTORESIZE YES
        OVERHEAD 10.5
        PREFETCHSIZE 16
        BUFFERPOOL CMX_POOL

CREATE SYSTEM TEMPORARY TABLESPACE CMX_SYS_TEMP PAGESIZE 32 K
        MANAGED BY DATABASE USING ( FILE '<Db2 storage path>\SYSTEM_TEMP\cmx_sys_temp01.dat'
500 M )
        EXTENTSIZE 16
        AUTORESIZE YES
        OVERHEAD 10.5
        PREFETCHSIZE 16
        BUFFERPOOL CMX_POOL

```

Optionally, to create tablespaces with the dropped table recovery feature enabled, add the following clause to the `CREATE TABLESPACE` statement:

```
DROPPED TABLE RECOVERY ON
```

## Use a Script to Create a Database and Tablespaces

The MDM Hub distribution includes a script to create the database and associated tablespaces. To run the script, you need administrative privileges with write and execute permissions to the Db2 data directory.

On UNIX, before you create the database, update the `db2.storage.path` property in the `database.properties` file with the correct database storage path. The `database.properties` file is in the following directory:

```
<MDM Hub distribution directory>/database/bin/db2
```

1. Open a command prompt, and change to the following directory:

```
<MDM Hub distribution directory>/database/bin
```

2. To create the database, run the following command:

On UNIX. `./sip_ant.sh create_db`

On Windows. `sip_ant.bat create_db`

3. Answer the prompts described in the following table:

Prompt	Description
Enter the database type (ORACLE, MSSQL, DB2)	Database type. Specify DB2.
Enter the database instance name [db2]	Name of the database instance. Default is db2.
Enter the database name [SIP97]	Name of the database. Default is SIP97.
Enter the database storage path [C:\DB2DATA]	Path to the directory where the database must be stored. Default is C:\DB2DATA. <b>Note:</b> On UNIX, accept the default value. The database storage path that you specify in the <code>database.properties</code> file will be used.
Enter the DBA user name [DB2ADMIN]	User name of the administrative user. Default is DB2ADMIN.
Enter the DBA password	Password of the administrative user.

The script creates the database and the following tablespaces:

- CMX\_DATA
- CMX\_INDX
- CMX\_TEMP
- CMX\_REPOS
- CMX\_USER\_TEMP
- CMX\_SYS\_TEMP

To verify that the database was created successfully, review the `sip_ant.log` file in the `<MDM Hub distribution directory>/database/bin` directory.

## Step 3. Bind Packages on the Database Server

To ensure that the IBM Db2 client can connect to the database server to run DB2 commands, bind packages on the database server.

1. Open an IBM Db2 command window, and change to the following directory:

```
<IBM Db2 installation directory>/SQLLIB/bnd
```

2. Connect to the database by running the following command:

```
db2 connect to <database name> user <database user> using <database user password>
```

**Note:** The database user must have the bind permission.

3. Run the following bind command:

```
db2 bind @db2cli.lst blocking all grant public sqlerror continue CLIPKG 10
```

The required packages are bound to the database server.

## Step 4. Create the ActiveVOS Schema

To install ActiveVOS, you need to create the ActiveVOS schema. To create the schema, run the `create_bpm` script.

If you want to create multiple MDM Hub Master Databases, create an ActiveVOS schema for each MDM Hub Master Database.

1. Open a command prompt and change to the following directory:

```
<MDM Hub distribution directory>/database/bin
```

2. Run the following command:

On UNIX. `./sip_ant.sh create_bpm`

On Windows. `sip_ant.bat create_bpm`

3. Answer the prompts that appear.

The prompt displays default text in brackets. Press **Enter** to use the default value and go to the next prompt.

**Note:** IBM Db2 data sources are case-sensitive. To avoid issues related to case-sensitivity, Informatica recommends that you use uppercase letters to define names, such as those for schemas, columns, and triggers.

Property	Description
Database Type	Type of database to use. For IBM Db2, specify <code>DB2</code> . The database type must be the same as the database type selected for the MDM Hub Master Database and the Operational Reference Stores.
ActiveVOS Database Host Name	Name of the machine that hosts the database.
ActiveVOS Database TCP/IP Port	Port number that the database listener uses.
ActiveVOS Database Name	Name of the database.
ActiveVOS Database Schema/User Name	User name of the ActiveVOS Server administrative user.
ActiveVOS User Password	Password of the administrative user.
DBA User Name	User name of the database administrative user.
DBA Password	Password of the administrative user.
ActiveVOS Tablespace Name	The name of the tablespace that contains the records that are involved in MDM workflows.

4. After you create the schema, review the `sip_ant.log` file in the following directory:

```
<MDM Hub distribution directory>/database/bin
```

The `sip_ant.log` file logs any errors that might occur when you run the `sip_ant` script to create the ActiveVOS schema.

# Set Up the Application Server Environment

You can install the MDM Hub in a JBoss cluster environment or on standalone JBoss instances. Install and configure JBoss according to the instructions in the JBoss documentation. Whether you install the MDM Hub in a JBoss cluster environment or on standalone JBoss instances, install the JBoss standalone configuration, and use the full profile of the configuration.

A JBoss cluster consists of one or more cluster nodes on one or more machines. Install and configure JBoss on all machines on which you want cluster nodes. In a cluster environment, ensure that the directory structure of the JBoss installations is the same on all the cluster nodes.

**Note:** Install the application server in the same time zone as the database server.

## Configure Java Virtual Machines

To configure a Java Virtual Machine (JVM), set Java options by using the JAVA\_OPTS environment variable.

You can set the Java options in the following file:

On UNIX. <JBoss installation directory>/bin/standalone.conf

On Windows. <JBoss installation directory>\bin\standalone.conf.bat

The following table describes the Java options settings:

Java Options	Description
-server	Results in a slower startup but subsequent operations are faster.
-De360.connection.channel -De360.mdm.host -De360.mdm.port	Application server communication protocol, host, and port. To deploy the MDM Hub applications on a JBoss port other than 4447, set the following Java options: - -De360.connection.channel. Set to the communication protocol that you want to use. Valid values are HTTP and HTTPS. Default is HTTP. - -De360.mdm.host. Set to the IP address of the JBoss host. If the environment uses the HTTPS communication protocol and the security certificate is issued to a Fully Qualified Domain Name (FQDN), set to the FQDN. - -De360.mdm.port. Specifies the listener port where Data Director with business entities communicates with MDM Hub. Default is 8080. If you do not configure these parameters, Data Director screens that are based on the Entity 360 Framework might not work as expected.

Java Options	Description
-Didd.mdm.host -Didd.mdm.port -Didd.protocol	Required for Data Director with subject areas. To deploy Data Director with subject areas, set the following Java options: <ul style="list-style-type: none"> <li>- -Didd.mdm.host. Set to the host name or IP address of the application server host.</li> <li>- -Didd.mdm.port. Required property, used internally by the Data Director with subject areas application during server initialization. Specifies the HTTP or HTTPS listener port used by the JVM for the applications. Default is 8080.</li> <li>- -Didd.protocol. Required property that is used for deploying the subject area application during server initialization. Specifies whether the communication protocol to use is HTTP or HTTPS. Default is HTTP.</li> </ul>
- Dio.undertow.legacy.cookie.ALLOW_HTTP_SEPARATOR S_IN_V0	Mandatory property if you are using JBoss Version 7.3. Set to <code>true</code> to set the property as a system property and prevent REST API authentication failure of a business entity service request that did not contain required credentials due to truncated cookie values. Default is <code>false</code> . You do not need to set this property for JBoss Version 7.1 or 7.2.
-Ddb2.jcc.charsetDecoderEncoder	Required to use the MDM Hub Sample Operational Reference Store. Enables the JDBC driver to return the Unicode replacement character (U+FFFD) in place of a sequence of bytes that is not a UTF-8 string. Set to 3.
-Djava.net.preferIPv4Stack	Specifies whether Java uses Internet Protocol version 4 (IPv4). If the operating system uses Internet Protocol version 6 (IPv6), set the property to <code>true</code> . When set to <code>true</code> , the application communicates only with IPv4 hosts. Default is <code>false</code> .
-Djava.net.preferIPv6Addresses	Specifies whether Java uses Internet Protocol version 6 (IPv6). When a host has both IPv4 and IPv6 addresses and the operating system uses IPv6, use IPv4 for backward compatibility. Set to <code>true</code> for the application to communicate only with IPv6 hosts. Default is <code>false</code> .
-Djavax.net.ssl.trustStore -Djavax.net.ssl.trustStorePassword	Required if you want to use an HTTPS port for the Process Server. The <code>-Djavax.net.ssl.trustStore</code> Java option specifies the path to the truststore file to use for validating client certificates. The <code>-Djavax.net.ssl.trustStorePassword</code> Java option specifies the password to access the truststore file.
-Djava.security.egd	Reduces the startup time of Data Director in Linux environments. Set the value to <code>file:/dev/./urandom</code> .

Java Options	Description
-Djboss.as.management.blocking.timeout	Time in seconds to wait for JBoss to deploy. To ensure that JBoss does not fail to start, you can set the value to 5000. Adjust the time period based on your environment. Default is 300. If you do not configure the parameter, you might encounter a JBoss deployment timeout.
-Djgroups.bind_addr	Interface on which JGroup must receive and send messages. Required in multinode or cluster environments. Ensure that each node binds to its own network interface.
-DFrameworksLogConfigurationPath	Path to the log4j.xml file. Locate the log4j.xml file in the following directories, after they are created: - /hub/cleanse/conf - /hub/server/conf
-Dmdm.node.groupid	Specifies a group ID for Java Virtual Machines in the MDM Hub implementation. Required only if you want logical groupings of Hub Servers and Process Servers.
-DUseESLegacyFqSearch	Specifies whether fielded search returns exact matches from within child nodes for a business entity type. Applicable only when you perform a fielded search on multiple fields. Indicates whether a search must return records that contain search values in the same child node if multiple query fields are at the child level. Set to true to return records that might match the child level query field from different child nodes. Default is false.
-Dfile.encoding -Dorg.apache.catalina.connector.URI_ENCODING	Required if you want to use Informatica Data Director and use REST APIs to search for records. Set both the Java options to UTF-8 to ensure that you can find and save records that contain UTF-8 characters.
- Dorg.apache.coyote.http11.Http11Protocol.MAX_HEADER_SIZE	Maximum size of the HTTP headers, in bytes. The search requests might fail if the header size is low. Set to 16384.
-Dtask.pageSize=<maximum number of tasks>	Specifies the maximum number of ActiveVOS tasks that are retrieved for each request. Default is 5000. Increase the number if your environment has a large number of tasks.
-Dstricttransportsecurity.flag	Specifies whether web browsers must convert all attempts to access Data Director using the HTTP requests to the HTTPS requests instead. Set to true.
-Xms	Initial heap size. Set to 2048m.
-Xmx	Maximum JVM heap size. Set to 6 GB or higher. For example, to set the -Xmx to 6144m, use the following JAVA_OPTIONS environment variable setting: <pre>set "JAVA_OPTIONS=-server ... -Xmx6144m"</pre>



Java Options	Description
-XX:+UseCodeCacheFlushing	Specifies whether the JVM disposes of compiled code when the code cache is full.
-XX:ReservedCodeCacheSize	JIT code cache size. To enhance the performance of the MDM Hub environment, set to 512m.
-XX:MaxMetaspaceSize	Maximum metaspace size. To prevent the JVM from running out of memory, set to 1G.

## Logical Grouping of Java Virtual Machine Example

By grouping Java Virtual Machines (JVMs), you get a logical group of Hub Servers and Process Servers. When you deploy the Hub Server and Process Server applications in a logical JVM group, communication between the Hub Server and Process Server applications stay within the group. To group JVMs, you assign a group ID to each JVM in the MDM Hub environment.

**Note:** Process Server grouping is applicable to the cleanse and match process only. The logical groups are not applied to the internal server cache of the MDM Hub.

The following table shows an example of logical JVM groups:

JVM Group	JVM	Hub Server	Process Server
Group1	JVM1	Yes	Yes
Group1	JVM4	-	Yes
Group2	JVM2	Yes	Yes
Group3	JVM3	-	Yes

For JVM1, add the following Java option in the startup script:

```
-Dmdm.node.groupid=Group1
```

For JVM2, add the following Java option in the startup script:

```
-Dmdm.node.groupid=Group2
```

For JVM3, add the following Java option in the startup script:

```
-Dmdm.node.groupid=Group3
```

For JVM4, add the following Java option in the startup script:

```
-Dmdm.node.groupid=Group1
```

After you configure the JVMs, and deploy the Hub Servers and Process Servers, the groups have the following characteristics:

- Group1 has two Process Servers, Group2 has one Process Server, and Group3 has one Process Server.
- All cleanse and batch calls stay in their own group with the exception of search. For example, any real-time call on the Hub Server in Group1 affects only the Group1 Process Servers (JVM1 and JVM4).

## Configure Server Properties for the Full Profile

Configure the server properties for the full profile of the standalone mode in the `standalone-full.xml` file. The file is in the following directory: `<JBoss installation directory>/standalone/configuration`. To configure the server properties, you can run the commands for the configuration from the JBoss Command Line Interface (CLI).

To use the JBoss CLI, perform the following steps:

1. Navigate to the following directory: `<JBoss installation directory>/bin`.
2. To launch the JBoss CLI, run the following script:  
On UNIX. `jboss-cli.sh`  
On Windows. `jboss-cli.bat`
3. To connect to the server, run the following command:

```
connect
```

For more information about configuring server properties, see the JBoss documentation.

### Transaction Timeout

The transaction timeout property specifies the time in seconds to wait for the MDM Hub transactions to complete. Set the value based on your environment.

#### Command:

```
/subsystem=transactions:write-attribute(name=default-timeout,value=<timeout in seconds>)
```

#### Sample configuration:

```
<subsystem xmlns="urn:jboss:domain:transactions:4.0">
  ...
  <coordinator-environment default-timeout="3600"/>
</subsystem>
```

### Maximum Post Size

The maximum post size property configures the maximum size in bytes of files that you upload. Set the value to the size limit of files that you want to attach in the Data Director application.

Set the value to 20000000 or higher. Default is 10000000.

**Note:** After installing the MDM Hub, set the same value for the Hub Server property `cmx.file.max_file_size_mb` in the `cmxserver.properties` file.

#### Command:

```
/subsystem=undertow/server=default-server/<listener type>=<listener name>/:write-attribute(name=max-post-size,value=<maximum file size in bytes>)
```

#### Sample configuration:

```
<subsystem xmlns="urn:jboss:domain:undertow:4.0">
  ...
  <server name="default-server">
    <http-listener name="default" socket-binding="http" redirect-socket="https"
enable-http2="true" max-post-size="20000000"/>
    <https-listener name="https" socket-binding="https" security-
realm="ApplicationRealm" enable-http2="true" max-post-size="20000000"/>
    ...
  </host>
  </server>
  ...
</subsystem>
```

### Remoting-Connector

The remoting-connector property configures the remoting-connector port and socket binding.

To log in to the Hub Console from a remote machine, set the port to 4447 and the socket binding to remoting.

**Note:** By default, remoting-connector security is disabled. If you want to configure remoting-connector security for the MDM Hub, ensure that you configure only the Elytron security framework that is supported.

**Command:**

```
/socket-binding-group=standard-sockets/socket-binding=remoting:add(port=4447)

/subsystem=remoting/connector=remoting-connector:add(socket-binding=remoting)
```

**Sample configuration for remoting-connector port:**

```
<socket-binding-group name="standard-sockets" default-interface="public" port-offset="{jboss.socket.binding.port-offset:0}">
  ...
  <socket-binding name="remoting" port="4447"/>
  ...
</socket-binding-group>
```

**Sample configuration for remoting-connector socket binding:**

```
<subsystem xmlns="urn:jboss:domain:remoting:4.0">
  ...
  <connector name="remoting-connector" socket-binding="remoting"/>
  ...
</subsystem>
```

## Configure Transport Layer Security (TLS)

**Important:** To ensure secure communication, on the application where you deploy Multidomain MDM, disable TLS 1.0 and enable TLS 1.2.

For information about how to configure TLS, see the documentation for your application server.

## Secure HTTP Response Headers

To secure your application server environment, use secure HTTP response headers. Change or remove headers, such as X-Powered-By and Server.

For information about how to change or remove HTTP response headers, see the documentation for your application server.

## Create the ActiveVOS Console Administrative User

If you want to use ActiveVOS, create the ActiveVOS Console administrative user with the `abAdmin` role. If you do not create an administrative user, the Hub Server deployment fails. Use the ActiveVOS Console administrative user name and password when the Hub Server installer prompts you to enter the administrative user credentials for the ActiveVOS Console.

1. Change to the following directory:

```
<JBoss installation directory>/bin
```

2. To run the `add-user` utility, use the following script:

```
On UNIX. add-user.sh
```

```
On Windows. add-user.bat
```

3. Answer the prompts that appear.

The following table describes the values to specify for each prompt:

Prompt	Value to Specify
What type of user do you wish to add? a) Management User or b) Application User	To select Application User, enter b.
Realm (ApplicationRealm)	Realm name. Enter the realm name that you specified in the <code>login-module</code> that you added to the <code>standalone-full.xml</code> file.
Username	ActiveVOS Console administrator name.
Password	Password that complies with the JBoss password standard.
What roles do you want this user to belong to?	abAdmin.
About to add user <user name> for realm <realm name>. Is this correct?	To add the user, enter <code>yes</code> .
Is this new user going to be used for one AS process to connect to another AS process?	<code>yes</code> .

## Start JBoss

Before you install the Hub Server and the Process Server, start the JBoss application server. Based on your environment, you either start standalone JBoss instances or JBoss cluster nodes.

### Starting Standalone JBoss Instances

If you use standalone JBoss instances, start each instance on which you want to install the MDM Hub components.

1. Navigate to the following directory:

```
<JBoss installation directory>/bin
```

2. To start a JBoss instance, run the following command:

```
On UNIX. standalone.sh -c standalone-full.xml -b 0.0.0.0 -
Djboss.as.management.blocking.timeout=5000
```

```
On Windows. standalone.bat -c standalone-full.xml -b 0.0.0.0 -
Djboss.as.management.blocking.timeout=5000
```

JBoss starts on the available network interfaces and listens for the current host that is defined in the `hosts` file in the `/etc/hosts` directory. Adjust the timeout interval based on your environment.

3. If you have multiple JBoss instances on the same machine, to start the second and any subsequent JBoss instances, add the following argument to the startup command:

```
-Djboss.socket.binding.port-offset=<port offset range such as, 0,100,200,...n>
```

## Starting JBoss Cluster Nodes

If you use a JBoss cluster environment, start the cluster nodes on which you want to install the MDM Hub components.

1. Navigate to the following directory:

```
<JBoss installation directory>/bin
```

2. To start a JBoss cluster node, run the following command on machines that have cluster nodes:

**On UNIX.** `standalone.sh -c standalone-full.xml -b 0.0.0.0 -Djboss.node.name=<Name of the cluster node> -Djboss.server.base.dir=../<node path> -`

`Djboss.as.management.blocking.timeout=5000 -u <multicast address> -`

`Djgroups.bind_addr=<bind address> -Djboss.socket.binding.port-offset=<port offset value>`

`-Djboss.partition.name=<Partition name>`

**On Windows.** `standalone.bat -c standalone-full.xml -b 0.0.0.0 -Djboss.node.name=<Name of the cluster node> -Djboss.server.base.dir=../<node path> -`

`Djboss.as.management.blocking.timeout=5000 -u <multicast address> -`

`Djgroups.bind_addr=<bind address> -Djboss.socket.binding.port-offset=<port offset value>`

`-Djboss.partition.name=<Partition name>`

Set the port offset value if multiple cluster nodes run on the same machine. Use the default partition name or ensure that the partition name is the same for all nodes that belong to a cluster. Adjust the timeout interval based on your environment.

## Configure the Properties Files for Silent Installation

If you want to install the Hub Server and the Process Server without user interaction in silent mode, configure the installation properties files. You might want to perform a silent installation if you need multiple installations, or if you need to install on a machine cluster. A silent installation does not show any progress or failure messages.

The installer reads the silent installation properties file to determine the installation options. Ensure that you provide correct settings in the properties file because the silent installation process might complete successfully even if the settings are incorrect.

You can configure the following silent installation properties files:

- Hub Server. Required to install the Hub Server in silent mode.
- Process Server. Required to install the Process Server in silent mode.

**Note:** If you do not want to manually configure the silent installation properties file, you can use the `-x` command-line option during installation to generate the silent installation properties file.

## Configuring the Hub Server Properties File

If you want to install the Hub Server in silent mode, configure the Hub Server properties file. Specify the options for the installation in the properties file, and save the file with a new name.

1. Find the `silentInstallServer_sample.properties` file in the following directory: `/silent_install/mrmserver`
2. Create a backup copy of the `silentInstallServer_sample.properties` file.

3. Open the file in a text editor, and configure the values of the installation parameters.
4. Save the properties file with a new name such as `silentInstallServer.properties`.

## Configuring the Process Server Properties File

If you want to install the Process Server in silent mode, configure the Hub Server properties file. Specify the options for the installation in the properties file, and save the file with the new name.

1. Find the `silentInstallCleanse_sample.properties` file in the following directory: `/silent_install/mrmcleanse`
2. Create a backup copy of the `silentInstallCleanse_sample.properties` file.
3. Open the file in a text editor, and configure the values of the installation parameters.
4. Save the properties file with a name such as `silentInstallCleanse.properties`.

## CHAPTER 3

# Hub Store Installation

This chapter includes the following topics:

- [Create the MDM Hub Master Database, 31](#)
- [Create an Operational Reference Store, 33](#)
- [Import the Metadata into the MDM Hub Master Database, 34](#)
- [Import the Metadata into the Operational Reference Store, 35](#)

## Create the MDM Hub Master Database

After you install IBM Db2, create an MDM Hub Master Database. If you want to create multiple MDM Hub Master Databases, ensure that you create each MDM Hub Master Database in a different schema. The default name of the MDM Hub Master Database is `CMX_SYSTEM`, but you can use a custom name.

**Note:** If you change the folder names in the distribution directory, metadata import fails.

1. Open a command prompt, and navigate to the following directory:  
`<MDM Hub distribution directory>/database/bin`
2. To create the MDM Hub Master Database, run the following command:  
On UNIX. `./sip_ant.sh create_system`  
On Windows. `sip_ant.bat create_system`
3. Answer the prompts described in the following table:

**Note:** The prompt displays default text in brackets. Press **Enter** to use the default value and go to the next prompt.

Prompts	Description
Enter the database type (ORACLE, MSSQL, DB2)	Database type. Specify <code>DB2</code> . <b>Note:</b> Db2 datasources are case-sensitive. To avoid issues related to case-sensitivity, Informatica recommends that you use uppercase letters to define names, such as the schema names, column names, and triggers.
Enter the database host name [localhost]	Name of the host that runs the database. Default is <code>localhost</code> . <b>Important:</b> In cluster environments, specify the absolute host name or the IP address to avoid caching issues.
Enter the database port number [50000]	Port number that the database listener uses. Default is <code>50000</code> . <b>Note:</b> You cannot create the Db2 database if the port number is not the default 50000. You must manually change the port number in the Db2 properties file.
Enter the database instance name [SIP97]	Name of the database instance. Default is <code>SIP97</code> .
Enter master database name [cmx_system]	Name of the MDM Hub Master Database schema. Default is <code>cmx_system</code> .
Enter master user name [cmx_system]	User name to access the MDM Hub Master Database. Default is <code>cmx_system</code> .
Enter master database user password	Password to access the MDM Hub Master Database.
Enter locale name from the list: de, en_US, fr, ja, ko, zh_CN. [en_US]	Operating system locale. Default is <code>en_US</code> .
Enter the DBA user name [DB2ADMIN]	User name of the administrative user. Default is <code>DB2ADMIN</code> .
Enter the DBA password	Password of the administrative user.

- To verify that the MDM Hub Master Database was created successfully, review `sip_ant.log` in the following directory:

```
<MDM Hub distribution directory>/database/bin
```

The `sip_ant.log` file logs any errors that might occur when you run the `sip_ant` script to create the MDM Hub Master Database.

- If you intend to configure single sign-on authentication for other applications such as Salesforce, increase the BLOB column length. Run the following command on the MDM Hub Master Database:

```
SET SCHEMA CMX_SYSTEM; ALTER TABLE C_REPOS_SAM_PROVIDER_FILE ALTER COLUMN PROVIDER_FILE SET DATA TYPE BLOB (10240000); CALL ADMIN_CMD('REORG TABLE C_REPOS_SAM_PROVIDER_FILE');
```



# Create an Operational Reference Store

After you complete the preinstallation tasks, create an Operational Reference Store (ORS). The default name of the ORS is `CMX_ORS`.

**Note:** If you change the folder names in the distribution directory, metadata import fails.

1. Open a command prompt, and navigate to the following directory:

```
<MDM Hub distribution directory>/database/bin
```

2. To create an ORS, run the following command:

On UNIX. `./sip_ant.sh create_ors`

On Windows. `sip_ant.bat create_ors`

3. Answer the prompts described in the following table:

**Note:** The prompts display default text in brackets. Press **Enter** to use the default value and go to the next prompt.

Prompts	Description
Enter the database type (ORACLE, MSSQL, DB2)	Database type. Specify <code>DB2</code> . <b>Note:</b> Db2 datasources are case-sensitive. To avoid issues related to case-sensitivity, Informatica recommends that you use uppercase letters to define names, such as the schema names, column names, and triggers.
Enter the Operational Reference Store schema host name [localhost]	Name of the host that is running the database. Default is <code>localhost</code> .
Enter the Operational Reference Store schema port number [50000]	Port number that the database listener uses. Default is <code>50000</code> .
Enter the Operational Reference Store database instance name [SIP97]	Name of the database instance. Default is <code>SIP97</code> .
Enter the Operational Reference Store schema name [cmx_ors]	Name of the Operational Reference Store database. Default is <code>cmx_ors</code> .
Enter the Operational Reference Store database user name [cmx_ors]	User name to access the Operational Reference Store. Default is <code>cmx_ors</code> . <b>Note:</b> If you need to specify a user name that is different from the schema name, you must configure the user as a proxy user.
Enter the Operational Reference Store database user password	Password to access the Operational Reference Store.
Enter locale name from the list: de, en_US, fr, ja, ko, zh_CN. [en_US]	Operating system locale.
Enter the DBA user name [DB2ADMIN]	User name of the administrative user. Default is <code>DB2ADMIN</code> .
Enter the DBA password	Password of the administrative user.

- To verify that the ORS was created successfully, review `sip_ant.log` in the following directory:

`<MDM Hub distribution directory>/database/bin`

The `sip_ant.log` file logs any errors that might occur when you run the `sip_ant` script to create the ORS.

## Import the Metadata into the MDM Hub Master Database

After you create the MDM Hub Master Database, import the initial metadata into the MDM Hub Master Database. The initial metadata includes repository tables and other objects that the MDM Hub requires in the Hub Store.

**Note:** If you change the folder names in the distribution directory, metadata import fails.

- Open a command prompt, and navigate to the following directory:

`<MDM Hub distribution directory>/database/bin`

- To import the initial metadata, run the following command:

On UNIX. `./sip_ant.sh import_system`

On Windows. `sip_ant.bat import_system`

- Answer the prompts described in the following table:

**Note:** The prompts display default text in brackets. Press **Enter** to use the default value and go to the next prompt.

Prompts	Description
Enter the database type (ORACLE, MSSQL, DB2)	Database type. Specify DB2.
Enter the database host name [localhost]	Name of the host that is running the database.
Enter the database port number [50000]	Port number that the database listener uses. Default is 50000.
Enter the database instance name [SIP97]	Name of the database. Default is SIP97.
Enter master database name [cmx_system]	Name of the MDM Hub Master Database schema. Default is <code>cmx_system</code> .
Enter master user name [cmx_system]	User name to access the MDM Hub Master Database. Default is <code>cmx_system</code> . <b>Note:</b> On UNIX, ensure that you use a user name with 8 characters or less.
Enter master database user password	Password to access the MDM Hub Master Database.

Prompts	Description
Enter locale name from the list: de, en_US, fr, ja, ko, zh_CN. [en_US]	Operating system locale. Default is en_US.
Connect URL [jdbc:db2://localhost:50000/SIP97:currentSchema=CMX_SYSTEM;]	Connect URL for IBM Db2. Default is jdbc:db2://localhost:50000/SIP97:currentSchema=CMX_SYSTEM.

- After you import the initial metadata, review the following log files for errors:
  - seed.log. Contains database errors.  
The seed.log file is in the following directory: <MDM Hub installation directory>/database/bin/db2
  - sip\_ant.log. Contains user input errors.  
The sip\_ant.log file is in the following directory: <distribution directory>/database/bin

## Import the Metadata into the Operational Reference Store

After you create the Operational Reference Store, import the initial metadata into the Operational Reference Store. The initial metadata includes repository tables and other objects that the MDM Hub requires in the Hub Store.

**Note:** If you change the folder names in the distribution directory, metadata import fails.

- Open a command prompt, and navigate to the following directory:

```
<MDM Hub distribution directory>/database/bin
```

- To import the initial metadata, run the following command:

```
On UNIX. ./sip_ant.sh import_ors
```

```
On Windows. sip_ant.bat import_ors
```

- Answer the prompts described in the following table:

**Note:** The prompts display default text in brackets. Press **Enter** to use the default value and go to the next prompt.

Prompts	Description
Enter the database type (ORACLE, MSSQL, DB2)	Database type. Specify DB2.
Enter the Operational Reference Store database host name [localhost]	Name of the host that is running the database.
Enter the Operational Reference Store database port number [50000]	Port number that the database listener uses. Default is 50000.
Enter the database name [SIP97]	Name of the database. Default is SIP97.

Prompts	Description
Enter the Operational Reference Store database name [cmx_ors]	Name of the Operational Reference Store database. Default is <code>cmx_ors</code> .
Connect URL. [jdbc:db2://<host name>:<port>/<database name>]	Connect URL for the master database. Default is <code>jdbc:db2://&lt;host name&gt;:&lt;port&gt;/&lt;database name&gt;</code> .
Enter the Operational Reference Store database user name [cmx_ors]	User name to access the Operational Reference Store. Default is <code>cmx_ors</code> .
Enter the Operational Reference Store database user password	Password to access the Operational Reference Store.
Enter locale name from the list: de, en_US, fr, ja, ko, zh_CN. [en_US]	Operating system locale. Default is <code>en_US</code> .
Enter the integer code of Operational Reference Store Timeline Granularity: Year 5, Month 4, Day 3, Hour 2, Minute 1, Second 0 [3]	Specify timeline units to use. Default is days. <b>Note:</b> The timeline granularity that you configure cannot be modified later. For more information about timeline, see the <i>Multidomain MDM Configuration Guide</i> .

4. After you import the initial metadata, review the following log files for errors:

- `seed.log`. Contains database errors.  
The `seed.log` file is in the following directory: `<MDM Hub installation directory>/database/bin/db2`
- `sip_ant.log`. Contains user input errors.  
The `sip_ant.log` file is in the following directory: `<MDM Hub distribution directory>/database/bin`

# CHAPTER 4



## Hub Server Installation

This chapter includes the following topics:

- [Installing the Hub Server, 37](#)
- [Review the Installer Workflow, 38](#)
- [Collect the Installation Values, 39](#)
- [Install the Hub Server from the Installation Wizard, 43](#)
- [Install the Hub Server from the Command Line \(UNIX Only\), 44](#)
- [Install the Hub Server Silently, 45](#)
- [Install the Hub Server on Nodes in the Cluster, 45](#)

### Installing the Hub Server

You can install the Hub Server using an installation wizard, a silent installation script, or, on UNIX systems, a command line script. If you complete the pre-installation tasks and collect the information you need before you start the installer, the installation process takes about 15 minutes.

	<p><b>STOP! Did you complete the pre-installation tasks?</b> The installation will fail if you do not complete the pre-installation tasks before you run the installer.</p>
	<p><b>Installation Readiness Checklist</b></p> <ul style="list-style-type: none"><li><input type="checkbox"/> Created an MDM implementation plan.</li><li><input type="checkbox"/> Verified that your servers meet the system requirements.</li><li><input type="checkbox"/> Verified that your operating system and software versions are supported.</li><li><input type="checkbox"/> Reviewed the known limitations for your operating system and software versions.</li><li><input type="checkbox"/> Installed and configured a supported version of an application server.</li><li><input type="checkbox"/> Installed and configured a supported version of a database management system.</li><li><input type="checkbox"/> Performed the pre-installation configuration tasks for your environment.</li><li><input type="checkbox"/> Saved the MDM license file in an accessible location.</li></ul>

If you missed a task, go back to the preceding chapters for help in completing the task.

When you are ready to proceed, perform the following steps:

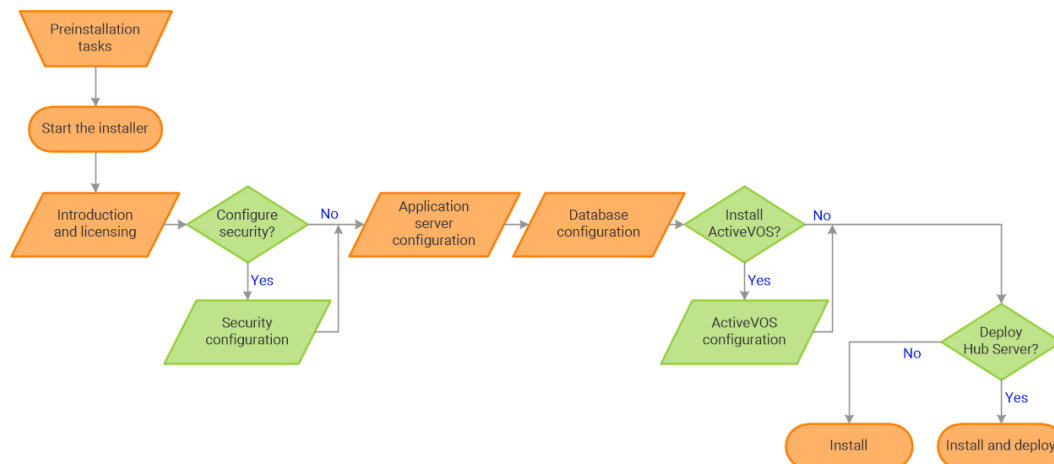
1. Review the installation workflow.

2. Collect all the values to enter during the installation.
3. Begin the installation by using the installation wizard or the command line, or in the silent mode.

## Review the Installer Workflow

Whether you use the installation wizard, the command line prompts, or the silent installation script, the installer goes through the steps in the same order. You must follow the installation workflow keeping the decision points in mind.

The following diagram walks you through the steps in the Hub Server installer workflow:



Take a moment to identify the decision points in the installation process. Consult your implementation plan to understand which paths to take at each of the following decision points:

1. **Configure security?** Use the default security or configure your own security by specifying a password hashing algorithm and certificate provider.
2. **Install ActiveVOS?** Administrators use Informatica ActiveVOS to set up review workflows. Authorized users can validate proposed changes to records before the master data is updated.  
**Note:** If you already have an installation of Informatica ActiveVOS, you do not need to install it again during the Hub Server installation.
3. **Deploy the Hub Server?** Allow the installer to run the `postInstallSetup` script. Among other important tasks, the script deploys the Hub Server to the application server. Alternatively, you can run the `postInstallSetup` script after you exit the installer.

# Collect the Installation Values

Before you run the installer, collect the installation values. The installer will prompt you for information about your application server, database management system, and other components. The best practice is to print out these tables and add the values for your environment.

## Application Server: Red Hat JBoss

Use the following table to collect the JBoss details that are required for the installation:

Property	Description	Default value	Server instance 1 value
JBoss Installation Directory	The location where JBoss is installed. <b>Note:</b> Do not include the <code>bin</code> directory.	-	
Configuration Name	Use the default configuration name. The Hub Server is deployed to the specified configuration.	standalone	standalone
Remote Port	The JBoss remote port. In a clustered environment, you identify multiple ports. <b>Note:</b> The JBoss remote port can conflict with the default database server port. If ports conflict, change one of the ports to resolve the conflict. For more information about changing ports, see the JBoss documentation.	4447	
Management Port	JBoss HTTP management port. The HTTPS management port is not supported. If port offset is configured for the application server, add the offset value to the default value. For example, if the port offset is 100, the management port value is 10090, which is (9990 + 100).	9990	

In a clustered environment, add details for the other JBoss instances to the following table:

Property	Server instance 2 value	Server instance 3 value	Server instance 4 value
JBoss Installation Directory			
Configuration Name			
Remote Port			
Management Native Port			

## Database: IBM Db2

Use the following table to collect the IBM Db2 details that are required for the installation:

Property	Description	Default value	Installation value
JDBC Driver Directory	Db2 directory that contains the following JDBC JAR files: - db2jcc.jar - db2jcc_license_cu.jar	-	
Server	Host name or IP address of the machine hosting IBM Db2 that contains the Master Database.	localhost	
Port	Port number that you want the Hub Server to use to communicate with IBM Db2.	50000	
Database Name	Name of the database that you created for Multidomain MDM.	-	
MDM Master Database Name	Name of the MDM Master Database. You create the MDM Master Database during the Hub Store installation by running the <code>sip_ant create_system</code> script.	cmx_system	
MDM Master Database User Name	Name of the IBM Db2 user that was used to import metadata into the MDM Master Database.	cmx_system	
MDM Master Database Password	Password of the IBM Db2 user.	-	

## Security - Optional

You can choose to configure the hash algorithm, the certificate provider, or both.

### Hash Key and Hash Algorithm

To configure a hash algorithm, you must implement the Java abstract class `com.siperian.sam.security.hashing.algorithms.HashAlgorithm` in the `siperian-server-hash.jar` file. The JAR file is located in the following directory: `<MDM installation directory>/hub/server/lib/hashing`

Use the following table to collect the hash algorithm details that were used in the Java abstract class implementation in the `siperian-server-hash.jar` file:

Property	Description	Default value	Installation value
Hash Key	Optional. A sequence of up to 32 hexadecimal characters with no delimiters. The key size can be up to 128 bits. Store the key securely. <b>Caution:</b> If your custom hash key is exposed or lost, you must reset all user passwords.	-	
Hash Algorithm	List of configured algorithms. To configure a custom algorithm, select <b>Other</b> .	SHA-3	
Name	Name of the custom hash algorithm.	-	



Property	Description	Default value	Installation value
Implementation File	Location of the custom hash algorithm archive. <b>Note:</b> The compressed file must contain all the necessary JAR files and supporting files.	-	
Canonical Class Name	Canonical class name for the hash algorithm implementation. For example: \$HASHING_CLASS_NAME\$	-	

### Certificate Provider

To implement a custom certificate provider, you must implement the `PKIUtil.java` interface in the `siperian-server-pkiutil.jar` file. The JAR file is located in the following directory: `<MDM installation directory>/hub/server/lib/pkiutils`

Use the following table to collect the details of the custom certificate provider that were used in the Java abstract class implementation in the `siperian-server-pkiutil.jar` file:

Property	Description	Default value	Installation value
Certificate Provider	By default, MDM authenticates trusted applications. To configure a custom provider, select <b>Other</b> .	Default	
Implementation File	Name of the custom certificate provider.	-	
Class Name	Class name for the certificate provider implementation.	-	

### Hub Console

The Hub Console requires the server details to connect to the Hub Server machine.

Use the following table to collect the server details that the Hub Console requires:

Property	Description	Default value	Installation value
Publicly Accessible Host Name	IP address or publicly accessible host name (FQDN) of the server to which the application server binds.	-	
HTTP Port	HTTP port of the server that the Hub Console must use.	-	

### Informatica ActiveVOS - Optional

For more information about Informatica ActiveVOS, ActiveVOS Central, or ActiveVOS Server, see the [Informatica ActiveVOS](#) documentation.

Use the following table to collect the details that are required for ActiveVOS installation:

Property	Description	Default value	Installation value
ActiveVOS Server Installation Directory	An empty directory where you want to install the ActiveVOS server.	<MDM Hub installation directory>/avos/server	
Server	Host name or IP address of the machine hosting IBM Db2 that contains the ActiveVOS database.	localhost	
Port	Port number that you want the Hub Server to use to communicate with IBM Db2.	50000	
Database Name	Name of the database that you created for ActiveVOS.	-	
ActiveVOS Schema	Name of the ActiveVOS schema. You create the ActiveVOS schema when you perform the pre-installation task by running the <code>sip_ant create_bpm</code> script.	avos	
ActiveVOS Schema User Name	Name of the IBM Db2 user that was used to create the ActiveVOS schema.	avos	
ActiveVOS Schema Password	Password of the IBM Db2 user.	-	
Web Services URL	Host and port where the ActiveVOS Server runs. You choose to use either the http or https protocol. The Hub Server uses the same URL that ActiveVOS Central (also called Process Central) uses to call the ActiveVOS Server. The URL is called the Process Central AeTaskService URL in the Informatica ActiveVOS documentation and has the following format: <code>http://[hostname.domainname]:[port]/active-bpel/services/AeB4PTaskClient-taskOperations</code> .	http://localhost:8080	
ActiveVOS Server Installer File	The Multidomain MDM distribution package contains the installer for the ActiveVOS Server.	ActiveVOS_Server_<operating system>_<version>	
Process Console User Name	An authorized user for the ActiveVOS Process Console.	-	
Process Console Password	Password for the ActiveVOS Process Console user.	-	

## Product Usage Toolkit

The product usage toolkit sends information about your MDM environment to Informatica. The information is used by Informatica Global Customer Support to help troubleshoot and provide recommendations for your environment. If you do not want the toolkit to send any information to Informatica, you can disable the toolkit after you install MDM.

Use the following table to collect the details that are required for installing the product usage toolkit:

Property	Description	Default value	Installation value
Industry	Type of industry that best matches your organization's business.	-	
Environment	Type of environment that you are installing in. If you install from the command line, enter one of the following numbers: - 1. Production environment - 2. Test or QA environment - 3. Development environment	-	
Does your network have a proxy server?	If yes, provide details about the proxy server.	No	
Host	Name or IP address of the proxy server.	-	
Port	Port number used by the proxy server.	-	
Domain Name	If your proxy server is part of a domain, the name of the domain.	-	
User Name	If you use a secure proxy server, the name of a user that can access MDM.	-	
Password	Password of the user.	-	

## Install the Hub Server from the Installation Wizard

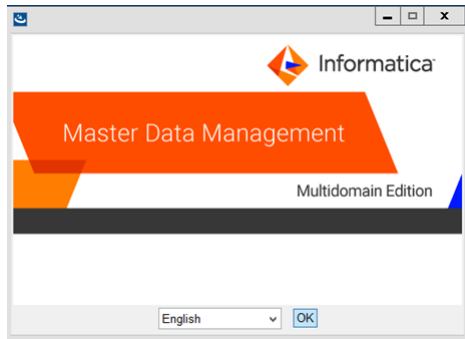
Use the installation wizard when you want to install the Hub Server in graphical mode. The installation wizard guides you through the installation.

You must use the same user name to install the Hub Server and the Process Server.

1. Start the application server.
2. Navigate to the following directory:  

```
<MDM Hub distribution directory>/<operating system name>/mrmserver
```
3. Start the installer by performing the task for your operating system:
  - **UNIX.** From the command line, run `./hub_install.bin`.
  - **Windows.** From the File Explorer, double-click `hub_install.exe`.

The Hub Server installation wizard starts.



**Tip:** If the installation wizard does not start, verify that a supported version of Java is installed and included in your classpath or environment variable.

4. Choose a language and click **OK**.  
The **Introduction** window appears.
5. Follow the online instructions. When prompted, enter the installation values that you collected.
6. At the end of the installation, in the **Configuration Summary** window, review the options that you selected.
7. If you need to make changes, go back to the appropriate window by clicking **Previous**. When you are done, click **Next** to return to the final window.
8. Click **Install**.
9. **Next step:** The next step depends on whether you chose to deploy the Hub Server from the installer.
  - If you chose to deploy the Hub Server from the installer, you do not need to deploy the Hub Server as part of the post-installation tasks.
  - If you chose to deploy the Hub Server later, you must deploy the Hub Server as part of the post-installation tasks.

## Install the Hub Server from the Command Line (UNIX Only)

On UNIX, you can install the Hub Server from the command line. Run the script to start the command line installation.

1. Start the application server.
2. From the command line, navigate to the following directory:  

```
<MDM Hub distribution directory>/<operating system name>/mrmsserver
```
3. Run the following command:  

```
./hub_install.bin -i console
```

The Hub Server installation prompts appear.
4. Enter the installation values that you collected.  
To use the default value shown in brackets, press **Enter**.
5. **Next step:** After the installation completes, the next step depends on whether you chose to deploy the Hub Server.

- If you chose to deploy the Hub Server from the installer, you do not need to deploy the Hub Server as part of the post-installation tasks.
- If you chose to deploy the Hub Server later, you must deploy the Hub Server as part of the post-installation tasks.

## Install the Hub Server Silently

You can install the Hub Server in silent mode. Before you start the silent installation, ensure that you configured the silent installation properties file.

1. Start the application server.
2. Copy the silent installation properties file to the target environment.
3. In the target environment, run the command for your operating system:
  - **UNIX.** `./hub_install.bin -f <absolute path to edited installer properties file>`
  - **Windows.** `hub_install.exe -f <absolute path to edited installer properties file>`

The silent installer runs in the background. The process can take a while.
4. If you chose to have the installer deploy the Hub Server, check `postinstallSetup.log` to verify that the installation was successful.

The log file is in the following directory:

```
<MDM Hub installation directory>/hub/server/logs
```

5. **Next step:** After the installation completes, the next step depends on whether you chose to deploy the Hub Server.
  - If you chose to deploy the Hub Server from the installer, you do not need to deploy the Hub Server as part of the post-installation tasks.
  - If you chose to deploy the Hub Server later, you must deploy the Hub Server as part of the post-installation tasks.

## Install the Hub Server on Nodes in the Cluster

In application server cluster environments, install the Hub Server on all the nodes of the cluster to which you must deploy the Hub Server application. You must complete the installation on one node of a cluster before you proceed to install on another node of a cluster.

For example, a JBoss cluster has two nodes that run in `host1` and `host2` and use RMI ports 4447 and 4448. You need to install the Hub Server on `node1` and `node2`. You must complete the Hub Server installation on any one node, such as `node2`, before you start installation on the other node, `node1`.

Ensure that the directory structure of the Hub Server installation is the same on all the nodes.

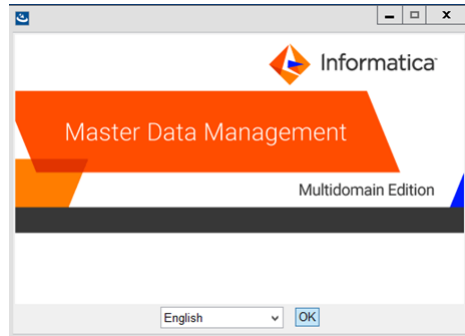
1. Start the JBoss cluster nodes on which you want to install the Hub Server.
2. Navigate to the following directory:
 

```
<MDM Hub distribution directory>/<operating system name>/mrmsserver
```
3. To start the Hub Server installer on a cluster node, run the command for your operating system:

**UNIX.** ./hub\_install.bin

**Windows.** hub\_install.exe

The Hub Server installation wizard starts.



4. Follow the online instructions. When prompted, enter the installation values that you collected.
5. **Next step:** After the installation completes, deploy the Hub Server manually on all the nodes that have the installation.  
If you performed an automatic deployment for the primary node, you do not need to manually deploy on the primary node.

You can use any node in the JBoss cluster to access the Hub Server.

## CHAPTER 5

# Hub Server Post-Installation Tasks

This chapter includes the following topics:

- [Copy the Installation Log Files, 48](#)
- [Verify the Version and Build Number, 48](#)
- [Install and Configure Elasticsearch, 49](#)
- [Configure the Hub Console Client \(Conditional\), 49](#)
- [Configure the MDM Hub Master Database Name, 49](#)
- [Verify and Configure Application Server Settings \(Conditional\), 50](#)
- [Deploy the Hub Server Applications \(Conditional\), 51](#)
- [Use a Script to Deploy the Hub Server Applications \(Conditional\), 52](#)
- [Manually Deploy the Hub Server Applications \(Conditional\), 53](#)
- [Configure Metadata Caching \(Optional\), 61](#)
- [Start the Hub Console, 62](#)
- [Register an Operational Reference Store, 63](#)
- [Additional Application Server Configuration \(Optional\), 65](#)

# Copy the Installation Log Files

The installation log files are useful for troubleshooting the Hub Server installation process. Copy the log files to the installation documentation directory. Informatica Global Customer Support might request copies of the log files if you contact them regarding installation issues.

The following table describes the different types of installation log files:

Log File Type	Description
Installation log	<ul style="list-style-type: none"><li>- File name. <code>Informatica_MDM_Hub_Server_Install_&lt;timestamp&gt;.xml</code></li><li>- Location. <code>&lt;MDM Hub installation directory&gt;/hub/server/logs</code></li><li>- Contents. Directories and registry entries that are created, names of the files installed and commands run, and status for each installed file.</li></ul>
Installation prerequisites log	<ul style="list-style-type: none"><li>- File name. <code>installPrereq.log</code></li><li>- Location. <code>&lt;MDM Hub installation directory&gt;/hub/server/logs</code></li><li>- Contents. Logs of prerequisite checks performed by the installer.</li></ul>
Debug log	<ul style="list-style-type: none"><li>- File name. <code>infamdm_installer_debug.txt</code></li><li>- Location. <code>&lt;MDM Hub installation directory&gt;/hub/server</code></li><li>- Contents. Detailed information about the choices that are made during the installation, and the actions performed by the installer.</li></ul>
Post-installation setup log	<ul style="list-style-type: none"><li>- File name. <code>postInstallSetup.log</code></li><li>- Location. <code>&lt;MDM Hub installation directory&gt;/hub/server/logs</code></li><li>- Contents. Summary of actions performed by the installer during the post-installation process and the errors in the post-installation process.</li></ul>
Hub Server log	<ul style="list-style-type: none"><li>- File name. <code>cmxserver.log</code></li><li>- Location. <code>&lt;MDM Hub installation directory&gt;/hub/server/logs</code></li><li>- Contents. Summary of the Hub Server operations.</li></ul>
JBoss log	<ul style="list-style-type: none"><li>- File name. <code>server.log</code></li><li>- Location. <code>&lt;JBoss installation directory&gt;/standalone/log</code></li><li>- Contents. JBoss event logs and error messages.</li></ul>

# Verify the Version and Build Number

Ensure that the correct version and build number of the Hub Server is installed.

1. Open a command prompt, and navigate to the following directory: `<MDM Hub installation directory>/hub/server/bin`
2. To verify the Hub Server version and build number, run the following command:

On UNIX. `versionInfo.sh`

On Windows. `versionInfo.bat`

**Note:** For AIX systems, change the `versionInfo.sh` script to run Java from the `<Java home>/jre/bin` directory.



# Install and Configure Elasticsearch

To use search, install and setup Elasticsearch for the MDM Hub.

For more information about installing and configuring search, see the "Search with Elasticsearch" chapter in the *Multidomain MDM Configuration Guide*.

## Configure the Hub Console Client (Conditional)

The Hub Console requires the host name and port properties in the `build.properties` file to connect to the Hub Server machine. You can override the host name and port number when you launch the Hub Console.

Edit the properties file in the following scenarios:

- If HTTPS is enabled for the application server and you need to use an HTTPS port.
- In a multi-node or a cluster environment, if you copied the Hub Server installation directory from one node to the other nodes, edit on each node.

1. Open the `build.properties` file that is in the following directory:

```
<MDM Hub installation directory>/hub/server/bin
```

2. Edit the following properties:

- `console.hostname`. Specify the IP address or publicly accessible host name (FQDN) of the server to which the application server binds.
- `console.webport`. Specify the HTTP or HTTPS port of the current node that the Hub Console must use.

3. Save the file.

4. Set relevant values for the `cmx.appserver.console.mode` property in the `cmxserver.properties` file in the following directory:

```
<MDM Hub installation directory>/hub/server/resources
```

Set the value to the communication protocol that you use, either HTTP or HTTPS.

After you edit the `build.properties` file, ensure that you run the `postInstallSetup` script to deploy the Hub Server applications.

## Configure the MDM Hub Master Database Name

If the MDM Hub Master Database has a name other than `cmx_system`, configure the MDM Hub Master Database name in the `cmxserver.properties` file.

1. Open the `cmxserver.properties` file in the following directory:

```
<MDM Hub installation directory>/hub/server/resources
```

2. Set the `cmx.server.masterdatabase.schemaname` property to the name that you specified for the MDM Hub Master Database.

You specified the name for the MDM Hub Master Database when you created it.

# Verify and Configure Application Server Settings (Conditional)

Verify and configure application server settings based on the requirements of the MDM Hub environment.

The following table describes the configuration tasks that you can perform:

Configuration Task	Description
Editing the application server settings	Required if you run the <code>postInstallSetup</code> script during the installation and the script fails because of incorrect application server settings.
Configuring the Hub Server for a JBoss multi-node or cluster environment	Required if you installed the Hub Server in a JBoss multi-node or cluster environment.

## Editing the Application Server Settings

If you run the `postInstallSetup` script during the installation and the script fails because of incorrect application server settings, edit the `build.properties` file. Also, if you want to change any application server settings, edit the file.

1. Open `build.properties` file in the following directory:

```
<MDM Hub installation directory>/hub/server/bin
```

2. Edit the application server settings and save the file.

After you edit the `build.properties` file, ensure that you run the `postInstallSetup` script to deploy the Hub Server applications.

## Configuring the Hub Server for a JBoss Multi-node or Cluster Environment

If you installed the Hub Server in a JBoss multi-node or a cluster environment, configure the Hub Server for the JBoss environment. To configure the Hub Server for the JBoss environment, configure the JBoss environment properties in the `cmxserver.properties` file.

For example, if a JBoss cluster or the multi-node environment has two nodes, which run on `host1` and `host2`, configure the JBoss environment properties on both the nodes.

1. On all nodes in the environment, open the `cmxserver.properties` file in the following directory:

```
<MDM Hub installation directory>/hub/server/resources
```

2. Configure the following JBoss environment properties:

Property	Description
<code>jboss.cluster</code>	Specifies whether EJB servers have multiple nodes or are clustered for the Hub Server. Add the <code>jboss.cluster</code> property, and set it to <code>true</code> .
<code>cmx.appserver.hostname</code>	Specifies machine names of the JBoss multi-node or the cluster environment. The machine names must be in the following format: <code>&lt;host name&gt;.&lt;domain&gt;.com</code> For example, if the cluster or the multi-node environment has two nodes that run on <code>host1</code> and <code>host2</code> and use RMI ports <code>4447</code> and <code>4448</code> , set <code>cmx.appserver.hostname=host1.&lt;domain&gt;.com,host2.&lt;domain&gt;.com</code>
<code>cmx.appserver.rmi.port</code>	Specifies remote port numbers. For example, if the cluster or the multi-node environment has two nodes, which run on <code>host1</code> and <code>host2</code> and use RMI ports <code>4447</code> and <code>4448</code> , set <code>cmx.appserver.rmi.port=4447,4448</code> <b>Note:</b> Separate the port numbers by a comma with no space between them. Ensure that the order of the port numbers corresponds to the order of the host names.

## Deploy the Hub Server Applications (Conditional)

You must deploy the Hub Server applications on the same machine on which you install the Hub Server.

The Hub Server applications must be able to find the Hub Server installation to which they belong. Therefore, do not transfer the EAR files for deployment on another machine. For example, you install the Hub Server on a test machine, and then deploy the applications on the production machine. The applications that you deploy on the production machine cannot find the installation on the test machine for information such as logging configuration.

You need to deploy the Hub Server applications in any of the following scenarios:

- The installation is in an application server multi-node environment or cluster environment.
- The installation completes, but the `postInstallSetup` script that you run during the installation fails.
- You skipped the `postInstallSetup` script during the installation.

If the installation is in an application server multi-node or a cluster environment, perform the following steps to complete the deployment:

1. Deploy the Hub Server applications on one node.
2. Copy all the files from the `certificates` directory on the node with the deployment to the `certificates` directory on all the other nodes. The `certificates` directory is in the following location:  
`<MDM Hub installation directory>/hub/server/resources`
3. Repackage the Hub Server EAR files on all the nodes that the certificates are copied to. The repackaging process updates the `hubConsole.jar` file with the correct certificates.
  - a. Navigate to the following directory:  
`<MDM Hub installation directory>/hub/server/bin`
  - b. Run the following command:

On UNIX.

```
./sip_ant.sh repack
```

On Windows.

```
sip_ant.bat repack
```

4. Deploy the Hub Server applications on the other nodes.

To deploy the Hub Server applications, use one of the following procedures described in the following table:

Procedure	Description
Use a script for deployment	You run the <code>postInstallSetup</code> script to deploy the Hub Server applications. Also, the script creates data sources and configures JMS message queues.
Manual deployment	You manually deploy the Hub Server applications. Also, you must manually create data sources and configure JMS message queues.

## Use a Script to Deploy the Hub Server Applications (Conditional)

If you skipped the `postInstallSetup` script during the installation, run the script. The post-installation process deploys the Hub Server applications, creates data sources, and configures JMS message queues.

1. Open a command prompt, and change to the following directory:

```
<MDM Hub installation directory>/hub/server
```

2. Run the `postInstallSetup` script.

**Note:** If you did not install the ActiveVOS version that is bundled with the MDM Hub installer, do not include the ActiveVOS user names and passwords in the command.

On UNIX.

```
./postInstallSetup.sh -Ddatabase.password=<MDM Hub Master database password>  
-Davos.username=<ActiveVOS Console username>  
-Davos.password=<ActiveVOS Console password>  
-Davos.jdbc.database.username=<ActiveVOS database username>  
-Davos.jdbc.database.password=<ActiveVOS database password>
```

**Note:** If you include the exclamation mark (!) in your password, you must include a backslash before the exclamation mark. For example, if your password is `!!cmx!!`, enter the following password: `\\!\\cmx\\!\\!`

On Windows.

```
postInstallSetup.bat  
-Ddatabase.password=<MDM Hub Master database password>  
-Davos.username=<ActiveVOS Console username>  
-Davos.password=<ActiveVOS Console password>  
-Davos.jdbc.database.username=<ActiveVOS database username>  
-Davos.jdbc.database.password=<ActiveVOS database password>
```

The ActiveVOS Console credentials are the same credentials as the administrative user in the application server.

The ActiveVOS database credentials are the same credentials that were used to run the `create_bpm` script.

# Manually Deploy the Hub Server Applications (Conditional)

If you skipped the `postInstallSetup` script during the installation or the `postInstallSetup` script fails, you can manually deploy the Hub Server applications. Ensure that you deploy the Hub Server applications from the Hub Server installation directory.

To deploy the Hub Server applications, perform the following tasks:

1. Creating data sources
2. Configuring JMS message queues
3. Deploying the Hub Server applications
4. Configuring JMS message queues in the Hub Server
5. Configuring server resources for Informatica Data Director (IDD)

## Step 1. Creating Data Sources

Before you manually deploy the Hub Server applications, create data sources. Also, if you want to configure multiple Process Servers or troubleshoot installation issues, create data sources.

1. Create the following directory structure under `<JBoss installation directory>/modules/:`

```
/com/informatica/mdm/jdbc/main
```

2. In the `main` directory, create the `module.xml` file with the following content:

```
<?xml version="1.0" encoding="UTF-8"?>
<module xmlns="urn:jboss:module:1.0" name="com.informatica.mdm.jdbc">
  <resources>
    <resource-root path="<JDBC driver file name>"/>
  </resources>
  <dependencies>
    <module name="javax.api"/>
    <module name="javax.transaction.api"/>
  </dependencies>
</module>
```

3. Download and copy the supported version of the JDBC drivers to the `main` directory.
4. Open the JBoss Management console, and click **Profile**.  
The **Datasources** page appears.
5. Click **Connector > Datasources**.
6. Click the **XA Datasources** tab.  
The **JDBC XA Datasources** page appears.
7. Click **Add**.  
The **Create XA Datasource** dialog box appears.
8. Enter values in the **Name** and **JNDI Name** fields, and click **Next**.

The following table lists the syntax of the values to specify:

Field Name	Syntax of Value
Name	jdbc/siperian-<IBM Db2 DB host name>-<database name>-<Operational Reference Store name>-ds
JNDI Name	java:jboss/datasources/jdbc/siperian-<IBM Db2 host name>-<database name>-<Operational Reference Store name>-ds

The **XA Datasource** page appears.

- In the XA Datasource Class field, enter `com.informatica.mdm.jdbc`, and click **Next**.

The **XA Properties** page appears.

- Enter the key and value pairs, and click **Next**.

The following table lists the key value pairs:

Key	Value
DatabaseName	Name of the database that you create.
DeferPrepares	false
DriverType	4
PortNumber	50000
ServerName	IBM Db2 server name
fullyMaterializeInputStreams	true
fullyMaterializeLobData	true
progressiveStreaming	2

The **Connection Settings** window appears.

- Enter values for the connection settings, and click **Done**.

The following table describes the connection fields:

Field Name	Description
Username	Name of the Operational Reference Store
Password	Password to access the Operational Reference Store

The **JDBC XA Datasources** page appears.

- In the Selection section, edit the properties under the **Pool** tab.

Property	Value
Min Pool Size	5
Max Pool Size	100
Strict Minimum	false
Prefill enabled	false
Flush Strategy	FailingConnectionOnly
Idle Timeout	0
Track Statements	false

- In the Selection section, edit the properties under the **Validation** tab.

Property	Value
Valid Connection Checker	org.jboss.jca.adapters.jdbc.extensions.db2.DB2ValidConnectionChecker
Check Valid Sql	Not applicable
Validate On Match	false
Background Validation	false
Validation Millis	0
Stale Connection Checker	org.jboss.jca.adapters.jdbc.extensions.db2.DB2StaleConnectionChecker
Exception Sorter	org.jboss.jca.adapters.jdbc.extensions.db2.DB2ExceptionSorter

- Select the data source that you added, and click **Enable**.

The data source that you added is enabled.

## Step 2. Configuring JMS Message Queues

Before you manually deploy the Hub Server applications, configure JMS message queues. Also, to troubleshoot issues, you might need to manually configure JMS message queues. For example, if the automated queue creation process fails or the queues accidentally drop after installation, you need to manually configure message queues.

The Services Integration Framework (SIF) uses a message-driven bean on the JMS message queue to process incoming asynchronous SIF requests. Configure the message queue and the connection factory for the application server that you use for the MDM Hub implementation. When you configure a JMS message queue, you also create a connection factory.

To configure the JMS message queue, perform the following tasks:

- Create a connection factory.

2. Create a JMS message queue for SIF requests.
3. Verify the JMS message queue and create a JMS message queue for search.

## Step 1. Create a Connection Factory

You can manually create a connection factory.

1. Open the JBoss Management console.
2. Click **Profile > Messaging > Destinations**.  
The **JMS Messaging Provider** page appears.
3. To view the settings of the **default** JMS messaging provider, click **View**.  
The **Messaging Destinations** page appears.
4. Click the **Connection Factories** link.  
The configured connection factories appear.
5. To add a connection factory, click **Add**.  
The **Create Connection Factory** dialog box appears.
6. Enter connection factory details.

The following table describes the connection factory details fields:

Field Name	Description
Name	Connection Factory name. Specify <code>java:/siperian.mrm.jms.xaconnectionfactory</code> .
JNDI Names	JNDI Name. Specify <code>java:/siperian.mrm.jms.xaconnectionfactory</code> .
Connector	Connector that you use to connect to the server. The following connectors are available: - <code>in-vm</code> . Use the <code>in-vm</code> connector to connect to a local server. - <code>netty</code> . Use the <code>netty</code> connector to connect to a remote server.

7. Click **Save**.  
The connection factory is created.

## Step 2. Create a JMS Message Queue for SIF Requests

To create a JMS message queue, use the JBoss Management console.

1. Open the JBoss Management console.
2. Click **Profile > Messaging > Destinations**.  
The **JMS Messaging Provider** page appears.
3. Click **View** to view the settings of the **default** JMS messaging provider.  
The **JMS Queue destination** page appears.
4. Click **Add**.  
The **Create JMS Queue** dialog box appears.



- Specify the following options:

Option	Value
Name	java:/queue/siperian.sif.jms.queue
JNDI Name	java:/queue/siperian.sif.jms.queue
Durable	Clear the <b>Durable</b> check box.

- Click **Save**

The queue is created.

### Step 3. Create a JMS Message Queue for Search

The search feature requires a JMS queue to enable full-text search within Data Director. You can add the queue for search from the JBoss Management console or by editing the `standalone-full.xml` file. If you edit the file, you can verify that the connection pool and the JMS queue for SIF requests appear in the file.

- Navigate to the following directory:

```
<JBoss installation directory>/standalone/configuration
```

- Open the following file in a text editor: `standalone-full.xml`

- Search for `queue/siperian.sif.jms.queue`.

The following code sample show the configuration of the connection pool

`siperian.mrm.jms.xaconnectionfactory` and the JMS queue `queue/siperian.sif.jms.queue` :

```
<jms-connection-factories>
...
<pooled-connection-factory name="siperian.mrm.jms.xaconnectionfactory">
  <transaction mode="xa"/>
  <connectors>
    <connector-ref connector-name="in-vm"/>
  </connectors>
  <entries>
    <entry name="java:/siperian.mrm.jms.xaconnectionfactory"/>
  </entries>
</pooled-connection-factory>
</jms-connection-factories>

<jms-destinations>
...
<jms-queue name="queue/siperian.sif.jms.queue">
  <entry name="queue/siperian.sif.jms.queue"/>
  <entry name="jboss/exported/queue/siperian.sif.jms.queue"/>
</jms-queue>
...
</jms-destinations>
```

- After the tag `</jms-queue>`, insert the following code to create the JMS queue for search.

```
<jms-queue name="queue/informatica.mdm.sss.jms.queue">
  <entry name="queue/informatica.mdm.sss.jms.queue"/>
  <entry name="jboss/exported/queue/informatica.mdm.sss.jms.queue"/>
</jms-queue>
```

- Save the file.

## Step 3. Deploying the Hub Server Applications

You can manually deploy the Hub Server applications. Ensure that you deploy the Hub Server applications from the Hub Server installation directory.

1. Stop the JBoss application server.
2. If you have any existing deployments, remove the following deployment files from the JBoss deployment directory:

Deployment File Name	Description
siperian-mrm.ear	Required. The Hub Server application.
provisioning-ear.ear	Required. The Provisioning tool application.
entity360view-ear.ear	Optional. The Entity 360 framework.
ave_jboss.ear	Required. The ActiveVOS Server application.
activevos-central.war	Required. The ActiveVOS Central application.

3. Copy the deployment files listed in the preceding step from the source to the target directories:

Source: Hub Server installation directory

Target: `<JBoss installation directory>\standalone\deployments`

4. Start the application server.

For more information about deploying applications, see the JBoss documentation.

## Step 4. Configuring JMS Message Queues on the Hub Server

After you manually deploy the Hub Server applications, configure JMS message queues on the Hub Server.

To configure the JMS message queue on the Hub Server, perform the following tasks:

1. Start the Hub Console.
2. Add a message queue server.
3. Add a message queue.

### Step 1. Start the Hub Console

To access the MDM Hub, start the Hub Console.

1. Open a browser window and enter the following URL:

`http://<MDM Hub host>:<port number>/cmx/`

The Hub Console launch page appears.

2. Enter your user name and password, and then click **Download**.

The MDM Hub application JAR file that is required to launch the Hub Console downloads.

**Note:** If you cannot download the MDM Hub application JAR file, contact your MDM administrator. The administrator can distribute the JAR file from the following directory: `<MDM Hub installation directory>/hub/server/resources/hub`

3. Run the application JAR file.

**Note:** If you do not have an SSL certificate on the client machine, and want to access the Hub Console through an HTTPS connection, you must install it. To do so, you can use the following procedure:

- Import the certificate to the Java keystore of your local client machine, by running the following command:

```
keytool -import -trustcacerts -alias <certificate alias name> -file <certificate alias file> -keystore <local java cacerts keystore location>
```

- Pass the location and password of the truststore file that contains the certificate, by running the following command:

```
java -Djavax.net.ssl.trustStore=<truststore file location> -Djavax.net.ssl.trustStorePassword=<truststore_password> -jar hubConsole.jar
```

Use a separate truststore that contains all the custom trust certificates, rather than the default cacert file. Obtain the certificates from the team that maintains the application server. The server might use either a self signed certificate or security certificate. Download the .jar file only if there is a version change on the server. Each time you download the .jar file, launch it using the same command.

4. To specify the maximum memory allocation pool for the application, run the following command:

```
java -Xmx<n>G -jar hubConsole.jar
```

Where <n> is the maximum memory allocation in GB.

The **Informatica MDM Hub Login** dialog box appears.

5. Enter your user name and password.
6. If you want to connect to a specific Hub Server node or if you use a load balancer or a reverse proxy server, override the pre-configured connection parameters in the Connection Property field.

Enter the parameters in the following format:

```
<host name>:<port name>
```

Where, host name and port name are either the host name and port name of the Hub Server or that of the load balancer or the reverse proxy server that you use.

7. Click **OK**.

The **Change database** dialog box appears.

8. Select the target database.

The target database is the MDM Hub Master Database.

9. Select a language from the list, and click **Connect**.

The Hub Console user interface appears in the language that you select. If you need to change the language in which the Hub Console user interface appears, restart the Hub Console with the language of your choice.

## Step 2. Add a Message Queue Server

Before you add a message queue, you must add a message queue server to the MDM Hub implementation.

1. In the Hub Console, click **Message Queues** under the Configuration workbench.
2. Click **Write Lock > Acquire Lock**.
3. Right-click the middle pane of the Message Queues tool, and then click **Add Message Queue Server**.  
The **Add Message Queue Server** dialog box appears.
4. Enter the message queue server details.

The following table describes the fields that you use to configure the JMS message queue server:

Field Name	Value
Connection Factory Name	Name of the connection factory. Specify <code>java:/siperian.mrm.jms.xaconnectionfactory</code> .
Display Name	Name of the message queue server that must appear in the Hub Console. Specify <code>java:/siperian.mrm.jms.xaconnectionfactory</code> .

- Click **OK**.

The message queue server is added.

### Step 3. Add a Message Queue

You can add the custom message queue to a message queue server.

- In the Hub Console, click **Message Queues** under the Configuration workbench.
- Click **Write Lock > Acquire Lock**.
- Right-click the message queue server in the middle pane of the Message Queues tool, and then click **Add Message Queue**.

The **Add Message Queue** dialog box appears.

- Enter JMS message queue details.

The following table describes the JMS message queue fields:

Field Name	Value
Queue Name	Specify the name of the message queue.
Display Name	Specify the name of the message queue that must appear in the Hub Console.

- Click **OK**.

The message queue is added to the message queue server.

- In the right pane, select the **Use with message triggers** option.

- Click **Test**.

The result of the message queue test appears.

## Step 5. Configuring Server Resources for Informatica Data Director

If you want to use Informatica Data Director (IDD), configure the JNDI URL resource.

- Open the `standalone-full.xml` file in the following directory:

```
<JBoss installation directory>/standalone/configuration
```

- Add the `simple` name configuration as shown in the following code:

In the subsystem with the name `urn:jboss:domain:naming:<n.n>`, add the following `simple` name configuration within the `bindings` element:

```
<simple name="java:jboss/url/hubserver/home" value="file:///<Hub Server installation
directory>" type="java.net.URL"/>
```

# Configure Metadata Caching (Optional)

Metadata caches manage items such as data objects, repository objects, and search tokens. The MDM Hub uses Infinispan for metadata caching. Infinispan is installed with the Hub Server. For the caches that the Hub Server uses, the Infinispan configuration file contains default attribute values.

Run the MDM Hub with the default attribute values for the caches. If you experience performance issues, you can fine-tune the attribute values to better suit your environment.

The following table summarizes the default attribute values:

Infinispan Element and Attribute	Default Value	Description
locking acquire-timeout	60000	Maximum time during which the Hub Server can try to acquire a lock.
transaction stop-timeout	30000	When a cache stops, this attribute sets the maximum time that Infinispan waits while the Hub Server finishes remote and local transactions.
transport cluster	infinispan-cluster	Name for the underlying group communication cluster.
transport stack	UDP	Type of configuration: UDP or TCP. The configurations are defined in the <code>jgroups-udp.xml</code> file and the <code>jgroups-tcp.xml</code> file.
transport node-name	<code>\$node\$</code>	Name of the current node. The Hub Server sets this attribute. The node-name defaults to a combination of the host name and a random number. The number differentiates multiple nodes on the same host.
transport machine	<code>\$machine\$</code>	ID of the machine where the node runs. The Hub Server sets this attribute.
expiration lifespan	--	Maximum lifespan of a cache entry in milliseconds. When a cache entry exceeds its lifespan, the entry expires within the cluster. If you need to optimize performance, increase the lifespan for the following caches: <code>DISABLE_WHEN_LOCK</code> , <code>DATA_OBJECTS</code> , and <code>REPOS_OBJECTS</code> . For example, you can increase the lifespan from one hour (3600000) to one day (86400000). Each cache has its own default value for this attribute. To find the default values, open the <code>infinispanConfig.xml</code> file.
expiration interval	--	Maximum interval for checking the lifespan. If you need to optimize performance, increase the interval for the following caches: <code>DISABLE_WHEN_LOCK</code> , <code>DATA_OBJECTS</code> , and <code>REPOS_OBJECTS</code> . For example, you can increase the interval from five seconds (5000) to five minutes (300000). Each cache has its own default value for this attribute. To find the default values, open the <code>infinispanConfig.xml</code> file.

## Editing Infinispan Attributes

To configure metadata caching attributes, edit the `infinispanConfig.xml` file for the Hub Server. For help with the Infinispan configuration, see the Infinispan documentation.

**Note:** The Process Server also has an Infinispan configuration file. The default attribute values should be sufficient, however if you notice issues with the performance of the Process Server, you can fine-tune the attribute values.

1. Navigate to the following directory: `<MDM Hub installation directory>/hub/server/resources`
2. Make a backup copy of the following file: `infinispanConfig.xml`
3. Open the `infinispanConfig.xml` file and find the Infinispan version number, which appears in the `xsi:schemaLocation` attribute.
4. Review the documentation for the Infinispan version.

**Note:** In the following URLs, substitute the version number wherever the path contains `##`.

- To view the configuration schema, go to the URL that is contained in the `xsi:schemaLocation` attribute in the file.
  - To learn about the attributes, go to <https://docs.jboss.org/infinispan/<##.x>/configdocs/>
  - To learn about Infinispan, go to <http://infinispan.org/docs/<##.x>> and select the "Frequently Asked Questions" link.
5. Edit the file and save it.

## Start the Hub Console

To access the MDM Hub, start the Hub Console by using an HTTP or HTTPS connection.

Before you start the Hub Console, ensure that you have the following information:

- Host name and port number for the URL
- User name and password
- An SSL certificate on the client machine, if you want to access the Hub Console through an HTTPS connection

1. Open a browser window and enter the following URL:

```
http://<MDM Hub host>:<port number>/cmx/
```

The Hub Console launch page appears.

2. Enter your user name and password, and then click **Download**.

The MDM Hub application JAR file that is required to launch the Hub Console downloads.

**Note:** If you cannot download the MDM Hub application JAR file, contact your MDM administrator. The administrator can distribute the JAR file from the following directory: `<MDM Hub installation directory>/hub/server/resources/hub`

3. Run the application JAR file.

**Note:** If you do not have an SSL certificate on the client machine, and want to access the Hub Console through an HTTPS connection, you must install it. To do so, you can use the following procedure:

- Import the certificate to the Java keystore of your local client machine, by running the following command:

```
keytool -import -trustcacerts -alias <certificate alias name> -file <certificate alias file> -keystore <local java cacerts keystore location>
```

- Pass the location and password of the truststore file that contains the certificate, by running the following command:

```
java -Djavax.net.ssl.trustStore=<truststore file location> -Djavax.net.ssl.trustStorePassword=<truststore_password> -jar hubConsole.jar
```

Use a separate truststore that contains all the custom trust certificates, rather than the default cacert file. Obtain the certificates from the team that maintains the application server. The server might use either a self signed certificate or security certificate. Download the .jar file only if there is a version change on the server. Each time you download the .jar file, launch it using the same command.

4. To specify the maximum memory allocation pool for the application, run the following command:

```
java -Xmx<n>G -jar hubConsole.jar
```

Where <n> is the maximum memory allocation in GB.

The **Informatica MDM Hub Login** dialog box appears.

5. Enter your user name and password.
6. If you want to connect to a specific Hub Server node or if you use a load balancer or a reverse proxy server, override the pre-configured connection parameters in the Connection Property field.

Enter the parameters in the following format:

```
<host name>:<port name>
```

Where, host name and port name are either the host name and port name of the Hub Server or that of the load balancer or the reverse proxy server that you use.

7. Click **OK**.

The **Change database** dialog box appears.

8. Select the target database.

The target database is the MDM Hub Master Database.

9. Select a language from the list, and click **Connect**.

The Hub Console user interface appears in the language that you select. If you need to change the language in which the Hub Console user interface appears, restart the Hub Console with the language of your choice.

## Register an Operational Reference Store

After you create an Operational Reference Store, you must register it through the Hub Console. Register an Operational Reference Store with a single MDM Hub Master Database.

1. Start the Hub Console.  
The **Change database** dialog box appears.
2. Select **MDM Hub Master Database**, and click **Connect**.
3. Under the **Configuration** workbench, click the **Databases** tool.

4. From the **Write Lock** menu, click **Acquire Lock**.
5. In the Databases pane, click the **Register database** button.  
The **Informatica MDM Hub Connection Wizard** appears.
6. Select the IBM Db2 database type option, and click **Next**.
7. Configure connection properties for the database.
  - a. Specify the connection properties, and click **Next**.

The following table lists and describes the connection properties:

Property	Description
Database Display Name	Name for the Operational Reference Store that must appear in the Hub Console.
Machine Identifier	Prefix given to keys to uniquely identify records from the Hub Store instance.
Database server name	IP address or name of the server that hosts the IBM Db2 database.
Database name	Name of the database that you create.
Port	Port of the IBM Db2 database. The default is 50000.
Schema Name	Name of the Operational Reference Store.
User name	User name for the Operational Reference Store. By default, this is the user name that you specify in the script that you use to create the Operational Reference Store. This user owns all the Operational Reference Store database objects in the Hub Store. <b>Note:</b> If you created a proxy user, use the proxy user name instead of the Operational Reference Store user name.
Password	Password associated with the user name for the Operational Reference Store. For IBM Db2, the password is case sensitive. By default, this is the password that you specify when you create the Operational Reference Store.
DDM connection URL	Optional. URL to connect to the Dynamic Data Masking application. The URL is similar to the URL that you use to connect to the database, except that the Dynamic Data Masking application URL uses the Dynamic Data Masking host name and port number.

**Note:** The **Schema Name** and the **User Name** are both the names of the Operational Reference Store that you specified when you created the Operational Reference Store. If you need this information, consult your database administrator.

The **Summary** page appears.

- b. Review the summary, and specify additional connection properties.



The following table lists additional connection properties that you can configure:

Property	Description
Connection URL	Connect URL. The Connection Wizard generates the connect URL by default. The following example shows the format of the connect URL: <code>jdbc:db2://database_host:port/db_name</code>
Create data source after registration	Select to create the data source on the application server after registration. Select to create the data source on the application server after registration. If you do not select the option, you must manually configure the data source. <b>Note:</b> In application server cluster environments, manually create the data sources and connection pools for the Operational Reference Stores.

8. Click **Finish**.  
The **Registering Database** dialog box appears.
9. Click **OK**.  
The MDM Hub registers the Operational Reference Store.
10. Select the Operational Reference Store that you registered, and click the **Test database connection** button.  
The Test Database dialog box displays the result of the database connection test.
11. Click **OK**.  
The Operational Reference Store is registered, and the connection to the database is tested.

## Additional Application Server Configuration (Optional)

Perform additional JBoss configuration based on the requirements of the MDM Hub environment.

The following table describes the configurations that you can perform:

Configuration	Description
Configuring JBoss for standalone Process Server instances	Required to configure JBoss for standalone Process Server instances in the following scenarios: <ul style="list-style-type: none"> <li>- You want to install a Process Server instance on a JBoss instance on which you do not have the Hub Server installed.</li> <li>- You want to install multiple, standalone Process Server instances.</li> </ul>
Configuring EJB security	Required if you want to configure EJB security at the JBoss application server level.

## Configuring JBoss for Standalone Process Server Instances

To install a Process Server instance on a JBoss instance on which you do not have the Hub Server installed, configure the JBoss instance. Also, if you want to install multiple Process Server instances, configure a separate JBoss instance for each additional Process Server.

- ▶ Copy the JDBC files from the JBoss instance of the Hub Server to the JBoss instance on which you want to deploy the Process Servers.

The JDBC files are in the following directory: `<JBoss installation directory>/modules/com/informatica/mdm/jdbc/main`

## Configuring EJB Security

You can configure EJB security at the JBoss application server level or at the Hub Server level to prevent unauthorized access to data and other resources in the MDM Hub. To configure EJB security at the JBoss application server level, enable the JBoss remoting-connector security.

1. Log in to the Hub Console and change the Hub Console password to a password that adheres to the JBoss password policy.

**Note:** Ensure that the password that you set adheres to the JBoss password policy and the configured MDM Hub global password policy. This is important because the same password needs to be set for the Hub Console and for JBoss.

For information about the MDM Hub global password policy, see the *Multidomain MDM Configuration Guide*.

- a. Disable remoting-connector security.
  - b. Change the Hub Console password to adhere to the JBoss password policy.
    1. Log in to the Hub Console, change the database to the MDM Hub Master Database, and click **Connect**.
    2. Select the **Users** tool under **Configuration** workbenches and acquire a write lock.
    3. Select the `admin` user under the **User** tab, and click the **Change password** icon.  
The **Change Password** dialog box appears.
    4. Change the password to adhere to the JBoss password policy, and click **OK**.
2. Enable the remoting-connector security in the `standalone-full.xml` file.
    - a. Open the `standalone-full.xml` file in the following directory:  
`<JBoss installation directory>/standalone/configuration`
    - b. Add the `security-realm` attribute as shown in the following code:  
In the subsystem with the name `urn:jboss:domain:remoting:<n.n>`, add the following attribute to the `remoting-connector` configuration:  

```
security-realm=<"<security realm name>">
```
  3. In JBoss, register the MDM Hub users that must have access to the Hub Server.
    - a. Run the following script to register the MDM Hub users:  
On UNIX. `<JBoss installation directory>/bin/add-user.sh`  
On Windows. `<JBoss installation directory>\bin\add-user.bat`

- b. Answer the prompts in the following table:

Prompt	Value
What type of user do you wish to add? a) Management User (mgmt-users.properties) b) Application User (application-users.properties)	Specify the option b.
Realm (ApplicationRealm)	Use the name of the security realm. Default is ApplicationRealm.
Username	User name of the MDM Hub user.
Password	Password of the MDM Hub user that adheres to JBoss password policy.
What roles do you want this user to belong to?	You must specify hubconsole.

4. Enable JBoss security on the Hub Server.

- a. Open `cmxserver.properties` in the following directory:

```
<MDM Hub installation directory>/hub/server/resources
```

- b. Uncomment the following property:

```
#cmx.jboss7.security.enabled=true
```

5. Repackage the Hub Server EAR files.

- a. Navigate to the following directory:

```
<MDM Hub installation directory>/hub/server/bin
```

- b. Run the following command:

On UNIX.

```
./sip_ant.sh repackage
```

On Windows.

```
sip_ant.bat repackage
```

6. Deploy the Hub Server EAR files.

- a. Stop the JBoss application server.

- b. If you have any existing deployments, remove the following deployment files from the JBoss deployment directory:

Deployment File Name	Description
siperian-mrm.ear	Required. The Hub Server application.
provisioning-ear.ear	Required. The Provisioning tool application.
entity360view-ear.ear	Optional. The Entity 360 framework.

Deployment File Name	Description
ave_jboss.ear	Required. The ActiveVOS Server application.
activevos-central.war	Required. The ActiveVOS Central application.

- c. Copy the deployment files listed in the preceding step from the source to the target directories:

Source: Hub Server installation directory

Target: <JBoss installation directory>\standalone\deployments

- d. Start the application server.

For more information about deploying applications, see the JBoss documentation.

# CHAPTER 6



## Process Server Installation

This chapter includes the following topics:

- [Installing the Process Server, 69](#)
- [Review the Installer Workflow, 70](#)
- [Collect the Installation Values, 71](#)
- [Install the Process Server from the Installation Wizard, 73](#)
- [Install the Process Server from the Command Line \(UNIX Only\), 74](#)
- [Install the Process Server Silently, 75](#)
- [Install the Process Server on Nodes in the Cluster, 75](#)

### Installing the Process Server

You can install the Process Server using an installation wizard, a silent installation script, or, on UNIX systems, a command line script. If you complete the pre-installation tasks and collect the information you need before you start the installer, the installation process takes about 15 minutes.

	<p><b>STOP! Did you complete the pre-installation tasks?</b> The installation will fail if you do not complete the pre-installation tasks before you run the installer.</p>
	<p><b>Installation Readiness Checklist</b></p> <ul style="list-style-type: none"><li><input type="checkbox"/> Created an MDM implementation plan.</li><li><input type="checkbox"/> Verified that your servers meet the system requirements.</li><li><input type="checkbox"/> Verified that your operating system and software versions are supported.</li><li><input type="checkbox"/> Reviewed the known limitations for your operating system and software versions.</li><li><input type="checkbox"/> Installed and configured a supported version of an application server.</li><li><input type="checkbox"/> Installed and configured a supported version of a database management system.</li><li><input type="checkbox"/> Performed the pre-installation configuration tasks for your environment.</li><li><input type="checkbox"/> Saved the MDM license file in an accessible location.</li></ul>

If you missed a task, go back to the preceding chapters for help in completing the task.

When you are ready to proceed, perform the following steps:

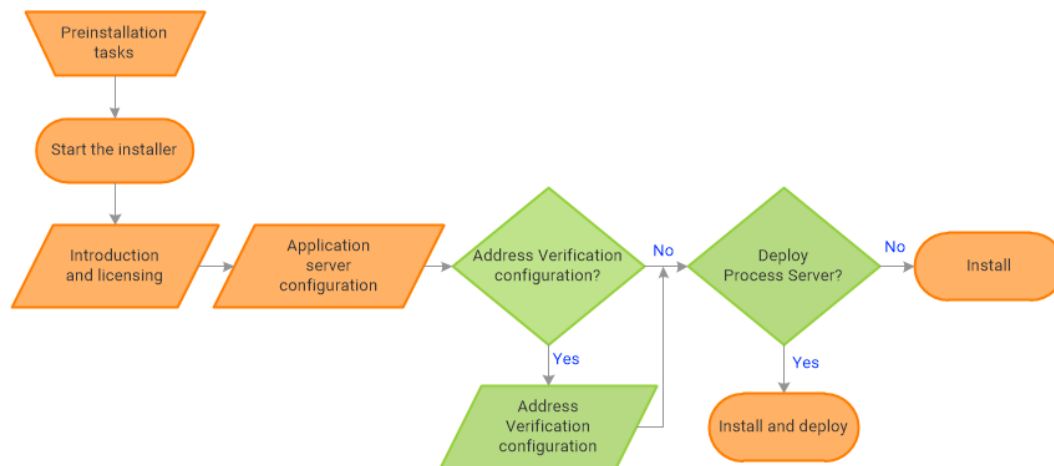
1. Review the installation workflow.

2. Collect all the values to enter during the installation.
3. Begin the installation by using the installation wizard or the command line, or in the silent mode.

## Review the Installer Workflow

Whether you use the installation wizard, the command line prompts, or the silent installation script, the installer goes through the steps in the same order. You must follow the installation workflow keeping the decision points in mind.

The following diagram walks you through the steps in the Process Server installer workflow:



Take a moment to identify the decision points in the installation process. Consult your implementation plan to understand which paths to take at each of the following decision points:

1. **Configure Address Verification?** Administrators use Informatica Address Verification to interpret, process, and format the addresses included in records. Authorized users can validate, correct and certify addresses that are included in records before the master data is updated.  
**Note:** If you already installed a supported version of Informatica Address Verification, configure the Configuration and Parameters file locations and the type of address processing that you want to perform. Otherwise, use the default file locations and specify the type of address verification that you want to perform.
2. **Deploy the Process Server?** Allow the installer to run the `postInstallSetup` script. Among other important tasks, the script deploys the Process Server to the application server. Alternatively, you can run the `postInstallSetup` script after you exit the installer.

# Collect the Installation Values

Before you run the installer, collect the installation values. The installer will prompt you for information about your application server, database management system, and other components. The best practice is to print out these tables and add the values for your environment.

## Application Server: Red Hat JBoss

Use the following table to collect the JBoss details that are required for the installation:

Property	Description	Default value	Server instance 1 value
JBoss Installation Directory	The location where JBoss is installed. <b>Note:</b> Do not include the <code>bin</code> directory.	-	
Configuration Name	Use the default configuration name. The Process Server is deployed to the specified configuration.	standalone	standalone
Remote Port	The JBoss remote port. In a clustered environment, you identify multiple ports. <b>Note:</b> The JBoss remote port can conflict with the default database server port. If ports conflict, change one of the ports to resolve the conflict. For more information about changing ports, see the JBoss documentation.	4447	
Management Port	JBoss HTTP management port. The HTTPS management port is not supported. If port offset is configured for the application server, add the offset value to the default value. For example, if the port offset is 100, the management port value is 10090, which is (9990 + 100).	9990	

In a clustered environment, add details for the other JBoss instances to the following table:

Property	Server instance 2 value	Server instance 3 value	Server instance 4 value
JBoss Installation Directory			
Configuration Name			
Remote Port			
Management Native Port			

## Informatica Address Verification

**Note:** Informatica Address Verification was previously called AddressDoctor.

If you plan to install Informatica Address Verification, record the following properties:

Property	Description	Default values	Server instance 1 value
Configuration File	<p>The location of the Informatica Address Verification configuration file <code>SetConfig.xml</code>. You use the file for general configurations, such as reference address database, unlock code for Informatica Address Verification, and memory settings.</p> <p>If you already installed Address Verification, use the location of your configuration file. Otherwise, use the default file location</p>	<MDM Hub installation directory>\hub\cleanse\resources\AddressDoctor\5\SetConfig.xml	
Parameters File	<p>The location of the Informatica Address Verification parameters file <code>Parameters.xml</code>. You use the file to configure how Informatica Address Verification interprets, processes, and formats the addresses.</p> <p>If you already installed Address Verification, use the location of your parameters file. Otherwise, use the default file location</p>	<MDM Hub installation directory>\hub\cleanse\resources\AddressDoctor\5\Parameters.xml	
Correction Type	<p>The type of address processing that you want to perform.</p> <p>Use one of the following correction types:</p> <ul style="list-style-type: none"> <li>- PARAMETERS_DEFAULT. Default correction type. Indicates the use of the correction type defined in the <code>Parameters.xml</code> file.</li> <li>- PARSE_ONLY. Parses and assigns address elements to the appropriate fields.</li> <li>- CORRECT_ONLY. Validates addresses against the postal data and corrects the addresses.</li> <li>- CERTIFY_ONLY. Verifies addresses in accordance with the postal certifications to meet country-specific postal authority requirements.</li> <li>- CORRECT_THEN_CERTIFY. Validates addresses against the postal data and corrects the addresses. Then verifies addresses in accordance with postal certifications to meet country-specific postal authority requirements.</li> <li>- TRY_CERTIFY_THEN_CORRECT. Verifies addresses in accordance with postal certifications to meet country-specific postal authority requirements. If the address verifications fail, the process validates the addresses against the postal data and corrects the addresses.</li> </ul>	PARAMETERS_DEFAULT	



## Product Usage Toolkit

The product usage toolkit sends information about your MDM environment to Informatica. The information is used by Informatica Global Customer Support to help troubleshoot and provide recommendations for your environment. If you do not want the toolkit to send any information to Informatica, you can disable the toolkit after you install MDM.

Use the following table to collect the details that are required for installing the product usage toolkit:

Property	Description	Default value	Installation value
Industry	Type of industry that best matches your organization's business.	-	
Environment	Type of environment that you are installing in. If you install from the command line, enter one of the following numbers: - 1. Production environment - 2. Test or QA environment - 3. Development environment	-	
Does your network have a proxy server?	If yes, provide details about the proxy server.	No	
Host	Name or IP address of the proxy server.	-	
Port	Port number used by the proxy server.	-	
Domain Name	If your proxy server is part of a domain, the name of the domain.	-	
User Name	If you use a secure proxy server, the name of a user that can access MDM.	-	
Password	Password of the user.	-	

## Install the Process Server from the Installation Wizard

Use the installation wizard when you want to install the Process Server in graphical mode. The installation wizard guides you through the installation.

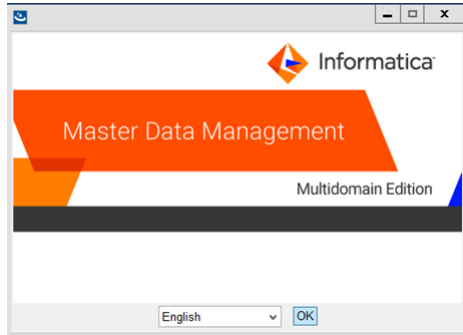
You must use the same user name to install the Hub Server and the Process Server.

1. Start the application server.
2. Navigate to the following directory:

```
<MDM Hub distribution directory>/<operating system name>/mrmcleanse
```

3. Start the installer by performing the task for your operating system:
  - **UNIX.** From the command line, run `./hub_cleanse_install.bin`.
  - **Windows.** From the File Explorer, double-click `hub_cleanse_install.exe`.

The Process Server installation wizard starts.



4. Choose a language and click **OK**.  
The **Introduction** window appears.
5. Follow the online instructions. When prompted, enter the installation values that you collected.
6. At the end of the installation, in the **Configuration Summary** window, review the options that you selected.
7. If you need to make changes, go back to the appropriate window by clicking **Previous**. When you are done, click **Next** to return to the final window.
8. Click **Install**.
9. **Next step:** The next step depends on whether you chose to deploy the Process Server from the installer.
  - If you chose to deploy the Process Server from the installer, you do not need to deploy the Process Server as part of the post-installation tasks.
  - If you chose to deploy the Process Server later, you must deploy the Process Server as part of the post-installation tasks.

## Install the Process Server from the Command Line (UNIX Only)

On UNIX, you can install the Process Server from the command line. Run the script to start the command line installation.

1. Start the application server.
2. From the command line, navigate to the following directory:  
`<MDM Hub distribution directory>/<operating system name>/mrmcleanse`
3. Run the following command:  
`./hub_cleanse_install.bin -i console`  
The Process Server installation prompts appear.
4. Enter the installation values that you collected.

To use the default value shown in brackets, press **Enter**.

5. **Next step:** After the installation completes, the next step depends on whether you chose to deploy the Process Server.
  - If you chose to deploy the Process Server from the installer, you do not need to deploy the Process Server as part of the post-installation tasks.
  - If you chose to deploy the Process Server later, you must deploy the Process Server as part of the post-installation tasks.

## Install the Process Server Silently

You can install the Process Server in silent mode. Before you start the silent installation, ensure that you configured the silent installation properties file.

1. Start the application server.
2. Copy the silent installation properties file to the target environment.
3. In the target environment, run the command for your operating system:
  - **UNIX.** `./hub_install.bin -f <absolute path to edited installer properties file>`
  - **Windows.** `hub_install.exe -f <absolute path to edited installer properties file>`

The silent installer runs in the background. The process can take a while.

4. If you chose to have the installer deploy the Process Server, check `postinstallSetup.log` to verify whether the installation was successful.

The log file is in the following directory:

```
<MDM Hub installation directory>/hub/server/logs
```

5. **Next step:** After the installation completes, the next step depends on whether you chose to deploy the Process Server.
  - If you chose to deploy the Process Server from the installer, you do not need to deploy the Process Server as part of the post-installation tasks.
  - If you chose to deploy the Process Server later, you must deploy the Process Server as part of the post-installation tasks.

## Install the Process Server on Nodes in the Cluster

In application server cluster environments, install the Process Server on all nodes of the cluster to which you must deploy the Process Server application. You must complete the installation on one node of a cluster before you proceed to install on another node of a cluster.

For example, a JBoss cluster has two nodes that run in `host1` and `host2` and use RMI ports 4447 and 4448. You need to install the Process Server on `node1` and `node2`. You must complete the Process Server installation on any one node, such as `node2`, before you start installation on the other node, `node1`.

Ensure that the directory structure of the Process Server installation is the same on all the nodes.

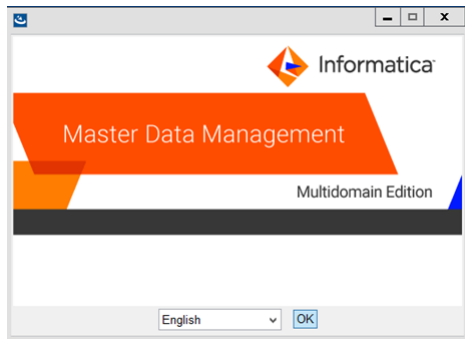
1. Start the JBoss application server on each cluster node.

2. Navigate to the following directory:  
`<MDM Hub distribution directory>/<operating system name>/mrmcleanse`
3. Navigate to the following directory:  
`<MDM Hub distribution directory>/<operating system name>/mrmcleanse`
4. To start the Process Server installer on a cluster node, run the command for your operating system:

**UNIX.** `./hub_cleanse_install.bin`

**Windows.** `hub_cleanse_install.exe`

The Process Server installation wizard starts.



5. Follow the online instructions. When prompted, enter the installation values that you collected.
6. **Next step:** After the installation completes, deploy the Process Server manually on all the nodes that have the installation.  
**Note:** If you performed an automatic deployment for the primary node, you do not need to manually deploy on the primary node.

## CHAPTER 7

# Process Server Post-Installation Tasks

This chapter includes the following topics:

- [Copy the Installation Log Files, 77](#)
- [Verify the Version and Build Number, 78](#)
- [Deploy the Process Server Application \(Conditional\), 78](#)
- [Enabling Secured Communications for Process Servers, 80](#)
- [Install and Configure Elasticsearch, 81](#)
- [Configure Match Population, 81](#)
- [Configuring the Process Server with Cleanse Engines, 81](#)

## Copy the Installation Log Files

The installation log files are useful for troubleshooting the Process Server installation process. Copy the log files to the installation documentation directory. Informatica Global Customer Support might request copies of the log files if you contact them regarding installation issues.

The following table describes the different types of installation log files:

Log File Type	Description
Installation log	<ul style="list-style-type: none"><li>- File name. Informatica_MDM_Cleanse_Match_Server_Install_&lt;timestamp&gt;.xml</li><li>- Location. &lt;MDM Hub installation directory&gt;/hub/cleanse/UninstallerData/Logs</li><li>- Contents. Directories created, names of the files installed and commands run, and status for each installed file.</li></ul>
Installation prerequisites log	<ul style="list-style-type: none"><li>- File name. installPrereq.log</li><li>- Location. &lt;MDM Hub installation directory&gt;/hub/cleanse/Logs</li><li>- Contents. Logs of prerequisite checks performed by the installer.</li></ul>
Debug log	<ul style="list-style-type: none"><li>- File name. infamdm_installer_debug.txt</li><li>- Location. &lt;MDM Hub installation directory&gt;/hub/cleanse/</li><li>- Contents. Detailed information about the choices that are made during installation and the actions performed by the installer.</li></ul>

Log File Type	Description
Post-installation setup log	<ul style="list-style-type: none"> <li>- File name. <code>postInstallSetup.log</code></li> <li>- Location. <code>&lt;MDM Hub installation directory&gt;/hub/cleanse/logs</code></li> <li>- Contents. Summary of actions performed by the installer during the post-installation process and the errors in the post-installation process.</li> </ul>
Process Server log	<ul style="list-style-type: none"> <li>- File name. <code>cmxserver.log</code></li> <li>- Location. <code>&lt;MDM Hub installation directory&gt;/hub/cleanse/logs</code></li> <li>- Contents. Summary of the Process Server operations.</li> </ul>
JBoss log	<ul style="list-style-type: none"> <li>- File name. <code>server.log</code></li> <li>- Location. <code>&lt;JBoss installation directory&gt;/standalone/log</code></li> <li>- Contents. Contains JBoss event logs and error messages.</li> </ul>

## Verify the Version and Build Number

Ensure that the correct version and build number of the Process Server is installed.

1. Open a command prompt, and navigate to the following directory: `<MDM Hub installation directory>/hub/cleanse/bin`
2. To verify the Process Server version and build number, run the following command:

On UNIX. `versionInfo.sh`

On Windows. `versionInfo.bat`

**Note:** For AIX systems, change the `versionInfo.sh` script to run Java from the `<Java home>/jre/bin` directory.

## Deploy the Process Server Application (Conditional)

If you have a scenario that requires deployment of the Process Server application, deploy the Process Server application.

You need to deploy the Process Server application in any of the following scenarios:

- The installation is in an application server multi-node environment or cluster environment.
- The installation completes, but the `postInstallSetup` script that you run during the installation fails.
- You skipped the `postInstallSetup` script during the installation.

Perform the following steps to deploy the Process Server application:

1. If the Process Server is not installed on the same application server instance as the Hub Server, create data sources.
2. Deploy the Process Server application `siperian-mrm-cleanse.ear`.

## Step 1. Creating Data Sources (Conditional)

If the Process Server is not deployed on the same application server instance as the Hub Server, configure the data sources for the application server.

To configure the application server to create data sources for the Process Server, perform the following tasks:

1. Copy the `<datasources>` definition for the MDM Hub Master Database and each Operational Reference Store from the `standalone-full.xml` file on the Hub Server machine to the `standalone-full.xml` file on the Process Server machine.

The `standalone-full.xml` file is in the following location:

```
<JBoss installation directory>/standalone/configuration
```

2. On the Process Server machine, add the following directory structure under `<JBoss installation directory>\modules:`

```
com\informatica\mdm\jdbc\main
```

3. On the Hub Server machine, copy the following files from `<JBoss installation directory>\modules:`

- `module.xml`
- Supported version of the JDBC drivers

4. On the Process Server machine, paste the copied files to the following directory: `<JBoss installation directory>\modules\com\informatica\mdm\jdbc\main.`

## Step 2. Deploying the Process Server Application (Conditional)

If the installation is in an application server multi-node environment or cluster environment, or the `postInstallSetup` script was skipped or fails, deploy the Process Server application.

Deploy the Process Server application on the same machine on which you installed the Process Server. The Process Server application must be able to find the Process Server installation associated with it. Therefore, do not copy the application EAR file for deployment on another machine. For example, you install the Process Server on a test machine, and then deploy the application on the production machine. The application that you deploy on the production machine cannot find the installation on the test machine.

Deploy the Process Server application by using one of the following procedures:

### Using a script for deployment

You run the `postInstallSetup` script to deploy the Process Server application.

### Manual deployment

You manually deploy the Process Server application.

## Using a Script for Deploying the Process Server Application (Conditional)

You can run the `PostInstallSetup` script to deploy the Process Server application.

**Important:** If the installation is in an application server multi-node or a cluster environment, first deploy the Process Server application on one node, and then deploy the Process Server application on the other nodes. Ensure that you deploy the Process Server application on the same machine on which you installed the Process Server.

1. Open a command prompt, and change to the following directory:

```
<MDM Hub installation directory>/hub/cleanse
```

2. Run the `PostInstallSetup` script.  
On UNIX. `./postInstallSetup.sh`  
On Windows. `postInstallSetup.bat`

## Manually Deploying the Process Server Application (Conditional)

You can manually deploy the Process Server application. You must deploy the Process Server application from the Process Server installation directory.

**Important:** If the installation is in an application server multi-node or a cluster environment, first deploy the Process Server application on one node, and then deploy the Process Server application on the other nodes. Ensure that you deploy the Process Server application on the same machine on which you installed the Process Server.

1. Stop the JBoss application server.
2. If you have an existing deployment, delete the `siperian-mrm-cleanse.ear` deployment file from the following JBoss deployment directory:  

```
<JBoss installation directory>\standalone\deployments
```
3. Copy the `siperian-mrm-cleanse.ear` deployment file from the Process Server installation directory to the JBoss deployment directory.
4. Start the JBoss application server.

For more information about deploying applications, see the JBoss documentation.

# Enabling Secured Communications for Process Servers

Each Process Server requires a signed certificate. Use the Hub Console to enable the HTTPS protocol and specify a secure port for each Process Server.

1. Create signed certificates for the Process Servers in the certificate store.
2. Ensure that the application server can access the certificate store.
3. Log in to the Hub Console.
4. Select an Operational Reference Store database.
5. Acquire a write lock.
6. In the **Utilities** workbench, select **Process Server**.
7. Select a Process Server and click the **Edit Process Server** icon.  
The Add/Edit Process Server dialog box opens.
8. Verify that the **Port** is a secure port.
9. Select the **Secured Connection (HTTPS)** check box.
10. Click **OK**.
11. Verify other Process Servers that appear in the list.



# Install and Configure Elasticsearch

To use search, install and setup Elasticsearch for the MDM Hub.

For more information about installing and configuring search, see the "Search with Elasticsearch" chapter in the *Multidomain MDM Configuration Guide*.

## Configure Match Population

The match population contains the standard population set to use for the match process. Each supported country, language, or population has a standard population set. You must enable the match population to use for the match rules.

The match population is available as a *population.ysp* file with the Informatica MDM Hub installation. The population name is the same as the ysp file name. If you add a Japanese population, and want to use the Person\_Name\_Kanji match field, add \_Kanji to the population name. For example, Japan\_Kanji or Japan\_i\_Kanji. If you do this, the standard Person\_Name match field is not available.

The population that you use must be compatible with the SSA-Name3 version of the MDM Hub. If you need additional population files or if you need an updated population file to upgrade to a later version, contact Informatica Global Customer Support. The first population file that you request with the product is free. You might need population files for other countries or you might need an updated population file to upgrade to a later version of the MDM Hub.

## Enabling Match Population

You must enable the match population to use for the match rules.

1. Copy the `<population>.ysp` files to the following location:  
On UNIX. `<infamdm_install_directory>/hub/cleanse/resources/match`  
On Windows. `<infamdm_install_directory>\hub\cleanse\resources\match`
2. In the C\_REPOS\_SSA\_POPULATION metadata table, verify that the population is registered.  
The seed database for the MDM Hub installation has some populations registered in the C\_REPOS\_SSA\_POPULATION table, but not enabled.
3. Restart the Process Server after you enable populations.
4. Log in to the Hub Console to verify that the population is enabled.  
The population appears in the **Match/Merge Setup** user interface for base objects.

## Configuring the Process Server with Cleanse Engines

After you install the Process Server, you can configure a cleanse engine with the Process Server.

For more information about cleanse engine configuration, see the *Multidomain MDM Cleanse Adapter Guide*.

## CHAPTER 8

# ActiveVOS Post-Installation Tasks for the Application Server

This chapter includes the following topics:

- [Edit the ActiveVOS Security Domain in JBoss, 82](#)
- [Create a Trusted User in JBoss Environments, 82](#)

## Edit the ActiveVOS Security Domain in JBoss

Enable container-based authentication in JBoss.

1. Open the `standalone-full.xml` file in the following directory:

```
<JBoss installation directory>/standalone/configuration
```

2. In the `security-domain name="ActiveVOS"` element, replace the `login-module` configuration with the following configuration:

```
<login-module code="RealmUsersRoles" flag="required">
  <module-option name="usersProperties" value="{jboss.server.config.dir}/
application-users.properties"/>
  <module-option name="rolesProperties" value="{jboss.server.config.dir}/
application-roles.properties"/>
  <module-option name="realm" value="ApplicationRealm"/>
  <module-option name="unauthenticatedIdentity" value="anonymous"/>
</login-module>
```

3. If the JBoss application server is running, restart the server.

## Create a Trusted User in JBoss Environments

To use the ActiveVOS workflow engine, create a trusted user with the role of `abTrust`, `abServiceConsumer`, and `abTaskClient` in the application server. The trusted user is trusted by MDM Hub and by ActiveVOS. The user facilitates secure communication between the MDM Hub and ActiveVOS.

The trusted user is the same user as the ActiveVOS workflow adapter user in the Hub Console. The name of the trusted user cannot be the same name as the application server administrative user.

1. From the command prompt, run `add-user.bat`.

- In UNIX. `<JBoss install director>/bin/add-user.sh`
- In Windows. `<JBoss install director>\bin\add-user.bat`

2. Answer the prompts that appear.

**Note:** The prompt displays the default value in brackets. Press **Enter** to use the default value and go to the next prompt.

**What type of user do you wish to add? a) Management User or b) Application User**

Enter `b` to select Application User.

**Realm (ApplicationRealm)**

Enter the same realm name that you specified in the `login-module` that you added to the `standalone-full.xml` file.

**Username**

Enter the user name of the trusted user.

**Password**

Enter a password that complies with the JBoss password standard.

**What roles do you want this user to belong to?**

Enter `abTrust,abServiceConsumer,abTaskClient`.

**About to add user <username> for realm <realmname>. Is this correct?**

To add the user, enter `yes`.

**Is this new user going to be used for one AS process to connect to another AS process?**

Enter `yes`.

3. Restart the application server.

## CHAPTER 9

# ActiveVOS Post-Installation Tasks for the Business Entity Adapter

This chapter includes the following topics:

- [ActiveVOS Web Applications, 84](#)
- [Configuring the ActiveVOS URNs for the Business Entity Workflow Adapter, 85](#)
- [Set the ActiveVOS Protocol to HTTPS, 85](#)
- [Configure the Primary Workflow Engine, 86](#)
- [Configure the MDM Identity Services for ActiveVOS, 86](#)
- [Configure Tasks, 87](#)

## ActiveVOS Web Applications

When you install the bundled, licensed version of the ActiveVOS Server, you are also licensed to use two ActiveVOS web applications. After you add users to the application server container, you can use these applications.

You use the web applications for different purposes:

### **ActiveVOS Console**

Administrators use the ActiveVOS Console to manage deployed processes, the alerting system, and endpoint locations. You can also configure the engine for performance monitoring and management.

### **ActiveVOS Central**

Business users can use ActiveVOS Central to manage tasks, requests, and reports. However, in general, business users use an Data Director (IDD) application to manage tasks because they can open the entities to review from the Task Manager.

To use ActiveVOS Central, you must add the MDM Hub users to the application server container.

For more information about the web applications, see the Informatica ActiveVOS documentation.

# Configuring the ActiveVOS URNs for the Business Entity Workflow Adapter

The ActiveVOS Server has two predefined uniform resource names (URNs) that it uses internally. You need to update the URL in the URN mappings to use the host name and the port number where the ActiveVOS Server runs.

1. Launch the ActiveVOS Console. In a browser, type the following URL, substituting the correct host name and port number:

Encrypted connections. `https://[host]:[port]/activevos`

Non-encrypted connections. `http://[host]:[port]/activevos`

2. In the ActiveVOS Console, on the Home page, click **Administration > Configure Server > URN Mappings**.
3. For the following URNs, update the paths to reflect the host name and port number of the ActiveVOS Server:

URN	URL Path
ae:internal-reporting	Encrypted connections. <code>https://[host]:[port]/activevos/internalreports</code> Non-encrypted connections. <code>http://[host]:[port]/activevos/internalreports</code>
ae:task-inbox	Encrypted connections. <code>https://[host]:[port]/activevos-central/avc</code> Non-encrypted connections. <code>http://[host]:[port]/activevos-central/avc</code>

4. Verify that **urn:mdm:service** is mapped to the host name and port number of the MDM Hub Server:

Encrypted connections. `https://[host]:[port]/cmx/services/BEServices`

Non-encrypted connections. `http://[host]:[port]/cmx/services/BEServices`

## Set the ActiveVOS Protocol to HTTPS

To enable secure communication between ActiveVOS and the MDM Hub, set the protocol to HTTPS in the Hub Console Workflow Manager.

You must first configure the application server for HTTPS communications.

1. Start the Hub Console.
2. Acquire a write lock.
3. Click **Workflow Manager** under the Configuration workbench.
4. In the Workflow Manager, click the **Workflow Engines** tab.
5. Select the ActiveVOS workflow engine, and then click the **Edit** button.
6. In the Edit Workflow dialog box, set the protocol to HTTPS.
7. In a WebLogic environment, in the Edit Workflow dialog box, enter the user name and password of the user that belongs to the abAdmin role.

# Configure the Primary Workflow Engine

To configure the primary workflow engine, add a workflow engine for ActiveVOS workflows based on business entities. The secondary workflow engine is for existing customers who want to process existing tasks with a deprecated workflow engine.

1. In the Hub Console, click **Workflow Manager** in the Configuration workbench.
2. Acquire a write lock.
3. Select the **Workflow Engines** tab and click the **Add** button.
4. In the **Add Workflow** dialog box, enter the workflow engine properties.

The following table describes the workflow engine properties:

Field	Description
Workflow Engine	The display name of the workflow engine
Adapter Name	Select <b>BE ActiveVOS</b> for the ActiveVOS workflow adapter based on business entities.
Host	The host name of the Informatica ActiveVOS instance.
Port	The port name of the Informatica ActiveVOS instance.
Username	The user name of the trusted user.
Password	The password of the trusted user.
Protocol	The protocol for communication between the MDM Hub and ActiveVOS. The protocol can be http or https.

5. Click **OK**.

# Configure the MDM Identity Services for ActiveVOS

If you use embedded ActiveVOS, ensure that you configure ActiveVOS to use MDM Identity Services. To configure the MDM Identity Services for ActiveVOS, use the ActiveVOS Console to set the Identity Services password to the password of the MDM Hub workflow engine user.

1. In the ActiveVOS console, select **Admin > Configure Services > Identity Services**.
2. In the Provider Configuration section, enable the **Enable** check box and select **MDM** from the **Provider Type** list.
3. In the Connection tab, enter the password of the MDM Hub user with the user name `admin`.  
**Note:** If you later change the password for the admin user, you must enter the new password in the ActiveVOS identity services settings.
4. Click **Update**.

5. Test that ActiveVOS can log in to the MDM Hub as the `admin` user, and that ActiveVOS can retrieve a list of roles for the user you specify as the **User for test**.
  - a. Select the **Test** tab.
  - b. In the **User for test** field, enter an MDM Hub user that is assigned to a role.
  - c. Click **Test Settings**.

**Note:** The test fails if an Operational Reference Store is not configured, the user for test does not belong to a role, or the role name contains spaces.

## Configure Tasks

Before you begin using task workflows in Informatica Data Director, configure task templates, task triggers, and task types in the Provisioning tool.

For more information, see the *Multidomain MDM Provisioning Tool Guide*.

# CHAPTER 10

## Customize ActiveVOS

You can customize the ActiveVOS installation by configuring the ActiveVOS properties in the `build.properties` file. The properties have a default value. You do not need to set them unless the default value does not work in your environment.

The following table describes the ActiveVOS properties that you can configure:

Property	Description
<code>activevos.install.console</code>	Controls if the ActiveVOS console is deployed in the server. Default is true. If set to false, ActiveVOS Console is not installed.
<code>activevos.secure.https.only</code>	Forces and redirects all ActiveVOS HTTP traffic to HTTPS. Default is false

## Adding ActiveVOS Properties

To enable the ActiveVOS properties, you must add the properties to the `build.properties` file in hub console and run the post-install script run again for the changes to take place.

1. Open the following `build.properties` directory in a text editor:  
`<MDM Hub installation directory>\hub\server\bin\build.properties`
2. Add the ActiveVOS properties to the `build.properties` directory.
3. Open a command prompt.
4. Navigate to the `PostInstallSetup` script in the following directory:
  - On Unix. `<MDM Hub installation directory>/hub/cleanse`
  - On Windows. `<MDM Hub installation directory>\hub\cleanse`
5. Run the `PostInstallSetup` script:
  - On Unix. `postinstallsetup.sh`
  - On Windows. `postinstallsetup.bat`
6. Restart the application server.



# CHAPTER 11

## Troubleshooting the MDM Hub

This chapter includes the following topic:

- [Troubleshooting the Installation Process, 89](#)

### Troubleshooting the Installation Process

If the installation fails, use the following information to troubleshoot the failure.

#### Cannot launch the Hub Console

After installation, the Hub Console fails to launch and generates the following error in the log file:

```
SIP-09131: General Decryption failure and [ERROR] com.delos.util.StringUtil: Unable to decrypt
```

Encrypt and update the MDM Hub Master Database password or Operational Reference Store password.

1. To encrypt a database schema password, run the following command from a command prompt:

```
java -classpath siperian-api.jar;siperian-common.jar;siperian-server.jar  
com.delos.util.PublicKeyBasedEncryptionHelper <plain text password> <Hub Server  
installation directory>
```

The results are echoed to the terminal window.

2. To update your Master Database password or Operational Reference Store password, connect as the `cmx_system` user and run the following statement:

```
UPDATE C_REPOS_DATABASE SET PASSWORD = '<new_password>' WHERE USER_NAME =  
<user_name>;  
COMMIT;
```

3. Run the `postInstallSetup` script.

#### Hub Server EAR file deployment fails with `concurrent.RejectedExecutionException`

The Hub Server EAR file deployment might fail with the exception

`concurrent.RejectedExecutionException`.

To resolve the issue, increase the length of the task queue in the `standalone-full.xml` file.

The following sample shows the `queue-length count` parameter to modify:

```
<long-running-threads>  
  <core-threads count="50"/>  
  <queue-length count="300"/>  
  <max-threads count="50"/>  
  <keepalive-time time="10" unit="seconds"/>  
</long-running-threads>
```

## Cannot start JBoss or launch the Hub Console after installation

After installation, JBoss might not restart after you stop JBoss. When you launch the Hub Console, the Hub Console fails to launch and generates the following error:

```
SIP-09070: Failed to initialize repository layer.
```

To resolve the issue, run the following code in a batch file to restart JBoss:

```
rmdir C:\<JBoss installation directory>\standalone\tmp /s /q
\mkdir C:\<JBoss installation directory>\standalone\tmp
C:\<JBoss installation directory>\bin\standalone.bat -c standalone-full.xml -b 0.0.0.0
```

## MDM Hub users cannot login

If you re-create the CMX\_SYSTEM schema after installation of the Hub Server, the MDM Hub cannot recognize the hashed passwords. As a result, users cannot log in to the MDM Hub.

To resolve the issue, run the `postInstallSetup` script again manually. This script ensures that the passwords of the MDM Hub users are hashed again and users can log in.

Alternatively, if you do not want to run the `postInstallSetup` script again, run the following commands to migrate the user passwords to hashed passwords and create application users.

On UNIX.

```
cd <MDM Hub installation directory>/server/bin
./sip_ant.sh hash_users_passwords
./sip_ant.sh add_application_users
```

On Windows.

```
cd <MDM Hub installation directory>\server\bin
sip_ant.bat hash_users_passwords
sip_ant.bat add_application_users
```

## PostInstallSetUp script fails because the ActiveVOS server deployment times out

When you install the Hub Server, the post-installation setup process might fail after trying to deploy the ActiveVOS server.

To resolve the issue, increase the value of the `deploy.wait.time` property in the `build.properties` file in the following directory:

On UNIX. <infamdm installation directory>/hub/server/bin

On Windows. <infamdm installation directory>\hub\server\bin

## Operational Reference Store registration fails because the connection times out

When you register the Operational Reference Store (ORS) in a JBoss cluster node, the ORS registration fails with a connection timeout error similar to the following:

```
SIP-10313: SIP-09061: Failed connecting with provider url abc03.
java.net.ConnectException: JBAS012144: Could not connect to remote://abc03:9999. The
connection timed out.
```

To resolve the issue, when you register an ORS, disable the JBoss administrative security, and then enable the JBoss administrative security after ORS registration.

## Hub Server deployment fails because JBoss composite operation fails

When you deploy the Hub Server in the JBoss application server, the Hub Server deployment fails with the following error:

```
JBAS014653: Composite operation failed and was rolled back. Steps that failed:" =>
{"Operation step-2" => {
  "JBAS014671: Failed services" => {"jboss.web.deployment.default-host./cmx"
```

```
=> "org.jboss.msc.service.StartException in service jboss.web.deployment.default-host./
cmx:
    org.jboss.msc.service.StartException in anonymous service: JBAS018040:
Failed to start context
Caused by: org.jboss.msc.service.StartException in anonymous service: JBAS018040: Failed
to start context"
```

To resolve the issue, perform the following steps:

1. Stop the JBoss application server.
2. Use a text editor to open the `standalone.xml` file in the following directory:  
On UNIX. `<JBoss Installation Directory>/standalone/configuration`  
On Windows. `<JBoss Installation Directory>\standalone\configuration`

3. Find the following code:

```
<subsystem xmlns="urn:jboss:domain:deployment-scanner:1.1">
  <deployment-scanner path="deployments" relative-to="jboss.server.base.dir"
scan-interval="5000"/>
</subsystem>
```

4. Add the `deployment-timeout="300"` attribute as shown in the following sample code:

```
<subsystem xmlns="urn:jboss:domain:deployment-scanner:1.1">
  <deployment-scanner path="deployments" relative-to="jboss.server.base.dir"
scan-interval="5000" deployment-timeout="300"/>
</subsystem>
```

5. Save changes, and start the JBoss application server.  
The default deployment timeout value is 60, which is changed to 300.
6. Deploy the Hub Server.

### The Hub Server cannot connect to the `cmx_system` schema

To verify that the Hub Server cannot connect to the `cmx_system` schema, review the application server log.

To resolve the issue, resolve the database connection issue. Use the application server console to test the connection to the database. If you cannot resolve the connection to the `cmx_system` schema, re-create the `cmx_system` schema.

### Failed to verify the need to tokenize records

When you run the match process, you might receive the following error:

```
SIP-16062: Failed to verify the need to tokenize records.
```

Verify the following environment variable settings:

- The library path environment variable must contain the following path:

On UNIX. `<infadm_install_directory>/hub/cleanse/lib`

On Windows. `<infadm_install_directory>\hub\cleanse\lib`

The library path environment variable depends on the operating system:

- AIX. `LIBPATH`
- Suse or RedHat Linux. `LD_LIBRARY_PATH`
- Windows. `PATH`

- The `SSAPR` environment variable must include the following path for all users:

On UNIX. `<infadm_install_directory>/server_install_dir/cleanse/resources`

On Windows. `<infadm_install_directory>\server_install_dir\cleanse\resources`

## major.minor version errors when loading the Process Server

If you see multiple `major.minor` console errors when you try to load the Process Server, check that the system has the correct Java version installed.

### Java XA Exception

When you restart JBoss after you have installed the Hub Server, the following exception might appear:

```
WARN [com.arjuna.ats.jta] (Periodic Recovery) ARJUNA016027: Local
XARecoveryModule.xaRecovery got XA exception XAException.XAER_RMERR:
javax.transaction.xa.XAException
at oracle.jdbc.xa.OracleXAResource.recover(OracleXAResource.java:730)
at
org.jboss.jca.adapters.jdbc.xa.XAManagedConnection.recover(XAManagedConnection.java:362)
at
org.jboss.jca.core.tx.jbossts.XAResourceWrapperImpl.recover(XAResourceWrapperImpl.java:185)
at
com.arjuna.ats.internal.jta.recovery.arjunacore.XARecoveryModule.xaRecoveryFirstPass(XARecoveryModule.java:597)
at
com.arjuna.ats.internal.jta.recovery.arjunacore.XARecoveryModule.periodicWorkFirstPass(XARecoveryModule.java:194)
at
com.arjuna.ats.internal.jta.recovery.arjunacore.XARecoveryModule.periodicWorkFirstPass(XARecoveryModule.java:140)
at
com.arjuna.ats.internal.arjuna.recovery.PeriodicRecovery.doWorkInternal(PeriodicRecovery.java:765)
at
com.arjuna.ats.internal.arjuna.recovery.PeriodicRecovery.run(PeriodicRecovery.java:377)
```

The exception occurs if you run the `sip_ant` script and do not have access to the Oracle database SYS account. The script performs grants on the Oracle system tables that require the SYS user account privilege. Without access to the SYS account, you cannot set up the `cmx_system` or `cmx_ors` schema.

You can create a privileged account associated with the DBA role. The DBA user can perform the grant statements manually, outside of the `sip_ant` script. Alternatively, to avoid the XA exception error in the log, grant the SELECT and EXECUTE privileges to the `cmx_system` and `cmx_ors` users:

```
GRANT EXECUTE ON sys.dbms_lock TO <DBA user> with grant option;
```

When you run the `sip_ant` script to create the MDM Hub Master Database (`cmx_system`) or an Operational Reference Store (`cmx_ors`), the following error might appear:

```
[exec] GRANT SELECT ON SYS.PENDING_TRANS$ TO cmx_system
[exec] DBA user should have grantable privilege for PENDING_TRANS$
[exec] ERROR CODE: -1031
[exec] DECLARE
[exec] *
[exec] ERROR at line 1:
[exec] ORA-01031: insufficient privileges
[exec] ORA-06512: at line 24
[exec] ORA-06512: at line 27
```

Grant the required privileges to the SYS user, so that the user can run the `create_system` and `create_ors` ant as targets:

```
GRANT SELECT ON sys.pending_trans$ TO <DBA user> with grant option;
GRANT SELECT ON sys.dba_pending_transactions TO <DBA user> with grant option;
GRANT SELECT ON sys.dba_2pc_pending TO <DBA user> with grant option;
GRANT EXECUTE ON sys.dbms_xa TO <DBA user> with grant option;
```

## Informatica Address Verification exception during certification

Informatica Address Verification generates an exception during certification. Ensure that the stack size for the JVM is sufficient.

1. Navigate to the bin directory under the JBoss root directory.
2. Open the following file in a text editor.  
On UNIX. `run.sh`  
On Windows. `run.bat`
3. Set the `JAVA_OPTS` variable as follows:  

```
JAVA_OPTS=${JAVA_OPTS} -Xss2000k
```
4. Save and close the file.

## Operational Reference Store does not have a workflow engine configured

If you install the MDM Hub and then import an Operational Reference Store (ORS) from a previous version, you see a fatal error that indicates that the ORS does not have a workflow engine configured. This error occurs because the Siperian BPM workflow engine is not registered by default. Use the Workflow Manager to register the Siperian BPM workflow engine with the name that the ORS expects to find.

## After you deploy the Process Server .ear files, an error occurs

On a Linux environment with WebSphere 8.5.5.9, after you deploy the Process Server, the following error occurs:

```
Too many open files. Unable to start cleanse ear.
```

Increase the value of the `ulimit` parameter in Linux, and deploy the Process Server.

## Cannot add the application users using the `sip_ant` script

The following applications are affected: Business Process Manager (formerly known as ActiveVOS), Data Director, MDM Hub Console and Provisioning Tool.

To add the application users, run the `sip_ant` command, using the `add_app_users` parameter.

You can fetch the connect URL from the following location:

```
hub/server/bin/build.properties (masterdatabase.jdbc.url)
```

Run the following command:

- On Windows.

```
sip_ant.bat add_app_users -Ddatabase.password=<cmx system password> -Dmaster.  
connecturl="jdbc:oracle:thin:@<Database Host name>:<DB Port>:<SID>" -  
Dmaster.username=cmx_system
```

- On Unix.

```
./sip_ant.sh add_app_users -Ddatabase.password=<cmx system password> -Dmaster.  
connecturl="jdbc:oracle:thin:@//<Database Host name>:<DB Port>:<SID>" -  
Dmaster.username=cmx_system
```

Run the following command on the SQL Server:

```
./sip_ant.sh add_app_users -Ddatabase.password=<cmx system password> -  
Dmaster.connecturl="jdbc:sqlserver://<Database Host Name>:<DB  
Port>;DatabaseName=cmx_system" -Dmaster.username=cmx_system
```

## The Certificates folder is not created

The Certificates folder is not created as expected, after you back up the existing Certificates folder from `\infamdm\hub\server\resources\`, and run the `sip_ant.sh hash_users_passwords` script. This issue occurs when the `sip_ant.sh hash_users_passwords` script updates the `C_REPOS_USER` table in `cmx_system`.

To resolve this issue, restart the application server. As a result, the Certificates folder is created in the expected location: `\infamdm\hub\server\resources\`.

The folder will contain only the `MDM_KEYSTORE_FILE_JKS` keystore.

To generate other certificates, run the following command:

```
./sip_ant.sh add_app_users
```

# CHAPTER 12

## Uninstallation

This chapter includes the following topics:

- [Uninstallation Overview, 95](#)
- [Uninstalling the Hub Store, 95](#)
- [Uninstalling the Process Server in Graphical Mode, 96](#)
- [Uninstalling the Hub Server in Graphical Mode, 97](#)
- [Uninstalling the Process Server in Console Mode, 97](#)
- [Uninstalling the Hub Server in Console Mode, 98](#)
- [Manually Undeploying the Process Server, 98](#)
- [Manually Undeploying the Hub Server, 98](#)

## Uninstallation Overview

To uninstall the MDM Hub, you need to remove the Process Server, the Hub Server, and the Hub Store from the MDM Hub implementation.

Use the following steps to uninstall the MDM Hub:

1. Uninstall the Hub Store.
2. Uninstall the Process Server.
3. Uninstall the Hub Server.

## Uninstalling the Hub Store

You can uninstall the Hub Store by dropping the Hub Store schemas and removing the user logins for the Hub Store schemas. Before you drop the Hub Store schemas, use the Hub Console to unregister the Hub Store schemas.

You must have administrator privileges to drop the Hub Store schemas.

1. Start the Hub Console.
2. Click the **Databases** tool under the **Configuration** workbench.  
The **Database Information** page appears.

3. Click **Write Lock > Acquire Lock**.
4. From the list of databases, select the Operational Reference Store to unregister.
5. Click the **Unregister database** button.  
The Databases tool prompts you to confirm unregistering the Operational Reference Store.
6. Click **Yes**.
7. Use the command line processor to connect to the IBM Db2 instance.
8. Use the following command for each Hub Store schema to drop the schema:

```
DROP TABLE ERRORSHEMA.ERRORTABLE
CALL SYSPROC.ADMIN_DROP_SCHEMA('<Schema Name>', NULL, 'ERRORSCHEMA', 'ERRORTABLE')
```

## Uninstalling the Process Server in Graphical Mode

You can uninstall the Process Server in graphical mode.

### Uninstalling the Process Server in Graphical Mode On UNIX

To uninstall the MDM Hub, you must remove the Process Server. You must perform the steps to uninstall the Process Server for each Process Server in the MDM Hub implementation.

1. Stop the application server.
2. Navigate to the following directory:  
`<infamdm_install_directory>/hub/cleanse/UninstallerData`
3. Run the uninstaller.  
`./"Uninstall Informatica MDM Hub Cleanse Match Server"`
4. Click **Uninstall**.  
When the uninstallation process is complete, the Uninstall Complete window appears.
5. Click **Done**.

### Uninstalling the Process Server in Graphical Mode On Windows

To uninstall the MDM Hub, you must remove the Process Server. You must perform the steps to uninstall the Process Server for each Process Server in the MDM Hub implementation.

1. Stop the application server.
2. Click **Start** and then click **Programs > Infamdm > Hub > Cleanse > Uninstaller Data > Uninstall Informatica MDM Hub Cleanse Match Server**.  
The Uninstall introduction window appears.
3. Click **Uninstall**.  
When the uninstallation process is complete, the Uninstall Complete window appears.
4. Click **Done**.



# Uninstalling the Hub Server in Graphical Mode

You can uninstall the Hub Server in graphical mode.

## Uninstalling the Hub Server in Graphical Mode on UNIX

To uninstall the MDM Hub, you must remove the Hub Server from the MDM Hub implementation.

1. Ensure that you stop the application server.

2. Navigate to the following directory:

```
<infamdm_install_directory>/hub/server/UninstallerData
```

3. Run the uninstaller.

```
./"Uninstall Informatica MDM Hub Server"
```

The Uninstall introduction window appears.

4. Click **Uninstall**.

When the uninstallation process is complete, the Uninstall Complete window appears.

5. Click **Done**.

## Uninstalling the Hub Server in Graphical Mode on Windows

To uninstall the MDM Hub, you must remove the Hub Server from the MDM Hub implementation.

1. Ensure that you stop the application server.

2. Click **Start** and then click **Programs > Infamdm > Hub > Server > UninstallerData > Uninstall Informatica MDM Hub Server**.

The Uninstall introduction window appears.

3. Click **Uninstall**.

When the uninstallation process is complete, the Uninstall Complete window appears.

4. Click **Done**.

# Uninstalling the Process Server in Console Mode

You can uninstall the Process Server in console mode on UNIX. If you installed the Process Server in console mode, uninstall the Process Server in console mode.

1. Go to the following directory:

```
<infamdm_install_dir>/hub/cleanse/UninstallerData
```

2. Type the following command to run the uninstaller:

```
./"Uninstall Informatica MDM Hub Cleanse Match Server"
```

# Uninstalling the Hub Server in Console Mode

You can uninstall the Hub Server in console mode on UNIX. If you installed the Hub Server in console mode, uninstall the Hub Server in console mode.

1. Go to the following directory:  
`<infamdm_install_dir>/hub/server/UninstallerData`
2. Type the following command to run the uninstaller:  
`./"Uninstall Informatica MDM Hub Server"`

# Manually Undeploying the Process Server

You might need to manually undeploy the Process Server from the JBoss application server.

1. To manually undeploy the Process Server, delete `siperian-mrm-cleanse.ear` from the following directory:  
On UNIX. `<JBoss_install_dir>/standalone/deployments`  
On Windows. `<JBoss_install_dir>\standalone\deployments`
2. Restart the JBoss application server if the JBoss auto-deploy process does not remove the application.  
For more information, see the JBoss documentation.

# Manually Undeploying the Hub Server

You might need to manually undeploy the Hub Server from the JBoss application server.

1. Remove the following deployment files from the JBoss deployment directory:

Deployment File Name	Description
<code>siperian-mrm.ear</code>	Required. The Hub Server application.
<code>entity360view-ear.ear</code>	Optional. The Entity 360 framework.

The deployment files are in the following directory:

On UNIX.

- `<JBoss installation directory>/<configuration name>/deployments`

On Windows.

- `<JBoss installation directory>\<configuration name>\deployments`

2. Restart the JBoss application server if the JBoss auto-deploy process does not remove the application.  
For more information, see the JBoss documentation.

# INDEX

## A

ActiveVOS  
URN, setting [85](#)  
ActiveVOS Console administrative user  
abAdmin role [27](#)  
creating [27](#)

## C

configuring IBM Db2  
for the MDM Hub [16](#)  
configuring JBoss  
for the MDM Hub [22](#)  
configuring server properties [26](#)  
configuring the full profile [26](#)

## D

database  
create manually [17](#)  
databases  
target database [62](#)

## H

HTTPS  
for Process Servers [80](#)  
Hub Console  
starting [58](#), [62](#)  
Hub Console client  
build.properties  
configuring [49](#)  
cluster environment [49](#)  
configuring [49](#)  
multi-node environment [49](#)  
Hub Server  
build number [48](#)  
deploying on JBoss cluster [45](#)  
deployment [51](#)  
deployment script [51](#)  
install from command line [44](#)  
install silently [45](#)  
install with wizard [43](#)  
installation log files [48](#)  
manual deployment [51](#), [53](#)  
manually deploying [58](#)  
manually redeploying [58](#)  
postInstallSetup script [52](#)  
uninstalling [98](#)  
version information [48](#)  
Hub Server properties file  
configuring [29](#)

Hub Store  
tablespaces, creating [16](#)  
uninstalling [95](#)

## I

Infinispan  
configuring [61](#), [62](#)  
Informatica ActiveVOS  
creating the schema [21](#)  
installer  
workflow [38](#), [70](#)  
installing  
Hub Server  
command line [44](#)  
silently [45](#)  
wizard [43](#)  
Process Server  
command line [74](#)  
silently [75](#)  
wizard [73](#)

## J

JBoss  
settings [50](#)  
starting on JBoss cluster nodes [29](#)  
starting on standalone JBoss instances [28](#)  
JBoss cluster  
deploying Hub Server [45](#)  
deploying Process Server [75](#)  
JBoss security  
enabling [66](#)  
JBoss starting on cluster nodes  
starting on standalone instances [28](#)  
JMS message queues  
configuring [55](#), [58](#)

## L

log file  
debug log file [48](#), [77](#)  
Hub Server log file [48](#)  
installation log file [48](#), [77](#)  
installation prerequisites log file [48](#), [77](#)  
JBoss log file [48](#), [77](#)  
post install setup log file [48](#), [77](#)  
Process Server log file [77](#)

## M

- Master Database
  - creating [31](#)
  - importing metadata [34](#)
- match population
  - enabling [81](#)
- MDM Hub
  - components [9](#)
  - designing the installation [12](#)
  - installation tasks [12](#)
  - installation topology [12](#)
  - introduction [9](#)
  - Java Development Kit (JDK) requirement [14](#)
  - setting environment variables [14](#)
  - setting operating system locale [14](#)
  - system requirements [14](#)

## O

- Operational Reference Store
  - creating [33](#)
  - importing metadata [35](#)
  - registering [63](#)

## P

- postinstallsetup script
  - running [79](#)
- postInstallSetup script
  - for Hub Server [52](#)
  - for Process Server [79](#)
  - running [52](#)
- Process Server
  - build number [78](#)
  - create data sources [78](#)
  - deploying [79, 80](#)
  - deploying on JBoss cluster [75](#)
  - deployment [78, 79](#)
  - deployment script [78, 79](#)
  - install from command line [74](#)
  - install silently [75](#)
  - install with wizard [73](#)
  - installation log files [77](#)
  - manual deployment [78, 79](#)
  - postInstallSetup script [79](#)

- Process Server (*continued*)
  - uninstalling [97](#)
  - version information [78](#)
- Process Server properties file
  - configuring [30](#)
- Process Servers
  - HTTPS, enabling [80](#)

## R

- remoting-connector security
  - enabling [66](#)

## S

- secure communications
  - enabling, in the Process Server [80](#)

## T

- tablespaces
  - creating [16](#)
- target database
  - selecting [62](#)
- TLS
  - configure [27](#)
- troubleshooting
  - post-installation process [89](#)

## U

- uninstalling
  - Hub Server [98](#)
  - Hub Store [95](#)
  - Process Server [97](#)
- URN
  - setting ActiveVOS [85](#)

## W

- workflow engines
  - adding [86](#)