



Informatica® Dynamic Data Masking
9.8.1

Stored Procedure Accelerator Guide for Sybase

© Copyright Informatica LLC 1993, 2018

This software and documentation contain proprietary information of Informatica LLC and are provided under a license agreement containing restrictions on use and disclosure and are also protected by copyright law. Reverse engineering of the software is prohibited. No part of this document may be reproduced or transmitted in any form, by any means (electronic, photocopying, recording or otherwise) without prior consent of Informatica LLC. This Software may be protected by U.S. and/or international Patents and other Patents Pending.

Use, duplication, or disclosure of the Software by the U.S. Government is subject to the restrictions set forth in the applicable software license agreement and as provided in DFARS 227.7202-1(a) and 227.7702-3(a) (1995), DFARS 252.227-7013(1)(ii) (OCT 1988), FAR 12.212(a) (1995), FAR 52.227-19, or FAR 52.227-14 (ALT III), as applicable.

The information in this product or documentation is subject to change without notice. If you find any problems in this product or documentation, please report them to us in writing.

Informatica, Informatica Platform, Informatica Data Services, PowerCenter, PowerCenterRT, PowerCenter Connect, PowerCenter Data Analyzer, PowerExchange, PowerMart, Metadata Manager, Informatica Data Quality, Informatica Data Explorer, Informatica B2B Data Transformation, Informatica B2B Data Exchange Informatica On Demand, Informatica Identity Resolution, Informatica Application Information Lifecycle Management, Informatica Complex Event Processing, Ultra Messaging, Informatica Master Data Management, and Live Data Map are trademarks or registered trademarks of Informatica LLC in the United States and in jurisdictions throughout the world. All other company and product names may be trade names or trademarks of their respective owners.

Portions of this software and/or documentation are subject to copyright held by third parties, including without limitation: Copyright DataDirect Technologies. All rights reserved. Copyright © Sun Microsystems. All rights reserved. Copyright © RSA Security Inc. All Rights Reserved. Copyright © Ordinal Technology Corp. All rights reserved. Copyright © Aandacht c.v. All rights reserved. Copyright Genivia, Inc. All rights reserved. Copyright Isomorphic Software. All rights reserved. Copyright © Meta Integration Technology, Inc. All rights reserved. Copyright © Intalio. All rights reserved. Copyright © Oracle. All rights reserved. Copyright © Adobe Systems Incorporated. All rights reserved. Copyright © DataArt, Inc. All rights reserved. Copyright © ComponentSource. All rights reserved. Copyright © Microsoft Corporation. All rights reserved. Copyright © Rogue Wave Software, Inc. All rights reserved. Copyright © Teradata Corporation. All rights reserved. Copyright © Yahoo! Inc. All rights reserved. Copyright © Glyph & Cog, LLC. All rights reserved. Copyright © Thinkmap, Inc. All rights reserved. Copyright © Clearpace Software Limited. All rights reserved. Copyright © Information Builders, Inc. All rights reserved. Copyright © OSS Nokalva, Inc. All rights reserved. Copyright Edifecs, Inc. All rights reserved. Copyright Cleo Communications, Inc. All rights reserved. Copyright © International Organization for Standardization 1986. All rights reserved. Copyright © ej-technologies GmbH. All rights reserved. Copyright © Jaspersoft Corporation. All rights reserved. Copyright © International Business Machines Corporation. All rights reserved. Copyright © yWorks GmbH. All rights reserved. Copyright © Lucent Technologies. All rights reserved. Copyright (c) University of Toronto. All rights reserved. Copyright © Daniel Veillard. All rights reserved. Copyright © Unicode, Inc. Copyright IBM Corp. All rights reserved. Copyright © MicroQuill Software Publishing, Inc. All rights reserved. Copyright © PassMark Software Pty Ltd. All rights reserved. Copyright © LogiXML, Inc. All rights reserved. Copyright © 2003-2010 Lorenzi Davide, All rights reserved. Copyright © Red Hat, Inc. All rights reserved. Copyright © The Board of Trustees of the Leland Stanford Junior University. All rights reserved. Copyright © EMC Corporation. All rights reserved. Copyright © Flexera Software. All rights reserved. Copyright © Jinfonet Software. All rights reserved. Copyright © Apple Inc. All rights reserved. Copyright © Telerik Inc. All rights reserved. Copyright © BEA Systems. All rights reserved. Copyright © PDFlib GmbH. All rights reserved. Copyright © Orientation in Objects GmbH. All rights reserved. Copyright © Tanuki Software, Ltd. All rights reserved. Copyright © Ricebridge. All rights reserved. Copyright © Sencha, Inc. All rights reserved. Copyright © Scalable Systems, Inc. All rights reserved. Copyright © jqWidgets. All rights reserved. Copyright © Tableau Software, Inc. All rights reserved. Copyright © MaxMind, Inc. All Rights Reserved. Copyright © TMate Software s.r.o. All rights reserved. Copyright © MapR Technologies Inc. All rights reserved. Copyright © Amazon Corporate LLC. All rights reserved. Copyright © Highsoft. All rights reserved. Copyright © Python Software Foundation. All rights reserved. Copyright © BeOpen.com. All rights reserved. Copyright © CNRI. All rights reserved.

This product includes software developed by the Apache Software Foundation (<http://www.apache.org/>), and/or other software which is licensed under various versions of the Apache License (the "License"). You may obtain a copy of these Licenses at <http://www.apache.org/licenses/>. Unless required by applicable law or agreed to in writing, software distributed under these Licenses is distributed on an "AS IS" BASIS, WITHOUT WARRANTIES OR CONDITIONS OF ANY KIND, either express or implied. See the Licenses for the specific language governing permissions and limitations under the Licenses.

This product includes software which was developed by Mozilla (<http://www.mozilla.org/>), software copyright The JBoss Group, LLC, all rights reserved; software copyright © 1999-2006 by Bruno Lowagie and Paulo Soares and other software which is licensed under various versions of the GNU Lesser General Public License Agreement, which may be found at <http://www.gnu.org/licenses/lgpl.html>. The materials are provided free of charge by Informatica, "as-is", without warranty of any kind, either express or implied, including but not limited to the implied warranties of merchantability and fitness for a particular purpose.

The product includes ACE(TM) and TAO(TM) software copyrighted by Douglas C. Schmidt and his research group at Washington University, University of California, Irvine, and Vanderbilt University, Copyright (©) 1993-2006, all rights reserved.

This product includes software developed by the OpenSSL Project for use in the OpenSSL Toolkit (copyright The OpenSSL Project. All Rights Reserved) and redistribution of this software is subject to terms available at <http://www.openssl.org> and <http://www.openssl.org/source/license.html>.

This product includes Curl software which is Copyright 1996-2013, Daniel Stenberg, <daniel@haxx.se>. All Rights Reserved. Permissions and limitations regarding this software are subject to terms available at <http://curl.haxx.se/docs/copyright.html>. Permission to use, copy, modify, and distribute this software for any purpose with or without fee is hereby granted, provided that the above copyright notice and this permission notice appear in all copies.

The product includes software copyright 2001-2005 (©) MetaStuff, Ltd. All Rights Reserved. Permissions and limitations regarding this software are subject to terms available at <http://www.dom4j.org/license.html>.

The product includes software copyright © 2004-2007, The Dojo Foundation. All Rights Reserved. Permissions and limitations regarding this software are subject to terms available at <http://dojotoolkit.org/license>.

This product includes ICU software which is copyright International Business Machines Corporation and others. All rights reserved. Permissions and limitations regarding this software are subject to terms available at <http://source.icu-project.org/repos/icu/icu/trunk/license.html>.

This product includes software copyright © 1996-2006 Per Bothner. All rights reserved. Your right to use such materials is set forth in the license which may be found at <http://www.gnu.org/software/kawa/Software-License.html>.

This product includes OSSP UUID software which is Copyright © 2002 Ralf S. Engelschall, Copyright © 2002 The OSSP Project Copyright © 2002 Cable & Wireless Deutschland. Permissions and limitations regarding this software are subject to terms available at <http://www.opensource.org/licenses/mit-license.php>.

This product includes software developed by Boost (<http://www.boost.org/>) or under the Boost software license. Permissions and limitations regarding this software are subject to terms available at http://www.boost.org/LICENSE_1_0.txt.

This product includes software copyright © 1997-2007 University of Cambridge. Permissions and limitations regarding this software are subject to terms available at <http://www.pcre.org/license.txt>.

This product includes software copyright © 2007 The Eclipse Foundation. All Rights Reserved. Permissions and limitations regarding this software are subject to terms available at <http://www.eclipse.org/org/documents/epl-v10.php> and at <http://www.eclipse.org/org/documents/edl-v10.php>.

This product includes software licensed under the terms at <http://www.tcl.tk/software/tcltk/license.html>, <http://www.bosrup.com/web/overlib/?License>, <http://www.stlport.org/doc/license.html>, <http://asm.ow2.org/license.html>, <http://www.cryptix.org/LICENSE.TXT>, <http://hsqldb.org/web/hsqldbLicense.html>, <http://httpunit.sourceforge.net/doc/license.html>, <http://jung.sourceforge.net/license.txt>, http://www.gzip.org/zlib/zlib_license.html, <http://www.openldap.org/software/release/license.html>, <http://www.libssh2.org>, <http://slf4j.org/license.html>, <http://www.sente.ch/software/OpenSourceLicense.html>, <http://fusesource.com/downloads/license-agreements/fuse-message-broker-v-5-3-license-agreement>; <http://antlr.org/license.html>; <http://aopalliance.sourceforge.net/>; <http://www.bouncycastle.org/licence.html>; <http://www.jgraph.com/jgraphdownload.html>; <http://www.jcraft.com/jsch/LICENSE.txt>; http://jotm.objectweb.org/bsd_license.html; <http://www.w3.org/Consortium/Legal/2002/copyright-software-20021231>; <http://www.slf4j.org/license.html>; <http://nanoxml.sourceforge.net/orig/copyright.html>; <http://www.json.org/license.html>; <http://forge.ow2.org/projects/javaservice/>; <http://www.postgresql.org/about/license.html>, <http://www.sqlite.org/copyright.html>, <http://www.tcl.tk/software/tcltk/license.html>, <http://www.jaxen.org/faq.html>, <http://www.jdom.org/docs/faq.html>, <http://www.slf4j.org/license.html>; <http://www.iodbc.org/dataspace/iodbc/wiki/IODBC/License>; <http://www.keplerproject.org/md5/license.html>; <http://www.toedter.com/en/jcalendar/license.html>; <http://www.edankert.com/bounce/index.html>; <http://www.net-snmp.org/about/license.html>; <http://www.openmdx.org/#FAQ>; http://www.php.net/license/3_01.txt; <http://srp.stanford.edu/license.txt>; <http://www.schneier.com/blowfish.html>; <http://www.jmock.org/license.html>; <http://xsom.java.net>; <http://benalman.com/about/license/>; <https://github.com/CreateJS/EaselJS/blob/master/src/easeljs/display/Bitmap.js>; <http://www.h2database.com/html/license.html#summary>; <http://jsoncpp.sourceforge.net/LICENSE>; <http://jdbc.postgresql.org/license.html>; <http://protobuf.googlecode.com/svn/trunk/src/google/protobuf/descriptor.proto>; <https://github.com/rantav/hector/blob/master/LICENSE>; <http://web.mit.edu/Kerberos/krb5-current/doc/mitK5license.html>; <http://jibx.sourceforge.net/jibx-license.html>; <https://github.com/lyokato/libgeohash/blob/master/LICENSE>; <https://github.com/hjiang/jsonxx/blob/master/LICENSE>; <https://code.google.com/p/lz4/>; <https://github.com/jedisct1/libsodium/blob/master/LICENSE>; <http://one-jar.sourceforge.net/index.php?page=documents&file=license>; <https://github.com/EsotericSoftware/kryo/blob/master/license.txt>; <http://www.scala-lang.org/license.html>; <https://github.com/tinkerpop/blueprints/blob/master/LICENSE.txt>; <http://gee.cs.oswego.edu/dl/classes/EDU/oswego/cs/dl/util/concurrent/intro.html>; <https://aws.amazon.com/asl/>; <https://github.com/twbs/bootstrap/blob/master/LICENSE>; <https://sourceforge.net/p/xmlunit/code/HEAD/tree/trunk/LICENSE.txt>; <https://github.com/documentcloud/underscore-contrib/blob/master/LICENSE>, and <https://github.com/apache/hbase/blob/master/LICENSE.txt>.

This product includes software licensed under the Academic Free License (<http://www.opensource.org/licenses/afl-3.0.php>), the Common Development and Distribution License (<http://www.opensource.org/licenses/cddl1.php>), the Common Public License (<http://www.opensource.org/licenses/cpl1.0.php>), the Sun Binary Code License Agreement Supplemental License Terms, the BSD License (<http://www.opensource.org/licenses/bsd-license.php>), the new BSD License (<http://opensource.org/licenses/BSD-3-Clause>), the MIT License (<http://www.opensource.org/licenses/mit-license.php>), the Artistic License (<http://www.opensource.org/licenses/artistic-license-1.0>) and the Initial Developer's Public License Version 1.0 (<http://www.firebirdsql.org/en/initial-developer-s-public-license-version-1-0/>).

This product includes software copyright © 2003-2006 Joe Walnes, 2006-2007 XStream Committers. All rights reserved. Permissions and limitations regarding this software are subject to terms available at <http://xstream.codehaus.org/license.html>. This product includes software developed by the Indiana University Extreme! Lab. For further information please visit <http://www.extreme.indiana.edu/>.

This product includes software Copyright (c) 2013 Frank Balluffi and Markus Moeller. All rights reserved. Permissions and limitations regarding this software are subject to terms of the MIT license.

See patents at <https://www.informatica.com/legal/patents.html>.

DISCLAIMER: Informatica LLC provides this documentation "as is" without warranty of any kind, either express or implied, including, but not limited to, the implied warranties of noninfringement, merchantability, or use for a particular purpose. Informatica LLC does not warrant that this software or documentation is error free. The information provided in this software or documentation may include technical inaccuracies or typographical errors. The information in this software and documentation is subject to change at any time without notice.

NOTICES

This Informatica product (the "Software") includes certain drivers (the "DataDirect Drivers") from DataDirect Technologies, an operating company of Progress Software Corporation ("DataDirect") which are subject to the following terms and conditions:

1. THE DATADIRECT DRIVERS ARE PROVIDED "AS IS" WITHOUT WARRANTY OF ANY KIND, EITHER EXPRESSED OR IMPLIED, INCLUDING BUT NOT LIMITED TO, THE IMPLIED WARRANTIES OF MERCHANTABILITY, FITNESS FOR A PARTICULAR PURPOSE AND NON-INFRINGEMENT.
2. IN NO EVENT WILL DATADIRECT OR ITS THIRD PARTY SUPPLIERS BE LIABLE TO THE END-USER CUSTOMER FOR ANY DIRECT, INDIRECT, INCIDENTAL, SPECIAL, CONSEQUENTIAL OR OTHER DAMAGES ARISING OUT OF THE USE OF THE ODBC DRIVERS, WHETHER OR NOT INFORMED OF THE POSSIBILITIES OF DAMAGES IN ADVANCE. THESE LIMITATIONS APPLY TO ALL CAUSES OF ACTION, INCLUDING, WITHOUT LIMITATION, BREACH OF CONTRACT, BREACH OF WARRANTY, NEGLIGENCE, STRICT LIABILITY, MISREPRESENTATION AND OTHER TORTS.

Publication Date: 2018-07-03

Table of Contents

Preface	6
Informatica Resources.	6
Informatica Network.	6
Informatica Knowledge Base.	6
Informatica Documentation.	7
Informatica Product Availability Matrixes.	7
Informatica Velocity.	7
Informatica Marketplace.	7
Informatica Global Customer Support.	7
Chapter 1: Introduction to the Stored Procedure Accelerator for Sybase	8
Stored Procedure Accelerator for Sybase Overview.	8
Masking Stored Procedures.	8
Parameter Data Types.	9
Stored Procedure Accelerator Components.	9
Stored Procedure Accelerator Maintenance.	10
Stored Procedure Accelerator Example.	10
Chapter 2: Stored Procedure Accelerator Setup	12
Stored Procedure Accelerator Setup Overview.	12
Step 1. Verify Requirements.	13
Step 2. Grant User Permissions.	13
Step 3. Add the JDBC Driver.	13
Step 4. Create the Cleanup Job.	14
Create the Cleanup Task on Windows.	14
Create the Cleanup Job on Linux.	19
Step 5. Create a Database Connection.	21
Step 6. Create a Connection Rule.	22
Step 7. Import the Security Rule Sets.	24
Importing the StoredProc Rule Set.	24
Configuring the StoredProc Rules.	24
Importing the StoredProcMasks Rule Set.	27
Configuring the StoredProcMasks Rules.	27
Step 8. Define Masking Rules.	28
Chapter 3: Stored Procedure Accelerator Rules	29
Stored Procedure Accelerator Rules Overview.	29
Connection Rule.	29
StoredProc Rule Set.	30
MatchProcNamesFolder Rule.	30

DefMaskRSSym Rule.	31
MaskProcs Rule.	31
StoredProcMasks Rule Set.	32
ProcMasks1 Rule.	32
Index.	34

Preface

The *Stored Procedure Accelerator Guide for Sybase* contains information to help administrators use the stored procedure accelerator to implement Dynamic Data Masking for stored procedures in a Sybase ASE database. This guide assumes that you have knowledge of Dynamic Data Masking.

Informatica Resources

Informatica Network

Informatica Network hosts Informatica Global Customer Support, the Informatica Knowledge Base, and other product resources. To access Informatica Network, visit <https://network.informatica.com>.

As a member, you can:

- Access all of your Informatica resources in one place.
- Search the Knowledge Base for product resources, including documentation, FAQs, and best practices.
- View product availability information.
- Review your support cases.
- Find your local Informatica User Group Network and collaborate with your peers.

As a member, you can:

- Access all of your Informatica resources in one place.
- Search the Knowledge Base for product resources, including documentation, FAQs, and best practices.
- View product availability information.
- Find your local Informatica User Group Network and collaborate with your peers.

Informatica Knowledge Base

Use the Informatica Knowledge Base to search Informatica Network for product resources such as documentation, how-to articles, best practices, and PAMs.

To access the Knowledge Base, visit <https://kb.informatica.com>. If you have questions, comments, or ideas about the Knowledge Base, contact the Informatica Knowledge Base team at KB_Feedback@informatica.com.

Informatica Documentation

To get the latest documentation for your product, browse the Informatica Knowledge Base at https://kb.informatica.com/_layouts/ProductDocumentation/Page/ProductDocumentSearch.aspx.

If you have questions, comments, or ideas about this documentation, contact the Informatica Documentation team through email at infa_documentation@informatica.com.

Informatica Product Availability Matrixes

Product Availability Matrixes (PAMs) indicate the versions of operating systems, databases, and other types of data sources and targets that a product release supports. If you are an Informatica Network member, you can access PAMs at

<https://network.informatica.com/community/informatica-network/product-availability-matrixes>.

Informatica Velocity

Informatica Velocity is a collection of tips and best practices developed by Informatica Professional Services. Developed from the real-world experience of hundreds of data management projects, Informatica Velocity represents the collective knowledge of our consultants who have worked with organizations from around the world to plan, develop, deploy, and maintain successful data management solutions.

If you are an Informatica Network member, you can access Informatica Velocity resources at <http://velocity.informatica.com>.

If you have questions, comments, or ideas about Informatica Velocity, contact Informatica Professional Services at ips@informatica.com.

Informatica Marketplace

The Informatica Marketplace is a forum where you can find solutions that augment, extend, or enhance your Informatica implementations. By leveraging any of the hundreds of solutions from Informatica developers and partners, you can improve your productivity and speed up time to implementation on your projects. You can access Informatica Marketplace at <https://marketplace.informatica.com>.

Informatica Global Customer Support

You can contact a Global Support Center by telephone or through Online Support on Informatica Network.

To find your local Informatica Global Customer Support telephone number, visit the Informatica website at the following link:

<http://www.informatica.com/us/services-and-training/support-services/global-support-centers>.

If you are an Informatica Network member, you can use Online Support at <http://network.informatica.com>.

CHAPTER 1

Introduction to the Stored Procedure Accelerator for Sybase

This chapter includes the following topics:

- [Stored Procedure Accelerator for Sybase Overview, 8](#)
- [Masking Stored Procedures, 8](#)
- [Stored Procedure Accelerator Components, 9](#)
- [Stored Procedure Accelerator Maintenance, 10](#)
- [Stored Procedure Accelerator Example, 10](#)

Stored Procedure Accelerator for Sybase Overview

Use the Stored Procedure Accelerator for Sybase to implement Dynamic Data Masking to mask stored procedures in a Sybase ASE database. The accelerator package contains predefined Dynamic Data Masking security rule templates and example rules.

The Stored Procedure Accelerator for Sybase is in the Dynamic Data Masking installation directory as an additional component that you can configure to mask stored procedures. You can define masking rules based on the stored procedures and sensitive data in the Sybase ASE database.

Masking Stored Procedures

Dynamic Data Masking uses a Java Action security rule to determine whether an incoming statement is a call to a stored procedure. The Java Action rewrites the call to the stored procedure so that the masking rules can use the result set structures.

To mask stored procedure outputs, Dynamic Data Masking dynamically creates tables within the Sybase ASE database based on the structure of the result set. You define the temporary database and schema as symbols in the security rule set. Dynamic Data Masking creates tables in the temporary database and schema. Dynamic Data Masking then populates the table with data in the temporary database. Dynamic Data Masking names the tables in the temporary database in the following way:

```
DDM_<Procedure Name>_<unique long number for call>_<result set sequence number>
```


For example, a table in the temporary database might have the following name:

```
DDM_Proc_Dept_Emp_1426236444222_0
```

The unique long number for call and the result set sequence number are automatically generated numbers.

For each result set that the procedure returns, Dynamic Data Masking creates a new table in the temporary database and populates the table with data. Dynamic Data Masking then forms a select query for the table in the temporary database and masks the query based on the security rules. Dynamic Data Masking creates a temporary stored procedure in the temporary database that uses the masked select query. The client receives the results of the temporary stored procedure call.

Stored Procedure Names with Semicolons

Sybase table names cannot contain a semicolon (;). If the stored procedure name contains a semicolon, Dynamic Data Masking changes the semicolon to an underscore (_) in the temporary database.

When you enter the table name to mask in the stored procedure masking rules, you must replace the semicolon in the stored procedure name to an underscore. For example, if you have a stored procedure with the following name:

```
GetEmployeeName;3
```

Dynamic Data Masking creates the following table in the temporary database:

```
DDM_GetEmployeeName_3_<unique long number for call>_<result set sequence number>
```

When you create masking rules for the stored procedure, you enter the following text in the Mask rule action Table Name parameter:

```
. * DDM_GetEmployeeName_3.*
```

Parameter Data Types

The stored procedures that you mask with the Stored Procedure Accelerator for Sybase must have parameters with recognized data types.

You can use the accelerator to mask stored procedures that contain parameters with the following data types:

Constant Arguments

- char
- date
- integer

Binding Arguments

- char
- date
- integer

Stored Procedure Accelerator Components

The accelerator contains .jar files and four security rule sets.

You can find the accelerator in the following directory:

```
<Dynamic Data Masking installation>\Accelerators\StoredProcedureMasking
```

Dynamic Data Masking uses the .jar files, MultipleStatementMasking.jar and StoredProcedureMasking.jar, in the Java Action security rule to mask stored procedures.

You must configure two security rule sets to use the accelerator. The accelerator contains template rule sets and sample HR security rule sets.

Stored Procedure Accelerator Maintenance

Remove tables and temporary stored procedures from the temporary database or create a cleanup job that drops the temporary objects that the accelerator creates in the temporary database as part of the masking process.

To mask stored procedures, Dynamic Data Masking dynamically creates tables and temporary stored procedures in a temporary database that you define in the accelerator security rules. After the Rule Engine applies masking rules to the SQL statement, it creates a temporary stored procedure and sends the request to the tables in the temporary database.

You can create a cleanup scheduled task on Windows or a cleanup Cronjob on Linux to drop the tables and stored procedures. If you do not create the job, you must periodically manually drop the tables and stored procedures in the temporary database.

Stored Procedure Accelerator Example

You want to mask data called by a stored procedure.

You have a stored procedure named Proc_Dept_Emp. The stored procedure calls the following columns in the Dept_Emp table:

- EMPLOYEE_ID
- Last_Name
- FIRST_NAME
- JOB_ID
- Job_Title
- SALARY
- COMM
- DEPARTMENT_ID

You set up the stored procedure accelerator and create a masking rule set. You have a masking rule that masks the Proc_Dept_Emp stored procedure. The following table describes the columns and masking functions that you define in the masking rule:

Column	Masking Function
.*SALARY	999
.*COMM	substring(convert(varchar,\(col),0),1,1)

Column	Masking Function
.*Last_Name	substring(\(col),1,2)
When you create the masking rule, you must enter the column name preceded by .*.	

You send the following request to the database:

```
EXEC Proc_Dept_Emp @manager_id = 25 , @dept_id = 10
```

The Dynamic Data Masking Java Action converts the request to the following statement:

```
SELECT EMPLOYEE_ID,
Last_Name, FIRST_NAME, JOB_ID, Job Title, SALARY, COMM, DEPARTMENT_ID
FROM tempdb.dbo.DDM_Proc_Dept_Emp_1426236444222_0
```

Note: The name of the table is the table that Dynamic Data Masking created in the temporary database.

The masking rule then changes the request to the following statement:

```
SELECT EMPLOYEE_ID,
substring(Last_Name ,1,2) Last_Name, FIRST_NAME, JOB_ID, Job Title, 999 SALARY,
substring(convert(varchar,COMM ,0),1,1) COMM, DEPARTMENT_ID
FROM tempdb.dbo.DDM_Proc_Dept_Emp_1426236444222_0
```

Dynamic Data Masking creates a temporary stored procedure in the temporary database that uses the masked select statement and sends the request to the following temporary stored procedure:

```
EXEC tempdb.dbo.DDM_MASKED_Proc_Dept_Emp_1426236444222 @manager_id=25 ,@dept_id = 10
```

CHAPTER 2

Stored Procedure Accelerator Setup

This chapter includes the following topics:

- [Stored Procedure Accelerator Setup Overview, 12](#)
- [Step 1. Verify Requirements, 13](#)
- [Step 2. Grant User Permissions, 13](#)
- [Step 3. Add the JDBC Driver, 13](#)
- [Step 4. Create the Cleanup Job, 14](#)
- [Step 5. Create a Database Connection, 21](#)
- [Step 6. Create a Connection Rule, 22](#)
- [Step 7. Import the Security Rule Sets, 24](#)
- [Step 8. Define Masking Rules, 28](#)

Stored Procedure Accelerator Setup Overview

Set up the Stored Procedure Accelerator for Sybase to mask stored procedure result sets in Sybase ASE.

To set up the accelerator, perform the following tasks:

1. Verify the setup requirements.
2. Grant user permissions.
3. Add the JDBC Driver.
4. Schedule the cleanup task on Windows or the cleanup job on Linux and UNIX.
5. Create a Sybase ASE database connection.
6. Create a connection rule.
7. Import the accelerator security rule sets and configure the rules.
8. Define masking rules for stored procedures.

Step 1. Verify Requirements

Verify the following requirements before you use the Stored Procedure Accelerator for Sybase:

- You must have Dynamic Data Masking version 9.6.2 or later installed.
- You must have a Sybase ASE database that contains stored procedures. If the database does not contain a stored procedure, you can set up the accelerator and create rules, but the rules will not return a match and will not mask data.
- The client application that sends requests to the database must connect to Dynamic Data Masking with a jConnect 6.x or jConnect 7.x JDBC driver.

Step 2. Grant User Permissions

Grant user access to the temporary database.

Every user that executes the stored procedures must have access to the temporary database. You must also grant access to the temporary database for the Dynamic Data Masking user that you use to create the database connection in the Management Console.

To grant access to the temporary database, run the following command:

```
use <temporary database name>  
sp_adduser <user name>
```

Step 3. Add the JDBC Driver

Add the Sybase jConnect 7.x JDBC driver to the Dynamic Data Masking installation directory.

1. Copy the Sybase jConnect 7.x JDBC driver and save the driver in the following location:

```
<Dynamic Data Masking installation>/lib/ext
```

2. Open a Server Control window.

- On Windows, run the following commands:

```
- server stop  
- server remove  
- server start
```

- On Linux, run the following commands:

```
- ./server stop  
- ./server start
```

Step 4. Create the Cleanup Job

To conserve space in the database, create a cleanup task on Windows or a cleanup job on Linux and UNIX.

To mask stored procedures, Dynamic Data Masking dynamically creates tables and temporary stored procedures in a temporary database that you define in the accelerator security rules. After the Rule Engine applies masking rules to the SQL statement, it creates a temporary stored procedure and sends the request to the tables in the temporary database. If you do not create a cleanup job, you must manually drop the tables and stored procedures in the temporary database.

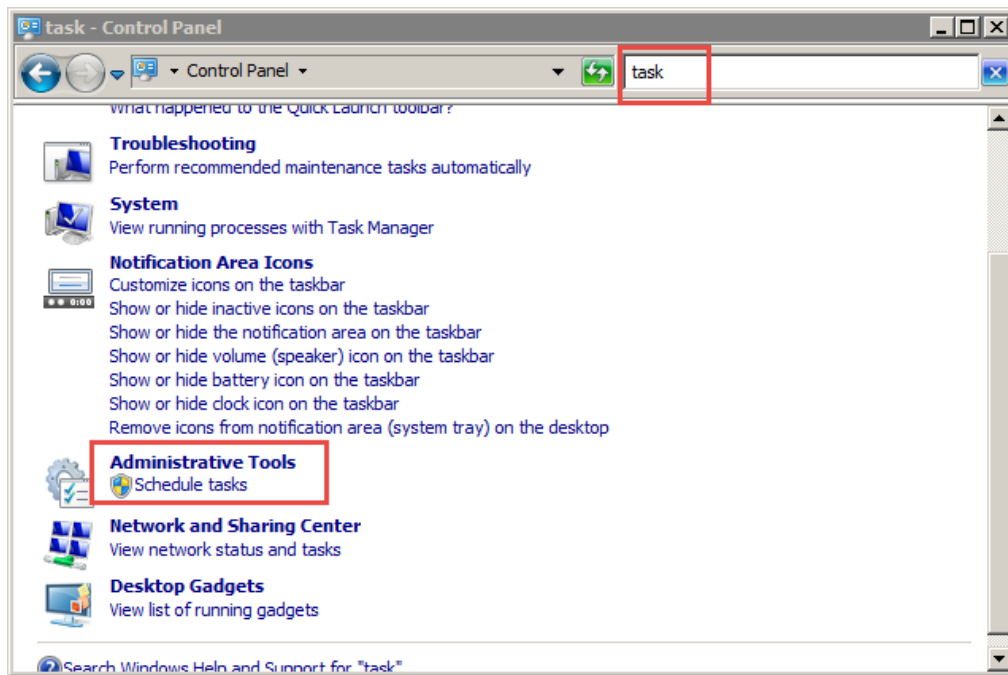
Create the Cleanup Task on Windows

Use the Windows Task Scheduler to create the cleanup task on Windows.

To use the cleanup script on Windows, you must have the Sybase isql command line tool installed on the machine where you run the batch file. The batch file uses the isql command line tool to run the cleanup script.

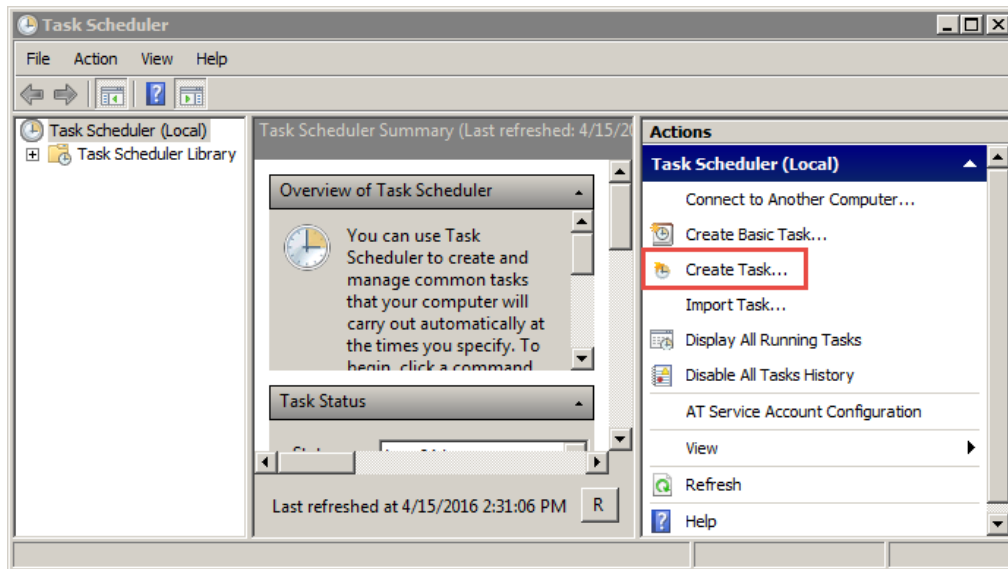
1. In the Windows Control Panel, open the **Schedule tasks** administrative tool. To find the **Schedule tasks** option, you can search for **task** in the search bar.

The following image shows the **Schedule tasks** administrative tool:



2. In the **Task Scheduler** window, click **Create Task** in the right pane.

The following image shows the location of the **Create Task** option:



The **Create Task** window opens.

3. In the General tab of the **Create Task** window, edit the following parameters:

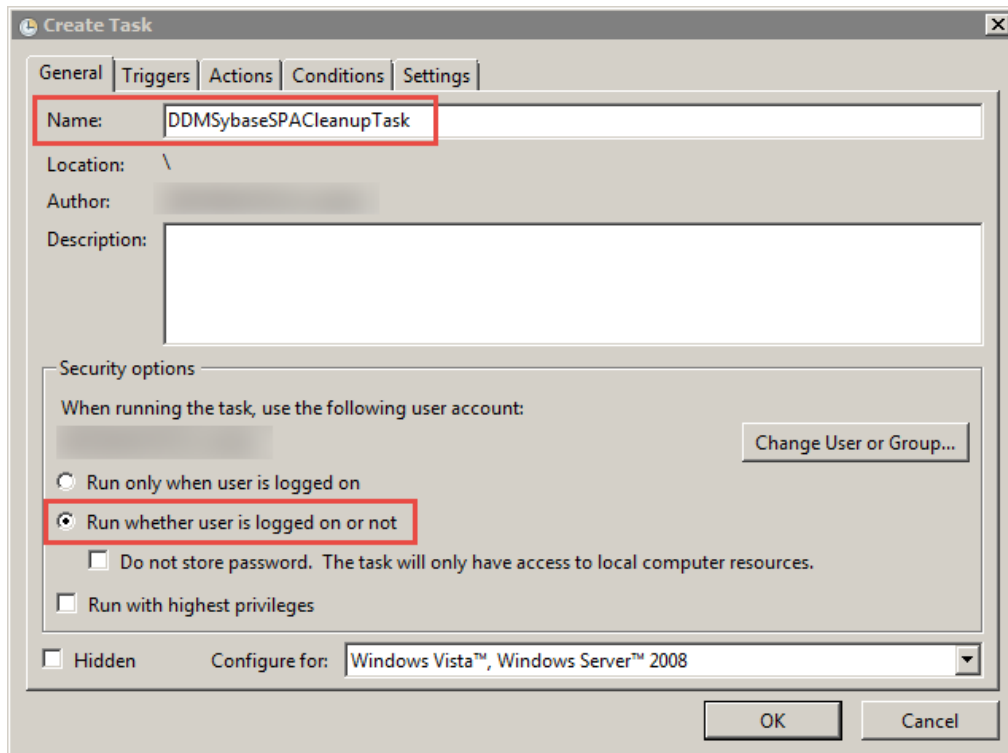
Name

The name of the task. For example, you might enter DDMSybaseSPACleanupTask.

Run whether user is logged on or not

Enable the **Run whether user is logged on or not** option.

The following image shows the General tab properties:



4. In the **Create Task** window, open the Triggers tab.
5. Click **New** to add a new trigger.
The **New Trigger** window opens.
6. In the **New Trigger** window, edit the following properties based on your requirements:

Begin the task

Select an option. For example, you might select **At startup**.

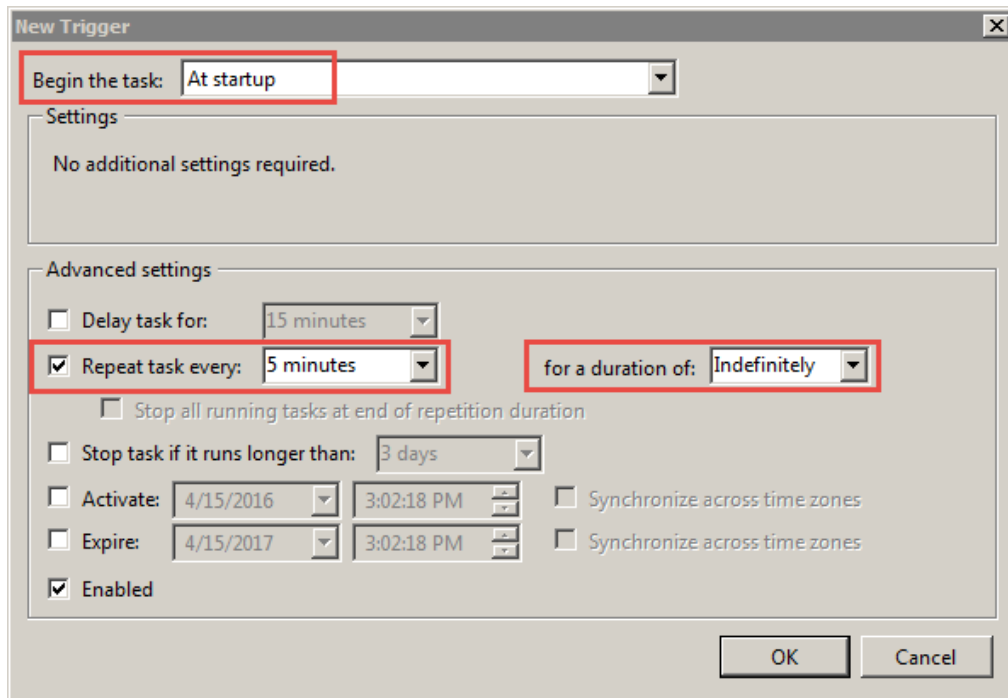
Repeat task every

Select an option. For example, you might select **5 minutes**.

for a duration of

Select an option. For example, you might select **Indefinitely**.

The following image shows the **New Trigger** window properties:



7. Click **OK** to close the window and add the trigger to the triggers list.
8. In the **Create Task** window, open the Actions tab.
9. Click **New** to add a new action.
The **New Action** window opens.
10. In the **New Action** window, edit the following properties based on your requirements:

Action

Select **Start a program**.

Program/script

Click **Browse** and navigate to the directory that contains the CLEANUP_TEMP_OBJECTS.bat file. You can find the file in the following location:

```
<Dynamic Data Masking installation>\Accelerators\StoredProcedureMasking\sql
\Sybase\CLEANUP_TEMP_OBJECTS.bat
```

Add arguments

Add the following arguments separated by a space:

- **CREATED_BEFORE_SECONDS**. Objects that have a creation time that is before the value of the created_before_seconds attribute are considered for deletion. Specify the time in seconds.
- **DATABASE_NAME**. The name of the database where Dynamic Data Masking creates the temporary tables.
- **SCHEMA_NAME**. The name of the schema where Dynamic Data Masking creates the temporary tables.
- **DATABASE_SERVER_HOST**. The host name of the Sybase database server where Dynamic Data Masking creates the temporary tables and stored procedures.

- DATABASE_USERNAME. The user name of the Sybase database user that Dynamic Data Masking uses to create the temporary tables and stored procedures.
- DATABASE_PASSWORD. The password of the Sybase database user that Dynamic Data Masking uses to create the temporary tables and stored procedures.

For example, you might enter the following text:

```
10 tempdb dbo SYBASESERVER ddmadmin infa@123
```

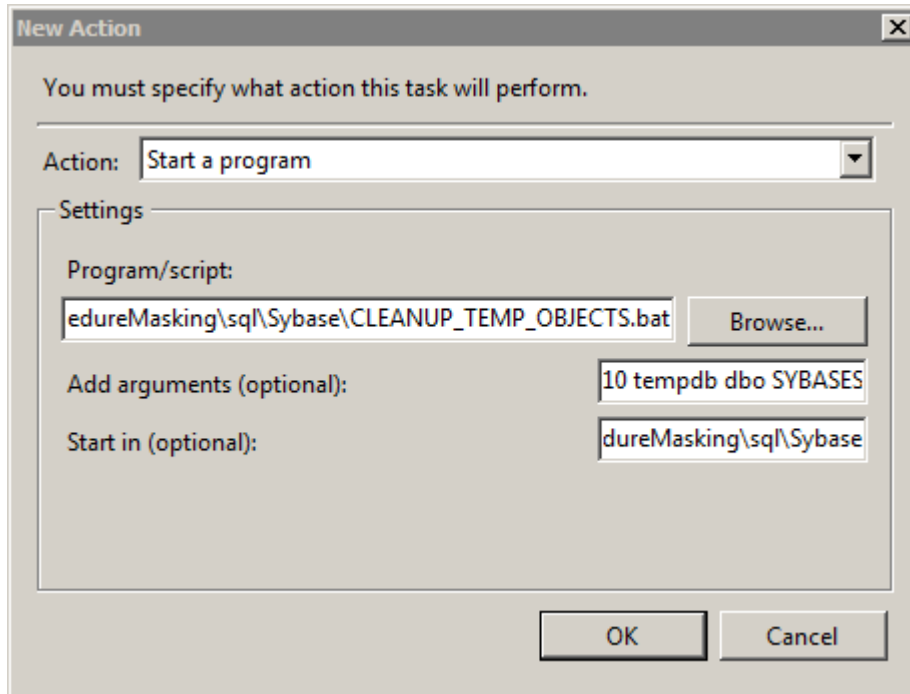
Start in

Enter the file path of a directory in which the user has permissions to create, delete, and modify a file. Informatica recommends that you enter the file path of the directory that contains the CLEANUP_TEMP_OBJECTS.bat file.

For example, you might enter the following file path:

```
<Dynamic Data Masking installation>\Accelerators\StoredProcedureMasking\sql\nSybase
```

The following image shows the **New Action** window properties:



11. Click **OK** to close the window and add the action to the actions list.
12. In the **Create Task** window, open the Settings tab.
13. In the Settings tab, edit the following properties based on your requirements:

Run task as soon as possible after a scheduled start is missed

For example, you might enable the option.

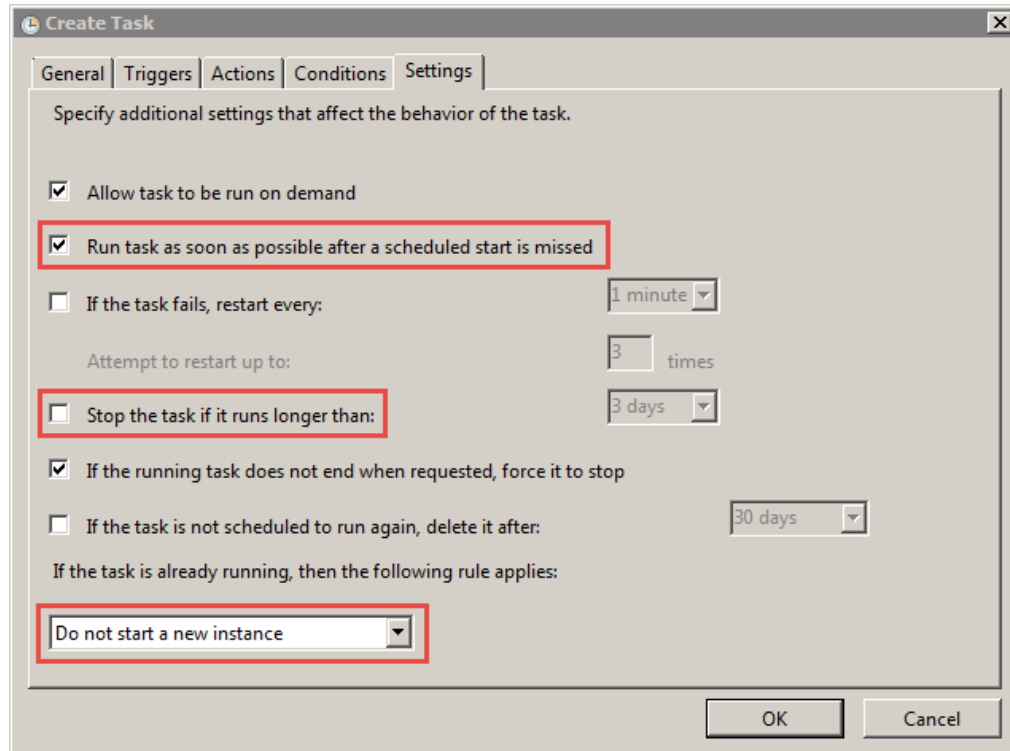
Stop the task if it runs longer than

For example, you might disable the option.

If the task is already running, then the following rule applies

Select **Do not start a new instance**.

The following image shows the Settings properties:



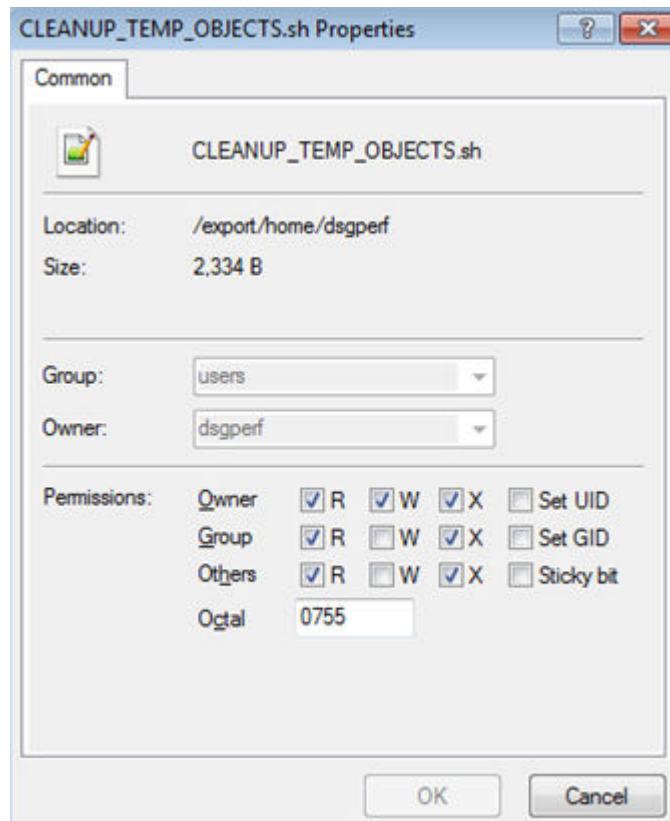
14. Click **OK**.
The **Task Scheduler** confirmation window opens.
15. Click **Yes** in the **Task Scheduler** confirmation window.
The task is created successfully.

Create the Cleanup Job on Linux

Schedule a cronjob to run the cleanup job on Linux and UNIX.

Before you schedule the cleanup job, you must verify that the cleanup script file has the required permissions. The Octal parameter must be set to 0775.

The following image shows the file permissions:



1. Log in to the machine and run the following command:

- On Linux, enter `sudo crontab -e`
- On UNIX, enter `crontab -e`

The shell lists the crontab file contents.

2. Enter `i` to switch to insert mode.

3. Enter the following command to schedule a cronjob to run the CLEANUP_TEMP_OBJECTS.sh script:

```
* * * * * <Path_To_The_Script_File>/CLEANUP_TEMP_OBJECTS.sh {CREATED_BEFORE_SECONDS}
{DATABASE_NAME} {SCHEMA_NAME} {DATABASE_SERVER_HOST} {DATABASE_USERNAME}
{DATABASE_PASSWORD} {SYBASE_INSTALLATION_PATH} {USER_TEMP_DIRECTORY} >>
{Output_Log_File_Path}
```

The command uses the following parameters:

CREATED_BEFORE_SECONDS

Objects that have a creation time that is before the value of the `created_before_seconds` attribute are considered for deletion. Specify the time in seconds.

DATABASE_NAME

The name of the database where Dynamic Data Masking creates the temporary tables.

SCHEMA_NAME

The name of the schema where Dynamic Data Masking creates the temporary tables.

DATABASE_SERVER_HOST

The host name of the Sybase database server where Dynamic Data Masking creates the temporary tables and stored procedures.

DATABASE_USERNAME

The user name of the Sybase database user that Dynamic Data Masking uses to create the temporary tables and stored procedures.

DATABASE_PASSWORD

The password of the Sybase database user that Dynamic Data Masking uses to create the temporary tables and stored procedures.

SYBASE_INSTALLATION_PATH

The Sybase installation path. Dynamic Data Masking uses the value to run the SYBASE.sh file that sets the required environment variables for the isql command line tool.

USER_TEMP_DIRECTORY

The file path of a directory in which the user has permissions to create, delete, and modify a file.

For example, you might enter the following text:

```
*/2 * * * * /export/home/dsgperf/CLEANUP_TEMP_OBJECTS.sh 10 tempdb ddmadmin
SYBASESERVER ddmadmin ddmadmin /export/home/sybdba/ASE157 /export/home/dsgperf >> /
export/home/dsgperf/cleanupJob.log
```

In the example, cronjob is scheduled to run every two minutes and the shell script is defined as `/export/home/dsgperf/CLEANUP_TEMP_OBJECTS.sh`. The example defines the following parameters:

- **CREATED_BEFORE_SECONDS.** 10 seconds
- **DATABASE_NAME.** tempdb
- **SCHEMA_NAME.** ddmadmin
- **DATABASE_SERVER_HOST.** SYBASESERVER
- **DATABASE_USERNAME.** ddmadmin
- **DATABASE_PASSWORD.** ddmadmin
- **SYBASE_INSTALLATION_PATH.** /export/home/sybdba/ASE157
- **USER_TEMP_DIRECTORY.** /export/home/dsgperf

For more information about cronjob options, see the nnCron documentation at the following URL:

<http://www.nncron.ru/help/EN/working/cron-format.htm>

4. Press escape to exit insert mode.
5. Enter `:wq!` to save the changes that you made to the crontab file and exit.

The cronjob runs at the frequency that you defined.

Each time the cronjob runs, the SQL in the CLEANUP_TEMP_OBJECTS.sh file is executed using the isql utility and the temporary tables and stored procedures are dropped.

Step 5. Create a Database Connection

Add the Dynamic Data Masking service for Sybase in the Management Console and connect to the database.

1. Log in to the Dynamic Data Masking Management Console.

2. Select the Dynamic Data Masking Server in the Management Console tree and click **Tree > Add DDM Services**.

The **Add DDM Services** window appears.

3. Select DDM for Sybase and click **OK**.

The DDM for Sybase node appears in the Management Console tree.

4. Select the Management Console tree root node and click **Tree > Add Database**.

The **Add Database** window appears.

5. Select the Sybase database type and configure the database connection parameters.

The following table describes the connection parameters:

Parameters	Description
DDM Database Name	Name for the database in the Management Console tree.
Server Address	Server host name or TCP/IP address for the Sybase database. Note: Verify that there is no firewall that prohibits the Dynamic Data Masking Server from connecting to the database server and port number.
Server Port	TCP/IP listener port for the Sybase database.
Optional Parameters	Additional parameters for the Informatica driver for Sybase.
DBA Username	User name for the database user account to log in to the Sybase database.
DBA Password	Password for the database user.

6. Click **Test Connection** and verify that Dynamic Data Masking is connected to the database.

7. Click **OK**.

The database node appears in the Management Console tree.

Step 6. Create a Connection Rule

Create a connection rule that directs SQL requests to the StoredProcTmpl rule set.

1. Select the Dynamic Data Masking service node for Sybase that you created in the Management Console tree and click **Tree > Connection Rules**.

The **Rule Editor** opens.

2. In the **Rule Editor**, select the DDM for Sybase node in the tree and select **Action > Append Rule**.

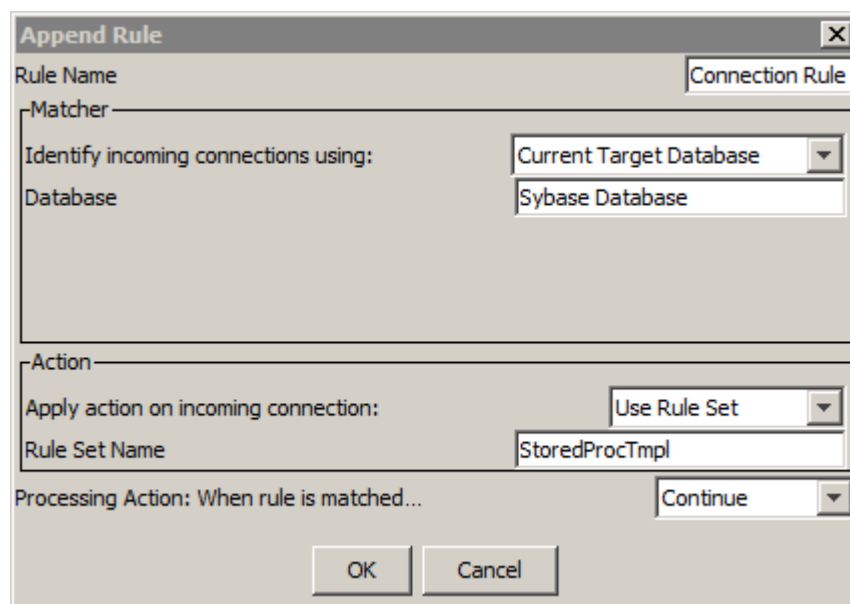
The **Append Rule** window opens.

- In the **Append Rule** window, configure the following parameters:

Parameter	Description
Rule Name	The logical name of the rule that appears in the rule tree. Enter the name of the connection rule.
Rule Matcher	Defines the criteria that the Rule Engine uses to identify a match. Select Current Target Database.
Database	Defines the target database name. Enter the name of the database.
Rule Action	Defines the action that the Rule Engine applies to incoming connections. Select Use Rule Set.
Rule Set Name	Defines the rule set that the Use Rule Set rule action sends the request to. Enter the name of the rule set that you want to direct the request to. To use the template rule sets, enter StoredProcTpl. The Rule Set Name that you enter is the name of the rule set that contains the Define Symbol and Java Action security rules. If you want to use the HR example rule set, enter HRStoreProcRS. If you want to create your own rule set, enter the name of the rule set that you create.
Processing Action	Determines how the Rule Engine processes the connection after the Rule Engine applies the connection rule. Select Continue.

- Click **OK**.
The rule appears in the **Rule Editor**.
- Select **File > Update Rules** to save the connection rule.
- Select **File > Exit** to close the **Rule Editor**.

The following image shows the connection rule:



Step 7. Import the Security Rule Sets

Import the security rule sets and configure the rules to mask stored procedures.

You can import the security rule set templates and alter them based on the stored procedures in the database. You can import the HR rule sets to use as an example.

When you import the rule set that contains the masking rules, you must alter the rules based on the columns that the stored procedure accesses. Create a separate security rule in the rule set for each stored procedure.

Importing the StoredProc Rule Set

Import the StoredProcTmpl security rule set into the Management Console.

1. Select the Management Console tree root node and click **Tree > Add Rule Set**.

The **Add Rule Set** window opens.

2. Enter StoredProcTmpl as the rule set name and click **OK**.

The StoredProcTmpl rule set node appears in the Management Console tree.

Note: If you want to use the HR example rule sets and you directed the connection rule to the HRStoredProcRS rule set, you must enter HRStoredProcRS as the rule set name.

3. Select the StoredProcTmpl node and click **Tree > Security Rule Set**.

The **Rule Editor** opens.

4. In the **Rule Editor**, click **Action > Import**.

The **Import** window opens.

5. Navigate to the following directory:

`<Dynamic Data Masking installation>\Accelerators\StoredProcedureMasking\rules\Sybase`

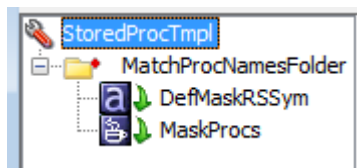
6. Select the Sybase_StoredProcRSTmpl.xml file and click **Import**.

The MatchProcNamesFolder rule folder appears in the **Rule Editor**.

Note: If you want to use the HR example rule sets, select the Sybase_HRStoredProcRS.xml file.

7. Expand the MatchProcNamesFolder rule folder to view the DefMaskRSSym and MasProcs rules.

The following image shows the security rule set rules:



8. Click **File > Update Rules** to save the security rules.

Configuring the StoredProc Rules

Configure the StoredProc rules in the **Rule Editor**.

1. Select the MatchProcNamesFolder rule and click **Action > Edit**.

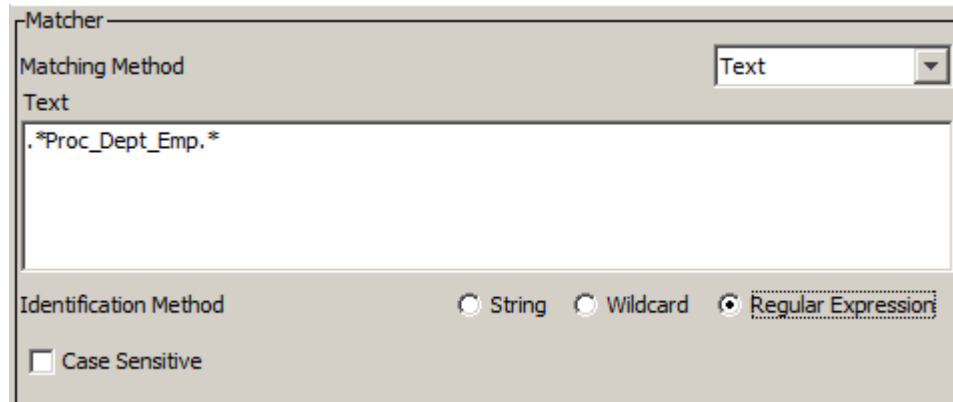
The **Edit Rule** window opens.

- In the Text field of the matcher, replace "proc name 1," "proc name 2," and "proc name 3" with stored procedure names.

For example, you might enter the following text in the Text field:

```
. *Proc_Dept_Emp.*
```

The following image shows the MatchProcsNamesFolder rule matcher parameters:



- Click **OK**.
The **Rule Editor** closes.
- Click **File > Update Rules** to save the security rule.
- Select the DefMaskRSSym rule and click **Action > Edit**.
The **Edit Rule** window opens.
- Define the following symbols:

ExplicitRuleSet

Enter ExplicitRuleSet in the Symbol Name field and the name of the rule set that contains the masking rules in the Symbol Value field. For the template rule sets, enter StoredProcMasksTpl. If you want to use the HR example rule set, enter HRStoredProcMasksRS.

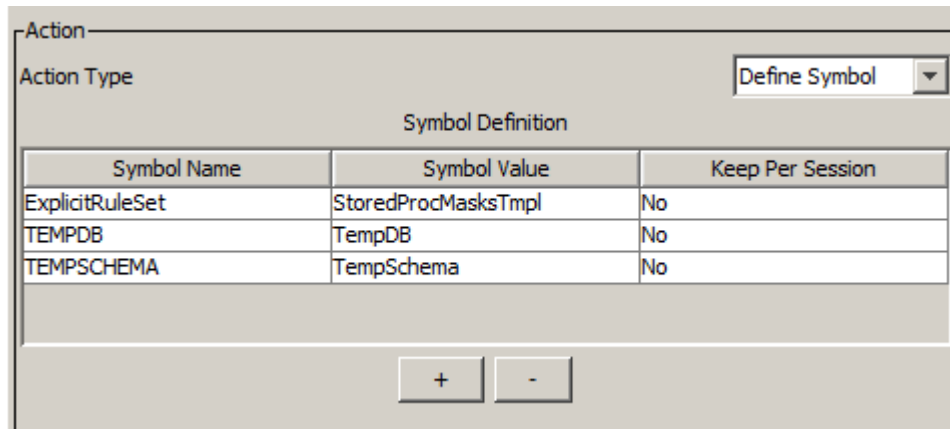
TEMPDB

Enter TEMPDB in the Symbol Name field and the name of the temporary database in the Symbol Value field, such as TempDB. If you do not define the TEMPDB symbol, Dynamic Data Masking uses the default value, tempdb.

TEMPSHEMA

Enter TEMPSHEMA in the Symbol Name field and the name of the temporary schema in the Symbol Value field, such as TempSchema. If you do not define the TEMPSHEMA symbol, Dynamic Data Masking uses the default value, dbo.

The following image shows the DefMaskRSSym rule action properties:



7. Click **OK**.
The **Rule Editor** closes.
8. Click **File > Update Rules** to save the security rule.
9. Select the MaskProcs rule and click **Action > Edit**.
The **Edit Rule** window opens.
10. In the rule action Class Path field, enter the file path of the stored procedure accelerator .jar files, separated by a semicolon (;).

You can find the .jar files in the following directory:

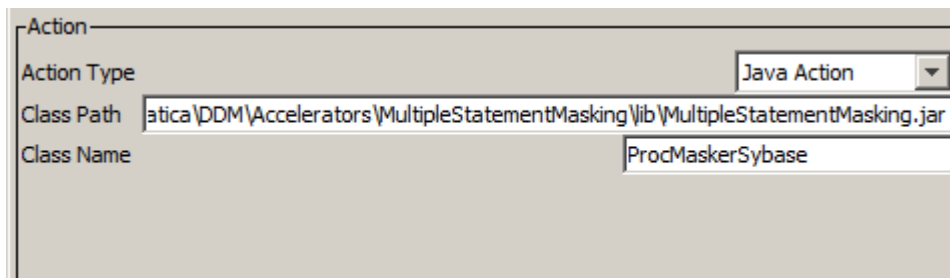
<Dynamic Data Masking installation>\Accelerators\StoredProcedureMasking\lib

For example, you might enter:

```
C:\Program Files\Informatica\DDM\Accelerators\StoredProcedureMasking\lib
\StoredProcedureMasking.jar;C:\Program Files\Informatica\DDM\Accelerators
\StoredProcedureMasking\lib\MultipleStatementMasking.jar
```

Note: The Class Name must be ProcMaskerSybase.

The following image shows the MaskProcs rule action parameters:



11. Click **OK**.
The **Rule Editor** closes.
12. Click **File > Update Rules** to save the security rules.
13. Click **File > Exit** to close the **Rule Editor**.

Importing the StoredProcMasks Rule Set

Import the StoredProcMasks masking rule set into the Management Console.

1. Select the Management Console tree root node and click **Tree > Add Rule Set**.

The **Add Rule Set** window opens.

2. Enter StoredProcMasksTpl as the rule set name and click **OK**.

The StoredProcMasksTpl rule set node appears in the Management Console tree.

Note: If you want to use the HR example rule sets, enter HRStoredProcMasksRS as the rule set name.

3. Select the StoredProcMasksTpl node and click **Tree > Security Rule Set**.

The **Rule Editor** opens.

4. In the **Rule Editor**, click **Action > Import**.

The **Import** window opens.

5. Navigate to the following directory:

<Dynamic Data Masking installation>\Accelerators\StoredProcedureMasking\rules\Sybase

6. Select the Sybase_StoredProcMasksRSTmpl.xml file and click **Import**.

The ProcMasks1 rule appears in the **Rule Editor**.

Note: If you want to use the HR example rules, select the Sybase_HRStoredProcMasksRS.xml file.

The following image shows the StoredProcMasksTpl rules:



7. Click **File > Update Rules** to save the security rules.

Configuring the StoredProcMasks Rules

Configure the StoredProcMasks rules in the Rule Editor.

1. Select the ProcMasks1 rule and click **Action > Edit**.

The **Edit Rule** window opens.

2. Edit the rule properties based on the stored procedure that you want to mask. For example, the HR rule set has a MaskProcDeptEmp rule with masking functions defined for each column.

The following image shows the rule action parameters in the HR MaskProcDeptEmp example rule:

Action

Action Type Mask

Columns to mask

Table Name	Column Name	Masking Function
. *Proc_Dept_Emp.*	. *SALARY	999
. *Proc_Dept_Emp.*	. *COMM	substring(convert(varchar, \(...
. *Proc_Dept_Emp.*	. *LAST_NAME	substring(\(col), 1, 2)

+ -

3. Click **OK**.
The **Rule Editor** closes.
4. Click **File > Update Rules** to save the security rule.
5. Click **File > Exit** to close the **Rule Editor**.

Step 8. Define Masking Rules

Define masking rules for each stored procedure.

For each stored procedure in the database, create a masking rule in the StoredProcMasks rule set. In the rule, you can add a row in the Mask rule action for each column that the stored procedure outputs. For information about masking rules, see the *Dynamic Data Masking User Guide*.

CHAPTER 3

Stored Procedure Accelerator Rules

This chapter includes the following topics:

- [Stored Procedure Accelerator Rules Overview, 29](#)
- [Connection Rule, 29](#)
- [StoredProc Rule Set, 30](#)
- [StoredProcMasks Rule Set, 32](#)

Stored Procedure Accelerator Rules Overview

The Stored Procedure Accelerator for Sybase contains template rules and sample rules that you can edit or copy to create rules based on the stored procedures in the database.

To use the accelerator, you must create a connection rule and two rule sets. The connection rule directs requests to the first rule set. The first rule set contains rules to set up the accelerator. The second rule set contains masking rules. You can import the accelerator rule sets and configure the rules based on the stored routines in the database.

You can find the .xml files that contain the accelerator rule sets in the following location:

```
<Dynamic Data Masking installation>\Accelerators\StoredProcedureMasking\rules\Sybase
```

The Sybase_StoredProcMasksRSTmpl.xml and Sybase_StoredProcRSTmpl.xml files contain the template rule sets. You can import the template rule sets and configure the rules to mask stored procedures.

The Sybase_HRStoredProcRS.xml and Sybase_HRStoredProcMasksRS.xml files contain the example HR rule sets. You can view the example rules to see how a complete rule set looks.

Connection Rule

A Dynamic Data Masking connection rule directs the SQL request to the StoredProcTmpl security rule set.

You must create a connection rule in the Dynamic Data Masking Management Console to use the accelerator. Configure the connection rule to identify the incoming connection. For example, you can identify the incoming connection by the database type. Select the Use Rule Set action and define the StoredProcTmpl rule set name or the name of the rule set that you create that contains the accelerator setup rules. Select the

Stop if Applied processing action. If the client makes a request to the database, the Rule Engine applies the rule set.

StoredProc Rule Set

The StoredProc rule set contains three rules that identify requests, define the ExplicitRuleSet symbol, and call the accelerator .jar files.

The StoredProc template rule set is the Sybase_StoredProcRSTmpl.xml file in the accelerator directory. To use the template rules, create a rule set with the name StoredProcTmpl and import the rules into the rule set.

The StoredProc example HR rule set is the Sybase_HRStoredProcRS.xml file in the accelerator directory. To use the example rules, create a rule set with the name HRStoredProcRS and import the rules into the rule set.

You can also create a rule set with any name and create rules in the rule set based on the template rules and example rules.

MatchProcNamesFolder Rule

The MatchProcNamesFolder rule identifies requests that call stored procedures and directs them through the rule set.

The first rule in the StoredProc rule set is the MatchProcNamesFolder rule. The rule identifies requests to restrict the number of requests that go through the masking rules, which improves performance. The database may have stored procedures that you do not want Dynamic Data Masking to affect the results of, such as maintenance stored procedures. Configure the MatchProcNamesFolder rule so that those stored procedures are not a match for the rule.

You can use any matcher to identify incoming requests that call stored procedures. For example, if the names of the stored procedures in the database begin with Proc_, you can use a regular expression to identify requests that contain Proc_.

The MatchProcNamesFolder has the following parameters:

Rule Name

The rule name is MatchProcNamesFolder.

Matcher

The rule uses the Text matcher. You can change the matcher based on how you want to identify stored procedures.

Text

You can use regular expressions in the Text parameter to identify stored procedures.

Rule Action

The rule uses the Folder action. The Folder action creates a rule folder.

Processing Action

The rule uses the Stop if Matched action.

DefMaskRSSym Rule

The DefMaskRSSym rule creates the ExplicitRuleSet, TEMPDB, and TEMPSHEMA symbols.

Use the ExplicitRuleSet, TEMPDB, and TEMPSHEMA symbols to define the security rule set, the temporary database, and the temporary schema.

The DefMaskRSSym rule has the following properties:

Name

The name of the rule is DefMaskRSSym.

Matcher

The rule uses the Any matcher.

Rule Action

The rule uses the Define Symbol rule action. Do not change the rule action.

Keep Per Session

Enter No to create symbols that only exist during the current SQL request.

Define the following symbols in the rule action:

ExplicitRuleSet

The ExplicitRuleSet symbol defines the security rule set that contains the masking rules. The symbol value is the name of the rule set. If you want to use the template rules, enter StoredProcMasksTmpl in the Symbol Value field. If you want to use the HR example rule set, enter HRStoredProcMasksRS.

TEMPDB

The TEMPDB symbol defines the name of the temporary database where you want Dynamic Data Masking to create temporary tables and stored procedures. The symbol value is the name of the temporary database. If you do not define the TEMPDB symbol, Dynamic Data Masking uses the default value, tempdb.

TEMPSHEMA

The TEMPSHEMA symbol defines the name of the schema in the temporary database where you want Dynamic Data masking to create temporary tables and stored procedures. The symbol value is the name of the temporary schema. If you do not define the TEMPSHEMA symbol, Dynamic Data Masking uses the default value, dbo.

MaskProcs Rule

The MaskProcs rule specifies the location of the stored procedure accelerator .jar files.

The MaskProcs rule uses the Any matcher so that the rule applies to all requests. It uses the Java Action rule action to identify the Stored Procedure .jar files. The Class Name must be ProcMaskerSybase.

The MaskProcs rule has the following parameters:

Name

The name of the rule is MaskProcs.

Matcher

The rule uses the Any matcher so that the rule applies to all requests.

Rule Action

The rule uses the Java Action rule action. Do not change the rule action.

Class Path

Enter the file paths of the accelerator .jar files, separated by a semicolon (;). You can find the .jar files in the following location:

```
<Dynamic Data Masking installation>\Accelerators\StoredProcedureMasking\lib
```

For example, you might enter:

```
C:\Program Files\Informatica\DDM\Accelerators\StoredProcedureMasking\lib  
\StoredProcedureMasking.jar;C:\Program Files\Informatica\DDM\Accelerators  
\StoredProcedureMasking\lib\MultipleStatementMasking.jar
```

Class Name

The class name is ProcMaskerSybase. Do not change the class name.

Processing Action

The rule uses the Continue processing action.

StoredProcMasks Rule Set

The StoredProcMasks rule set contains a masking rule for stored procedures.

You can add as many masking rules to the StoredProcMasks rule set as required. You must create a separate rule for each stored procedure. The predefined rule sets contains a rule that shows you how to mask a stored procedure.

The StoredProcMasks template rule set is the Sybase_StoredPRocMasksRSTmpl.xml file in the accelerator directory. To use the template rules, create a rule set with the name StoredProcMasksTmpl and import the rules into the rule set.

The StoredProcMasks example HR rule set is the Sybase_HRStoredProcRS.xml file in the accelerator directory. To use the example rules, create a rule set with the name HRStoredProcMasksRS and import the rules into the rule set.

You can also create a rule set with any name and create masking rules in the rule set based on the template rules and example rules.

Note: You must identify the StoredProcMasks rule set name in the DefMaskRSSym rule when you define the symbol value. If you change the name of the StoredProcMasks rule set, update the Value field in the DefMaskRSSym rule.

ProcMasks1 Rule

The ProcMasks1 rule masks a stored procedure.

You can configure the ProcMasks1 rule to mask a stored procedure. Add a row in the rule action for each column that the procedure outputs. Create a rule for each stored procedure.

The ProcMasks1 rule has the following values:

Name

The name of the rule is ProcMasks1. You can change the name of the rule based on the name of the stored procedure.

Matcher

The rule uses the Any matcher.

Rule Action

The rule uses the Mask rule action.

Table Name

Enter the name of the stored procedure, preceded and followed by `.*`. For example, you might enter:

```
.*Proc_EMPLOYEE.*
```

If the stored procedure name contains a semicolon (`;`), replace the semicolon with an underscore (`_`) in the Table Name parameter. For example, if you have a stored procedure with the following name:

```
DDM_GetEmployeeName;3.
```

Enter the following text in the Table Name parameter:

```
.* DDM_GetEmployeeName_3.*
```

Column Name

The name of the column that you want to mask, preceded by `.*`. For example, you might enter:

```
.*SALARY
```

Masking Function

The masking function that you want to use to mask the column data.

Processing Action

The rule uses the Continue processing action.

INDEX

A

accelerator
 components [9](#)
 example [10](#)
 maintenance [10](#)
 masking [8](#)
 overview [8](#)
 rules [29](#)
 setup [12](#)

C

cleanup procedure
 create [14](#)
 components [9](#)
 connection rule
 creating [22](#)

D

DefMaskRSSym
 rule [31](#)

M

maintenance [10](#)
masking [8](#)
MaskProcs
 rule [31](#)
MatchProcNamesFolder
 rule [30](#)

P

procedure
 cleanup [14](#)

ProcMasks1
 rule [32](#)

R

requirements [13](#)
rule set
 importing [24](#)
 StoredProcMasks [32](#)
 StoreProc [30](#)
rules
 connection rule [29](#)
 DefMaskRSSym [31](#)
 masking rules [28](#)
 MaskProcs [31](#)
 MatchProcNamesFolder [30](#)
 overview [29](#)
 ProcMasks1 [32](#)
 StoredProc [24](#)
 StoredProcMasks [27](#)

S

set up
 create the cleanup procedure [14](#)
setup
 database connection [21](#)
 StoredProc rule set [24](#)
 StoredProcMasks rule set [27](#)
 verify requirements [13](#)
StoredProc
 configuring [24](#)
 importing [24](#)
 rule set [30](#)
StoredProcMasks
 configuring [27](#)
 importing [27](#)
 rule set [32](#)