



Informatica®

Informatica® Cloud Application Integration
November 2024

Getting Started

© Copyright Informatica LLC 1993, 2024

This software and documentation contain proprietary information of Informatica LLC and are provided under a license agreement containing restrictions on use and disclosure and are also protected by copyright law. Reverse engineering of the software is prohibited. No part of this document may be reproduced or transmitted in any form, by any means (electronic, photocopying, recording or otherwise) without prior consent of Informatica LLC. This Software may be protected by U.S. and/or international Patents and other Patents Pending.

Use, duplication, or disclosure of the Software by the U.S. Government is subject to the restrictions set forth in the applicable software license agreement and as provided in DFARS 227.7202-1(a) and 227.7702-3(a) (1995), DFARS 252.227-7013(1)(ii) (OCT 1988), FAR 12.212(a) (1995), FAR 52.227-19, or FAR 52.227-14 (ALT III), as applicable.

The information in this product or documentation is subject to change without notice. If you find any problems in this product or documentation, please report them to us in writing.

Informatica, Informatica Platform, Informatica Data Services, PowerCenter, PowerCenterRT, PowerCenter Connect, PowerCenter Data Analyzer, PowerExchange, PowerMart, Metadata Manager, Informatica Data Quality, Informatica Data Explorer, Informatica B2B Data Transformation, Informatica B2B Data Exchange Informatica On Demand, Informatica Identity Resolution, Informatica Application Information Lifecycle Management, Informatica Complex Event Processing, Ultra Messaging, Informatica Master Data Management, and Live Data Map are trademarks or registered trademarks of Informatica LLC in the United States and in jurisdictions throughout the world. All other company and product names may be trade names or trademarks of their respective owners.

Portions of this software and/or documentation are subject to copyright held by third parties, including without limitation: Copyright DataDirect Technologies. All rights reserved. Copyright © Sun Microsystems. All rights reserved. Copyright © RSA Security Inc. All Rights Reserved. Copyright © Ordinal Technology Corp. All rights reserved. Copyright © Aandacht c.v. All rights reserved. Copyright Genivia, Inc. All rights reserved. Copyright Isomorphic Software. All rights reserved. Copyright © Meta Integration Technology, Inc. All rights reserved. Copyright © Intalio. All rights reserved. Copyright © Oracle. All rights reserved. Copyright © Adobe Systems Incorporated. All rights reserved. Copyright © DataArt, Inc. All rights reserved. Copyright © ComponentSource. All rights reserved. Copyright © Microsoft Corporation. All rights reserved. Copyright © Rogue Wave Software, Inc. All rights reserved. Copyright © Teradata Corporation. All rights reserved. Copyright © Yahoo! Inc. All rights reserved. Copyright © Glyph & Cog, LLC. All rights reserved. Copyright © Thinkmap, Inc. All rights reserved. Copyright © Clearpace Software Limited. All rights reserved. Copyright © Information Builders, Inc. All rights reserved. Copyright © OSS Nokalva, Inc. All rights reserved. Copyright Edifecs, Inc. All rights reserved. Copyright Cleo Communications, Inc. All rights reserved. Copyright © International Organization for Standardization 1986. All rights reserved. Copyright © ej-technologies GmbH. All rights reserved. Copyright © Jaspersoft Corporation. All rights reserved. Copyright © International Business Machines Corporation. All rights reserved. Copyright © yWorks GmbH. All rights reserved. Copyright © Lucent Technologies. All rights reserved. Copyright © University of Toronto. All rights reserved. Copyright © Daniel Veillard. All rights reserved. Copyright © Unicode, Inc. Copyright IBM Corp. All rights reserved. Copyright © MicroQuill Software Publishing, Inc. All rights reserved. Copyright © PassMark Software Pty Ltd. All rights reserved. Copyright © LogiXML, Inc. All rights reserved. Copyright © 2003-2010 Lorenzi Davide, All rights reserved. Copyright © Red Hat, Inc. All rights reserved. Copyright © The Board of Trustees of the Leland Stanford Junior University. All rights reserved. Copyright © EMC Corporation. All rights reserved. Copyright © Flexera Software. All rights reserved. Copyright © Jinfonet Software. All rights reserved. Copyright © Apple Inc. All rights reserved. Copyright © Teleric Inc. All rights reserved. Copyright © BEA Systems. All rights reserved. Copyright © PDFlib GmbH. All rights reserved. Copyright © Orientation in Objects GmbH. All rights reserved. Copyright © Tanuki Software, Ltd. All rights reserved. Copyright © Ricebridge. All rights reserved. Copyright © Sencha, Inc. All rights reserved. Copyright © Scalable Systems, Inc. All rights reserved. Copyright © jQWidgets. All rights reserved. Copyright © Tableau Software, Inc. All rights reserved. Copyright © MaxMind, Inc. All Rights Reserved. Copyright © TMate Software s.r.o. All rights reserved. Copyright © MapR Technologies Inc. All rights reserved. Copyright © Amazon Corporate LLC. All rights reserved. Copyright © Highsoft. All rights reserved. Copyright © Python Software Foundation. All rights reserved. Copyright © BeOpen.com. All rights reserved. Copyright © CNRI. All rights reserved.

This product includes software developed by the Apache Software Foundation (<http://www.apache.org/>), and/or other software which is licensed under various versions of the Apache License (the "License"). You may obtain a copy of these Licenses at <http://www.apache.org/licenses/>. Unless required by applicable law or agreed to in writing, software distributed under these Licenses is distributed on an "AS IS" BASIS, WITHOUT WARRANTIES OR CONDITIONS OF ANY KIND, either express or implied. See the Licenses for the specific language governing permissions and limitations under the Licenses.

This product includes software which was developed by Mozilla (<http://www.mozilla.org/>), software copyright The JBoss Group, LLC, all rights reserved; software copyright © 1999-2006 by Bruno Lowagie and Paulo Soares and other software which is licensed under various versions of the GNU Lesser General Public License Agreement, which may be found at <http://www.gnu.org/licenses/lgpl.html>. The materials are provided free of charge by Informatica, "as-is", without warranty of any kind, either express or implied, including but not limited to the implied warranties of merchantability and fitness for a particular purpose.

The product includes ACE(TM) and TAO(TM) software copyrighted by Douglas C. Schmidt and his research group at Washington University, University of California, Irvine, and Vanderbilt University, Copyright (©) 1993-2006, all rights reserved.

This product includes software developed by the OpenSSL Project for use in the OpenSSL Toolkit (copyright The OpenSSL Project. All Rights Reserved) and redistribution of this software is subject to terms available at <http://www.openssl.org> and <http://www.openssl.org/source/license.html>.

This product includes Curl software which is Copyright 1996-2013, Daniel Stenberg, <daniel@haxx.se>. All Rights Reserved. Permissions and limitations regarding this software are subject to terms available at <http://curl.haxx.se/docs/copyright.html>. Permission to use, copy, modify, and distribute this software for any purpose with or without fee is hereby granted, provided that the above copyright notice and this permission notice appear in all copies.

The product includes software copyright 2001-2005 (©) MetaStuff, Ltd. All Rights Reserved. Permissions and limitations regarding this software are subject to terms available at <http://www.dom4j.org/license.html>.

The product includes software copyright © 2004-2007, The Dojo Foundation. All Rights Reserved. Permissions and limitations regarding this software are subject to terms available at <http://dojotoolkit.org/license>.

This product includes ICU software which is copyright International Business Machines Corporation and others. All rights reserved. Permissions and limitations regarding this software are subject to terms available at <http://source.icu-project.org/repos/icu/icu/trunk/license.html>.

This product includes software copyright © 1996-2006 Per Bothner. All rights reserved. Your right to use such materials is set forth in the license which may be found at <http://www.gnu.org/software/kawa/Software-License.html>.

This product includes OSSP UUID software which is Copyright © 2002 Ralf S. Engelschall, Copyright © 2002 The OSSP Project Copyright © 2002 Cable & Wireless Deutschland. Permissions and limitations regarding this software are subject to terms available at <http://www.opensource.org/licenses/mit-license.php>.

This product includes software developed by Boost (<http://www.boost.org/>) or under the Boost software license. Permissions and limitations regarding this software are subject to terms available at http://www.boost.org/LICENSE_1_0.txt.

This product includes software copyright © 1997-2007 University of Cambridge. Permissions and limitations regarding this software are subject to terms available at <http://www.pcre.org/license.txt>.

This product includes software copyright © 2007 The Eclipse Foundation. All Rights Reserved. Permissions and limitations regarding this software are subject to terms available at <http://www.eclipse.org/org/documents/epl-v10.php> and at <http://www.eclipse.org/org/documents/edl-v10.php>.

This product includes software licensed under the terms at <http://www.tcl.tk/software/tcltk/license.html>, <http://www.bosrup.com/web/overlib/?License>, <http://www.stlport.org/doc/license.html>, <http://asm.ow2.org/license.html>, <http://www.cryptix.org/LICENSE.TXT>, <http://hsqldb.org/web/hsqldbLicense.html>, <http://httpunit.sourceforge.net/doc/license.html>, <http://jung.sourceforge.net/license.txt>, http://www.gzip.org/zlib/zlib_license.html, <http://www.openldap.org/software/release/license.html>, <http://www.libssh2.org>, <http://slf4j.org/license.html>, <http://www.sente.ch/software/OpenSourceLicense.html>, <http://fusesource.com/downloads/license-agreements/fuse-message-broker-v-5-3-license-agreement>; <http://antlr.org/license.html>; <http://aopalliance.sourceforge.net/>; <http://www.bouncycastle.org/license.html>; <http://www.jgraph.com/jgraphdownload.html>; <http://www.jcraft.com/jsch/LICENSE.txt>; http://jotm.objectweb.org/bsd_license.html; <http://www.w3.org/Consortium/Legal/2002/copyright-software-20021231>; <http://www.slf4j.org/license.html>; <http://nanoxml.sourceforge.net/orig/copyright.html>; <http://www.json.org/license.html>; <http://forge.ow2.org/projects/javaservice/>; <http://www.postgresql.org/about/license.html>, <http://www.sqlite.org/copyright.html>, <http://www.tcl.tk/software/tcltk/license.html>, <http://www.jaxen.org/faq.html>, <http://www.jdom.org/docs/faq.html>, <http://www.slf4j.org/license.html>; <http://www.iodbc.org/dataspace/iodbc/wiki/IODBC/License>; <http://www.keplerproject.org/md5/license.html>; <http://www.toedter.com/en/jcalendar/license.html>; <http://www.edankert.com/bounce/index.html>; <http://www.net-snmp.org/about/license.html>; <http://www.openmdx.org/#FAQ>; http://www.php.net/license/3_01.txt; <http://srp.stanford.edu/license.txt>; <http://www.schneier.com/blowfish.html>; <http://www.jmock.org/license.html>; <http://xsom.java.net>; <http://benalman.com/about/license/>; <https://github.com/CreateJS/EaselJS/blob/master/src/easeljs/display/Bitmap.js>; <http://www.h2database.com/html/license.html#summary>; <http://jsoncpp.sourceforge.net/LICENSE>; <http://jdbc.postgresql.org/license.html>; <http://protobuf.googlecode.com/svn/trunk/src/google/protobuf/descriptor.proto>; <https://github.com/rantav/hector/blob/master/LICENSE>; <http://web.mit.edu/Kerberos/krb5-current/doc/mitK5license.html>; <http://jibx.sourceforge.net/jibx-license.html>; <https://github.com/lyokato/libgeohash/blob/master/LICENSE>; <https://github.com/hjiang/jsonxx/blob/master/LICENSE>; <https://code.google.com/p/lz4/>; <https://github.com/jedisct1/libsodium/blob/master/LICENSE>; <http://one-jar.sourceforge.net/index.php?page=documents&file=license>; <https://github.com/EsotericSoftware/kryo/blob/master/license.txt>; <http://www.scala-lang.org/license.html>; <https://github.com/tinkerpop/blueprints/blob/master/LICENSE.txt>; <http://gee.cs.oswego.edu/dl/classes/EDU/oswego/cs/dl/util/concurrent/intro.html>; <https://aws.amazon.com/asl/>; <https://github.com/twbs/bootstrap/blob/master/LICENSE>; <https://sourceforge.net/p/xmlunit/code/HEAD/tree/trunk/LICENSE.txt>; <https://github.com/documentcloud/underscore-contrib/blob/master/LICENSE>, and <https://github.com/apache/hbase/blob/master/LICENSE.txt>.

This product includes software licensed under the Academic Free License (<http://www.opensource.org/licenses/afl-3.0.php>), the Common Development and Distribution License (<http://www.opensource.org/licenses/cddl1.php>) the Common Public License (<http://www.opensource.org/licenses/cpl1.0.php>), the Sun Binary Code License Agreement Supplemental License Terms, the BSD License (<http://www.opensource.org/licenses/bsd-license.php>), the new BSD License (<http://opensource.org/licenses/BSD-3-Clause>), the MIT License (<http://www.opensource.org/licenses/mit-license.php>), the Artistic License (<http://www.opensource.org/licenses/artistic-license-1.0>) and the Initial Developer's Public License Version 1.0 (<http://www.firebirdsql.org/en/initial-developer-s-public-license-version-1-0/>).

This product includes software copyright © 2003-2006 Joe Walnes, 2006-2007 XStream Committers. All rights reserved. Permissions and limitations regarding this software are subject to terms available at <http://xstream.codehaus.org/license.html>. This product includes software developed by the Indiana University Extreme! Lab. For further information please visit <http://www.extreme.indiana.edu/>.

This product includes software Copyright (c) 2013 Frank Balluffi and Markus Moeller. All rights reserved. Permissions and limitations regarding this software are subject to terms of the MIT license.

See patents at <https://www.informatica.com/legal/patents.html>.

DISCLAIMER: Informatica LLC provides this documentation "as is" without warranty of any kind, either express or implied, including, but not limited to, the implied warranties of noninfringement, merchantability, or use for a particular purpose. Informatica LLC does not warrant that this software or documentation is error free. The information provided in this software or documentation may include technical inaccuracies or typographical errors. The information in this software and documentation is subject to change at any time without notice.

NOTICES

This Informatica product (the "Software") includes certain drivers (the "DataDirect Drivers") from DataDirect Technologies, an operating company of Progress Software Corporation ("DataDirect") which are subject to the following terms and conditions:

1. THE DATADIRECT DRIVERS ARE PROVIDED "AS IS" WITHOUT WARRANTY OF ANY KIND, EITHER EXPRESSED OR IMPLIED, INCLUDING BUT NOT LIMITED TO, THE IMPLIED WARRANTIES OF MERCHANTABILITY, FITNESS FOR A PARTICULAR PURPOSE AND NON-INFRINGEMENT.
2. IN NO EVENT WILL DATADIRECT OR ITS THIRD PARTY SUPPLIERS BE LIABLE TO THE END-USER CUSTOMER FOR ANY DIRECT, INDIRECT, INCIDENTAL, SPECIAL, CONSEQUENTIAL OR OTHER DAMAGES ARISING OUT OF THE USE OF THE ODBC DRIVERS, WHETHER OR NOT INFORMED OF THE POSSIBILITIES OF DAMAGES IN ADVANCE. THESE LIMITATIONS APPLY TO ALL CAUSES OF ACTION, INCLUDING, WITHOUT LIMITATION, BREACH OF CONTRACT, BREACH OF WARRANTY, NEGLIGENCE, STRICT LIABILITY, MISREPRESENTATION AND OTHER TORTS.

Publication Date: 2024-11-06

Table of Contents

Preface	6
Chapter 1: Application Integration	7
Chapter 2: Quick Start	8
Chapter 3: System Requirements	9
Enabling CORS in Internet Explorer 11.	9
Modifying Browser History Settings.	13
Chapter 4: Installing Secure Agents	14
Installing in Windows.	14
Secure Agent requirements on Windows.	14
Downloading and installing the Secure Agent on Windows.	15
Configuring the proxy settings in Windows.	17
Configuring a login for a Windows Secure Agent service.	18
Installing in Linux.	18
Secure Agent requirements on Linux	19
Downloading and installing the Secure Agent on Linux.	20
Configuring the proxy settings in Linux.	21
Chapter 5: Connectors for Application Integration	22
Types of Connectors.	22
Informatica Cloud Connectors.	23
Listener-Based Connectors.	24
Chapter 6: Application Integration Home page	25
Recommendations for viewing Application Integration in modern view.	27
Chapter 7: Project setup	28
Creating Projects and Project Folders.	28
Creating Assets.	29
Chapter 8: Editing your user profile	30
Display options for Application Integration user interface.	31
Chapter 9: Switching to a different organization	33
Chapter 10: Informatica resources	34
Informatica Intelligent Cloud Services web site.	34
Informatica Intelligent Cloud Services Communities.	34

Informatica Intelligent Cloud Services Marketplace.	34
Informatica Intelligent Cloud Services Trust Center.	35
Informatica Global Customer Support.	35
Informatica Knowledge Base.	35
Legal.	35
Index.	40

Preface

Refer to *Getting Started* for information about how to begin using Informatica Intelligent Cloud ServicesSM Application Integration. The book also provides information about system requirements, installation of Secure Agents, and Application Integration connectors.

CHAPTER 1

Application Integration

With Application Integration and Application Integration Console, you can perform the web service based integration of processes, applications, and systems in real time.

Informatica Intelligent Cloud ServicesSM offers the Application Integration and Application Integration Console services that allow you to design, integrate, and implement business processes spanning different cloud and on-premises applications. Informatica's event-driven and service-oriented application integration capabilities encompass event processing, service orchestration, and process management. You can expose business services at cloud or on-premises service endpoints that are accessible by using SOAP, REST (XML or JSON), or MOM services.

You can access Application Integration if your organization has licensed this set of features. No additional installation is required. However, you may also need to configure a runtime environment with a Secure Agent.

To access Process Developer help, go to

<https://network.informatica.com/onlinehelp/process-developer/en/index.htm?>

CHAPTER 2

Quick Start

You can create an Application Integration project in just a few steps.

Step 1. Check System Requirements

Be sure you're using a compatible browser when you're designing your projects, and check the Informatica Cloud Product Availability Matrix for operating systems, databases, and other systems that Application Integration supports.

Step 2. Configure a Runtime Environment

A runtime environment is the execution platform for running tasks. A runtime environment consists of one or more Secure Agents. A Secure Agent is a lightweight program that runs tasks and enables secure communication across the firewall between your organization and Application Integration. You must have at least one runtime environment in each organization so that users in the organization can run tasks.

Secure Agent Groups

When you need to access data on-premises or when you want to access SaaS data without using the Hosted Agent, use a Secure Agent group. A Secure Agent group contains one or more Secure Agents. The agents in a group run within your network or in a cloud computing services environment such as Amazon Web Services or Microsoft Azure.

To create a Secure Agent group, download and install the Secure Agent. You can install one Secure Agent on each physical or virtual machine. Each agent that you install is added to its own group by default. Based on your license, you can add multiple agents to a group to balance workloads and improve scalability.

Step 3. Create a Connection

Before you can use Application Integration processes, you need to create a connection. When you configure the connection, you specify the connector that enables the exchange of data between Application Integration and the application you want to connect to. For example, if you want to create a task that uses Salesforce data, you create a Salesforce connection. The Salesforce connection uses the Salesforce connector which enables the exchange of data between Salesforce and Application Integration.

Step 4. Create your Project

Organize your Application Integration projects in folders that contain assets such as mappings, tasks, and taskflows. Create a project folder and folders to contain the assets you need for your project.

After you set up folders, create your project assets. Assets include the following objects:

- Processes
- Connections
- Process objects
- Service Connectors

CHAPTER 3

System Requirements

You can find information about system requirements in the Product Availability Matrix (PAM) for Informatica Intelligent Cloud Services. The PAM indicates the versions of browsers, operating systems, databases, and other types of data sources and targets that a product release supports. You can access the PAM on Informatica Network at

<https://network.informatica.com/community/informatica-network/product-availability-matrices/>.

Note: To use Microsoft Internet Explorer 11, you must perform the following tasks:

- Enable cross-origin support (CORS) in the browser
- Modify the browser history settings

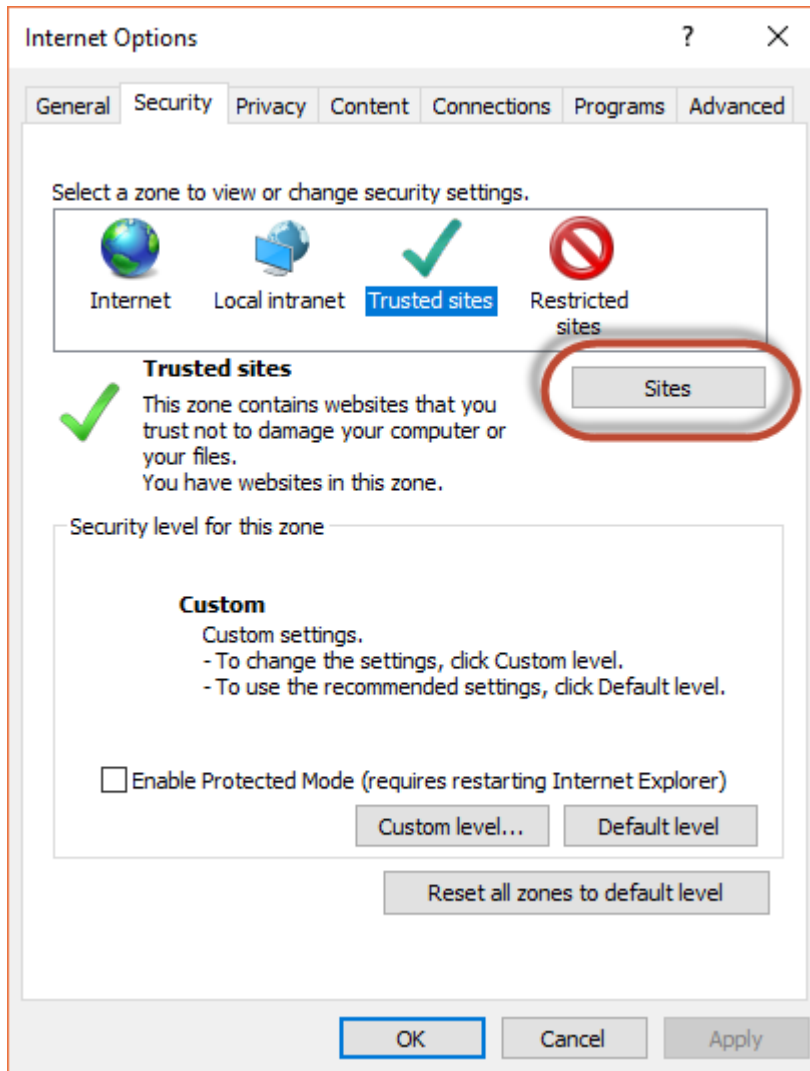
Enabling CORS in Internet Explorer 11

Informatica Intelligent Cloud Services requires that cross-origin support (CORS) be enabled in Internet Explorer 11. In Internet Explorer 11, CORS is not enabled by default.

Note: Some company security policies restrict the ability of users to enable CORS in a web browser. Before you update these settings, verify that your company or IT department allows you to change the CORS settings.

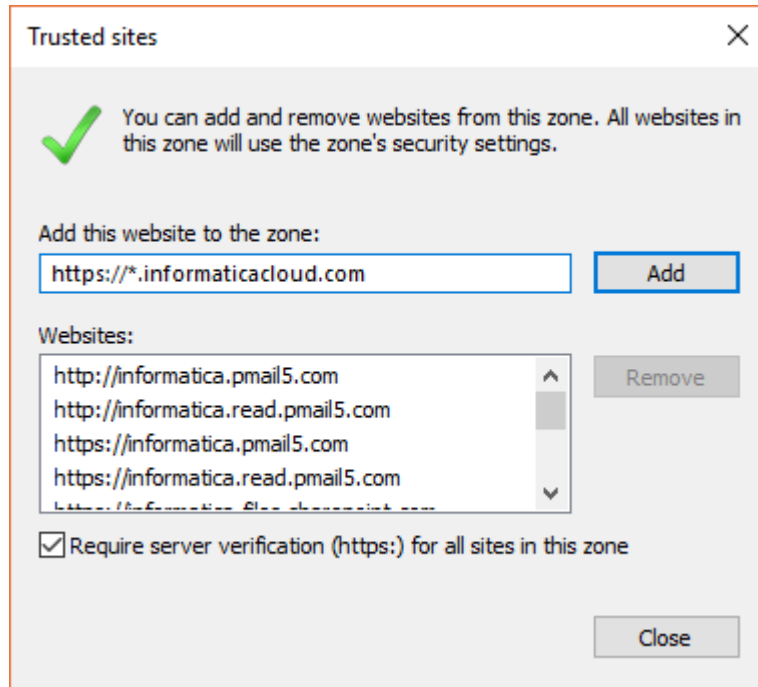
1. Open Internet Explorer 11.
2. On the **Tools** menu, select **Internet Options**.

3. On the **Security** tab, click **Trusted sites**, and then click **Sites** as shown in the following image:



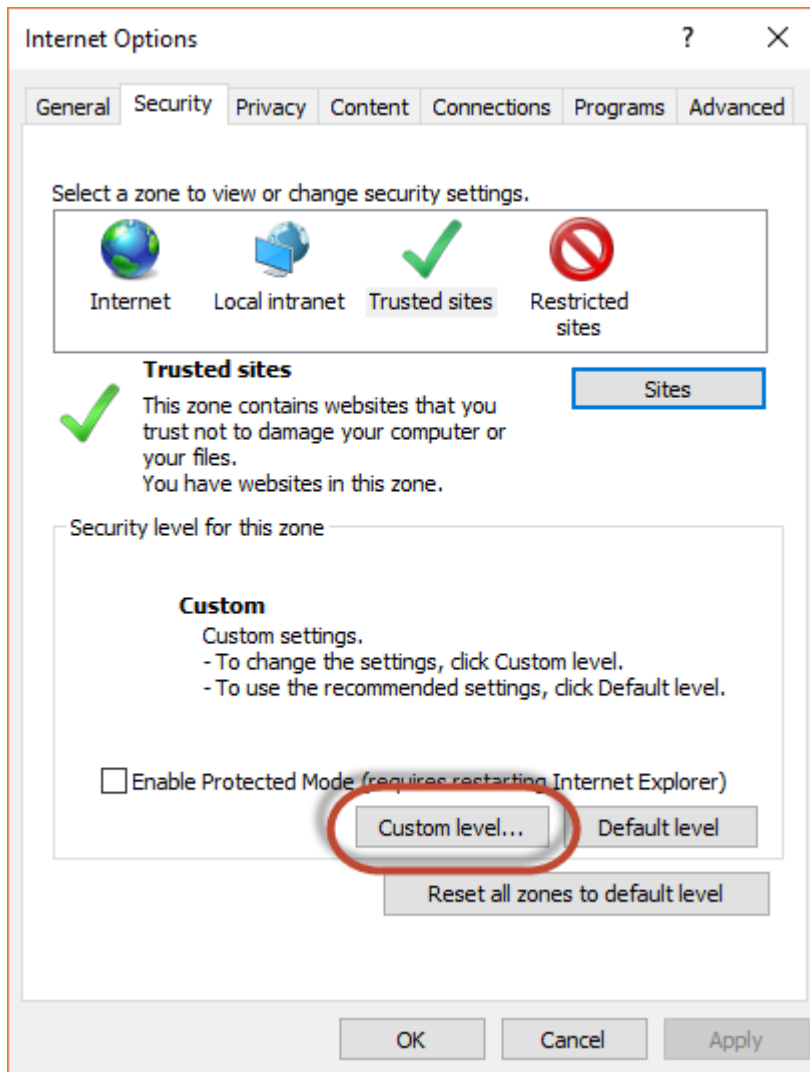
4. In the **Trusted Sites** dialog box, add the Informatica Intelligent Cloud Services domain to the zone, and click **Add**.

For example, the following image shows the domain `https://*.informaticacloud.com` added to the zone:

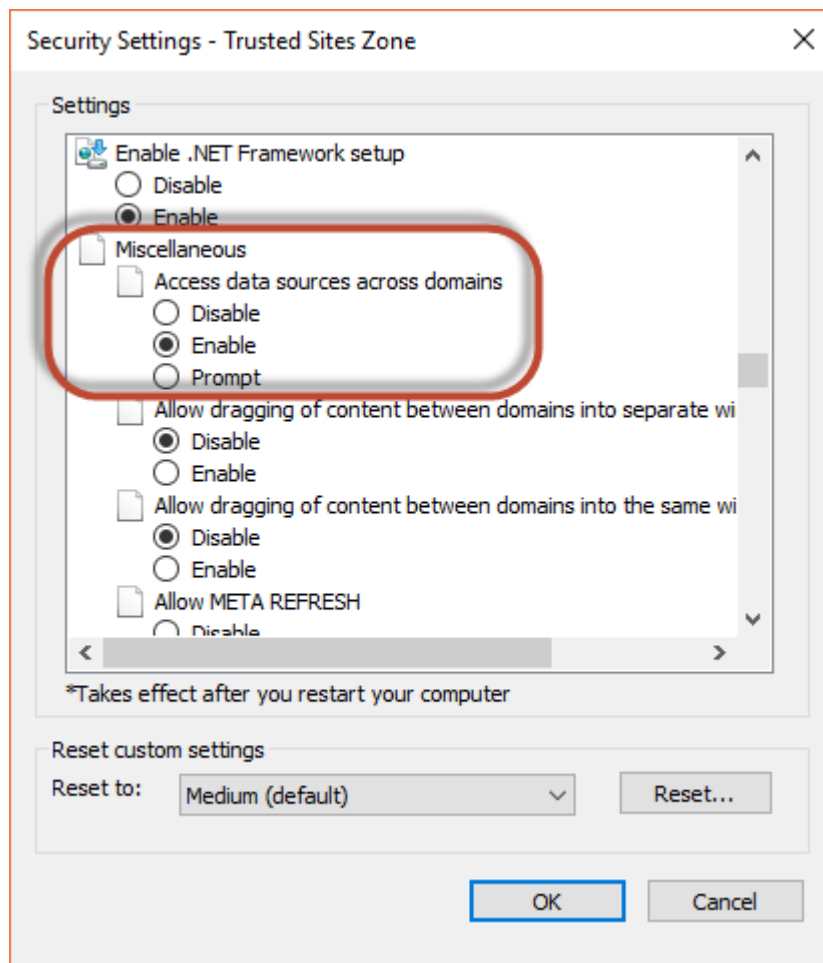


5. Click **Close**.

6. In the **Security level for this zone** area on the **Security** tab, click **Custom level** as shown in the following image:



7. In the **Security Settings - Trusted Sites Zone** dialog box, scroll down to the **Miscellaneous** heading, and enable **Access data sources across domains** as shown in the following image:



8. Click **OK**.
9. If prompted, confirm that you want to change the settings for the zone.
10. Click **OK**.
11. Restart Internet Explorer and re-open Informatica Intelligent Cloud Services.

Modifying Browser History Settings

Ensure that the browser checks for a new page version each time you visit a page.

Perform the following steps to change browser history settings:

1. In Microsoft Internet Explorer, go to **Tools > Internet Options**.
The **Internet Option** windows appears.
2. In the **General** tab, click **Settings** under the **Browsing history** section.
3. Under **Check for newer versions of stored pages**, select **Everytime I visit the webpage**.
4. Click **OK > OK**.

CHAPTER 4

Installing Secure Agents

You can install Secure Agents on Windows or Linux.

Note: On the Secure Agent machine, if you install third-party tools that utilize the Java Virtual Machine (JVM) agents for byte code injection, you might encounter issues. Informatica will not provide support for such issues that arise due to the usage of third-party tools.

Installing in Windows

On Windows, the Secure Agent runs as a Windows service. When you install the Secure Agent, you also install the Informatica Cloud Secure Agent Manager.

By default, the Secure Agent starts when you start Windows. You can stop and restart the Secure Agent using the Secure Agent Manager or Windows Services. If you install the Secure Agent on a different volume than you use to run the installation program, you must start and stop the Secure Agent from Windows Services.

You can also use the Secure Agent Manager to check the Secure Agent status and configure proxy information. The Secure Agent works with BASIC, DIGEST, and NTLMv2 proxy authentication.

You can launch the Secure Agent Manager from the Start menu or desktop icon. When you close the Secure Agent Manager, it minimizes to the Windows taskbar notification area for quick access.

When you install a Secure Agent, you perform the following tasks:

1. Verify that the machine meets the minimum requirements.
2. Download the Secure Agent installer files.
3. Install and register the Secure Agent.

Secure Agent requirements on Windows

You can install the Secure Agent on any machine that has internet connectivity and can access Informatica Intelligent Cloud Services.

Verify the following requirements before you install the Secure Agent on Windows:

- The Secure Agent machine uses a supported operating system. For the list of supported operating systems for the Secure Agent, see the [Product Availability Matrix \(PAM\) for Informatica Intelligent Cloud Services](#) on the Knowledge Base.
- The Secure Agent machine has the Microsoft Visual C++ 2015 Redistributable.
- The Secure Agent machine has at least 4 CPU cores, 16 GB RAM, and at least 5 GB of free disk space.

- The Secure Agent machine is on a volume with at least 250GB disk space, with at least 5 GB free space or three times the size of the Secure Agent installation, whichever is greater.
- The account you use to install the Secure Agent has access to all remote directories that contain flat source or target files.
- No other Secure Agent is installed on the machine. If another Secure Agent is installed on the machine, uninstall it first.

For more information, see this KB article:

[Minimum requirements and best practices when installing Informatica Cloud Secure Agent.](#)

Configure the firewall

If your organization uses a protective firewall, include the Informatica Intelligent Cloud Services domain name or IP address ranges in the list of approved domain names or IP addresses. To ensure that the Secure Agent can perform all necessary tasks through the firewall, enable the port that the Secure Agent uses.

The Secure Agent uses port 443 (HTTPS) to connect to the internet. Configure your firewall to allow traffic to pass over port 443.

The allowlists of domains and IP addresses can vary according to your POD (Point of Deployment). You can identify your POD through the URL that appears when you open any service in Informatica Intelligent Cloud Services. The first few characters of the URL string identify the POD. For example, if the URL starts with `usw3.dm-us.informaticacloud.com`, your POD is USW3.

For the allowlists of Informatica Intelligent Cloud Services domains and IP addresses for different PODs, see [Pod Availability and Networking](#) on the Documentation Portal or click the link at the top of the **Runtime Environments** page in Administrator.

Setting Secure Agent permissions on Windows

A Secure Agent requires certain permissions to transfer data between sources and targets.

When you install a Secure Agent on Windows, the Secure Agent must be part of the local Administrators group.

Configuring Windows settings

Before you use the Secure Agent on Windows, configure proxy settings and a Windows Secure Agent service login.

You can configure proxy settings in Secure Agent Manager. Configure a login for the Windows Secure Agent service on Windows.

Note: If you use the Secure Agent for Informatica Cloud Data Wizard, you do not need to configure proxy settings or a Windows service login for the Secure Agent.

Downloading and installing the Secure Agent on Windows

To install the Secure Agent on a Windows machine, you must download and run the Secure Agent installation program and then register the agent.

Secure Agent registration requires an install token. To get the install token, copy the token when you download the agent or use the **Generate Install Token** option in Administrator. The token expires after 24 hours.

Before you download and install the Secure Agent, verify that no other Secure Agent is installed on the machine. If any other Secure Agent exists, you must uninstall it.

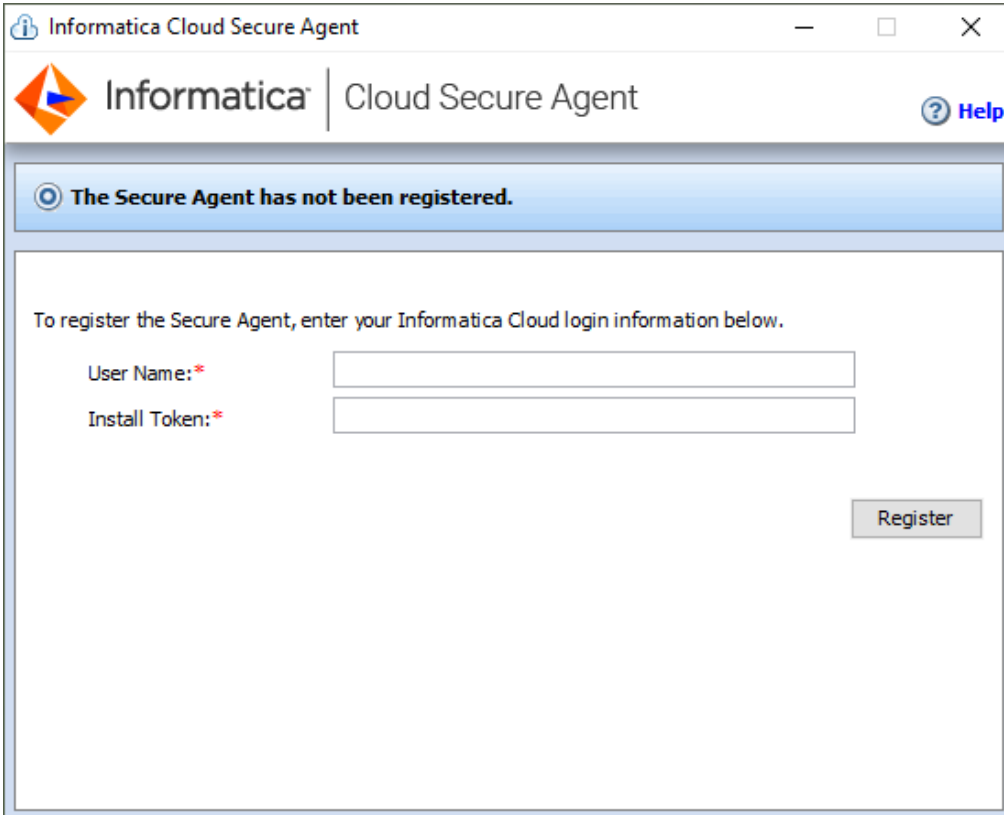
Tip: To verify the checksum of the Secure Agent installation program, use the agent REST API version 2 resource. For more information about the agent resource, see *REST API Reference*.

1. Open Administrator and select **Runtime Environments**.
2. On the **Runtime Environments** page, click **Download Secure Agent**.
3. Select the Windows 64-bit operating system platform, copy the install token, and then click **Download**.

The installation program is downloaded to your machine. The name of the installation program is `agent64_install_ng_ext.<agent core version>.exe`.

4. Run the installation program as an Administrator:
 - a. Specify the Secure Agent installation directory, and click **Next**.
 - b. Click **Install** to install the agent.

The **Cloud Secure Agent** dialog box opens and prompts you to register the agent as shown in the following image:



The screenshot shows a Windows-style dialog box titled "Informatica Cloud Secure Agent". The window has a standard title bar with minimize, maximize, and close buttons. Below the title bar is a header area containing the Informatica logo on the left, the text "Informatica | Cloud Secure Agent" in the center, and a "Help" button with a question mark icon on the right. A prominent blue banner with a circular icon on the left contains the text "The Secure Agent has not been registered." Below the banner, the main content area contains the instruction "To register the Secure Agent, enter your Informatica Cloud login information below." followed by two text input fields. The first field is labeled "User Name:*" and the second is labeled "Install Token:*". A "Register" button is positioned at the bottom right of the dialog box.

5. If you did not copy the install token when you downloaded the agent, click **Generate Install Token** on the **Runtime Environments** page in Administrator, and copy the token.

- In the Secure Agent Manager, enter the following information, and then click **Register**:

Option	Description
User Name	User name that you use to access Informatica Intelligent Cloud Services.
Install Token	Token that you copied.

The Secure Agent Manager displays the status of the Secure Agent. It takes a minute for all of the services to start.

- If your organization uses an outgoing proxy server to connect to the internet, enter the proxy server information.
- Close the Secure Agent Manager.

The Secure Agent Manager minimizes to the taskbar and continues to run as a service until stopped.

Configuring the proxy settings in Windows

If your organization uses an outgoing proxy server to connect to the internet, the Secure Agent connects to Informatica Intelligent Cloud Services through the proxy server. The Secure Agent installer configures the proxy server settings for the Secure Agent based on settings configured in the browser. You can change the proxy server settings through the Secure Agent Manager.

Contact your network administrator for the correct proxy settings.

Note: Don't update your proxy details by manually updating the proxy configuration file, because this might cause issues. Always use the Secure Agent Manager.

- In the Secure Agent Manager, click **Proxy**.
- To enter proxy server settings, click **Use a Proxy Server**.
- Enter the following information:

Field	Description
Proxy Host	Required. Host name of the outgoing proxy server that the Secure Agent uses.
Proxy Port	Required. Port number of the outgoing proxy server.
User Name	User name to connect to the outgoing proxy server.
Password	Password to connect to the outgoing proxy server.

- Click **OK**.

The Secure Agent Manager restarts the Secure Agent to apply the settings.

Configuring a login for a Windows Secure Agent service

On Windows, configure a network login for the Secure Agent service. The Secure Agent can access the network with the privileges and permissions associated with the login.

Configure a login for the Secure Agent machine to allow the Secure Agent to access directories to configure and run tasks. When you configure connections, configure tasks, and run tasks that use flat file or FTP/SFTP connection types, the Secure Agent might require read and write permissions on the related directories.

For example, to browse to a directory to configure a flat file or FTP/SFTP connection, the Secure Agent login might require permission to access the directory. Without a Secure Agent login with the appropriate permissions, Informatica Intelligent Cloud Services cannot display the directory in the **Browse for Directory** dialog box.

1. Go to the **Services** window from the Windows Administrative tools.
2. In the **Services** window, right-click the Informatica Cloud Secure Agent service and choose **Properties**.
3. In the **Properties** dialog box, click the **Log On** tab.
4. To configure a login, select **This Account**.
5. Enter an account and password.
Use an account with the required privileges and permissions for the network security defined for the domain. By default, the account format is <domain name>\<user name>.
6. Click **OK**.
7. In the **Services** window, restart the Secure Agent service for the changes to take effect.

Installing in Linux

On Linux, the Secure Agent runs as a process. You can use a shell command line to install, register, start, stop, and uninstall the Secure Agent.

You can also use the shell command line to check the Secure Agent status.

When you install a Secure Agent, you perform the following tasks:

1. Verify that the machine meets the minimum requirements.
2. Download the Secure Agent installer files.
3. Install and register the Secure Agent.

Consider the following guidelines:

- Create a specific user profile to install the Secure Agent with full access to all folders from the Secure Agent installation directory. Don't install the Secure Agent as the root user.
- You can't install more than one Secure Agent on the same machine under the same user account. Multiple agents may exist under different user accounts.
- Don't install the Secure Agent on any node within the Informatica domain.

Secure Agent requirements on Linux

You can install the Secure Agent on any machine that has internet connectivity and can access Informatica Intelligent Cloud Services. Before you install the Secure Agent on Linux, verify the system requirements.

Verify the following requirements before you install the Secure Agent on Linux:

- Verify that the machine uses a supported operating system. For the list of supported operating systems for the Secure Agent, see the [Product Availability Matrix \(PAM\) for Informatica Intelligent Cloud Services](#) on the Knowledge Base.

- Verify that the machine has at least 11 GB free disk space.

- Verify that the `libidn.x86_64` package is installed.

If the package isn't present, install it using the following command: `sudo yum install libidn.x86_64`

Note: The command to install the package might vary based on your Linux distribution.

- Verify that the `libidn.so.*` libraries are installed.

If the libraries aren't present, install them using the following commands:

- For 64-bit systems: `cd /usr/lib/x86_64-linux-gnu`

- For 32-bit systems: `cd /usr/lib/i386-linux-gnu`

After installing the libraries, create a symbolic link using the following command:

```
sudo ln -s libidn.so.12 libidn.so.11
```

- If you are installing the Secure Agent on RHEL 9, verify that the `libnsl` library is installed.

If the library isn't present, install it using the following command: `sudo yum install libnsl`

Note: The command to install the package might vary based on your Linux distribution.

To verify whether `libnsl` is present, use one of the following commands: `ldconfig -p | grep libnsl` or `which libnsl`.

- The account that you use to install the Secure Agent must have access to all remote directories that contain flat source or target files.

- If you use PowerCenter, install the Secure Agent using a different user account than the account you used to install PowerCenter.

Informatica Intelligent Cloud Services and PowerCenter use some common environment variables. If the environment variables are not set correctly for Informatica Intelligent Cloud Services, your jobs might fail at run time.

For more information, see this KB article:

[Minimum requirements and best practices when installing Informatica Cloud Secure Agent.](#)

Configure the firewall

If your organization uses a protective firewall, include the Informatica Intelligent Cloud Services domain name or IP address ranges in the list of approved domain names or IP addresses. To ensure that the Secure Agent can perform all necessary tasks through the firewall, enable the port that the Secure Agent uses.

The Secure Agent uses port 443 (HTTPS) to connect to the internet. Configure your firewall to allow traffic to pass over port 443.

The allowlists of domains and IP addresses can vary according to your POD (Point of Deployment). You can identify your POD through the URL that appears when you open any service in Informatica Intelligent Cloud Services. The first few characters of the URL string identify the POD. For example, if the URL starts with `usw3.dm-us.informaticacloud.com`, your POD is USW3.

For the allowlists of Informatica Intelligent Cloud Services domains and IP addresses for different PODs, see [Pod Availability and Networking](#) on the Documentation Portal or click the link at the top of the **Runtime Environments** page in Administrator.

Setting Secure Agent permissions on Linux

A Secure Agent requires certain permissions to transfer data between sources and targets.

When you install a Secure Agent on Linux, the Secure Agent must have read/write/execute permissions for the installation directory.

Downloading and installing the Secure Agent on Linux

To install the Secure Agent on a Linux machine, you must download and run the Secure Agent installation program and then register the agent.

Secure Agent registration requires an install token. To get the install token, copy the token when you download the agent or use the **Generate Install Token** option in Administrator. The token expires after 24 hours.

When you register the agent, it is added to its own Secure Agent group by default. You can add the agent to a different Secure Agent group.

Before you download and install the Secure Agent, verify that no other Secure Agent is installed on the machine using the same Linux user account. If there is, you must uninstall it.

Tip: To verify the checksum of the Secure Agent installation program, use the agent REST API version 2 resource. For more information about the agent resource, see *REST API Reference*.

1. Open Administrator and select **Runtime Environments**.
2. On the **Runtime Environments** page, click **Download Secure Agent**.
3. Select the Linux 64-bit operating system platform, copy the install token, and then click **Download**.
The installation program is downloaded to your machine. The name of the installation program is `agent64_install_ng_ext.<agent core version>.bin`.
4. Save the installation program to a directory on the machine where you want to run the Secure Agent.
Note: If the file path contains spaces, the installation might fail.
5. From a shell command line, navigate to the directory where you downloaded the installation program and enter the following command:

```
./agent64_install_ng_ext.bin -i console
```

6. When the installer completes, navigate to the following directory:

```
<Secure Agent installation directory>/apps/agentcore
```

7. To start the Secure Agent, enter the following command:

```
./infaagent startup
```

The Secure Agent Manager starts. You must register the agent using the user name that you use to access Informatica Intelligent Cloud Services. You must also supply the install token.

8. If you did not copy the install token when you downloaded the agent, click **Generate Install Token** on the **Runtime Environments** page in Administrator, and copy the token.

- To register the agent, in the `<Secure Agent installation directory>/apps/agentcore` directory, enter one of the following commands using your Informatica Intelligent Cloud Services user name and the token that you copied:

- To add the agent to its own Secure Agent group, use the following command:

```
./consoleAgentManager.sh configureToken <user name> <install token>
```

- To add the agent to an existing Secure Agent group, use the following command:

```
./consoleAgentManager.sh configureTokenWithRuntime <user name> <install token>
<Secure Agent group name>
```

Note: If the command includes a Secure Agent group name that doesn't exist, the Secure Agent is not assigned to a group. Be sure to use a valid Secure Agent group name.

The following table lists the command options:

Option	Description
User Name	Required. Informatica Intelligent Cloud Services user name of the user installing the Secure Agent.
Install Token	Required. The install token that you copied.
Secure Agent group name	Optional. Include when you want to add the agent to an existing Secure Agent group instead. If this option isn't included in the command, the agent will be in its own Secure Agent group.

You can check the registration status of a Secure Agent using the following command:

```
./consoleAgentManager.sh isConfigured
```

Configuring the proxy settings in Linux

If your organization uses an outgoing proxy server to connect to the internet, the Secure Agent connects to Informatica Intelligent Cloud Services through the proxy server.

The Secure Agent installer configures the proxy server settings for the Secure Agent based on settings configured in the browser. You can update the proxy server settings defined for the Secure Agent from the command line. The Secure Agent works with BASIC, DIGEST, and NTLMv2 proxy authentication.

To configure the proxy server settings for the Secure Agent on a Linux machine, use a shell command that updates the `proxy.ini` file. Contact the network administrator to determine the proxy settings.

Note: To avoid potential issues, don't change the settings by editing the `proxy.ini` file manually.

- Navigate to the following directory:

```
<Secure Agent installation directory>/apps/agentcore/conf
```

- To update the `proxy.ini` file, enter the following command:

```
./consoleAgentManager.sh configureProxy <proxy host> <proxy port> <proxy user name>
<proxy password>
```

- Restart the Secure Agent.

CHAPTER 5

Connectors for Application Integration

Application Integration offers multiple connectors designed to work with the connections and processes you configure for integration with web services and applications. All the supported connectors allow you to interact with services or data sources outside Informatica Intelligent Cloud Services™. You can also run specific operations against an API, web service, or database.

Types of Connectors

You can use the following types of connectors:

Application Integration Connectors

Application Integration connectors are designed to access data to and from the cloud for each of your applications. Connectors for JDBC, Workday, SAP, OData, and Salesforce are in this category.

Message-Based Connectors

Message-based connectors are designed so you can configure queue-based message brokers like ActiveMQ and JMS. The AMQP and Amazon SQS connectors are in this category.

Listener-Based Connectors

Listener-based connectors are designed to perform the following tasks:

- Monitor file-based systems for files or objects on a file system or other type of storage. You can retrieve files and process the contents of the files or perform file operations like moving or reading file metadata. For example, you can parse comma-delimited file, make the file contents available in a process object as XML, and archive the processed file in another directory. The file or object metadata, such as the number of rows or time stamp, is also available in a process object. The File, FTP, and Amazon S3 connectors are in this category.
- Access event services to perform tasks like reading XML from a process object and creating comma-delimited files or reading binary files from a process stream and writing that binary content to the target file system.

Service Connectors

Service connectors are designed with Process Designer to specify the parameters and actions that associate with a specific service that you want to make available in a process.

Event Sources and Event Targets

With the listener-based connectors, you also define:

- Event Sources, which act as consumers or start events to trigger processes.
- Event Targets, which act as event services that you can use to invoke external systems.

Informatica Cloud Connectors

Informatica certifies that the following connectors work with Application Integration. If you want to certify a connector that is not in this list, contact your sales representative.

JDBC

JDBC (Java Database Connectivity) is a Java API that enables Java programs to execute SQL statements and interact with any SQL-compliant database. JDBC makes it possible to write a single database application that can run on different platforms and interact with different DBMS systems. Ensure that you use the latest database driver version that your database supports.

Note: Informatica provides two JDBC connectors: JDBC and JDBC_IC. Only the JDBC_IC connector is used by Application Integration.

OData

OData Connector helps you to integrate systems like SharePoint and Team Foundation Server that are OData compliant with other on-premise or cloud applications. It is a standardized protocol for creating and consuming data APIs. OData builds on core protocols like HTTP and commonly accepted methodologies like REST.

Salesforce

Salesforce Connector lets you create guides and processes that read information from and write information to Salesforce. Outbound messages from Salesforce can trigger processes that perform background processing of information and write information back to Salesforce.

SAP

You can use SAP BAPI Connector to integrate with SAP BAPIs and read, create, change, or delete data in SAP. SAP BAPI Connector is available as a service call in Informatica Cloud Application Integration. For example, to update the sales order data in SAP, you can configure an SAP BAPI connection to access the BAPI_SALESORDER_CHANGE function.

Workday

Workday Connector allows you to integrate data with Workday applications. For example, you can retrieve information about an employee and th employee's dependents or onboard a new hire.

Cloud Application Integration Connectors

Application Integration provides several connectors. For more information, see the documentation for the specific connector (such as Amazon S3 Connector or File Connector).

Listener-Based Connectors

Application Integration supports several types of listener-based connectors that can be used for event-based processing of messages and files. Process Designer exposes a wide range of attributes in the connectors so you can use many file listener properties when you configure a listener-based connection.

These connectors, like the AMQP Connector (message-based) and File Connector (file/storage-based), act as message brokers or file monitors that can be reused to make data objects, service calls, and events available to the Process Designer.

CHAPTER 6

Application Integration Home page

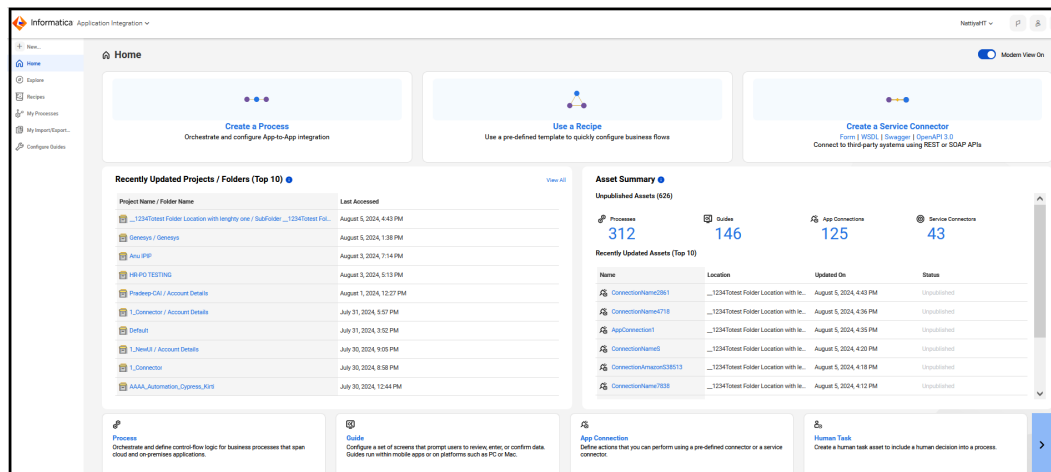
The Application Integration **Home** page provides panels to create assets, such as a process, guide, app connection, human task, service connector, and process object. The page is scaled to 100% zoom level by default.

When you select **Application Integration** from the **My Services** page, the Application Integration **Home** page appears in the classic view by default.

You can use the **Modern View On** toggle switch that is available on the **Home** page to switch the **Application Integration** user interface (UI) from the classic view to the modern view. In the modern view, the Application Integration UI has a new look and feel that presents the features you'll use in greater clarity.

Note: When you switch the view, all the tabs that were open will get closed. The selected view will be applied to all the Application Integration assets in the current organization until you switch the view again.

The following image shows the Application Integration **Home** page:



The **Home** page displays the following panels:

Create a Process

Use the panel to create a process to orchestrate and configure App-to-App integration. When you click the **Create a Process** panel, the process designer appears. The **Home** page also includes a **Process** panel at the bottom-right corner that you can use to create a process.

Use a Recipe

Use the panel to use recipes that contain a package of pre-configured assets. Using recipes, you can quickly onboard customers and create a process for various application integration use cases.

Create a Service Connector

Use the panel to create a service connector to access and interact with programs and services that expose an API. The **Home** page also includes a **Service Connector** panel at the bottom that you can use to create a service connector. To create a service connector, you can use a form, or import WSDL, Swagger, and OpenAPI 3.0 files. You can select DAS to create a data access service connector.

Recently Updated Projects / Folders (Top 10)

Use the panel to view and navigate to the top 10 projects or folders that contain the top 100 most recently modified assets.

Note: You might see fewer than 10 projects or folders in the panel if the top 100 most recently modified assets reside in fewer than 10 projects or folders. For example, if the top 100 most recently modified assets reside in 5 folders, the panel displays only 5 folders. If a recently created project or a folder does not contain any asset, the project or folder does not appear in the panel.

The **Last Accessed** field displays the last updated time and date of the most recently modified asset within the project or folder.

Click a project or folder to navigate to it.

Asset Summary

Use the panel to view a summary of unpublished assets and recently updated assets.

Use the **Unpublished Assets** panel to view the number of unpublished processes, guides, app connections, and service connectors in the organization.

Note: This panel does not include the count of outdated assets.

Use the **Recently Updated Assets (Top 10)** panel to view the top 10 assets that were most recently modified in the organization. You can also view the location, the last updated date and time, and the status of the assets.

Click an asset name to view the asset.

Guide

Use the panel to configure a set of screens that prompt users to review, enter, or confirm data. The guides run within mobile apps or on platforms such as PC or Mac.

App Connection

Use the panel to define actions that you can perform using a native connector or a service connector.

Human Task

Use the panel to create a human task asset to include a human decision into a process.

Process Object

Use the panel to group and structure data for use in a process. To create a process object, you can use a form, or import WSDL, Swagger, OpenAPI 3.0, and JSON files.

Recommendations for viewing Application Integration in modern view

Informatica recommends using the following guidelines for a good user experience when you use the modern view:

Large screen

1920 pixels on a wide screen with a full high-definition (HD) capability

Medium screen

- 1366 pixels on laptops and desktops
- 1440 pixels on wide screen

Small screen

1920 pixels on wide screen with a full HD capability

Note: You must set the zoom percentage of the web browser to 80% for optimal viewing.

CHAPTER 7

Project setup

Create projects and project folders on the **Explore** page to organize your assets. After you have set up the runtime environment and connections that are required for a project, you can create the assets for the project.

You can't use the following characters:

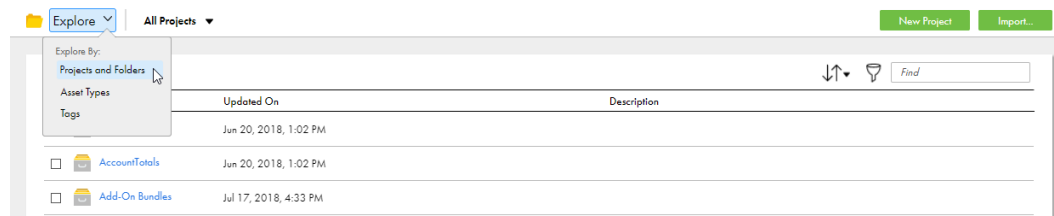
? ' | { } " ^ & [] / \

Do not use these characters in project, folder, asset, or tag names.

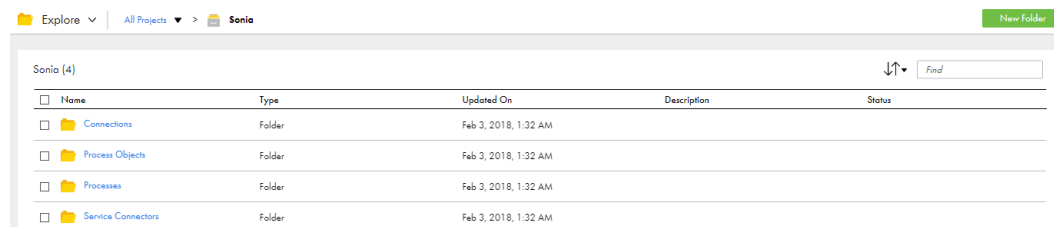
Creating Projects and Project Folders

Projects can contain multiple folders that you can use to organize the assets used in the project. Create projects using the **Explore** page.

To create a project, go to the **Explore** page and select to explore by projects, and then click **New Project**.



To create a project folder, go to the **Explore** page and open the project, and then click **New Folder**.



You can create one level of folders in a project. You cannot create folders within folders.

For more information about working with projects, see *Asset Management*.

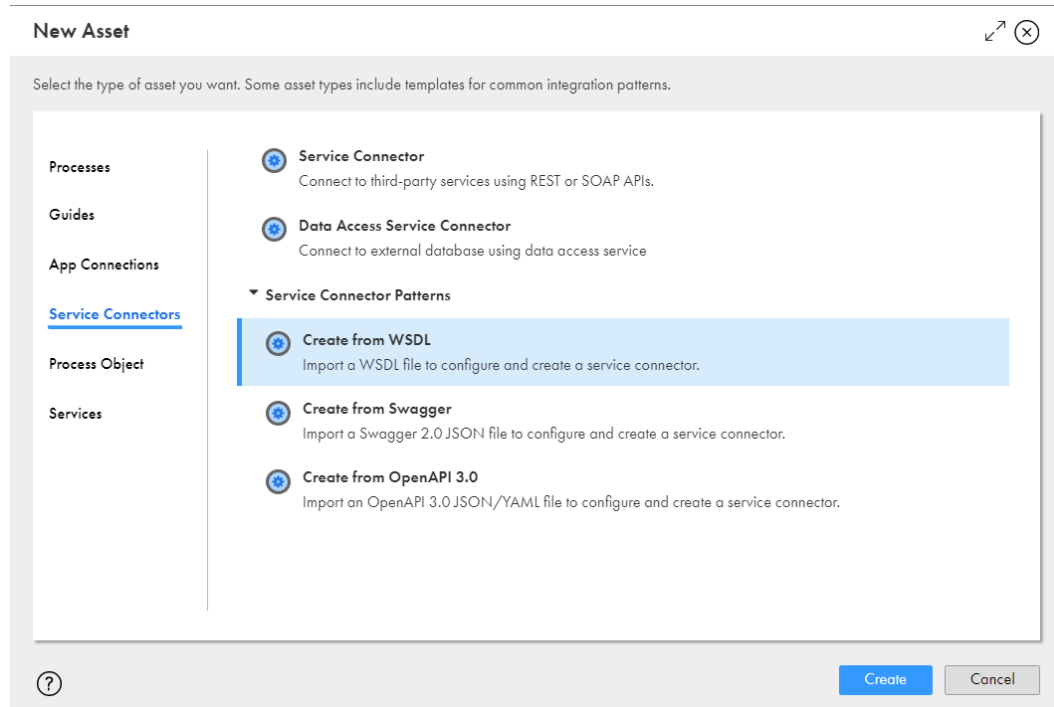
Creating Assets

Create integration assets and assign them to projects.

You can create custom assets or create assets from a template. To create a custom asset, click **New** and then select the asset type.

To create an asset from a template, click **New**, select the asset type, and then select the appropriate template.

The following image shows the dialog box that appears when you create an asset:



1. Select the type of asset that you want to create. In this image, **Service Connectors** is selected.
2. Select one of these options to create a custom asset. Since **Service Connectors** is selected on the left, this area lists the service connector types that you can create.

For more information on working with assets, see *Asset Management*.

CHAPTER 8

Editing your user profile

Your user profile contains the details of your Informatica Intelligent Cloud Services user account.

You can update the following information in your profile:

- First and last name
- Job title
- Email address
- Phone number
- Time zone (used in the job execution time stamps on the **All Jobs**, **Running Jobs**, **My Jobs**, **Import/Export Logs**, and **My Import/Export Logs** pages)
- Password
- Security question and answer

Note: If you use SAML to sign on to Informatica Intelligent Cloud Services and your organization administrator has enabled SAML group and role mapping on the **SAML Setup** page in Administrator, you can only update the time zone. The other attributes are updated directly from your enterprise directory each time you log into Informatica Intelligent Cloud Services.

1. Click the **User** icon in the top right corner of the Informatica Intelligent Cloud Services window and then select **Profile**.
2. On the **Profile** page, add or edit personal information such as your name, job title, phone number, and time zone.
3. To update your email address, click **Update Email**.

Informatica Intelligent Cloud Services sends a verification email to your new email address. The email contains a link that is valid for 24 hours. When you click the link in the email, the new address is verified, and it appears in your profile. If the link expires, you can resend the verification email.

4. Optionally, change your password or security question.
5. Click **Save**.

Display options for Application Integration user interface

You can view the Application Integration user interface in the standard mode or compact mode based on the display options that you configure in the **Settings** page of the user profile.

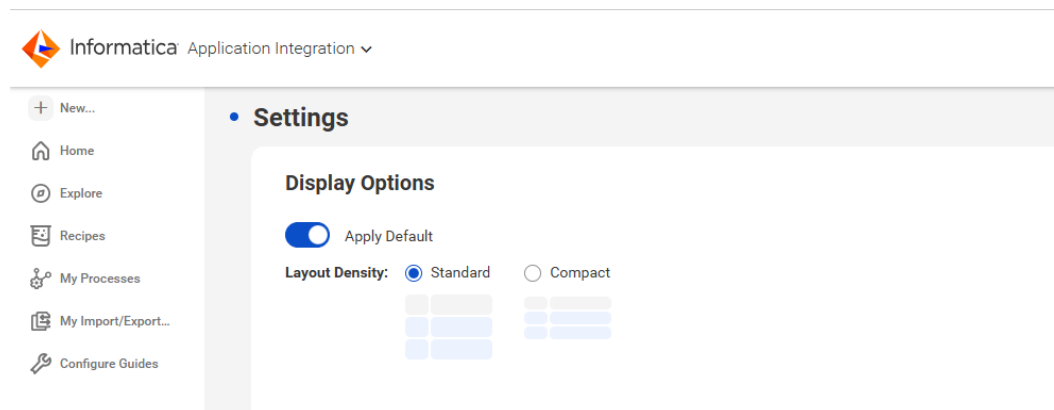
The **Settings** page includes the **Display Options** section in the modern view of the Application Integration user interface.

In the **Display Options** section, choose one of the following modes:

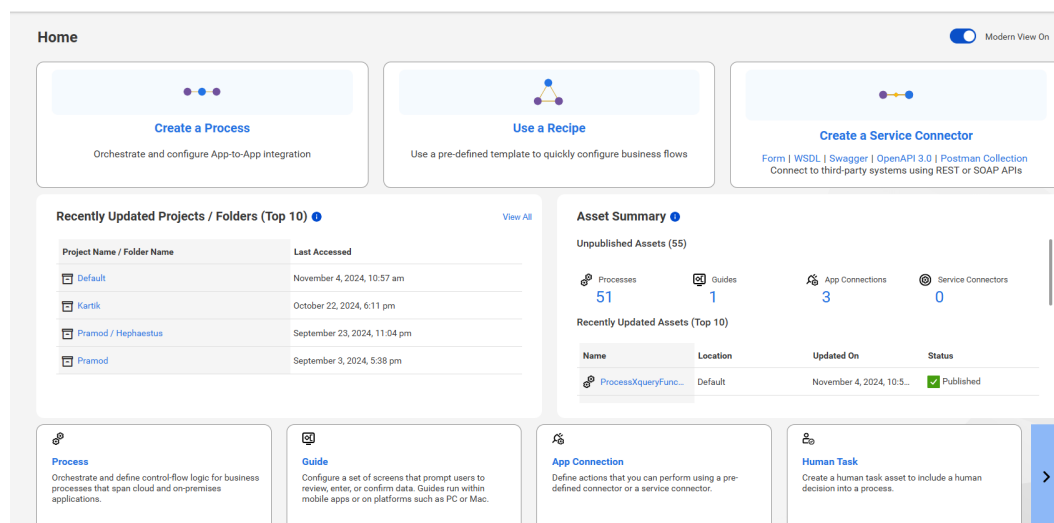
Standard. To view the Application Integration user interface with more spacing between the user interface elements and text. Default is standard mode.

Compact. To view the Application Integration user interface with an optimized screen space to display more user interface elements and text.

The following image shows the **Display Options** section of the Application Integration **Settings** page in modern view:

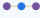


The following image shows the Application Integration **Home** page in standard mode:




The following image shows the Application Integration **Home** page in compact mode:

Home Modern View On




Create a Process

Orchestrate and configure App-to-App integration



Use a Recipe

Use a pre-defined template to quickly configure business flows



Create a Service Connector

Form | WSDL | Swagger | OpenAPI 3.0 | Postman Collection
Connect to third-party systems using REST or SOAP APIs

Recently Updated Projects / Folders (Top 10) View All

Project Name / Folder Name	Last Accessed
Default	November 4, 2024, 10:57 am
Kartik	October 22, 2024, 6:11 pm
Pramod / Hephaestus	September 23, 2024, 11:04 pm
Pramod	September 3, 2024, 5:39 pm

Asset Summary

Unpublished Assets (55)

Processes: 51

Guides: 1

App Connections: 3

Service Connectors: 0

Recently Updated Assets (Top 10)

Name	Location	Updated On	Status
ProcessKqueryfunc...	Default	November 4, 2024, 10:5...	✔ Published
ProcessXyz	Default	November 4, 2024, 10:5...	✔ Published
AppConnection1	Default	October 28, 2024, 8:11 pm	Unpublished
Process AzureServi...	Kartik	October 22, 2024, 6:11 am	Unpublished

Process

Orchestrate and define control-flow logic for business processes that span cloud and on-premises applications.

Guide

Configure a set of screens that prompt users to review, enter, or confirm data. Guides run within mobile apps or on platforms such as PC or Mac.

App Connection

Define actions that you can perform using a pre-defined connector or a service connector.

Human Task

Create a human task asset to include a human decision into a process.

CHAPTER 9

Switching to a different organization

If you are an administrator in a parent organization or a user in a parent organization that has privileges to view sub-organizations, you can switch among organizations. You do not have to log out and log back in to Informatica Intelligent Cloud Services.

Note: If you switch from a parent organization to a sub-organization, you can't perform the following operations in the sub-organization:

- Create or import data transfer tasks
- Create or import dynamic mapping tasks
- Create, validate, publish, and run taskflows
- Export and import taskflows

To switch to a different organization:

- ▶ From the **Organization** menu in the upper right corner, select the organization that you want to view.

CHAPTER 10

Informatica resources

In addition to the online help, you can find information about Informatica Intelligent Cloud Services using the following resources.

Informatica Intelligent Cloud Services web site

You can access the Informatica Intelligent Cloud Services web site at <http://www.informatica.com/cloud>. This site contains information about Informatica Cloud integration services.

Informatica Intelligent Cloud Services Communities

Use the Informatica Intelligent Cloud Services Community to discuss and resolve technical issues. You can also find technical tips, documentation updates, and answers to frequently asked questions.

Access the Informatica Intelligent Cloud Services Community at:

<https://network.informatica.com/community/informatica-network/products/cloud-integration>

Developers can learn more and share tips at the Cloud Developer community:

<https://network.informatica.com/community/informatica-network/products/cloud-integration/cloud-developers>

Informatica Intelligent Cloud Services Marketplace

Visit the Informatica Marketplace to try and buy Data Integration Connectors, templates, and mapplets:

<https://marketplace.informatica.com/>

Informatica Intelligent Cloud Services Trust Center

The Informatica Intelligent Cloud Services Trust Center provides information about Informatica security policies and real-time system availability.

You can access the trust center at <https://www.informatica.com/trust-center.html>.

Subscribe to the Informatica Intelligent Cloud Services Trust Center to receive upgrade, maintenance, and incident notifications. The [Informatica Intelligent Cloud Services Status](#) page displays the production status of all the Informatica cloud products. All maintenance updates are posted to this page, and during an outage, it will have the most current information. To ensure you are notified of updates and outages, you can subscribe to receive updates for a single component or all Informatica Intelligent Cloud Services components. Subscribing to all components is the best way to be certain you never miss an update.

To subscribe, on the [Informatica Intelligent Cloud Services Status](#) page, click **SUBSCRIBE TO UPDATES**. You can choose to receive notifications sent as emails, SMS text messages, webhooks, RSS feeds, or any combination of the four.

Informatica Global Customer Support

You can contact a Global Support Center through the Informatica Network or by telephone.

To find online support resources on the Informatica Network, click **Contact Support** in the Informatica Intelligent Cloud Services Help menu to go to the **Cloud Support** page. The **Cloud Support** page includes system status information and community discussions. Log in to Informatica Network and click **Need Help** to find additional resources and to contact Informatica Global Customer Support through email.

The telephone numbers for Informatica Global Customer Support are available from the Informatica web site at <https://www.informatica.com/services-and-training/support-services/contact-us.html>.

Informatica Knowledge Base

Use the Informatica Knowledge Base to find product resources such as how-to articles, best practices, video tutorials, and answers to frequently asked questions.

To search the Knowledge Base, visit <https://search.informatica.com>. If you have questions, comments, or ideas about the Knowledge Base, contact the Informatica Knowledge Base team at KB_Feedback@informatica.com.

Legal

This software and documentation contain proprietary information of Informatica LLC and are provided under a license agreement containing restrictions on use and disclosure and are also protected by copyright law. Reverse engineering of the software is prohibited. No part of this document may be reproduced or transmitted in any form, by any means (electronic, photocopying, recording or otherwise) without prior

consent of Informatica LLC. This Software may be protected by U.S. and/or international Patents and other Patents Pending.

Use, duplication, or disclosure of the Software by the U.S. Government is subject to the restrictions set forth in the applicable software license agreement and as provided in DFARS 227.7202-1(a) and 227.7702-3(a) (1995), DFARS 252.227-7013[®](1)(ii) (OCT 1988), FAR 12.212(a) (1995), FAR 52.227-19, or FAR 52.227-14 (ALT III), as applicable.

The information in this product or documentation is subject to change without notice. If you find any problems in this product or documentation, please report them to us in writing.

Informatica, Informatica Platform, Informatica Data Services, PowerCenter, PowerCenterRT, PowerCenter Connect, PowerCenter Data Analyzer, PowerExchange, PowerMart, Metadata Manager, Informatica Data Quality, Informatica Data Explorer, Informatica B2B Data Transformation, Informatica B2B Data Exchange Informatica On Demand, Informatica Identity Resolution, Informatica Application Information Lifecycle Management, Informatica Complex Event Processing, Ultra Messaging, Informatica Master Data Management, and Live Data Map are trademarks or registered trademarks of Informatica LLC in the United States and in jurisdictions throughout the world. All other company and product names may be trade names or trademarks of their respective owners.

Portions of this software and/or documentation are subject to copyright held by third parties, including without limitation: Copyright DataDirect Technologies. All rights reserved. Copyright © Sun Microsystems. All rights reserved. Copyright © RSA Security Inc. All Rights Reserved. Copyright © Ordinal Technology Corp. All rights reserved. Copyright © Aandacht c.v. All rights reserved. Copyright Genivia, Inc. All rights reserved. Copyright Isomorphic Software. All rights reserved. Copyright © Meta Integration Technology, Inc. All rights reserved. Copyright © Intalio. All rights reserved. Copyright © Oracle. All rights reserved. Copyright © Adobe Systems Incorporated. All rights reserved. Copyright © DataArt, Inc. All rights reserved. Copyright © ComponentSource. All rights reserved. Copyright © Microsoft Corporation. All rights reserved. Copyright © Rogue Wave Software, Inc. All rights reserved. Copyright © Teradata Corporation. All rights reserved. Copyright © Yahoo! Inc. All rights reserved. Copyright © Glyph & Cog, LLC. All rights reserved. Copyright © Thinkmap, Inc. All rights reserved. Copyright © Clearpace Software Limited. All rights reserved. Copyright © Information Builders, Inc. All rights reserved. Copyright © OSS Nokalva, Inc. All rights reserved. Copyright Edifecs, Inc. All rights reserved. Copyright Cleo Communications, Inc. All rights reserved. Copyright © International Organization for Standardization 1986. All rights reserved. Copyright © ej-technologies GmbH. All rights reserved. Copyright © Jaspersoft Corporation. All rights reserved. Copyright © International Business Machines Corporation. All rights reserved. Copyright © yWorks GmbH. All rights reserved. Copyright © Lucent Technologies. All rights reserved. Copyright © University of Toronto. All rights reserved. Copyright © Daniel Veillard. All rights reserved. Copyright © Unicode, Inc. Copyright IBM Corp. All rights reserved. Copyright © MicroQuill Software Publishing, Inc. All rights reserved. Copyright © PassMark Software Pty Ltd. All rights reserved. Copyright © LogiXML, Inc. All rights reserved. Copyright © 2003-2010 Lorenzi Davide, All rights reserved. Copyright © Red Hat, Inc. All rights reserved. Copyright © The Board of Trustees of the Leland Stanford Junior University. All rights reserved. Copyright © EMC Corporation. All rights reserved. Copyright © Flexera Software. All rights reserved. Copyright © Jinfonet Software. All rights reserved. Copyright © Apple Inc. All rights reserved. Copyright © Telerik Inc. All rights reserved. Copyright © BEA Systems. All rights reserved. Copyright © PDFlib GmbH. All rights reserved. Copyright © Orientation in Objects GmbH. All rights reserved. Copyright © Tanuki Software, Ltd. All rights reserved. Copyright © Ricebridge. All rights reserved. Copyright © Sencha, Inc. All rights reserved. Copyright © Scalable Systems, Inc. All rights reserved. Copyright © jqWidgets. All rights reserved. Copyright © Tableau Software, Inc. All rights reserved. Copyright © MaxMind, Inc. All Rights Reserved. Copyright © TMate Software s.r.o. All rights reserved. Copyright © MapR Technologies Inc. All rights reserved. Copyright © Amazon Corporate LLC. All rights reserved. Copyright © Highsoft. All rights reserved. Copyright © Python Software Foundation. All rights reserved. Copyright © BeOpen.com. All rights reserved. Copyright © CNRI. All rights reserved.

This product includes software developed by the Apache Software Foundation (<http://www.apache.org/>), and/or other software which is licensed under various versions of the Apache License (the "License"). You may obtain a copy of these Licenses at <http://www.apache.org/licenses/>. Unless required by applicable law

or agreed to in writing, software distributed under these Licenses is distributed on an "AS IS" BASIS, WITHOUT WARRANTIES OR CONDITIONS OF ANY KIND, either express or implied. See the Licenses for the specific language governing permissions and limitations under the Licenses.

This product includes software which was developed by Mozilla (<http://www.mozilla.org/>), software copyright The JBoss Group, LLC, all rights reserved; software copyright © 1999-2006 by Bruno Lowagie and Paulo Soares and other software which is licensed under various versions of the GNU Lesser General Public License Agreement, which may be found at <http://www.gnu.org/licenses/lgpl.html>. The materials are provided free of charge by Informatica, "as-is", without warranty of any kind, either express or implied, including but not limited to the implied warranties of merchantability and fitness for a particular purpose.

The product includes ACE(TM) and TAO(TM) software copyrighted by Douglas C. Schmidt and his research group at Washington University, University of California, Irvine, and Vanderbilt University, Copyright (©) 1993-2006, all rights reserved.

This product includes software developed by the OpenSSL Project for use in the OpenSSL Toolkit (copyright The OpenSSL Project. All Rights Reserved) and redistribution of this software is subject to terms available at <http://www.openssl.org> and <http://www.openssl.org/source/license.html>.

This product includes Curl software which is Copyright 1996-2013, Daniel Stenberg, <daniel@haxx.se>. All Rights Reserved. Permissions and limitations regarding this software are subject to terms available at <http://curl.haxx.se/docs/copyright.html>. Permission to use, copy, modify, and distribute this software for any purpose with or without fee is hereby granted, provided that the above copyright notice and this permission notice appear in all copies.

The product includes software copyright 2001-2005 (©) MetaStuff, Ltd. All Rights Reserved. Permissions and limitations regarding this software are subject to terms available at <http://www.dom4j.org/license.html>.

The product includes software copyright © 2004-2007, The Dojo Foundation. All Rights Reserved. Permissions and limitations regarding this software are subject to terms available at <http://dojotoolkit.org/license>.

This product includes ICU software which is copyright International Business Machines Corporation and others. All rights reserved. Permissions and limitations regarding this software are subject to terms available at <http://source.icu-project.org/repos/icu/icu/trunk/license.html>.

This product includes software copyright © 1996-2006 Per Bothner. All rights reserved. Your right to use such materials is set forth in the license which may be found at <http://www.gnu.org/software/kawa/Software-License.html>.

This product includes OSSP UUID software which is Copyright © 2002 Ralf S. Engelschall, Copyright © 2002 The OSSP Project Copyright © 2002 Cable & Wireless Deutschland. Permissions and limitations regarding this software are subject to terms available at <http://www.opensource.org/licenses/mit-license.php>.

This product includes software developed by Boost (<http://www.boost.org/>) or under the Boost software license. Permissions and limitations regarding this software are subject to terms available at http://www.boost.org/LICENSE_1_0.txt.

This product includes software copyright © 1997-2007 University of Cambridge. Permissions and limitations regarding this software are subject to terms available at <http://www.pcre.org/license.txt>.

This product includes software copyright © 2007 The Eclipse Foundation. All Rights Reserved. Permissions and limitations regarding this software are subject to terms available at <http://www.eclipse.org/org/documents/epl-v10.php> and at <http://www.eclipse.org/org/documents/edl-v10.php>.

This product includes software licensed under the terms at <http://www.tcl.tk/software/tcltk/license.html>, <http://www.bosrup.com/web/overlib/?License>, <http://www.stlport.org/doc/license.html>, <http://asm.ow2.org/license.html>, <http://www.cryptix.org/LICENSE.TXT>, <http://hsqldb.org/web/hsqLicense.html>, <http://httpunit.sourceforge.net/doc/license.html>, <http://jung.sourceforge.net/license.txt>, http://www.gzip.org/zlib/zlib_license.html, <http://www.openldap.org/software/release/license.html>, [Legal 37](http://</p></div><div data-bbox=)

www.libssh2.org, <http://slf4j.org/license.html>, <http://www.sente.ch/software/OpenSourceLicense.html>, <http://fusesource.com/downloads/license-agreements/fuse-message-broker-v-5-3- license-agreement>; <http://antlr.org/license.html>; <http://aopalliance.sourceforge.net/>; <http://www.bouncycastle.org/licence.html>; <http://www.jgraph.com/jgraphdownload.html>; <http://www.jcraft.com/jsch/LICENSE.txt>; http://jotm.objectweb.org/bsd_license.html; <http://www.w3.org/Consortium/Legal/2002/copyright-software-20021231>; <http://www.slf4j.org/license.html>; <http://nanoxml.sourceforge.net/orig/copyright.html>; <http://www.json.org/license.html>; <http://forge.ow2.org/projects/javaservice/>, <http://www.postgresql.org/about/licence.html>, <http://www.sqlite.org/copyright.html>, <http://www.tcl.tk/software/tcltk/license.html>, <http://www.jaxen.org/faq.html>, <http://www.jdom.org/docs/faq.html>, <http://www.slf4j.org/license.html>; <http://www.iodbc.org/dataspace/iodbc/wiki/iODBC/License>; <http://www.keplerproject.org/md5/license.html>; <http://www.toedter.com/en/jcalendar/license.html>; <http://www.edankert.com/bounce/index.html>; <http://www.net-snmp.org/about/license.html>; <http://www.openmdx.org/#FAQ>; http://www.php.net/license/3_01.txt; <http://srp.stanford.edu/license.txt>; <http://www.schneier.com/blowfish.html>; <http://www.jmock.org/license.html>; <http://xsom.java.net>; <http://benalman.com/about/license/>; <https://github.com/CreateJS/EaselJS/blob/master/src/easeljs/display/Bitmap.js>; <http://www.h2database.com/html/license.html#summary>; <http://jsoncpp.sourceforge.net/LICENSE>; <http://jdbc.postgresql.org/license.html>; <http://protobuf.googlecode.com/svn/trunk/src/google/protobuf/descriptor.proto>; <https://github.com/rantav/hector/blob/master/LICENSE>; <http://web.mit.edu/Kerberos/krb5-current/doc/mitK5license.html>; <http://jibx.sourceforge.net/jibx-license.html>; <https://github.com/lyokato/libgeohash/blob/master/LICENSE>; <https://github.com/hjiang/jsonxx/blob/master/LICENSE>; <https://code.google.com/p/lz4/>; <https://github.com/jedisct1/libsodium/blob/master/LICENSE>; <http://one-jar.sourceforge.net/index.php?page=documents&file=license>; <https://github.com/EsotericSoftware/kryo/blob/master/license.txt>; <http://www.scala-lang.org/license.html>; <https://github.com/tinkerpop/blueprints/blob/master/LICENSE.txt>; <http://gee.cs.oswego.edu/dl/classes/EDU/oswego/cs/dl/util/concurrent/intro.html>; <https://aws.amazon.com/asl/>; <https://github.com/twbs/bootstrap/blob/master/LICENSE>; <https://sourceforge.net/p/xmlunit/code/HEAD/tree/trunk/LICENSE.txt>; <https://github.com/documentcloud/underscore-contrib/blob/master/LICENSE>, and <https://github.com/apache/hbase/blob/master/LICENSE.txt>.

This product includes software licensed under the Academic Free License (<http://www.opensource.org/licenses/afl-3.0.php>), the Common Development and Distribution License (<http://www.opensource.org/licenses/cddl1.php>) the Common Public License (<http://www.opensource.org/licenses/cpl1.0.php>), the Sun Binary Code License Agreement Supplemental License Terms, the BSD License (<http://www.opensource.org/licenses/bsd-license.php>), the new BSD License (<http://opensource.org/licenses/BSD-3-Clause>), the MIT License (<http://www.opensource.org/licenses/mit-license.php>), the Artistic License (<http://www.opensource.org/licenses/artistic-license-1.0>) and the Initial Developer's Public License Version 1.0 (<http://www.firebirdsql.org/en/initial-developer-s-public-license-version-1-0/>).

This product includes software copyright © 2003-2006 Joe Walnes, 2006-2007 XStream Committers. All rights reserved. Permissions and limitations regarding this software are subject to terms available at <http://xstream.codehaus.org/license.html>. This product includes software developed by the Indiana University Extreme! Lab. For further information please visit <http://www.extreme.indiana.edu/>.

This product includes software Copyright (c) 2013 Frank Balluffi and Markus Moeller. All rights reserved. Permissions and limitations regarding this software are subject to terms of the MIT license.

See patents at <https://www.informatica.com/legal/patents.html>.

DISCLAIMER: Informatica LLC provides this documentation "as is" without warranty of any kind, either express or implied, including, but not limited to, the implied warranties of noninfringement, merchantability, or use for a particular purpose. Informatica LLC does not warrant that this software or documentation is error free. The information provided in this software or documentation may include technical inaccuracies or typographical errors. The information in this software and documentation is subject to change at any time without notice.

NOTICES

This Informatica product (the "Software") includes certain drivers (the "DataDirect Drivers") from DataDirect Technologies, an operating company of Progress Software Corporation ("DataDirect") which are subject to the following terms and conditions:

1. THE DATADIRECT DRIVERS ARE PROVIDED "AS IS" WITHOUT WARRANTY OF ANY KIND, EITHER EXPRESSED OR IMPLIED, INCLUDING BUT NOT LIMITED TO, THE IMPLIED WARRANTIES OF MERCHANTABILITY, FITNESS FOR A PARTICULAR PURPOSE AND NON-INFRINGEMENT.
2. IN NO EVENT WILL DATADIRECT OR ITS THIRD PARTY SUPPLIERS BE LIABLE TO THE END-USER CUSTOMER FOR ANY DIRECT, INDIRECT, INCIDENTAL, SPECIAL, CONSEQUENTIAL OR OTHER DAMAGES ARISING OUT OF THE USE OF THE ODBC DRIVERS, WHETHER OR NOT INFORMED OF THE POSSIBILITIES OF DAMAGES IN ADVANCE. THESE LIMITATIONS APPLY TO ALL CAUSES OF ACTION, INCLUDING, WITHOUT LIMITATION, BREACH OF CONTRACT, BREACH OF WARRANTY, NEGLIGENCE, STRICT LIABILITY, MISREPRESENTATION AND OTHER TORTS.

INDEX

A

- allowlist
 - Secure Agent domains [15, 19](#)
 - Secure Agent IP addresses [15, 19](#)
- Application Integration
 - description [7](#)
- assets
 - creating [29](#)

C

- Cloud Application Integration community
 - URL [34](#)
- Cloud Developer community
 - URL [34](#)
- creating
 - assets [29](#)
 - folders [28](#)
 - projects [28](#)

D

- Data Integration community
 - URL [34](#)
- directories
 - configuring Secure Agent login to access [18](#)

E

- email addresses
 - for notification [30](#)

F

- firewall
 - configuration [15, 19](#)
- folders
 - creating [28](#)

I

- Informatica Global Customer Support
 - contact information [35](#)
- Informatica Intelligent Cloud Services
 - web site [34](#)
- Internet Explorer 11
 - requirements [9](#)

L

- Linux
 - configuring proxy settings [21](#)

M

- maintenance outages [35](#)

O

- organizations
 - switching to another organization [33](#)

P

- passwords
 - changing [30](#)
- POD
 - how to identify [15, 19](#)
- Product Availability Matrix [9](#)
- profiles
 - editing [30](#)
- projects
 - creating [28](#)
 - creating folders [28](#)
- proxy settings
 - configuring on Linux [21](#)
 - configuring on Windows [17](#)

R

- requirements
 - Internet Explorer 11 [9](#)
 - Product Availability Matrix [9](#)
 - Secure Agent [14, 19](#)

S

- Secure Agent Manager
 - launching [14](#)
- Secure Agents
 - communication port [15, 19](#)
 - configuring a Windows service login [18](#)
 - domains allowlist [15, 19](#)
 - installing on Linux [20](#)
 - installing on Windows [15](#)
 - IP address allowlist [15, 19](#)
 - permissions on Linux [20](#)
 - permissions on Windows [15](#)
 - registering on Linux [20](#)

Secure Agents (*continued*)

 registering on Windows [15](#)

 requirements on Linux [19](#)

 requirements on Windows [14](#)

 starting on Windows [14](#)

security questions

 editing [30](#)

status

 Informatica Intelligent Cloud Services [35](#)

sub-organizations

 switching to another organization [33](#)

system requirements [9](#)

system status [35](#)

T

time zones

 changing user profile [30](#)

trust site

 description [35](#)

U

upgrade notifications [35](#)

user profiles

 editing [30](#)

W

web site [34](#)

Windows

 configuring proxy settings [17](#)

Windows service

 configuring Secure Agent login [18](#)