



Informatica® MDM - Product 360
10.1 HotFix 1

Release Notes

Informatica MDM - Product 360 Release Notes
10.1 HotFix 1
April 2021

© Copyright Informatica LLC 1993, 2021

This software and documentation are provided only under a separate license agreement containing restrictions on use and disclosure. No part of this document may be reproduced or transmitted in any form, by any means (electronic, photocopying, recording or otherwise) without prior consent of Informatica LLC.

U.S. GOVERNMENT RIGHTS Programs, software, databases, and related documentation and technical data delivered to U.S. Government customers are "commercial computer software" or "commercial technical data" pursuant to the applicable Federal Acquisition Regulation and agency-specific supplemental regulations. As such, the use, duplication, disclosure, modification, and adaptation is subject to the restrictions and license terms set forth in the applicable Government contract, and, to the extent applicable by the terms of the Government contract, the additional rights set forth in FAR 52.227-19, Commercial Computer Software License.

Informatica and the Informatica logo are trademarks or registered trademarks of Informatica LLC in the United States and many jurisdictions throughout the world. A current list of Informatica trademarks is available on the web at <https://www.informatica.com/trademarks.html>. Other company and product names may be trade names or trademarks of their respective owners.

The information in this documentation is subject to change without notice. If you find any problems in this documentation, report them to us at infa_documentation@informatica.com.

Informatica products are warranted according to the terms and conditions of the agreements under which they are provided. INFORMATICA PROVIDES THE INFORMATION IN THIS DOCUMENT "AS IS" WITHOUT WARRANTY OF ANY KIND, EXPRESS OR IMPLIED, INCLUDING WITHOUT ANY WARRANTIES OF MERCHANTABILITY, FITNESS FOR A PARTICULAR PURPOSE AND ANY WARRANTY OR CONDITION OF NON-INFRINGEMENT.

Publication Date: 2021-04-12

Table of Contents

Preface.	4
Informatica Resources.	4
Informatica Network.	4
Informatica Knowledge Base.	4
Informatica Documentation.	4
Informatica Product Availability Matrices.	4
Informatica Velocity.	5
Informatica Marketplace.	5
Informatica Global Customer Support.	5
Chapter 1: Binaries Download.	6
Software.	6
Chapter 2: New Features.	7
Operation.	7
SOAP service endpoints removed	7
Product 360 Supplier Portal upgrade to Apache Tomcat 8.5.	7
Audit Trail Migration.	8
Legacy audit trail database migration preparation.	8
Configuration.	8
Product 360 Core.	11
Server.	11
Priority job server.	12
Improved execution time and cache synchronization in multi-server setups	12
Security.	12
Prevent automated login attempts.	12
HTTP response header.	13
Deletion.	13
Delete operation executed on the server.	13
Import.	14
Subentity deletion on import now supports error mode 'Tolerant'.	14
Improved capabilities for fixing purposes of import mappings.	14
Repository Manager.	14
Validations.	14
Accelerator.	15
GDSN update to version 3.1.15.	15
Chapter 3: Fixed Limitations.	16
Product 360 Main Fixed Limitations.	16
Media Manager Fixed Limitations.	20

Preface

Refer to the *Informatica® MDM - Product 360 Release Notes* to learn about new features and enhancements, behavior changes between versions, and support changes in this version.

Informatica Resources

Informatica provides you with a range of product resources through the Informatica Network and other online portals. Use the resources to get the most from your Informatica products and solutions and to learn from other Informatica users and subject matter experts.

Informatica Network

The Informatica Network is the gateway to many resources, including the Informatica Knowledge Base and Informatica Global Customer Support. To enter the Informatica Network, visit <https://network.informatica.com>.

As an Informatica Network member, you have the following options:

- Search the Knowledge Base for product resources.
- View product availability information.
- Create and review your support cases.
- Find your local Informatica User Group Network and collaborate with your peers.

Informatica Knowledge Base

Use the Informatica Knowledge Base to find product resources such as how-to articles, best practices, video tutorials, and answers to frequently asked questions.

To search the Knowledge Base, visit <https://search.informatica.com>. If you have questions, comments, or ideas about the Knowledge Base, contact the Informatica Knowledge Base team at KB_Feedback@informatica.com.

Informatica Documentation

Use the Informatica Documentation Portal to explore an extensive library of documentation for current and recent product releases. To explore the Documentation Portal, visit <https://docs.informatica.com>.

If you have questions, comments, or ideas about the product documentation, contact the Informatica Documentation team at infa_documentation@informatica.com.

Informatica Product Availability Matrices

Product Availability Matrices (PAMs) indicate the versions of the operating systems, databases, and types of data sources and targets that a product release supports. You can browse the Informatica PAMs at <https://network.informatica.com/community/informatica-network/product-availability-matrices>.

Informatica Velocity

Informatica Velocity is a collection of tips and best practices developed by Informatica Professional Services and based on real-world experiences from hundreds of data management projects. Informatica Velocity represents the collective knowledge of Informatica consultants who work with organizations around the world to plan, develop, deploy, and maintain successful data management solutions.

You can find Informatica Velocity resources at <http://velocity.informatica.com>. If you have questions, comments, or ideas about Informatica Velocity, contact Informatica Professional Services at ips@informatica.com.

Informatica Marketplace

The Informatica Marketplace is a forum where you can find solutions that extend and enhance your Informatica implementations. Leverage any of the hundreds of solutions from Informatica developers and partners on the Marketplace to improve your productivity and speed up time to implementation on your projects. You can find the Informatica Marketplace at <https://marketplace.informatica.com>.

Informatica Global Customer Support

You can contact a Global Support Center by telephone or through the Informatica Network.

To find your local Informatica Global Customer Support telephone number, visit the Informatica website at the following link:

<https://www.informatica.com/services-and-training/customer-success-services/contact-us.html>.

To find online support resources on the Informatica Network, visit <https://network.informatica.com> and select the eSupport option.

CHAPTER 1

Binaries Download

This chapter includes the following topic:

- [Software, 6](#)

Software

The installation packages of Product 360 10.1 HotFix 1 will be available within the Informatica shipping portal.

Partners can request software through the partner portal.

If you have not yet signed up, do it here: <https://partners.informatica.com/>

Packages for the development of extensions for the current software version - Software Development Kit:

Content	Download Link	Remark
Product 360 SDK target	PIM_10.1.0.01.00_SDK_target.zip	This package contains the target platform for the development of Product 360 extensions.
Product 360 SDK complete	PIM_10.1.0.01.00_SDK_complete.zip	This package contains the target platform for the development of Product 360 extensions plus samples.
Java REST client	PIM_10.1.0.01.00_SDK_RESTclient.zip	This package contains the java client implementation encapsulating the REST based Services API.

CHAPTER 2

New Features

This chapter includes the following topics:

- [Operation, 7](#)
- [Audit Trail Migration, 8](#)
- [Product 360 Core, 11](#)
- [Security, 12](#)
- [Deletion, 13](#)
- [Import, 14](#)
- [Repository Manager, 14](#)
- [Accelerator, 15](#)

Operation

SOAP service endpoints removed

To remove a legacy technology from the Product 360 server stack most the of provided SOAP endpoints have been removed with this version. No standard functionalities have been removed as the eliminated endpoints were not used by Product 360.

The only endpoints still available are:

- `http://<Product360 server>:<Port number>/services/MediaAsset/isMediaAssetInUse?mediaAssetId/services/MediaAsset/isMediaAssetInUse?mediaAssetId`
- `http://<Product360 server>:<Port number>/services/MediaAsset/isDerivationDefinitionInUse?derivationDefinitionId`

These endpoints and the underlying SOAP services framework Axis2 will be removed in future releases.

It is recommended to use the Product 360 Service API instead.

Product 360 Supplier Portal upgrade to Apache Tomcat 8.5

Since this version Product 360 Supplier Portal is being shipped with Tomcat 8.5. With this upgrade the version of Apache Tomcat have been streamlined in all Product 360 modules.

Audit Trail Migration

Legacy audit trail database migration preparation

We have provided MSSQL and Oracle database scripts for the legacy audit trail database/schema to speed up the migration by removing unnecessary indexes and creating new optimized indexes. Scripts are available in the configuration folder of the audit trail migration: `\server\configuration\HPM\audittrail\migration\dbPreparationScripts`

The corresponding script has to be executed on the legacy audit trail database/schema before migration can be started. Please note that this can take a few hours, depending on the database size.

Configuration

Repository

Please ensure the repository has all needed Audit Trail configurations in place. This is important because only data for Audit Trail enabled root entities will be migrated, all other data will be skipped.

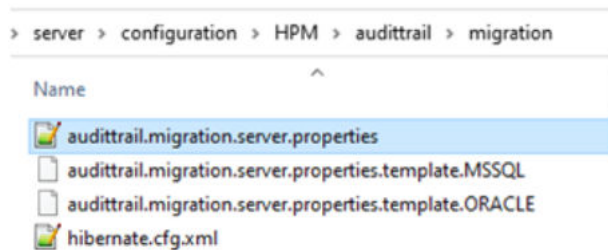
Note: The entities in the 10.1 repository enabled for Audit Trail do not exactly match those in previous versions. Please check all settings and adapt them to your needs.

In addition to the root entity Audit Trail settings, the "Supports Audit Trail" setting for repository fields will also be checked. Only Audit Trail enabled fields and logical keys will be migrated.

audittrail.migration.server.properties

The access to the legacy Audit Trail database should be configured in `<PIM_SERVER_INSTALLATION_ROOT>\configuration\HPM\audittrail\migration\audittrail.migration.server.properties` file.

This file can be created from a corresponding template file. The essential settings here are the host and schema configuration. You can take the settings from the old configuration for Audit Trail.



```
audittrail.migration.server.properties
### General Host
dest.host = host

### Default database settings
db.default.type = MSSQL

...

### AuditTrail database/schema
db.audittrail.schema = HPM_AUDITTRAIL
db.audittrail.schema.backup = ${db.audittrail.schema}_BAK
db.audittrail.server = ${dest.host}
db.audittrail.port = 1433
```



```
db.audittrail.user           = user
db.audittrail.password      = password
```

plugin_customization.ini

In order to use the migration you have to configure the time period for which you want to migrate changes, in the <PIM_SERVER_INSTALLATION_ROOT>\configuration\HPM\plugin_customization.ini

plugin_customization.ini

```
# -----
# Audit Trail migration preferences
# -----
#
# Audit trail migration starts from today or from the specified 'migrationFromDate' and
# runs back
# to the specified 'migrationToDate' into the past.
#
#
#      'migrationToDate'           'migrationFromDate'   now
#      e.g. 2020-01-01           e.g. 2021-04-02
#      |                         |                       |
# -----+-----+-----+-----+-----+-----+-----+-----
# > time
#
# Initial start date of the migration means that all old audit trail entries between
# 'migrationToDate' and
# this 'migrationFromDate' will be transformed to the new audit trail format and stored
# in elastic.
# This value is optional.
# Date is included.
# Format: yyyy-MM-dd
# com.heiler.ppm.audittrail.migration.server/migrationFromDate =

# All old audit trail entries between today or a defined 'migrationFromDate' and this
# specified 'migrationToDate' will be transformed
# to the new audit trail format and stored in elastic.
# This value is mandatory.
# Date is included.
# Format: yyyy-MM-dd
# com.heiler.ppm.audittrail.migration.server/migrationToDate =

# Locale to be used for the Audit Trail migration job.
# This should be the same value as it was for the "audittrail.atcsbuilder.locale"
# property
# in the audittrail.properties file of older versions.
# Default is en_US.
# com.heiler.ppm.audittrail.migration.server/locale=en_US

# Fetchsize of retrieving migration data from the legacy Audit Trail database.
# This value should be between 1 and the maximum database-specific possible fetchsize
# defined in property 'db.default.rowPrefetchSize' (10000).
# In case of some memory issues during the migration, this value should be decreased.
# com.heiler.ppm.audittrail.migration.server/migration.fetch.size = 10000

# Number of threads for retrieving migration data from the legacy Audit Trail database.
# Usually all CPU threads are used for the migration. In case of working with PIM and
# migrate from the legacy
# Audit Trail database it is worth to decreased the number of maximum thread to work
# fluid with PIM.
# This value is optional.
# Minimum value is 1, maximum value is number of CPU cores.
migration.maxThreads =
```

The 'migrationToDate' is the end date of the migration. All changes between the given 'migrationToDate' and the given 'migrationFromDate' (or today if 'migrationFromDate' is not set) are migrated to Elasticsearch. The

'migrationToDate' value is mandatory. The 'migrationFromDate' is optional. When the 'migrationFromDate' is not set, then today will be use as 'migrationFromDate'.

The locale is needed to resolve labels of the objects to be migrated. When the data was written, the locale configured for the attribute `audittrail.atcsbuilder.locale` in the `audittrail.properties` file was used. The same value should be used for the data migration.

Audit Trail migration uses all CPU cores by default. If the PIM server should run in parallel to the Audit Trail migration, the number of used CPU cores for the Audit Trail migration should be decreased. This can be done by set the property `migration.maxThreads` to a value between 1 and the number of CPU cores.

Rights

There is a new action right the user must have in order to execute the migration:

"Audit Trail, migration" - "Permission to start audit trail migration job"

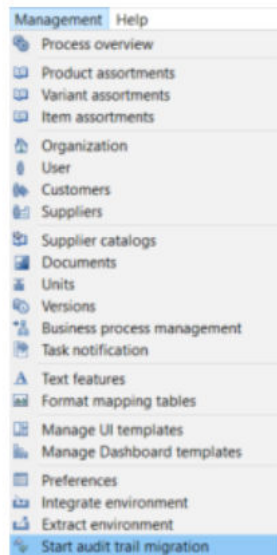
Other rights are not considered in the migration process.

Start migration

In order to start the migration, start the Desktop Client and open the Management menu. You will find a new entry at the bottom "Start audit trail migration".

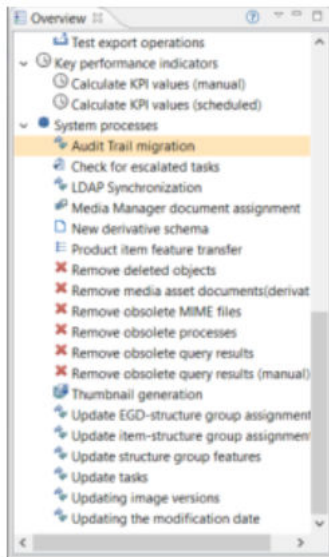
If the entry is missing, the user probably does not have the action right.

Only one migration job can run at a time, so if the menu entry is disabled, a job instance might already be running.



You can find the executed server job in the process overview perspective under System processes.

The problem log of the job will show the progress as well as errors.



The number of migrated changes is logged for every processed day. This includes also the number of errors or skipped changes. A change will be skipped if it could not be migrated, details will also be logged, or if its entity is not configured to support audit trail.

After migration

After the migration you can revoke the migration right from your users.

The customer won't need to start the audit trail server anymore. This also means the old audit trail database is not used anymore. If you didn't migrate all data and you are not sure if you might need the data again sometime, think about storing a backup from the database.

FAQ and troubleshooting

See the FAQ and Troubleshooting sections of the Audit Trail Migration in the Migration Guide.

Product 360 Core

Server

Check for short identifiers

With the redesign of the Audit trail we introduced "short identifiers". By now, these are not only used by the Audit trail component, but also by the Object API and the triggers. Therefore we ensure on server start that all entities, fields and logical keys have valid short identifiers.

For more information about short identifiers, see Installation and Operation → Customizing → Server and Platform → Domain Model (Repository)

Note: From now on, your server won't start if short identifiers are missing.

Priority job server

Some jobs are more important than others, or, some jobs should be executed on a dedicated server. To be able to support those use cases we introduced the new priority job server feature. A new role for servers has been introduced: `PRIORITY_JOB_SERVER`. This role can be added to the `NetworkConfiguration.xml` file. Additionally, a new preference has been added:

```
plugin_customization.ini

# Comma separated list of job type identifiers which should be executed on the priority
job server in case one is available
com.heiler.ppm.job.server/prioritizedJobs =
```

Only job types that are declared as "priority jobs" using this preference will be routed to the priority job servers, as long as the current network has at least one priority job server.

If there is no priority server currently running, the job will be executed like any other job.

For more information about the list of available job types, see the Server Job Types section in the Configuration Manual.

Please note that this priority logic is only available with the out-of-the-box resource-based (default) or round-robin distribution logic. If there are multiple priority servers, the jobs will be distributed among those.

A server node can be `PRIORITY_JOB_SERVER` as well as `JOB_SERVER` in which case priority jobs will only be forwarded to this server, but normal jobs will be assigned to this server as well, based on the distribution algorithm.

Improved execution time and cache synchronization in multi-server setups

With the introduction of improvements in the server notification time, we are happy to announce the removal of the delivery delay for message queue messages. With that, we have also removed the property `queue.default.delivery.delay` in `server.properties` introduced with the release of Product 360 10.0, which results in a much faster execution experience of single message queue calls in multi-server deployments.

Note: In case the property has been modified in your deployment, we strongly recommend removing it to benefit from the new performance.

Security

Prevent automated login attempts

Starting with this release we have added protection against brute force login attacks which aim to gain access to user accounts by repeatedly trying to guess the username and password. A user account will be locked out for a set period of time after a number of failed login attempts. In this way, Product 360 is able to prevent automated attacks. All failed attempts of the same user on each server are counted individually, no matter from where the request is coming, e.g. from Desktop UI, Web UI or via a REST call. The count of failed attempts is automatically reset once the lock period is reached, or a login has been successful before the

number of maximumFailedAttempts has been reached. The corresponding maximum allowed attempts count and lock period are configurable within the following settings in the `plugin_customization.ini`.

plugin_customization.ini

```
# Specifies the maximum number of failed login attempts with wrong password. If this
# number is reached, then the user account will be temporarily locked.
# Default value is 10.
com.heiler.ppm.security.server/security.preventLoginAttempts.maximumFailedAttempts
= 10

# Specifies how long the user account will be temporarily locked if the maximum login
# attempts is reached.
# Default value is 1800 seconds(= 30 minutes).
com.heiler.ppm.security.server/security.preventLoginAttempts.lockPeriodInSecond
= 1800
```

HTTP response header

It is possible to apply arbitrary numbers of HTTP response headers to the HTTP responses for all resources below context `/pim`.

Use the prefix `web.client.headers.response.` to define a response header.

webfrontend.properties

```
# It is possible add http response headers to each http response send to the client.
# This applies for all http resources below /pim context.
# Use prefix 'web.client.headers.response.' to add arbitrary number of http response
# header.
# The following sample adds the header 'Strict-Transport-Security' with value 'max-
# age=31536000; includeSubDomains' to each response.
# web.client.headers.response.Strict-Transport-Security = max-age=31536000;
# includeSubDomains
```

Deletion

Delete operation executed on the server

The current delete operation entails a user to wait until deletion gets completed. For a large number of objects, this can result in users waiting for a long period of time. Starting with this release, (*based on a certain threshold of deleted objects*), we are pushing the deletion operation to a server job, thereby allowing the deletion to execute asynchronously and without keeping the user waiting until completion. Once deletion has been scheduled as a job, this allows the user to either navigate to a different page or close the UI altogether to come back later.

They can check the related summary information for delete jobs from Process Overview (*under data maintenance*) in Product 360 Desktop later and this information is retained for seven days.

The current default threshold for delete jobs has been set as 100 which is configurable within the following setting in the `plugin_customization.ini`.

plugin_customization.ini

```
#Override the default preference for the deletion job threshold
#If number of objects to be deleted are greater or equal than this threshold number then
#a server job would be scheduled for deletion
```

```
# -----  
com.heiler.ppm.delete.core/entity.deletion.threshold=100
```

It is also possible to set the delete job threshold parameter at an entity level by creating an Entity Param (*entity.delete.jobThreshold*) in the repository and specifying a non-zero value.

The current thresholds for Supplier Catalog and Structure Group have been set to 1 and 10 respectively.

Import

Subentity deletion on import now supports error mode 'Tolerant'

It is now possible to use the existing "subentity deletion on import" feature which makes it possible to replace existing data in the system with the content of an import file, in combination with the error mode 'Tolerant'.

In the past, only the 'Restrictive' mode was supported, which rejected the row on detection of any error in the data. Tolerant enables to import as much as possible data, even if some data cannot be imported due to invalid values.

It is required to enable the 'Tolerant' mode for subentity deletion in the server's `plugin_customization.ini`. By default, only the error mode 'Restrictive' is still enabled.

```
plugin_customization.ini  
  
# Allows using error mode 'Tolerant' in case an import mapping has a sub entity deletion  
configuration defined.  
# Not enabling the error mode 'Tolerant' prevents possible unintentional deletion of  
data.  
# The error mode 'Tolerant', if enabled here, will delete sub entities if there is no  
properly qualified import data for a respective sub entity which is marked for deletion.  
# Boolean value, default is false  
com.heiler.ppm.importer5.core/importer.subEntityDeletion.allowTolerantMode = false
```

Improved capabilities for fixing purposes of import mappings

Multiple purposes for import mappings are not possible as per design. However, due to some issues in the past, it might have happened that import mappings contained multiple different or the same purposes in the database. This should not be the case any longer.

For detailed documentation, please refer to the section 'Multiple Purposes for Import Mappings in the GenericData Table' in the P360 Core Database Migration article in the Database Migration guide.

Repository Manager

Validations

As you know, there is the possibility to validate your repository either by using the menu entry 'Repository Editor' → 'Validate' or by using the 'Validate' entry in the context menu.

This will trigger all the repository validations that are executed during the server start. Especially the validations regarding the short identifier will be triggered here.

Note: You need to select the 'Repository' node or a node above that to have the validations executed.

Accelerator

GDSN update to version 3.1.15

We updated our GDSN Accelerator to the current GDSN version 3.1.15. For exact dates when test and production pools are switched to this version, please see the roadmaps on either www.1worldsync.com or www.atrify.com. There are several new fields, updated valid values lists, DQ rule configurations, and of course changes in the export templates. For an overview of all the changes, see GDSN Migration Guide for version 3.1.15 in the Accelerator documentation.

Please be aware that fields added additionally as part of the customer's project need to be evaluated on any impact and potentially modified as well.

Note: Some fields are planned for deprecation. Please think about moving them according to the GDSN documentation.

- ArticleHealthCare.HealthClaimCode
- ArticleHealthCareLang.HealthClaimDescription

CHAPTER 3

Fixed Limitations

This chapter includes the following topics:

- [Product 360 Main Fixed Limitations, 16](#)
- [Media Manager Fixed Limitations, 20](#)

Product 360 Main Fixed Limitations

This release delivers a number of bug fixes that have been documented in the Fixed Limitations section below. If you encounter difficulties or have further questions regarding one of these limitations, contact Informatica Global Customer Support and reference the CR number.

Reference Number	Description
HPM-55146	Too many skipped record in AuditTrail Migration
HPM-55136	Audit trail migration canceled with error "Stopwatch is not running"
HPM-55033	AuditTrailMigration with Oracle database does not migrate any EntityChanges
HPM-54931	Internal error when creating a task after search in WEB
HPM-54905	Entity changes are not correctly handled
HPM-54898	Not able to create a version for an item
HPM-54866	High memory consumption of overloaded execution pool
HPM-54864	Using P360 RestClient-Library with an external tool might cause errors
HPM-54861	Workflow will stop if export post-processing has <exportdir>
HPM-54838	Items get change date in master catalog even though it didn't change regarding its data
HPM-54826	Unit name and symbols missing while doing a database upgrade for a custom Unit System
HPM-54820	AuditTrailMigration: initial start date is missing
HPM-54819	AudiTrail migration stops with exceptions during writing to elastic index

Reference Number	Description
HPM-54815	AT migration (Elasticsearch) : java.net.SocketTimeoutException: 30,000 milliseconds timeout on connection
HPM-54814	AudiTrail migration stops due to corrupt changeSummary
HPM-54801	Workflow will stop working if you use a special Character in a updated field
HPM-54769	Entity Change on a Characteristic value prevents server start
HPM-54754	Comment not in case there are two task with the same label and different status and identifier
HPM-54748	Make the B2B call working also if some GTINs are not existing
HPM-54724	Merger throwing error in 10.1 for a DQ trigger
HPM-54680	com.heiler.ppm.export.core/export_errorlevel_nofieldpermission doesn't work as described
HPM-54678	SDK Help plugin invalid
HPM-54675	Get exception when use case sensitive search by REST API
HPM-54641	Change on Publication Status will not trigger last change on item
HPM-54599	User and user group values not getting in the payload once we accept the items in task
HPM-54598	Server doesn't start up with BPM/DQ trigger config due to startup order issues
HPM-54570	Web UI error message when updating Range Type on Attribute
HPM-54553	AudiTrail migration Stops after several transformation exceptions
HPM-54517	Export is not controlled by all relevant fields defined in export channel
HPM-54508	UI elements of tasks disappear if web client is opened in two browser tab
HPM-54488	ConcurrentModificationException when you export a lot of items with parallel process and filters in the submodules
HPM-54476	Error message displaying History
HPM-54471	Chinese Characters are not properly displayed in the Web UI Labels
HPM-54468	Defined label of a field is changing after PIM Desktop client restart or with saving the "Layout".
HPM-54465	Acquired entity manager is not getting released and increase temp DB
HPM-54460	During the Merge some Data is lost
HPM-54457	Long time is needed to open field list from DQ perspective to configure a rule
HPM-54422	Units are not visible if they belong to multiple Unit Category in case of custom unit category
HPM-54406	Within DQ Perspective Logical Keys displayed in Field selection for some GDSN fields

Reference Number	Description
HPM-54401	Missing translation on P360° view in web client
HPM-54376	High memory consumption during AuditTrailMigration
HPM-54342	Unnecessary modification of items during Structure reassigning
HPM-54335	Creation of a nutrient for an item is not possible after update to EBF2 for Version 10 HF2
HPM-54334	Invalid values are displayed till refreshed
HPM-54331	Search/filtering doesn't work for file names in Web UI with HMM provider
HPM-54329	Item/Product/Variants references "create" action right does not work as expected.
HPM-54323	In case when a lookup has a numerical name and if another lookup has the same code value, in the drop down it appears as Lookup_Name(Lookup code).
HPM-54320	Missing Translation in WEB Assortments for Dutch
HPM-54303	"Create reference" action is not displayed for products and variants.
HPM-54302	BPM Trigger REST based not working anymore
HPM-54296	The invalid long text reappears in the text box
HPM-54200	Error in item search in last changed on field (FuncorException: ArticleLog.ModificationDate)
HPM-54187	Merge Job Fails throwing SQL Exception in the Server Log, but marked 'Completed' in Job Overview
HPM-54168	Parent Item in master catalog's Last Changed on (PIM) timestamp should get updated when reference item is merged to Master Catalog
HPM-54114	Changing a structure group assignment in mapped Structure when using the "StructureGroup Identifier" and having a "hierarchical number" maintained end up in a change in "last Modified on (PIM)"
HPM-54112	Display of tables and forms in detail tab - downscaling of tables different to form fields
HPM-54087	Unexpected internal error while running the merge job
HPM-54077	getFieldValue with qualifier in Characteristic Validation expression
HPM-54053	datetime fields of ArticleSubDomainType entity are misconfigured in repository with respect to hibernate queries
HPM-54025	Client stability issues continued - client freezes after switching to an Item perspective with grouping
HPM-53949	Characteristic icon cannot be disabled in the web ui
HPM-53948	Web search does not work under the administrator user
HPM-53946	DB exception while trying to save an import mapping

Reference Number	Description
HPM-53922	Web clients add tag to richt text field when editing
HPM-53870	Import removing line breaks for rich text fields
HPM-53801	The data type filter "Purpose" for the data type "Feature" does not work correctly in parallel processing
HPM-53721	Merge jobs is not throwing any error message when items are not found
HPM-53658	Task is not visible after switching from one view to other in Web UI
HPM-53602	Desktop Client not showing Version, but placeholders, for languages other than english/german
HPM-53507	DB deadlock error
HPM-53370	The error in Elastic Search Export is not shown as an error and instead is shown as an info
HPM-53206	Item filter executes after an item is classified in the web client
HPM-53205	Maintain attribute values independent of their preset values having an issue in WebUI
HPM-52974	It is possible to edit prices in the past without action right "Edit prices (in the past)"
HPM-52828	re-open - Error configuring a preview on a structure group
HPM-52788	Attribute permission behavior
HPM-52730	Food AndBeverageBinder throws FieldFormDefinition warnings at server start if GDSN completely deactivated
HPM-52720	When entering Characteristics in the WebClient scrolls page up
HPM-52594	Prices visible in Web Client despite removed action rights
HPM-52490	Error message when exporting from Web UI
HPM-52265	Report Merge causing dead locks at DB
HPM-52254	The lookup values with same name and different code behaves differently for even number and odd number entry
HPM-52216	Field looks editable on Custom Tab even if its not
HPM-51874	Field on Characteristic can't be edited even if all requiered rights/permissions are set in web client
HPM-51656	Warning symbol appearing near attribute value in PIM Web
HPM-51315	Title of detail tab section does not escape the rule name properly
HPM-51098	Custom field for Custom Lookup Value Lang Sub-Entity
HPM-51037	Unable to remove & edit multi-selection field items in export preview

Reference Number	Description
HPM-50186	"Number of products" field in the "Product attributes (cumulative)" remains empty
HPM-49555	Configuring task description field as mandatory ends up in an error on Rich Client
HPM-48297	Sub task of the task group are not able to search
HPM-48222	Double unit codes
HPM-48122	REOPEN: HPM-45320 - Structure group is not transferred to the articles in structure group mapping
HPM-48037	Display error in "Data quality scheduling" view
HPM-46534	Scrollbar jumps involuntarily in the Web-Client within the structure tree.
HPM-45948	Editing the actionpanel default size
HPM-45871	DQ Fails with SQL Error because of error in stored procedure S_RepArt_BySGNodes
HPM-45421	Number of Tasks for a user/group is 0 when go inside a task and come out of it
HPM-44967	Task created from search query, contains too many items after "Find and Replace" (WebClient)
HPM-44886	Cannot scroll items in Flex UI table using arrow keys when having a preview template component
HPM-44428	Every flex component updates the flex entity header component
HPM-43932	Web client: Copy & Paste error on Enumeration fields
HPM-43670	Nullpointer when creating a task via the webapplication
HPM-42983	Loading of the Reference Tab takes too long if the item has many (~1000) references
HPM-42525	Issue with Nutrient field where the enumeration is Proposal Enum and has a lookup associated with it.

Media Manager Fixed Limitations

Reference Number	Description
HMM-8158	File upload via Upload applet is not possible for files bigger then 20mb
HMM-8131	Sometimes the LOCK file is not removed
HMM-7898	Modul Status no longer working correct