



Informatica® Metadata Command Center
July 2025

Microsoft Azure Blob Storage Sources

© Copyright Informatica LLC 2024, 2025

This software and documentation are provided only under a separate license agreement containing restrictions on use and disclosure. No part of this document may be reproduced or transmitted in any form, by any means (electronic, photocopying, recording or otherwise) without prior consent of Informatica LLC.

U.S. GOVERNMENT RIGHTS Programs, software, databases, and related documentation and technical data delivered to U.S. Government customers are "commercial computer software" or "commercial technical data" pursuant to the applicable Federal Acquisition Regulation and agency-specific supplemental regulations. As such, the use, duplication, disclosure, modification, and adaptation is subject to the restrictions and license terms set forth in the applicable Government contract, and, to the extent applicable by the terms of the Government contract, the additional rights set forth in FAR 52.227-19, Commercial Computer Software License.

Informatica, Informatica Cloud, Informatica Intelligent Cloud Services, PowerCenter, PowerExchange, and the Informatica logo are trademarks or registered trademarks of Informatica LLC in the United States and many jurisdictions throughout the world. A current list of Informatica trademarks is available on the web at <https://www.informatica.com/trademarks.html>. Other company and product names may be trade names or trademarks of their respective owners.

Portions of this software and/or documentation are subject to copyright held by third parties. Required third party notices are included with the product.

The information in this documentation is subject to change without notice. If you find any problems in this documentation, report them to us at infa_documentation@informatica.com.

Informatica products are warranted according to the terms and conditions of the agreements under which they are provided. INFORMATICA PROVIDES THE INFORMATION IN THIS DOCUMENT "AS IS" WITHOUT WARRANTY OF ANY KIND, EXPRESS OR IMPLIED, INCLUDING WITHOUT ANY WARRANTIES OF MERCHANTABILITY, FITNESS FOR A PARTICULAR PURPOSE AND ANY WARRANTY OR CONDITION OF NON-INFRINGEMENT.

Publication Date: 2025-11-20

Table of Contents

Preface	4
Chapter 1: Introduction to Microsoft Azure Blob Storage catalog sources.....	5
Extraction and view process.	6
About the Microsoft Azure Blob Storage catalog source.	6
Extracted metadata.	7
Compatible connectors.	8
Chapter 2: Before you begin.....	9
Verify permissions.	9
Permissions for metadata extraction.	9
Permissions to run data classification.	9
Permissions to run glossary association.	9
Create a connection.	10
Chapter 3: Create catalog sources in Metadata Command Center.....	12
Step 1. Register a catalog source.	12
Step 2. Configure capabilities.	14
Configure metadata extraction.	15
Filter guidelines and examples.	18
Configure data classification.	20
Configure glossary association.	20
Step 3. Associate stakeholders and asset groups.	21
Step 4. Run or schedule the job.	23
Chapter 4: View results in Data Governance and Catalog.....	25
View metadata extraction results.	25
View data lineage.	27
View lineage at the catalog source level.	28
View lineage at the data set level.	28
View lineage at the data element level.	28
View classified data.	29
View glossary associations.	29

Preface

Read *Microsoft Azure Blob Storage Sources* to learn how to register and configure Microsoft Azure Blob Storage sources in Metadata Command Center as catalog sources. After you configure a catalog source, you extract metadata and then view the results in Data Governance and Catalog.

CHAPTER 1

Introduction to Microsoft Azure Blob Storage catalog sources

You can use Metadata Command Center to extract metadata from a source system.

A source system is any system that contains data or metadata. For example, Microsoft Azure Blob Storage is a source system from which you can extract metadata through a Microsoft Azure Blob Storage catalog source with Metadata Command Center. A catalog source is an object that represents and contains metadata from the source system.

Before you extract metadata from a source system, you first create and register a catalog source that represents the source system. Then you configure capabilities for the catalog source. A capability is a task that Metadata Command Center can perform, such as metadata extraction, lineage discovery, data profiling, data classification, or glossary association.

When Metadata Command Center extracts metadata, Data Governance and Catalog displays the extracted metadata and its attributes as technical assets. You can then perform tasks such as analyzing the assets, viewing relationships, and creating links between those assets and their business context.

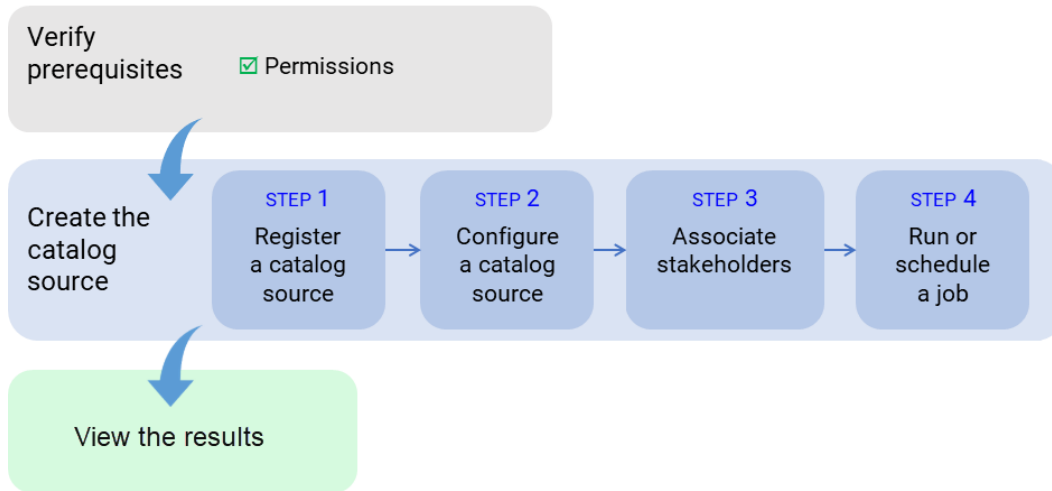
The following table describes the capabilities of the catalog source:

Capability	Description
Incremental metadata extraction	An incremental metadata extraction extracts only the changed and new objects since the last catalog source job run. Incremental metadata extraction doesn't remove deleted objects from the catalog and doesn't extract metadata of code-based objects if applicable.
Serverless Runtime Environment	A serverless runtime environment is an advanced serverless deployment solution that doesn't require downloading, installing, configuring, or maintaining a Secure Agent or Secure Agent group. You can use a serverless runtime environment in the same way that you use a Secure Agent when you configure a catalog source.
Data Classification	Data classification is the process of identifying and organizing data into relevant categories based on the functional meaning of the data. Classifying data can help your organization manage risks, compliance, and data security.
Glossary Association	You can associate terms that are in the glossary with technical assets to provide user-friendly business names to technical assets. Glossary Association automatically associates glossary terms with technical assets or recommends glossary terms that you can manually associate with technical assets in Data Governance and Catalog.

Extraction and view process

To extract metadata from a source system, configure the catalog source and run the extraction job in Metadata Command Center. Then view the results in Data Governance and Catalog.

The following image shows the process to extract metadata from a Microsoft Azure Blob Storage source system:



After you verify prerequisites, perform the following tasks to extract metadata from Microsoft Azure Blob Storage:

1. Register a catalog source. Create a catalog source object, select Microsoft Azure Blob Storage, and then select and test the connection.
2. Configure the catalog source. Specify the runtime environment and configure parameters for metadata extraction. Optionally, add filters to include or exclude source system assets from metadata extraction. You can also configure other capabilities such as data profiling and quality, data classification, or glossary association.
3. Optionally, associate stakeholders. Associate users with technical assets, giving the users permission to perform actions determined by their roles.
4. Run or schedule the catalog source job.

After you run the catalog source job, you view the results in Data Governance and Catalog.

About the Microsoft Azure Blob Storage catalog source

You can use the Microsoft Azure Blob Storage catalog source to extract metadata from a Microsoft Azure Blob Storage source system.

Microsoft Azure Blob Storage is a cloud-based object storage for storing unstructured data on Microsoft's data storage platform.

Extracted metadata

You can use the Microsoft Azure Blob Storage catalog source to extract metadata from a Microsoft Azure Blob Storage source system.

Objects extracted

Metadata Command Center extracts the following metadata from a Microsoft Azure Blob Storage source system:

- Storage Account
- Container
- Folder
- File
- Hierarchical File (AVRO, JSON, Parquet, XML, XSD)
- Flat File (CSV and Delimited files)
- Hierarchical Field (AVRO, JSON, Parquet, XML, XSD)
- Flat Field (CSV and Delimited files)
- Iceberg Table
- Iceberg Field

You can extract workbooks, worksheets, and columns from Microsoft Excel files.

File types

You can extract metadata from the following file types:

- AVRO
- CSV
- JSON
- Parquet
- TSV
- TXT
- XML (XML and XSD files)
- Delimited files
- Flat Partition Detection files
- Multilevel Partition Detection files

The following table lists the structures associated with the file types that you can extract metadata from:

File Type	Partition structure
AVRO	Single partition, multiple partitions, schema merge
CSV	Single partition, multiple partitions, schema merge
JSON	Single partition, multiple partitions, schema merge

File Type	Partition structure
Parquet	Single partition, multiple partitions, schema merge
XML	Single partition, multiple partitions, schema merge

You can extract metadata from XML and XSD file formats as XML file objects. Metadata Command Center extracts only elements and attributes from XML and XSD files. If the size of the XML file exceeds 100 KB, Metadata Command Center extracts metadata from the initial 100 KB of the file. However, for XSD file types, Metadata Command Center extracts complete metadata.

You can extract metadata from the following Microsoft Excel file types:

- Excel 97-2003 Workbook with XLS extension
- Excel Workbook with XLSX extension
- Excel Macro-Enabled Workbook with XLSM extension

Compatible connectors

Before you configure a Microsoft Azure Blob Storage catalog source, you must connect to the Microsoft Azure Blob Storage source system.

Use the Azure Blob Storage V3 connector to connect to the Microsoft Azure Blob Storage source system.

For information about configuring a connection, see *Connections* in the Administrator service.

CHAPTER 2

Before you begin

Before you create a catalog source, ensure that you have the information required to connect to the source system.

Perform the following tasks:

- Verify permissions.
- Configure authentication.
- Create a connection.

Verify permissions

To extract metadata and to configure other capabilities that a catalog source might include, you need account access and permissions on the source system. The permissions required might vary depending on the capability.

Permissions for metadata extraction

To extract Microsoft Azure Blob Storage metadata, you need account access and permissions to the Microsoft Azure Blob Storage source system.

Verify that the administrator configures read permission for the user account that you use to access the source system.

Permissions to run data classification

You can perform data classification with the permissions required to perform metadata extraction.

Permissions to run glossary association

You can perform glossary association with the permissions required to perform metadata extraction.

Create a connection

Create a Microsoft Azure Blob Storage connection object in Administrator with the connection details of the Microsoft Azure Blob Storage source system.

1. In Administrator, select **Connections**.
2. Click **New Connection**.
3. In the **Connection Details** section, enter the following connection details:

Connection property	Description
Connection Name	Name of the connection. Each connection name must be unique within the organization. Connection names can contain alphanumeric characters, spaces, and the following special characters: _ . + -, Maximum length is 255 characters.
Description	Description of the connection. Maximum length is 4000 characters.

4. Select the Microsoft Azure Blob Storage V3 connection type.
5. Enter the following connection details:

Property	Description
Use Secret Vault	Stores sensitive credentials for this connection in the secrets manager that is configured for your organization. This property appears only if secrets manager is set up for your organization. When you enable the secret vault in the connection, you can select which credentials that the Secure Agent retrieves from the secrets manager. If you don't enable this option, the credentials are stored in the repository or on a local Secure Agent, depending on how your organization is configured. Note: If you're using this connection to apply data access policies through pushdown or proxy services, you cannot use the Secret Vault configuration option. For information about how to configure and use a secrets manager, see "Secrets manager configuration" in the Administrator help.
Runtime Environment	The name of the runtime environment where you want to run tasks. For more information about how to configure and use the runtime environments, see <i>Runtime Environments</i> in the Administrator help.
Account Name	Microsoft Azure Blob Storage account name.

6. Select the authentication type.
7. Enter the following connection details:

Shared Key Authentication

Property	Description
Account Key	The account key for the Microsoft Azure Blob Storage account.
Container Name	The name of the blob container in the Microsoft Azure Blob Storage account.
Endpoint Suffix	Types of Microsoft Azure endpoints. Select one of the following options: <ul style="list-style-type: none">- core.windows.net. Connects to Azure endpoints.- core.usgovcloudapi.net. Connects to Azure Government endpoints.- core.chinacloudapi.cn. Default is core.windows.net.

8. Click **Test Connection**.
9. Click **Save**.

CHAPTER 3

Create catalog sources in Metadata Command Center

Use Metadata Command Center to configure a catalog source for Microsoft Azure Blob Storage and run the catalog source job.

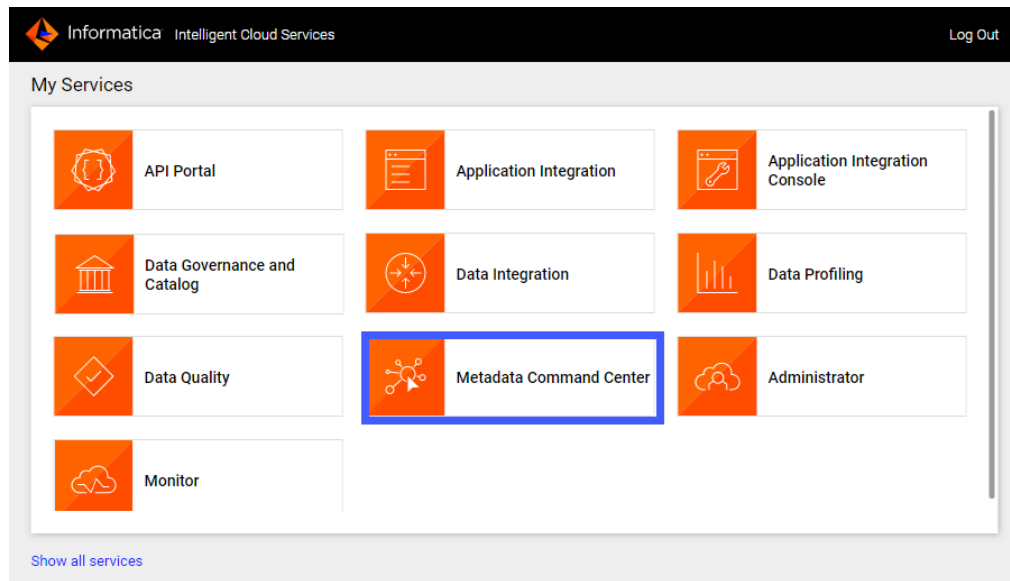
When you configure a catalog source, you define the source system that you want to extract metadata from. Configure filters to include or exclude source system metadata before you run the job. Optionally, configure other capabilities, such as lineage discovery, data profiling and quality, data classification, relationship discovery, and glossary association. To provide stakeholders access to technical assets, you can assign access through stakeholder roles. You can also associate technical assets extracted from the catalog source to asset groups.

Step 1. Register a catalog source

When you register a catalog source, provide general information and connection values.

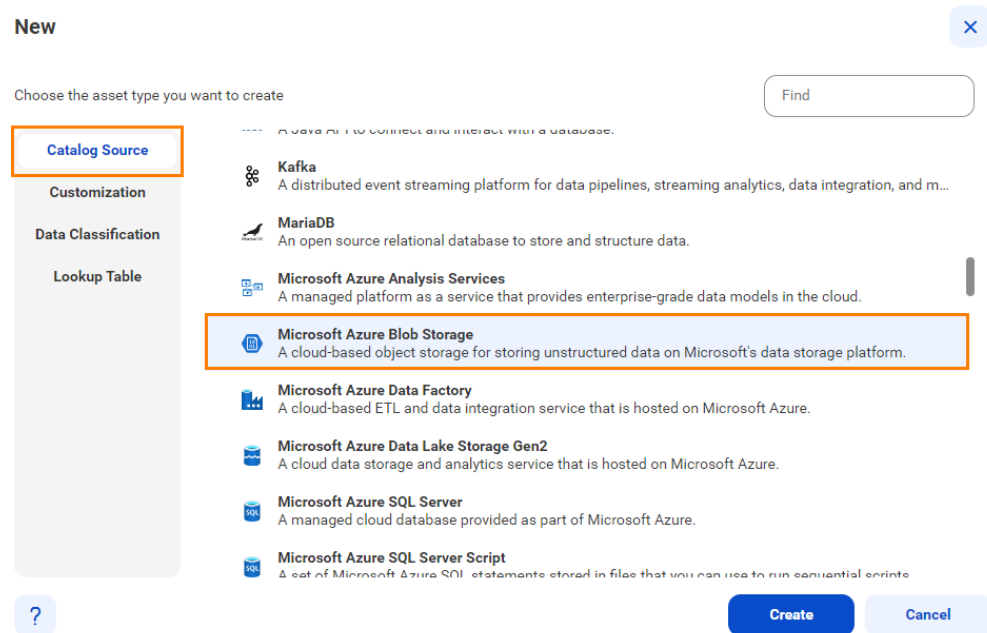
1. Log in to Informatica Intelligent Cloud Services.
The **My Services** page appears.
2. Click **Metadata Command Center**.

The following image shows the Metadata Command Center box on the **My Services** page:



The Metadata Command Center home page appears.

3. Click **New**.
4. Select **Catalog Source** from the list of asset types.
5. Select Microsoft Azure Blob Storage from the list of catalog source types.



6. Click **Create**.
- The **New Catalog Source** page opens.

The following image shows the **Registration** tab on the **New Catalog Source** page:

New Catalog Source

< Back Next > Save Run X

1 Registration 2 Configuration 3 Associations 4 Schedule

General Information

Name: * Enter the Catalog Source Name

Description:

Connection Information

Catalog Source Type: Microsoft Azure Blob Storage

Connection: *

7. In the **General Information** section, enter a name and an optional description for the catalog source.

Note: You can rename a catalog source after you create it, but to apply the change to all associated objects you must rerun the metadata extraction job.

After you save the catalog source, you can update the description in Metadata Command Center and Data Governance and Catalog. The update appears only in the service in which you update it.

8. In the **Connection Information** area, select the connection that you created in Administrator.

Note: To create or edit a catalog source, you need permissions on the connection to the source system. Select a connection that you have access to, or ask the administrator to grant the necessary permissions to the connection that you want to use.

9. Click **Connection Properties** to expand and view the connection properties for the selected connection.
10. Click **Next**.

The **Configuration** page appears.

Step 2. Configure capabilities

When you configure the Microsoft Azure Blob Storage catalog source, you define the settings for the metadata extraction capability and other optional capabilities.

The metadata extraction capability extracts source metadata from external source systems. You can also configure other capabilities that the catalog source includes.

You can save the catalog source configuration at any point after you enter the connection information. After you save the catalog source, you can choose to run the catalog source job. To run the job once, click **Run**. To run metadata extraction and other capabilities on a recurring schedule, configure schedules on the **Schedule** tab.

Configure metadata extraction

When you configure the Microsoft Azure Blob Storage catalog source, you choose a runtime environment, define filters, and enter configuration parameters for metadata extraction.

1. In the **Connection and Runtime** area, choose a serverless runtime environment or the Secure Agent group where you want to run catalog source jobs.

Note: Serverless runtime environment options are available if the catalog source works with a serverless runtime environment.

2. Choose to retain, delete, or deprecate objects that are deleted from the source system in the catalog with the **Metadata Change Option**.
 - **Retain.** Retains objects that are deleted from the source system in the catalog. If you update or add a filter, the catalog retains objects extracted from the previous job and extracts additional objects that match the current filter. Objects deleted from the source system are not deleted from the catalog. Enrichments added on deleted objects and relationships are retained.
 - **Delete.** Deletes metadata from the catalog based on objects deleted from the source system and changes you make to the filter. Enrichments added on deleted objects and relationships are also permanently lost. Objects renamed in the source system are removed and recreated in the catalog.
 - **Deprecate.** The lifecycle of objects imported into the catalog moves to Obsolete based on objects deleted from the source system and changes you make to the filter. This does not impact enrichments added on deprecated objects and relationships. Objects renamed in the source system are removed and recreated in the catalog. When you run the catalog source job again for other capabilities such as data classification, relationship discovery, or glossary association, the job doesn't consider obsolete objects. Obsolete objects remain in the catalog until they are purged when you run a **Purge Obsolete Objects** job on the **Explore** page.

Note: You can also change the configured metadata change option when you run a catalog source.

3. In the **Filters** area, define one or more filter conditions to apply for metadata extraction:
 - a. Select **Yes** to view filter options.
 - b. From the Include/Exclude list, choose to include or exclude metadata based on the filter parameters.
 - c. From the Object type list, select an object type, depending on the object that you want to extract metadata from.
 - d. Enter the path to the object as the filter value.

The following image shows the filter condition options:

Filters

Specify metadata filters: ☐ No ☒ Yes

[Show supported wildcards and examples](#)

Include or exclude metadata: Select the object type: Enter a value to specify the object location:

File
Folder
Path

- e. To define an additional filter with an OR condition, click the **Add** icon.
4. In the **Configuration Parameters** area, enter the configuration parameters.

The following table describes the properties that you can enter in the **Catalog Source Configuration Options** section:

Parameter	Description
Extract Group Elements from Hierarchical Files	<p>Select one of the following options to extract group or leaf elements from hierarchical files:</p> <ul style="list-style-type: none"> - Yes. Extracts group elements from hierarchical files with the complete hierarchy of hierarchical fields. You can view the hierarchy of hierarchical files in the Hierarchy tab of assets in Data Governance and Catalog. - No. Extracts only leaf elements from hierarchical files without the complete hierarchy of hierarchical fields. <p>You can extract group elements from hierarchical files for the following file types:</p> <ul style="list-style-type: none"> - AVRO. Extracts and groups hierarchical files and hierarchical fields. - Parquet. Extracts and groups hierarchical files and hierarchical fields. - JSON. Extracts and groups hierarchical files and hierarchical fields. - XML. Extracts and groups elements and attributes. For XML file types, a maximum depth of 1000 elements is permitted within a single element in the hierarchy. - XSD. Extracts and groups elements and attributes. <p>Attention: If you modify the Extract Group Elements from Hierarchical Files field and run the catalog source again, the asset page doesn't display the hierarchical elements in the correct hierarchy groups. If you modify the property value, purge the catalog source before you run it again.</p>
Enable Extension-Based File Type Detection	<p>Select one of the following options to detect file types by file extensions or by parsing the file contents:</p> <ul style="list-style-type: none"> - Yes. Detects file types by file extensions. - No. Parses the file contents to detect file types. <p>Note: You can detect file types by file extensions for the following file types:</p> <ul style="list-style-type: none"> - CSV - TSV - TXT - XML
Use First Row as Header of Delimited Files	<p>Select one of the following options to use the first row as the header or detect headers automatically for delimited files:</p> <ul style="list-style-type: none"> - Yes. <ul style="list-style-type: none"> Detects column headers based on the following rules: <ul style="list-style-type: none"> - Duplicate headers get suffixed with '#' followed by a number, for example, ABC#1, ABC#2. The detection is not case-sensitive. - Empty column header values appear as UnknownColumn<position>, for example UnknownColumn2. - The header row in the file is detected even if it has a different number of columns than the data rows. - No. Detects headers automatically for delimited files.
Headers of Delimited Files	<p>Specify values to determine headers of delimited files. Separate multiple values by commas. If any value from the list is found in the first row of the delimited file, then the first row is used as the header.</p> <p>Note: This parameter appears only if you choose No for the Use First Row as Header of Delimited Files parameter.</p>
Treat Files Without Extension As	<p>Select one of the following options to identify files without an extension:</p> <ul style="list-style-type: none"> - Parquet - Avro - JSON

Parameter	Description
Enter File Delimiter	<p>Specify the file delimiter if the file from which you extract metadata uses a delimiter other than the following list of delimiters:</p> <ul style="list-style-type: none"> - Comma(,) - Horizontal tab (\t) - Semicolon (;) - Colon (:) - Pipe symbol () <p>Enclose the delimiter in single quotes. For example, '\$'. Use a comma to separate multiple delimiters.</p> <p>Note: Adding a custom delimiter overrides the default list of delimiters. When you add a custom delimiter, include the list of applicable default delimiters.</p>
Files to be excluded during partition discovery	<p>Specify the regular expression of the files that you want to exclude during partition discovery.</p> <p>Enclose each regular expression in double quotes. For example, <code>".*json","Customer.csv","Parquet.*"</code>. Use a comma to separate multiple regular expressions.</p>

Expand the **Partitioned File Configuration** section.

The following table shows the parameters that you can configure for custom partition detection and partition pruning:

Parameter	Description
Custom Partition Detection Configuration File	<p>The configuration file in JSON format to detect custom partitions in the source system. The configuration file defines the pattern of the non-Hive style custom partitions.</p> <p>Note: The system automatically detects partitions if the date format of the partition key is in any of the following formats:</p> <ul style="list-style-type: none"> - dd-MM-yy - dd-MM-yyyy - dd-MMM-yyyy <p>For example, the system interprets dd-MM-yyyy as the partition format and extracts <code>Customer</code> as a hierarchical file instead of a folder in the following partition pattern:</p> <pre>Customer __01-01-2022 __ __ __ dataFile1.parquet __ __ __ dataFile2.parquet __ __ __ ... __02-02-2022 __...</pre> <p>The system doesn't automatically detect partitions with other patterns, such as MM-dd-yyyy. If the pattern is different, you need to define it in JSON format. For example,</p> <pre>{"CustomPartitionPatterns": ["MM-dd-yyyy"]}</pre> <p>To detect the epoch time format, define it in JSON format as:</p> <pre>{"CustomPartitionPatterns": ["@"]}</pre>
Partitioned Pruning Configuration Options	<p>The configuration file in JSON format for partition pruning that contains additional information to identify partitions and determine the relevant schema in the source system.</p>

Parameter	Description
Enable Partition Detection	Specify if you want to enable partition detection.
Enable Partition Pruning	Applicable if you enable partition detection. Specify if you want to enable partition pruning. Default is Yes.

5. Optional. In the **Configuration Parameters** area, enter additional settings.

The following table describes the property that you enter for additional settings:

Note: The **Additional Settings** section appears when you click **Show Advanced**.

Property	Description
Expert Parameters	Enter additional configuration options to be passed at runtime. Required if you need to troubleshoot the catalog source job. Caution: Use expert parameters when it is recommended by Informatica Global Customer Support.

6. Configure additional capabilities for the catalog source by clicking on the tabs.

Filter guidelines and examples

You can add metadata extraction filters when you configure the catalog source. To create a filter, you can use choose from file names, folder names, or paths.

Consider the following rules and guidelines when you enter filter values:

- Filters are case-sensitive.
- Use an asterisk to represent multiple characters in a folder name, file name, and a single folder level in a folder hierarchy. For example, A* matches A, Ab, ABC.
- For file filters, specify only the file name.
- If a file name contains an asterisk, the filter considers it as a wildcard and not a special character. To ignore an asterisk as a wildcard, enclose it in double quotes (") in the filter.
- Use a forward slash as a separator in path hierarchies. You can add a path in folder and path filters.
- Use an asterisk as a path placeholder in folder and path filters. For example, folder1/*/folder3. Here, the filter includes all folders under folder1.
- Use two asterisks to indicate zero or more levels of folders in folder and path filters. The pattern with two asterisks is recursive. The processing time is longer as the data volume increases.

Important: It is recommended that you either use only a path filter or use a combination of a folder and a file filter.

Examples

You can include or exclude metadata from folders, files, or paths.

Folder filters

Folder filters apply to folders included in the source system.

For example:

- To include or exclude metadata from 'Folder2' located inside 'Folder1', select **Folder** as the object type and enter `Folder1/Folder2` in the value field.
- To include or exclude metadata from 'Folder2' located in any folder under 'Folder1', select **Folder** as the object type and enter `Folder1/*/Folder2` in the value field.
- To include or exclude metadata from 'Folder2' located two levels under 'Folder1', select **Folder** as the object type and enter `Folder1/*/*/Folder2` in the value field.
- To include or exclude metadata from 'Folder2' located at any level under 'Folder1', select **Folder** as the object type and enter `Folder1/**/Folder2` in the value field. This is a recursive search, and therefore the processing time can be longer.

File filters

File filters apply to the files included in folders that you filter. The file filter is recursive. If you don't provide any folder filters, the file filters apply to the entire folder hierarchy.

For example:

- To include or exclude metadata from all files with the name 'File1.csv' located in the source directory, select **File** as the object type and enter `File1.csv` in the value field. Metadata Command Center recursively searches for files that match the filter criteria in all folders in the source directory.
- To include or exclude metadata from all files with names that start with 'File' and end with 'ame.csv', select **File** as the object type and enter `File*ame.csv` in the value field.
- To include or exclude metadata from all files with names that end with 'File.csv', select **File** as the object type and enter `*File.csv` in the value field.
- To include or exclude metadata from all files with the name 'File' and files that start with the name 'File' followed by one or more characters, select **File** as the object type and enter `File*` in the value field.
- To include or exclude metadata from all files with names that contain the word 'File', select **File** as the object type and enter `*File*` in the value field.
- To include or exclude metadata from all files with the name 'Fi*le.csv', select **File** as the object type and enter `Fi"*le.csv` in the value field.

Path filters

Path filters apply to the files and folders in the path that you filter. The path filter is non-recursive. If you provide only the file or folder names, the path filters apply to the first level files or directories.

For example:

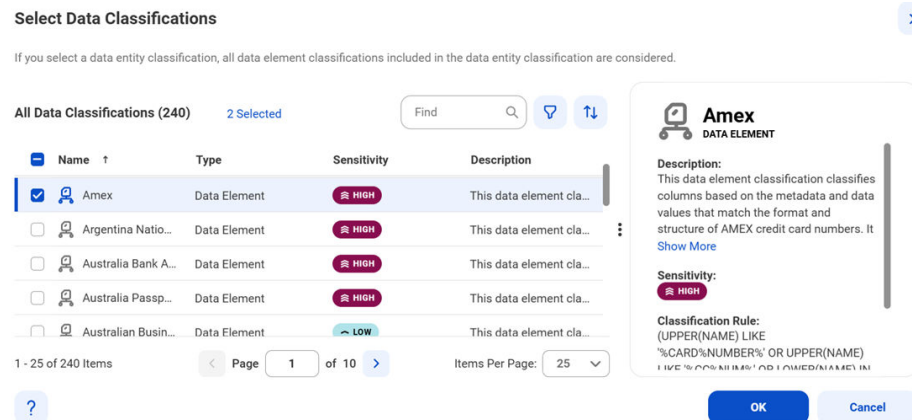
- To include or exclude metadata from files and folders with names that start with 'Item1' in the first level directory, select **Path** as the object type and enter `Item1*` in the value field.
- To include or exclude metadata from the 'File1' file in the 'Folder1' folder, select **Path** as the object type and enter `Folder1/File1` in the value field.
- To include or exclude metadata from files or folders with names that contain the word 'Subfolder' in the 'Folder1' folder, select **Path** as the object type and enter `Folder1/*Subfolder*` in the value field.
- To include or exclude metadata from files or folders with the name 'File1' in any subfolder of the 'Folder1' folder, select **Path** as the object type and enter `Folder1/*/File1` in the value field.
- To include or exclude metadata from all files and subfolders in the 'Folder1' folder, select **Path** as the object type and enter `Folder1/*` in the value field.

- To include or exclude metadata from files or folders with the name 'File1' located at any level in the 'Folder1' folder, select **Path** as the object type and enter `Folder1/**/File1` in the value field. This is a recursive search, and therefore the processing time can be longer.

Configure data classification

Enable the data classification capability to identify and organize data into relevant categories based on the functional meaning of the data.

1. Click the **Data Classification** tab.
 2. Select **Enable Data Classification**.
 3. Choose one or both of the following options:
 - **Generated Data Classifications.** CLAIRE automatically generates data classifications for the data elements.
 - **Data Classification Rules.** Choose from predefined or custom data classifications.
1. Click **Add Data Classification**. The following image shows the **Select Data Classifications** dialog box:



2. Select the data classifications that you want to use.
3. Click **OK**.

Configure glossary association

Enable the glossary association capability to associate glossary terms with technical assets, or to get recommendations for glossary terms that you can manually associate with technical assets in Data Governance and Catalog.

Metadata Command Center considers all published business terms in the glossary while making recommendations to associate your technical assets.

1. Click the **Glossary Association** tab.
2. Select **Enable Glossary Association**.
3. Select **Enable auto-acceptance** to automatically accept glossary association recommendations.
4. Specify the **Confidence Score Threshold for Auto-Acceptance** to set a threshold limit based on which the glossary association capability automatically accepts the recommended glossary terms.

Note: Specify a percentage from 80 to 100. If the score is higher than the specified limit, the glossary association capability automatically assigns a matching glossary term to the data element.

5. Select **Enable Below-threshold Recommendations** to receive glossary association recommendations below the auto-acceptance threshold. If you enable auto-acceptance, you can enable below-threshold recommendations to receive glossary recommendations below the auto-acceptance threshold.
6. Specify the **Confidence Score Threshold for Recommendations** to set a threshold based on which the glossary association capability makes recommendations

If you enable auto-acceptance, specify a percentage from 80 to the selected auto-acceptance threshold. You can accept or reject the recommended glossary terms that fall within this range in Data Governance and Catalog.

If you disable auto-acceptance, specify a percentage from 80 to 100 inclusive.
7. Choose to automatically assign business names and descriptions to technical assets. You can then choose to retain existing assignments and only assign business names and descriptions to assets that don't have assignments, or allow overwrite of existing assignments.

By default, existing assignments are retained.
8. Optional. Choose to ignore specific parts of data elements when making recommendations. Select **Yes** and enter prefix and suffix keyword values as needed.

Click **Select** to enter a keyword. You can enter multiple unique prefix and suffix keywords. Keyword values are case insensitive.
9. Optional. Choose specific top-level business glossary assets to associate with technical assets. Selecting a top-level asset selects its child assets as well. Select **Top-level Glossary Assets** and specify the assets on the **Select Assets** page.
10. Optional. Choose to use abbreviations and synonym definitions from lookup tables for accurate glossary association. Select **Yes** to enable, and then click **Select** to upload a lookup table.
11. Click **Next**.

The **Associations** page appears.

Step 3. Associate stakeholders and asset groups

Associate users or user groups within a stakeholder role as stakeholders for technical assets in Data Governance and Catalog. Also, you can choose to assign technical assets extracted from the catalog source to asset groups. You can then use access policies to control permissions on assets that are assigned to asset groups.

Verify that the administrator assigned users and user groups to the stakeholder role that you want to associate with technical assets.

1. To associate users or user groups as stakeholders with technical assets extracted from the catalog source, perform the following steps:
 - a. On the **Associations** page, click **Stakeholders**.
 - b. Select **Assign Stakeholders**.
 - c. Select a stakeholder role.
 - d. Click **Select** to add users and user groups from the stakeholder role as stakeholders for the technical assets.

The **Add Users & User Groups** dialog box displays a list of users and user groups assigned to the selected stakeholder role.

Add Users & User Groups

Users

User Groups

All Users (1)

Find

<input type="checkbox"/>	Full Name	Email	User Name	Status
<input type="checkbox"/>	gov owner_09			Active

?

OK

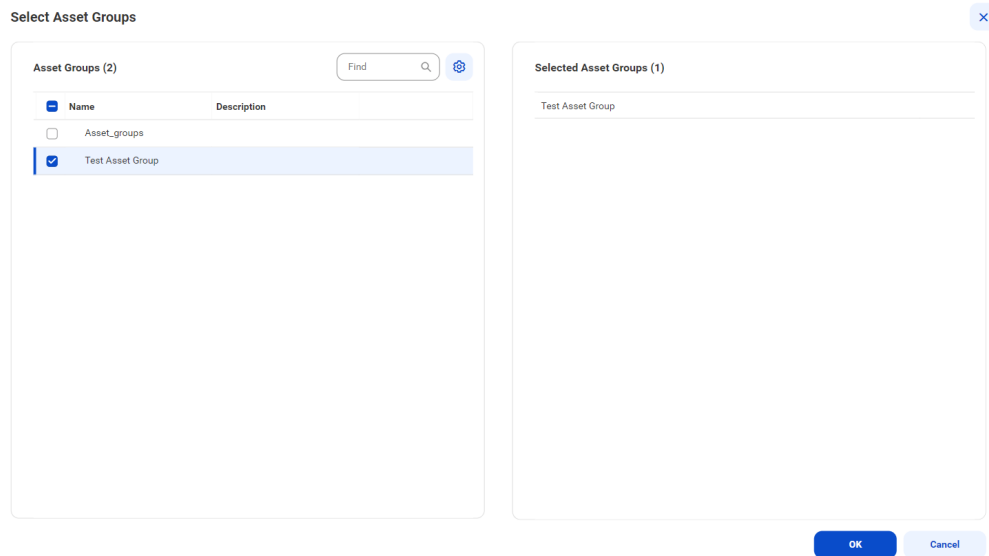
Cancel

- e. Select one or more users or user groups to assign as stakeholders for the technical assets, and click **OK**.
Only the selected users and user groups belonging to the specified stakeholder role are granted the permissions to technical assets.
- f. To assign users or user groups from another stakeholder role, click **Add** and then repeat the steps.
- 2. To assign asset groups to technical assets extracted from the catalog source, perform the following steps:
 - a. On the **Associations** page, click **Asset Groups**.
 - b. Select **Assign Asset Groups**.
 - c. Click **Select**.

The **Select Asset Groups** dialog box displays the list of asset groups.

If you enabled an access policy that includes an asset group, you can only view assets that belong to that asset group.

- 3. Select the asset groups to which you want to assign technical assets extracted from the catalog source, and click **OK**.



4. Choose to save and run the job or to schedule a recurring job.
 - To save and run the job, click **Save** and then **Run**.
 - To schedule a recurring job, click **Next** to open the **Schedule** page.

Step 4. Run or schedule the job

Choose to run a catalog source job manually, or configure it to run on schedule.

Note: You can't run multiple jobs simultaneously.

You can choose to perform a full or an incremental metadata extraction. A full metadata extraction extracts all objects from the source to the catalog. An incremental metadata extraction extracts only the changed and new objects since the last successful catalog source job run. Incremental metadata extraction doesn't remove deleted objects from the catalog and doesn't extract metadata of code-based objects if applicable.

When you run an incremental metadata extraction job with a filter to include metadata from objects, the job extracts only the objects that have the latest timestamp since the last successful job.

Note: The incremental extraction option appears if it is available for the catalog source.

Run the job manually

Click **Save** to save the catalog source and click **Run**. On the **Run Catalog Source Job** window, click **Run** to run the job.

You can override the capabilities that you selected while configuring your catalog source on the **Configuration** page. The first time you run the catalog source job, the metadata extraction capability is mandatory. From the second run onwards, you can choose to override the configured metadata change option. You can retain, delete, or deprecate objects that are deleted from the source in the catalog. For subsequent runs of the catalog source job, the metadata extraction capability is optional.

Note: You can choose incremental metadata extraction for subsequent runs only after one full metadata extraction job completes successfully. Incremental metadata extraction jobs run with the **Retain** metadata change option even if you set the option to **Delete** or **Deprecate** in the catalog source.

Note: To run a catalog source job, you need permissions on the connection to the source system. To run a catalog source job for catalog sources that reference other source systems, you need permissions on the connections for all the reference source systems.

Run the job on a schedule

You can choose to run metadata extraction and other capabilities on a recurring schedule. You can't choose incremental metadata extraction and full metadata extraction in the same schedule. To create a schedule for incremental metadata extraction, you must have completed at least one full metadata extraction job successfully. If not, first create a schedule for a full metadata extraction.

If an incremental metadata extraction is scheduled to run when the last run details aren't available, the job first performs a full metadata extraction, followed by incremental metadata extraction on subsequent runs.

For example, this can happen in the following scenarios:

- You create schedules for both incremental metadata extraction and full metadata extraction, but schedule the incremental extraction to run before the first full metadata extraction job.
- You create schedules for both incremental metadata extraction and full metadata extraction, but delete the full metadata extraction schedule before its first run.

1. On the **Schedule** tab, select **Run on Schedule**.
The **Schedule** configuration page opens.
2. Click the checkbox corresponding to each capability that you want to include in the schedule.
3. Enter the start date, time zone, and the interval at which you want to run the job.
4. You can manage additional schedules using the following options:
 - To create a new schedule, click the **Add** button.
 - To delete a schedule, click the **Delete** button.
 - To enable or disable a schedule, click the **Enable Schedule** toggle button.

Note: You can create a maximum of one schedule per capability that you enable. If you purged a catalog source or did not run the metadata extraction job, the catalog source job runs metadata extraction before running other scheduled capabilities.

Note: To create a schedule, you need permissions on the connection to the source system. If you lose permissions on the connection after you create a schedule, the scheduled jobs continue to run.

5. Click **Save** to save the schedule.

Monitor job status

After the job runs, you can monitor the status of the job on the **Overview** page of the job.

For more information about job monitoring, see *Administration*.

CHAPTER 4

View results in Data Governance and Catalog

After Metadata Command Center runs a job, you can view the results in Data Governance and Catalog where the catalog source and its elements are called technical assets. You can view a catalog source as a hierarchy. Expand each technical asset to see its components.

When referenced source systems are connected to a catalog source, you can expand the hierarchy to see details about the technical asset's component elements.

You can view the data lineage of an asset contained within a catalog source to see individual elements such as data sources, calculations, and filters. When you view data lineage, you can see the individual upstream elements that contribute data or expressions to each component of a data flow or catalog source.

View metadata extraction results

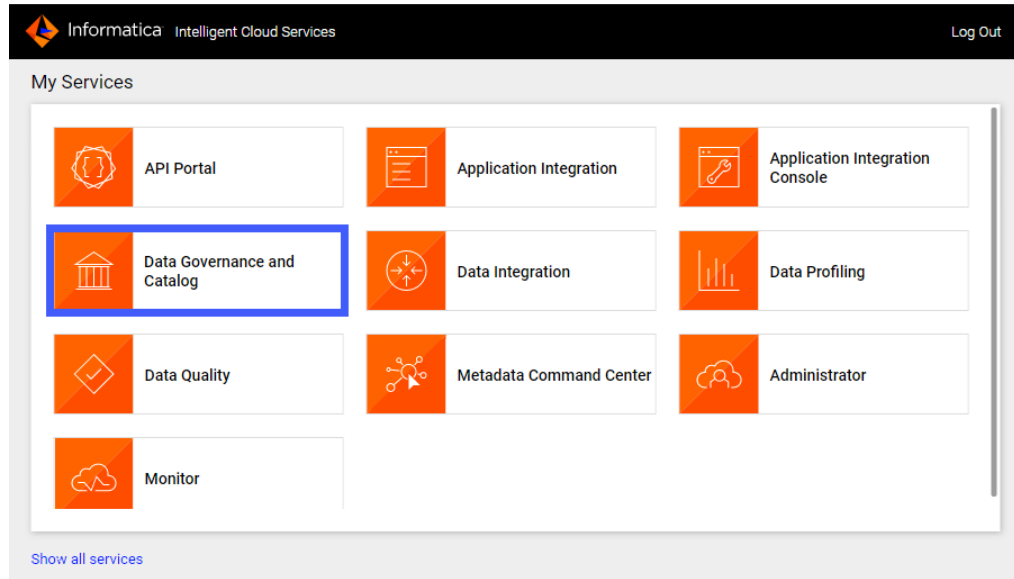
After a job runs in Metadata Command Center, view the results in Data Governance and Catalog. You can view details about source system contents in a hierarchical structure and trace data lineage.

1. Log in to Informatica Intelligent Cloud Services.

The **My Services** page appears.

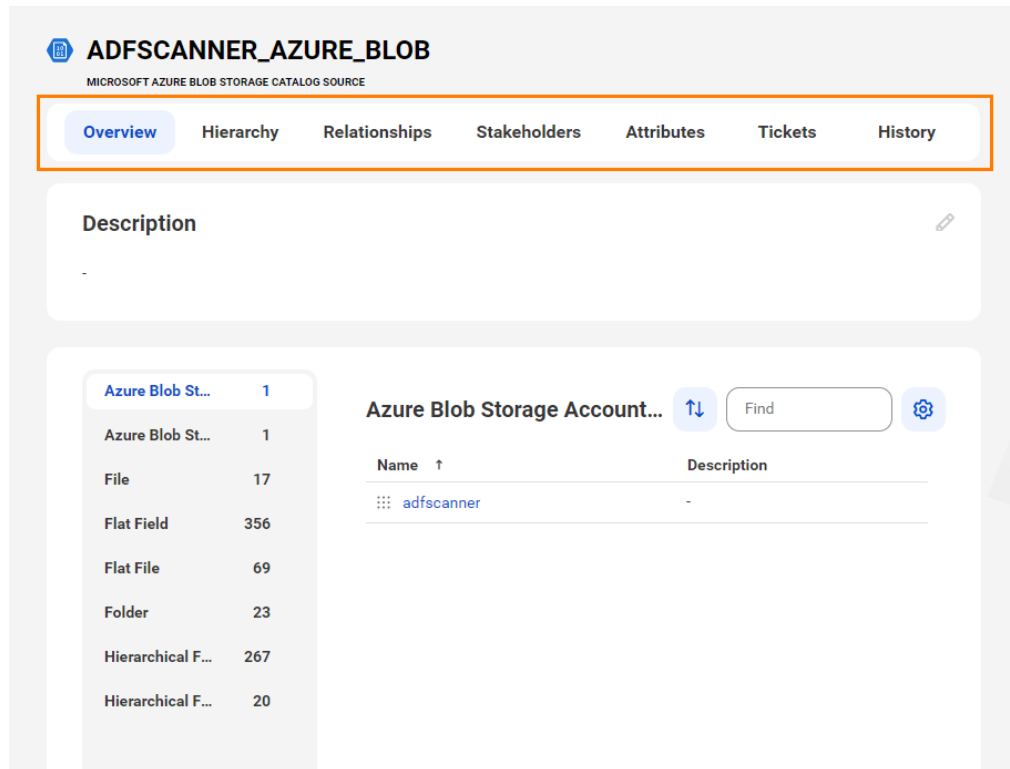
2. Click Data Governance and Catalog.

The following image shows the Data Governance and Catalog box on the **My Services** page:



3. On the Data Governance and Catalog home page, click the number in the **Technical Assets** panel. The **Technical Assets** page opens.
4. Select **Catalog Source** in the **Filter** list. The list of catalog sources opens.
5. Search for the catalog source from which you extracted metadata, and click the name. The **Overview** tab of the asset opens.

The following image shows a sample asset page:



- View the asset from different perspectives by clicking on the tabs.

Note: If an incremental metadata extraction job includes a view, it extracts the corresponding tables even if the tables were extracted in previous runs.

For more information about working with assets, see Working with Assets in *Data Governance and Catalog* help.

View data lineage

Data lineage is a visual representation of the flow of data across the systems in your organization. Lineage depicts how the data flows from the system of its origin to the system of its destination.

Data lineage views are available for technical assets in the catalog source. You can view lineage at the catalog source, data set, or data element level.

The lineage at the catalog source level shows how data flows from one catalog source to another. The lineage at the data set and the data element levels show how other technical assets such as files or tables contribute to the selected asset.

Note: File system assets can be source and target endpoint objects for other catalog sources, for example Business Intelligence or ETL sources. File system sources don't create any references to external assets. If you didn't assign them to any reference assets created by other catalog sources, the **Lineage** tab doesn't display the data flow.

If linking catalog sources is available for your catalog source, you can use Metadata Command Center to generate data lineage based on rules or by generating automated lineage with CLAIRE. You can choose source and target catalog sources and objects to link and generate lineage.

To determine whether linking catalog sources is available for your catalog source, navigate to the **Configuration** tab of the **Link Catalog Sources** page. The catalog source must appear in the list of source and target catalog sources.

For information about linking catalog sources, see *Link catalog sources* in the Administration help.

View lineage at the catalog source level

The catalog source level shows how data flows from one catalog source to another with the lineage aggregating data from the data set and data element levels.

To view data lineage at the catalog source level, open a technical asset, click the **Lineage** tab, and then verify that the level is set to **Catalog Source Level**.

View lineage at the data set level

The data set level displays individual sets of data in the data flow.

To view lineage at the data set level, open a technical asset, click the **Lineage** tab, and then verify that the level is set to **Data Set Level**.

View lineage at the data element level

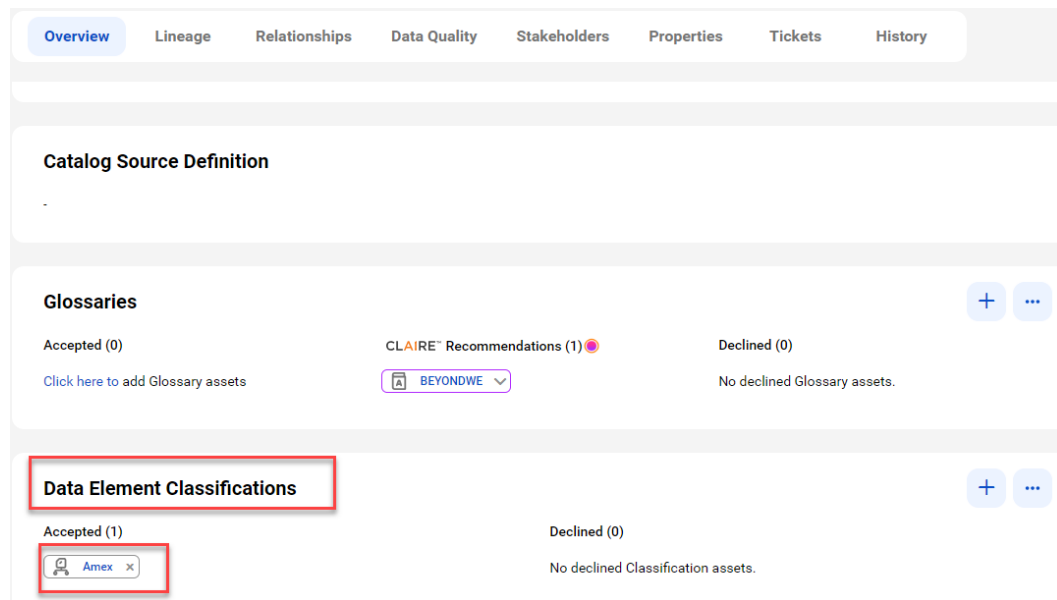
The data element level displays details of the data set level. At the data element level, you can see the input sources for expressions or commands and calculations or transformations on the data.

To view data lineage at the data element level, open a technical asset, click the **Lineage** tab, and then verify that the level is set to **Data Element Level**.

View classified data

When you add data classification rules to a catalog source in Metadata Command Center, the system identifies the columns and tables that match the rules and displays one or more matched data classifications on the column or table asset pages in Data Governance and Catalog.

The following image shows a column asset page with the inferred data element classifications that match the column data and metadata:



For more information about data classification assets, see *Asset Details* in the Data Governance and Catalog help.

View glossary associations

When you enable the glossary association capability for a catalog source in Metadata Command Center, you can view the accepted glossary assets in Data Governance and Catalog.

The **Overview** tab for a technical asset in the catalog source displays glossary assets in the Accepted and CLAIRE Recommendations sections.

The **Glossaries** panel shows the automatically accepted and CLAIRE® recommended terms.

The following image shows a sample asset page:

